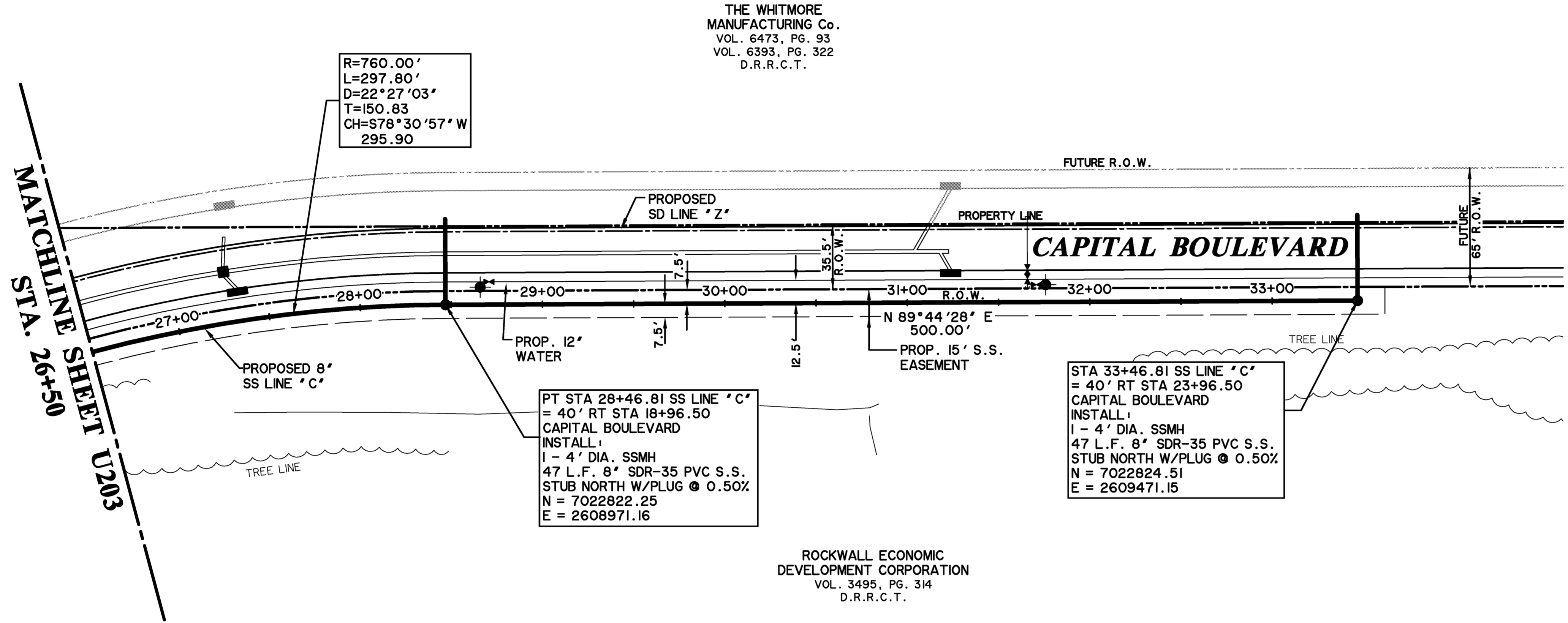
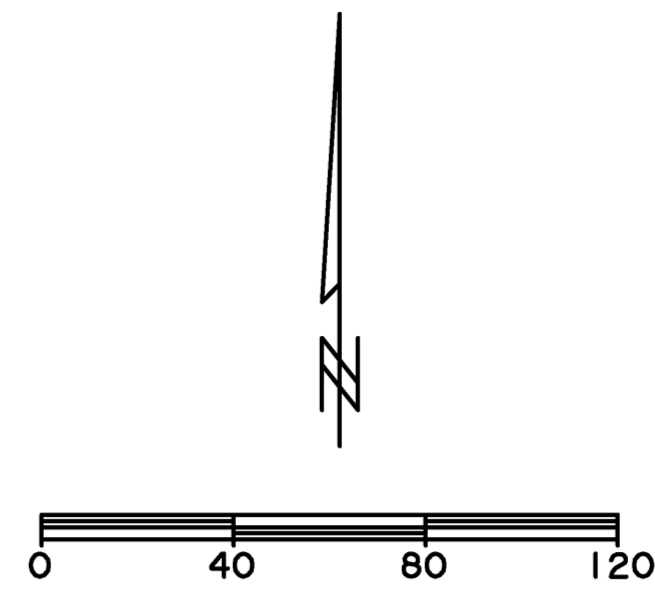


TIME: 14.12 FILE: I:\204-SS PLAN PROFILE LINE C-4-12209.dwg



R=760.00'
L=297.80'
D=22°27'03''
T=150.83
CH=S78°30'57" W
295.90

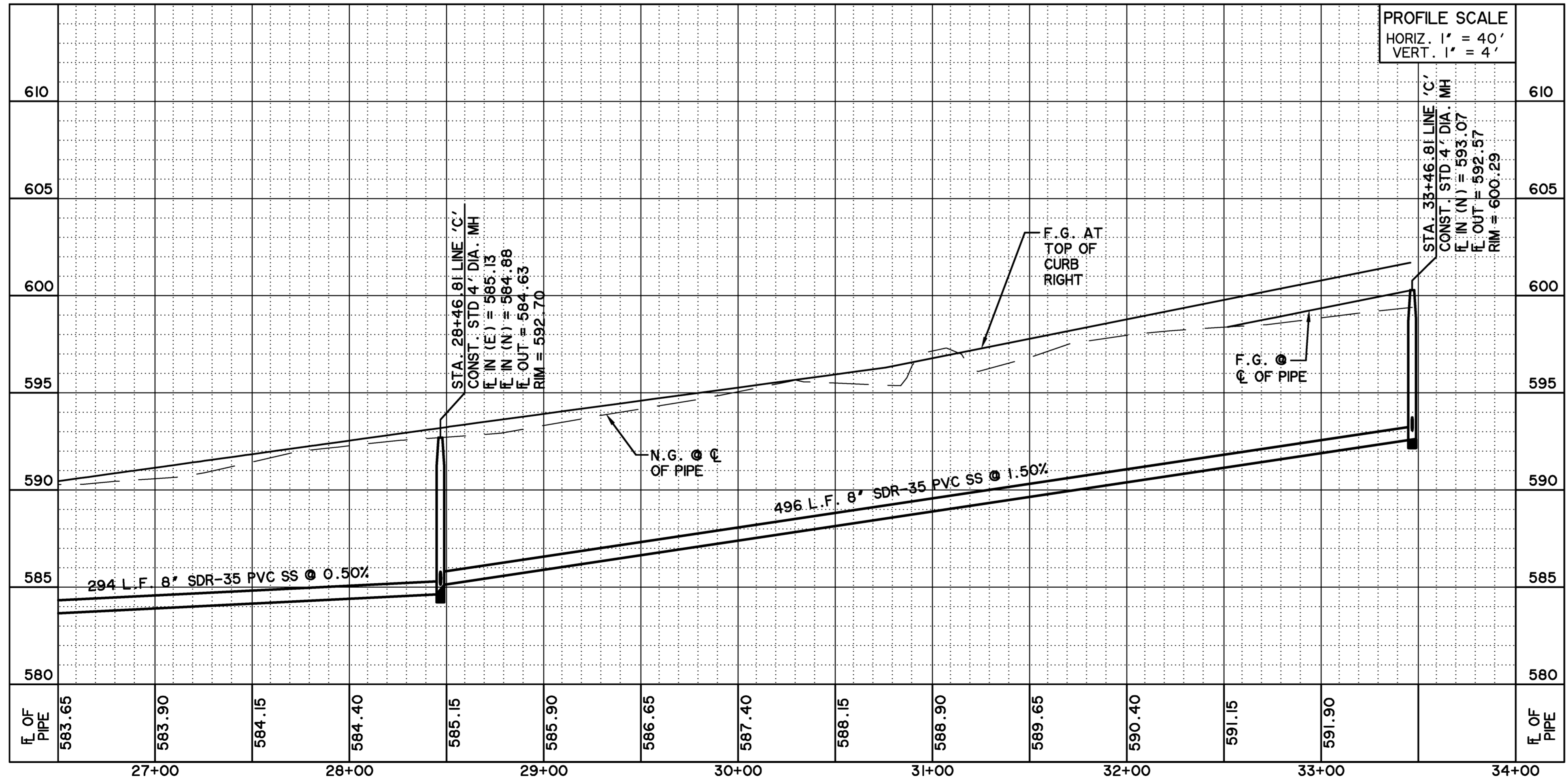
THE WHITMORE
MANUFACTURING Co.
VOL. 6473, PG. 93
VOL. 6393, PG. 322
D.R.R.C.T.



PT STA 28+46.81 SS LINE 'C'
= 40' RT STA 18+96.50
CAPITAL BOULEVARD
INSTALL:
1 - 4' DIA. SSMH
47 L.F. 8" SDR-35 PVC S.S.
STUB NORTH W/PLUG @ 0.50%
N = 7022822.25
E = 2608971.16

STA 33+46.81 SS LINE 'C'
= 40' RT STA 23+96.50
CAPITAL BOULEVARD
INSTALL:
1 - 4' DIA. SSMH
47 L.F. 8" SDR-35 PVC S.S.
STUB NORTH W/PLUG @ 0.50%
N = 7022824.51
E = 2609471.15

ROCKWALL ECONOMIC
DEVELOPMENT CORPORATION
VOL. 3495, PG. 314
D.R.R.C.T.



CAUTION !!
EXISTING UTILITIES ARE INDICATED ON THE PLANS FROM AVAILABLE INFORMATION. IT SHALL BE THE RESPONSIBILITY OF THE CONTRACTOR TO VERIFY THE LOCATION OF ALL UTILITIES, TO NOTIFY ALL UTILITY COMPANIES OF THE CONTRACTORS OPERATIONS, TO PROTECT ALL UTILITIES FROM DAMAGE, TO REPAIR ALL UTILITIES DAMAGED DUE TO THE CONTRACTORS OPERATIONS, AND TO NOTIFY THE ENGINEER PROMPTLY OF ALL CONFLICTS OF THE WORK WITH EXISTING UTILITIES.

*** BENCH MARKS ***

BM A AN "X" CUT IN THE BACK OF CURB LOCATED AT THE SOUTH RIGHT-OF-WAY LINE OF SPRINGER ROAD ±2470' EAST OF THE INTERSECTION OF SPRINGER ROAD AND F.M. 549. 598.80 FT.

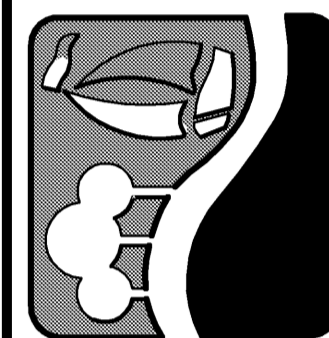
BM B AN "X" CUT IN THE BACK OF CURB LOCATED AT THE NORTH RIGHT-OF-WAY LINE OF DISCOVERY BOULEVARD ±580' EAST OF THE INTERSECTION OF DISCOVERY BOULEVARD AND F.M. 549. 599.82 FT.

BM C - AN "□" CUT IN DISCOVERY BOULEVARD IN A MEDIAN NOSE ±60' WEST OF THE INTERSECTION OF DISCOVERY BOULEVARD AND F.M. 549. 598.20 FT.

**RECORD
DRAWING
02/02/2015**

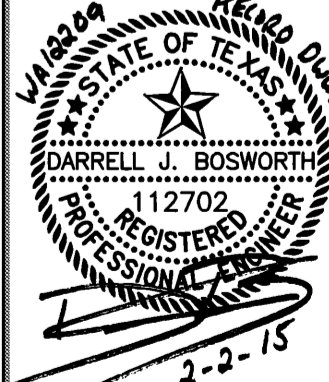
TO THE BEST OF OUR KNOWLEDGE WIER & ASSOCIATES, INC., HERBY STATES THAT THIS PLAN IS AS-BUILT. THIS INFORMATION PROVIDED IS BASED ON SURVEYING AT THE SITE AND INFORMATION PROVIDED BY THE CONTRACTOR.

PREPARED BY:
WIER & ASSOCIATES, INC.
ENGINEERS SURVEYORS LAND PLANNERS
701 HIGHLANDER BLVD., SUITE 300 ARLINGTON, TEXAS 76015 METRO (817)467-7700
www.WierAssociates.com
Texas Firm Registration No. F-2776



**ROCKWALL
TECHNOLOGY
PARK
PHASE IV**

**SANITARY SEWER
LINE 'C'
PLAN AND PROFILE
STA 26+50 TO END**



COPYRIGHT ©
WIER & ASSOCIATES, INC.
LAST SHEET EDIT
DATE: 10-02-2015
WA# 12209
**SHEET NO.
U204**