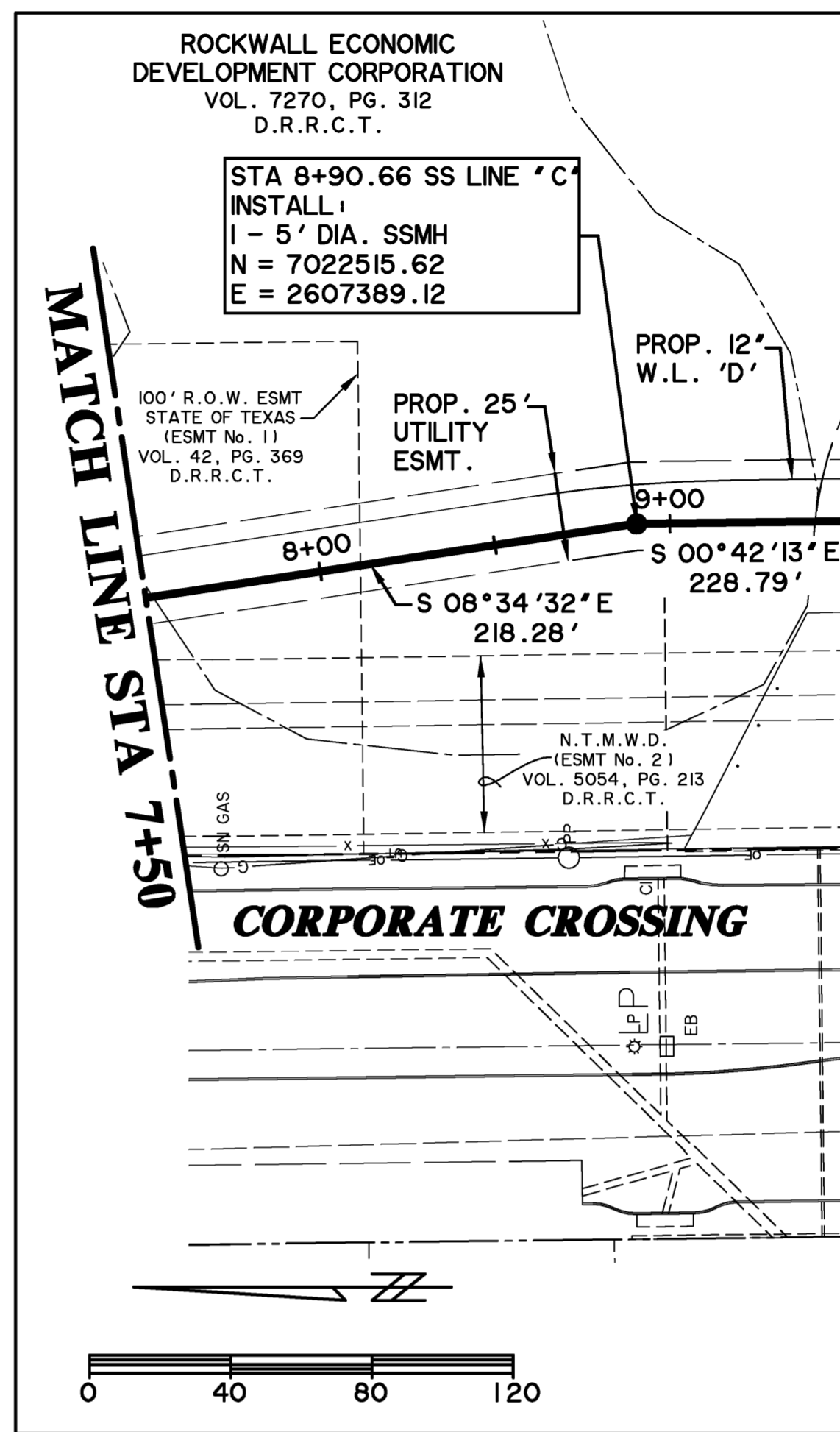
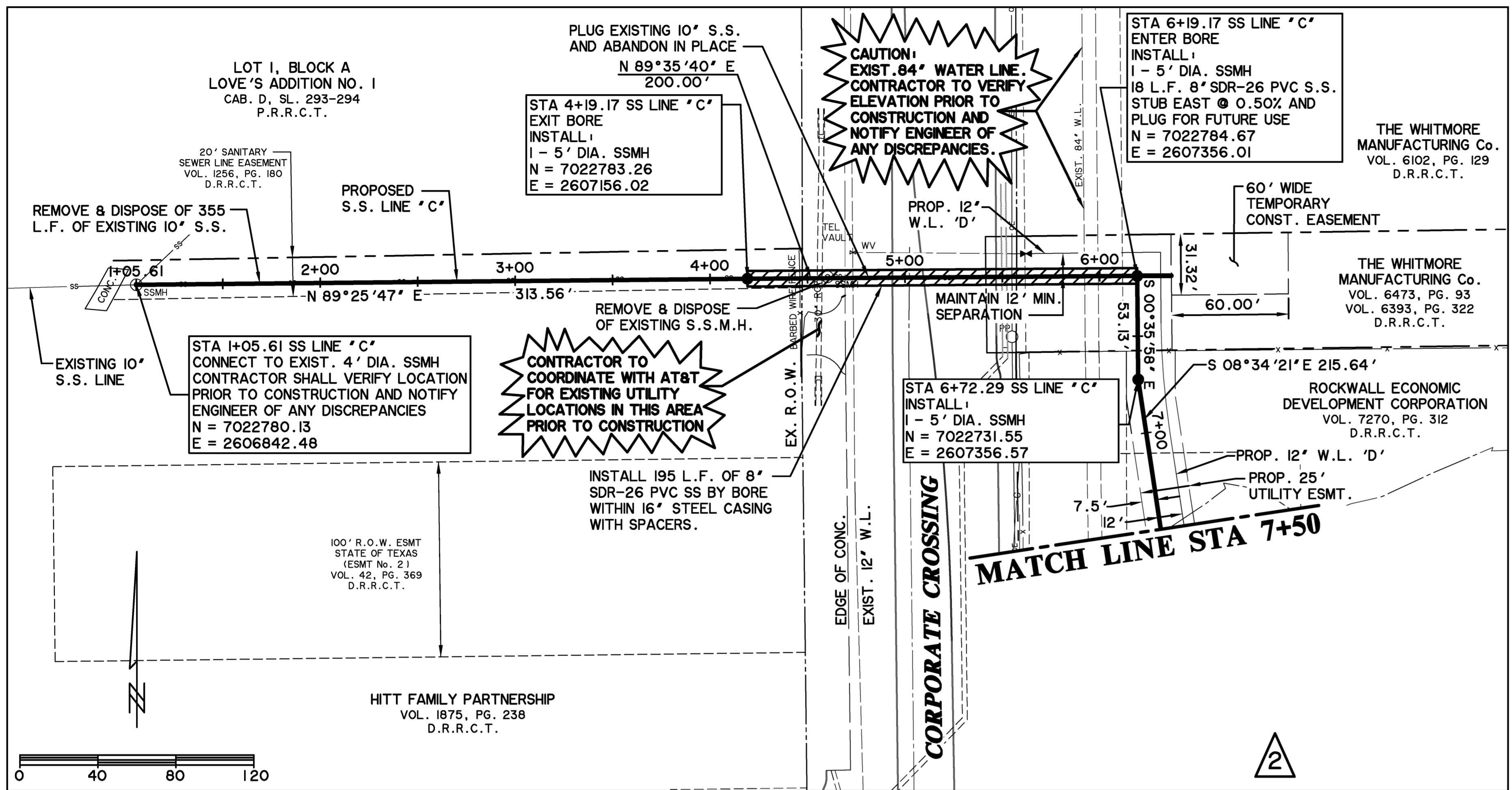
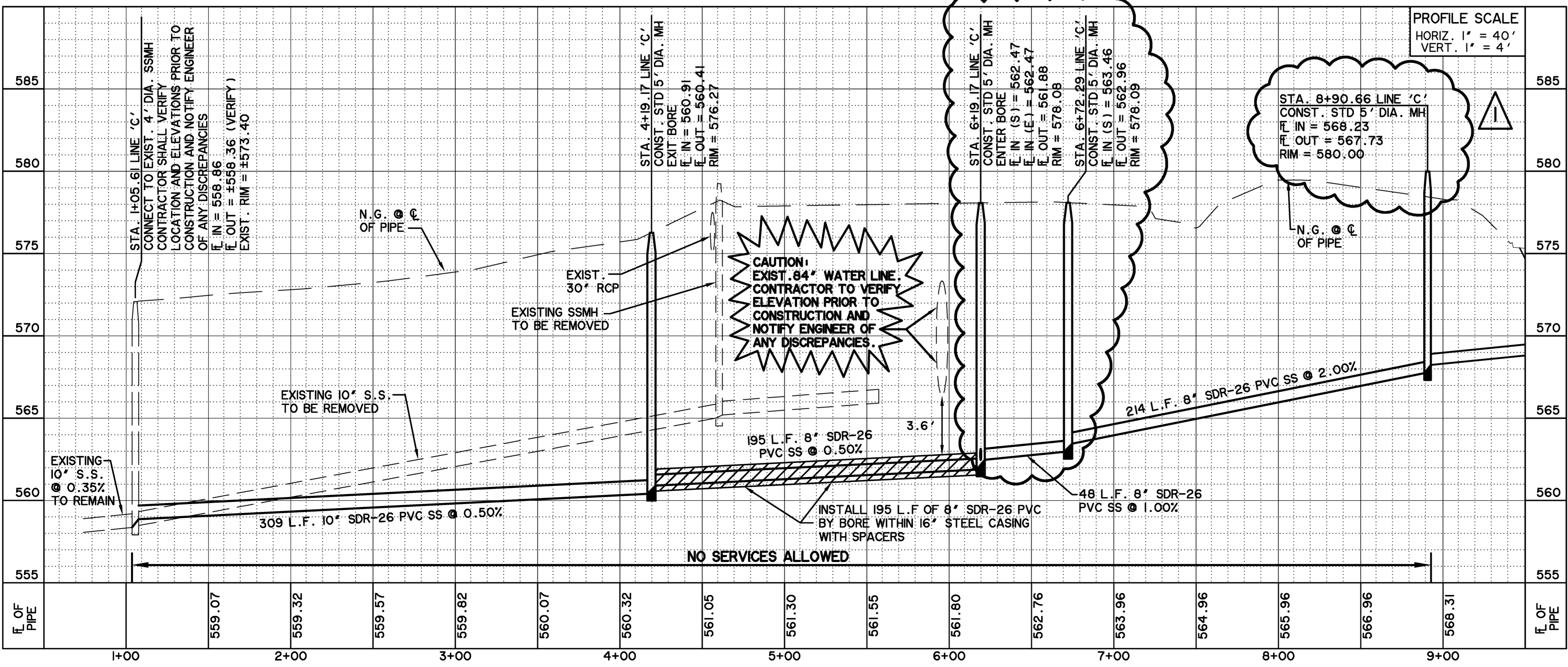


TIME 13:25 FILE: U201-SS PLAN PROFILE LINE C-I-12209_REV1.dwg



REVISIONS

1	4/10/2014: CHANGED S.S.M.H. RIM ELEVATION TO 580.00
2	4/10/2014: REMOVED R FOR 8" STUB TO THE EAST AND ADDED TO S.S.M.H. @ STA 6+19.17



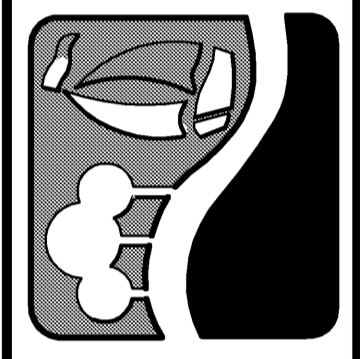
CAUTION !!!
EXISTING UTILITIES ARE INDICATED ON THE PLANS FROM AVAILABLE INFORMATION. IT SHALL BE THE RESPONSIBILITY OF THE CONTRACTOR TO VERIFY THE LOCATION OF ALL UTILITIES, TO NOTIFY ALL UTILITY COMPANIES OF THE CONTRACTORS OPERATIONS, TO PROTECT ALL UTILITIES FROM DAMAGE, TO REPAIR ALL UTILITIES DAMAGED DUE TO THE CONTRACTORS OPERATIONS, AND TO NOTIFY THE ENGINEER PROMPTLY OF ALL CONFLICTS OF THE WORK WITH EXISTING UTILITIES.

BENCH MARKS

BM A	AN 'X' CUT IN THE BACK OF CURB LOCATED AT THE SOUTH RIGHT-OF-WAY LINE OF SPRINGER ROAD ±2470' EAST OF THE INTERSECTION OF SPRINGER ROAD AND F.M. 549.	598.80 FT.
BM B	AN 'X' CUT IN THE BACK OF CURB LOCATED AT THE NORTH RIGHT-OF-WAY LINE OF DISCOVERY BOULEVARD ±580' EAST OF THE INTERSECTION OF DISCOVERY BOULEVARD AND F.M. 549.	599.82 FT.
BM C	AN '□' CUT IN DISCOVERY BOULEVARD IN A MEDIAN NOSE ±60' WEST OF THE INTERSECTION OF DISCOVERY BOULEVARD AND F.M. 549.	598.20 FT.

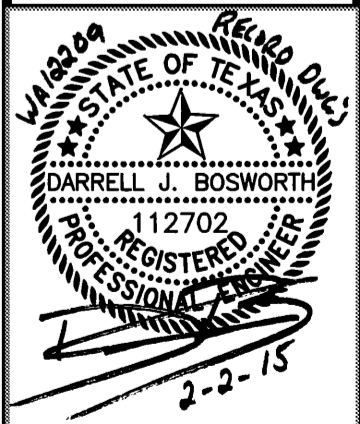
RECORD DRAWING
02/02/2015
TO THE BEST OF OUR KNOWLEDGE WIER & ASSOCIATES, INC., HEREBY STATES THAT THIS PLAN IS AS-BUILT. THIS INFORMATION PROVIDED IS BASED ON SURVEYING AT THE SITE AND INFORMATION PROVIDED BY THE CONTRACTOR.

PREPARED BY:
WIER & ASSOCIATES, INC.
ENGINEERS SURVEYORS LAND PLANNERS
701 HIGHLANDER BLVD., SUITE 300 ARLINGTON, TEXAS 76015 METRO (817)467-7700
www.WierAssociates.com
Texas Firm Registration No. F-2776



ROCKWALL TECHNOLOGY PARK PHASE IV

SANITARY SEWER LINE 'C' PLAN AND PROFILE STA 0+00 TO STA 9+50



COPYRIGHT © WIER & ASSOCIATES, INC. LAST SHEET EDIT DATE: 04-10-2014 WA# 12209
SHEET NO. U201