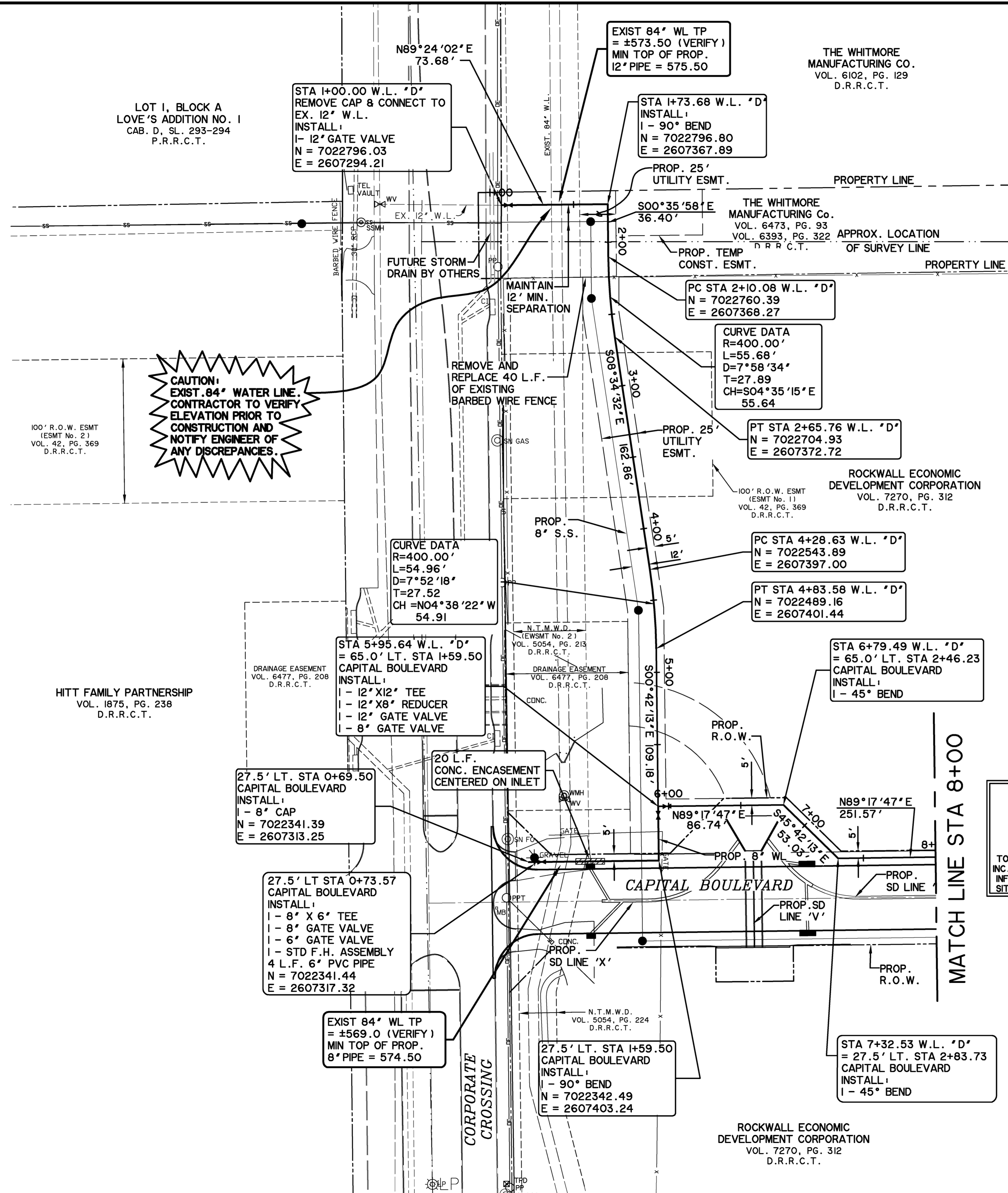


TIME 16:49 FILE: I:\02-WATER LINE D-I-12209.dwg



LOT 1, BLOCK A
LOVE'S ADDITION NO. 1
CAB. D. SL. 293-294
P.R.R.C.T.

THE WHITMORE
MANUFACTURING CO.
VOL. 6102, PG. 129
D.R.R.C.T.

THE WHITMORE
MANUFACTURING Co.
VOL. 6473, PG. 93
VOL. 6393, PG. 322
D.R.R.C.T.

ROCKWALL ECONOMIC
DEVELOPMENT CORPORATION
VOL. 7270, PG. 312
D.R.R.C.T.

HITT FAMILY PARTNERSHIP
VOL. 1875, PG. 238
D.R.R.C.T.

CAUTION!
EXIST. 84" WATER LINE.
CONTRACTOR TO VERIFY
ELEVATION PRIOR TO
CONSTRUCTION AND
NOTIFY ENGINEER OF
ANY DISCREPANCIES.

**RECORD
DRAWING
02/02/2015**

TO THE BEST OF OUR KNOWLEDGE WIER & ASSOCIATES, INC., HERBY STATES THAT THIS PLAN IS AS-BUILT. THIS INFORMATION PROVIDED IS BASED ON SURVEYING AT THE SITE AND INFORMATION PROVIDED BY THE CONTRACTOR.



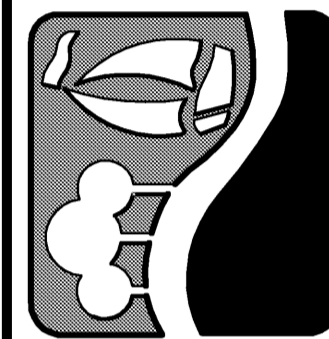
CAUTION !!
EXISTING UTILITIES ARE INDICATED ON THE PLANS FROM AVAILABLE INFORMATION. IT SHALL BE THE RESPONSIBILITY OF THE CONTRACTOR TO VERIFY THE LOCATION OF ALL UTILITIES, TO NOTIFY ALL UTILITY COMPANIES OF THE CONTRACTORS OPERATIONS, TO PROTECT ALL UTILITIES FROM DAMAGE, TO REPAIR ALL UTILITIES DAMAGED DUE TO THE CONTRACTORS OPERATIONS, AND TO NOTIFY THE ENGINEER PROMPTLY OF ALL CONFLICTS OF THE WORK WITH EXISTING UTILITIES.

* ALL RESPONSIBILITY FOR ADEQUACY OF DESIGN REMAINS WITH THE DESIGN ENGINEER. THE CITY OF ROCKWALL, IN REVIEWING AND RELEASING PLANS FOR CONSTRUCTION, ASSUMES NO RESPONSIBILITY FOR ADEQUACY OF DESIGN.*

- NOTES:
1. CONTRACTOR SHALL ADJUST LOCATION OF PROPOSED WATER LINES AS REQUIRED TO AVOID CONFLICTS WITH STORM SEWER OR OTHER UTILITIES.
 2. ALL WATER LINES SHALL HAVE A MINIMUM COVER OF 48" MEASURED FROM TOP OF PIPE UNLESS NOTED OTHERWISE OR A GREATER DEPTH IS REQUIRED BY CITY STANDARDS.
 3. INSTALL FIRE HYDRANTS 8' FROM BACK OF CURB.

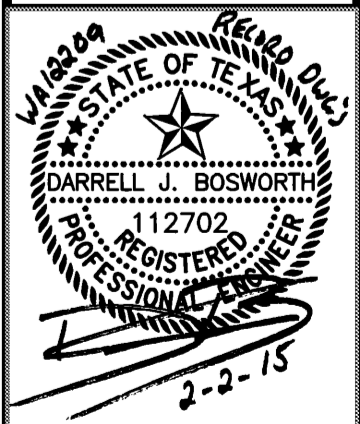
- * BENCH MARKS *
- BM A - AN "X" CUT IN THE BACK OF CURB LOCATED AT THE SOUTH RIGHT-OF-WAY LINE OF SPRINGER ROAD ±2470' EAST OF THE INTERSECTION OF SPRINGER ROAD AND F.M. 549. 598.80 FT.
 - BM B - AN "X" CUT IN THE BACK OF CURB LOCATED AT THE NORTH RIGHT-OF-WAY LINE OF DISCOVERY BOULEVARD ±580' EAST OF THE INTERSECTION OF DISCOVERY BOULEVARD AND F.M. 549. 599.82 FT.
 - BM C - AN "□" CUT IN DISCOVERY BOULEVARD IN A MEDIAN NOSE ±60' WEST OF THE INTERSECTION OF DISCOVERY BOULEVARD AND F.M. 549. 598.20 FT.

PREPARED BY:
WIER & ASSOCIATES, INC.
ENGINEERS SURVEYORS LAND PLANNERS
701 HIGHLANDER BLVD., SUITE 300 ARLINGTON, TEXAS 76015 METRO (817)467-7700
www.WierAssociates.com
Texas Firm Registration No. F-2776



**ROCKWALL
TECHNOLOGY
PARK
PHASE IV**

**WATER LINE 'D'
PLAN VIEW
STA 0+00 TO STA 8+00**



COPYRIGHT ©
WIER & ASSOCIATES, INC.
LAST SHEET EDIT
DATE 10-30-2015
WA# 12209

**SHEET NO.
U102**