

\* ALL RESPONSIBILITY FOR ADEQUACY OF DESIGN REMAINS WITH THE DESIGN ENGINEER. THE CITY OF ROCKWALL, IN REVIEWING AND RELEASING PLANS FOR CONSTRUCTION, ASSUMES NO RESPONSIBILITY FOR ADEQUACY OF DESIGN.\*

**CAUTION !!**

EXISTING UTILITIES ARE INDICATED ON THE PLANS FROM AVAILABLE INFORMATION. IT SHALL BE THE RESPONSIBILITY OF THE CONTRACTOR TO VERIFY THE LOCATION OF ALL UTILITIES, TO NOTIFY ALL UTILITY COMPANIES OF THE CONTRACTORS OPERATIONS, TO PROTECT ALL UTILITIES FROM DAMAGE, TO REPAIR ALL UTILITIES DAMAGED DUE TO THE CONTRACTORS OPERATIONS, AND TO NOTIFY THE ENGINEER PROMPTLY OF ALL CONFLICTS OF THE WORK WITH EXISTING UTILITIES.

**\* BENCH MARKS \***

BM A - AN 'X' CUT IN THE BACK OF CURB LOCATED AT THE SOUTH RIGHT-OF-WAY LINE OF SPRINGER ROAD ±2470' EAST OF THE INTERSECTION OF SPRINGER ROAD AND F.M. 549. 598.80 FT.

BM B - AN 'X' CUT IN THE BACK OF CURB LOCATED AT THE NORTH RIGHT-OF-WAY LINE OF DISCOVERY BOULEVARD ±580' EAST OF THE INTERSECTION OF DISCOVERY BOULEVARD AND F.M. 549. 599.82 FT.

BM C - AN '□' CUT IN DISCOVERY BOULEVARD IN A MEDIAN NOSE ±60' WEST OF THE INTERSECTION OF DISCOVERY BOULEVARD AND F.M. 549. 598.20 FT.

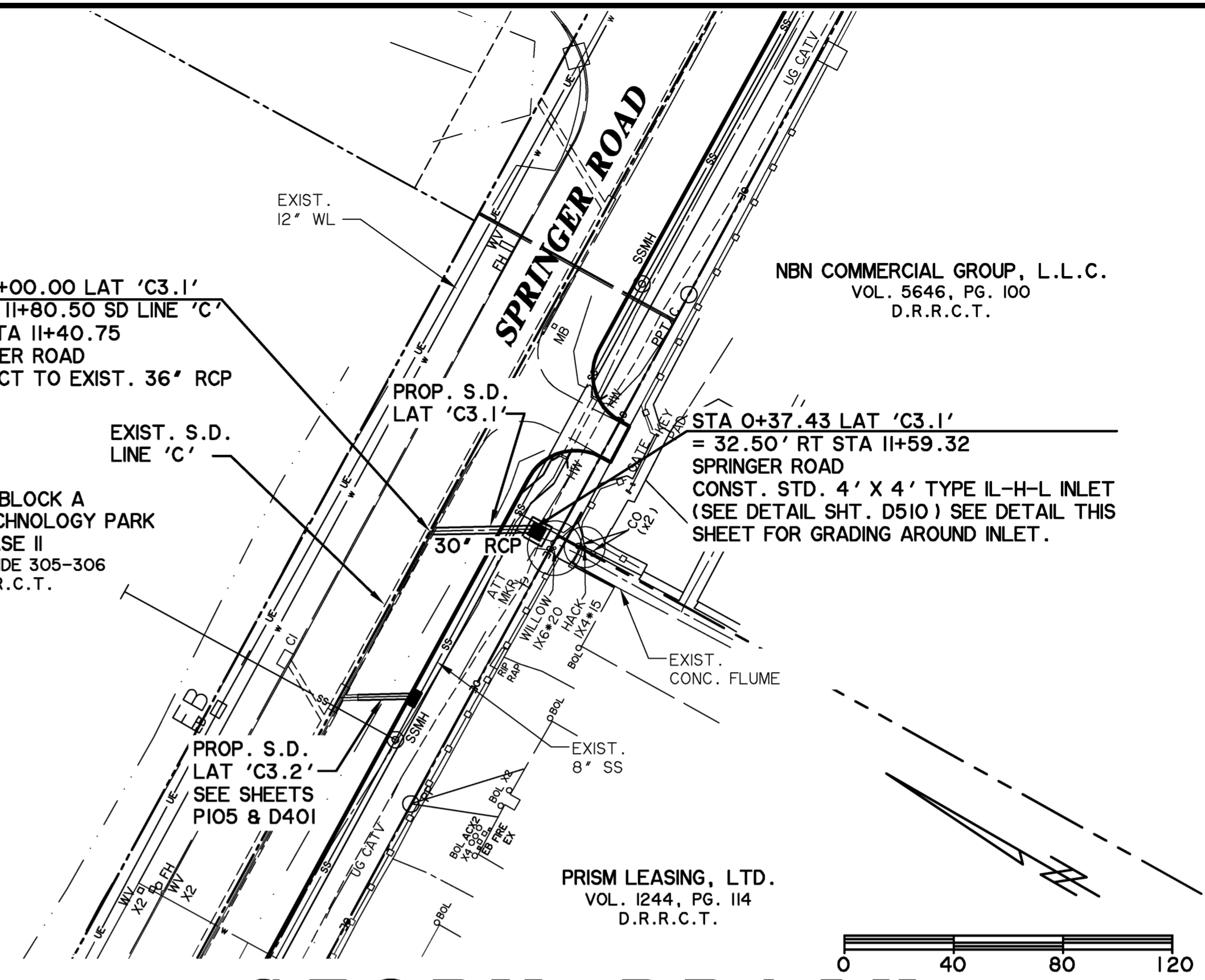
STA 0+00.00 LAT 'C3.1'  
= STA 11+80.50 SD LINE 'C'  
= @ STA 11+40.75  
SPRINGER ROAD  
CONNECT TO EXIST. 36" RCP

LOT I, BLOCK A  
ROCKWALL TECHNOLOGY PARK  
PHASE II  
CAB. E, SLIDE 305-306  
P.R.R.C.T.

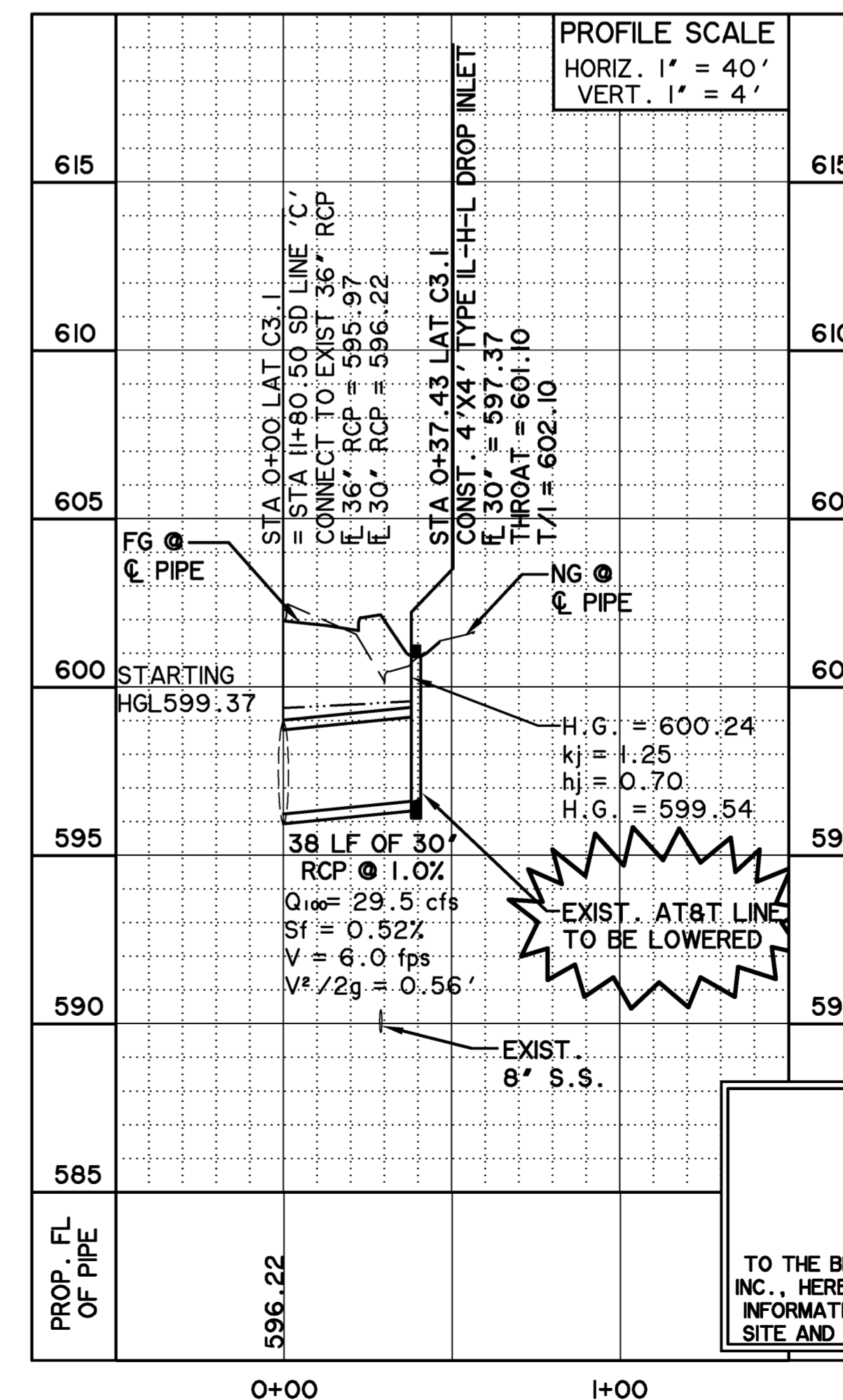
NBN COMMERCIAL GROUP, L.L.C.  
VOL. 5646, PG. 100  
D.R.R.C.T.

STA 0+37.43 LAT 'C3.1'  
= 32.50' RT STA 11+59.32  
SPRINGER ROAD  
CONST. STD. 4' X 4' TYPE IL-H-L INLET  
(SEE DETAIL SHT. D510) SEE DETAIL THIS SHEET FOR GRADING AROUND INLET.

PRISM LEASING, LTD.  
VOL. 1244, PG. 114  
D.R.R.C.T.

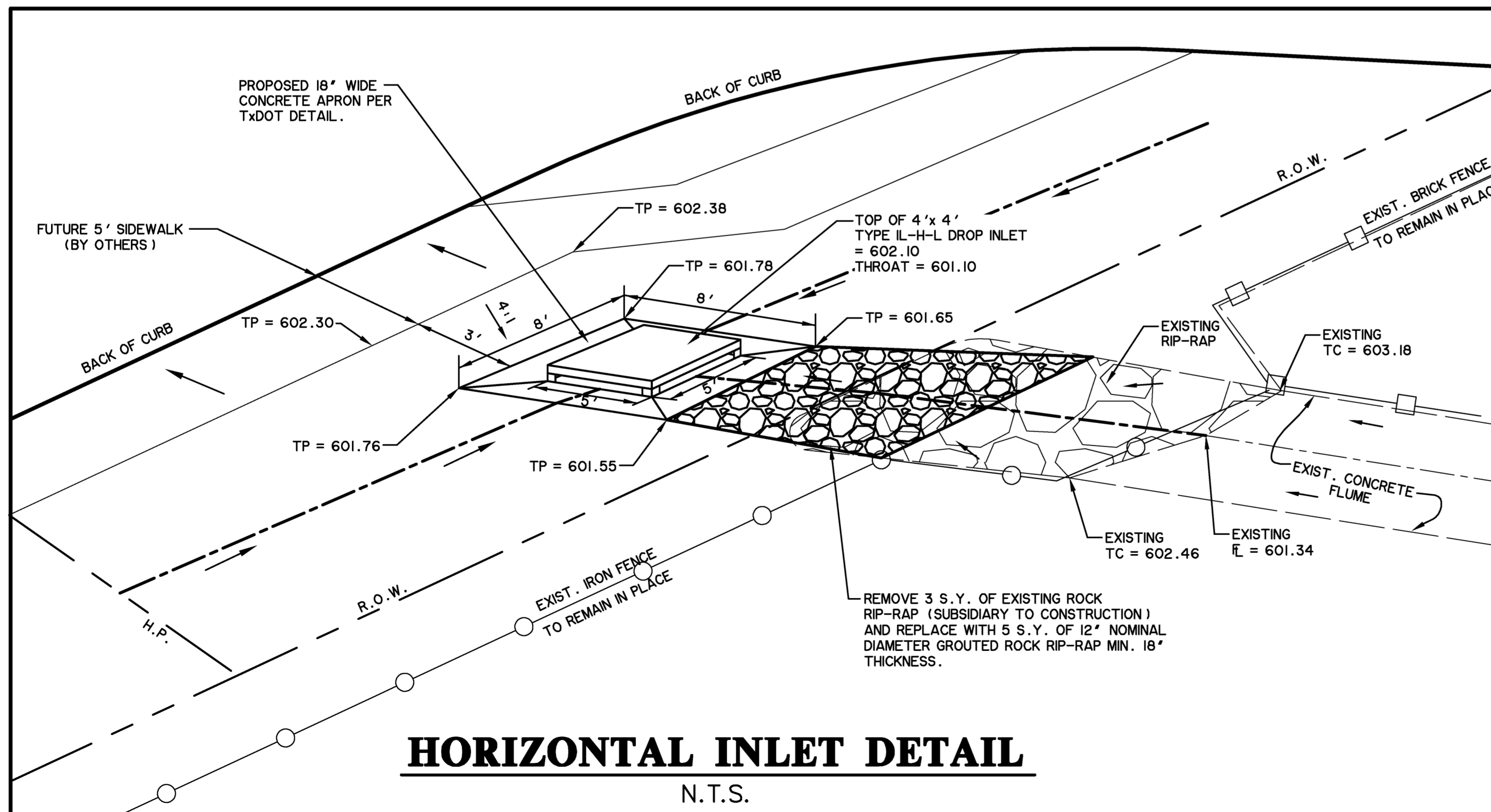


**STORM DRAIN  
LATERAL 'C3.1'**



**RECORD  
DRAWING  
02/02/2015**

TO THE BEST OF OUR KNOWLEDGE WIER & ASSOCIATES, INC., HEREBY STATES THAT THIS PLAN IS AS-BUILT. THIS INFORMATION PROVIDED IS BASED ON SURVEYING AT THE SITE AND INFORMATION PROVIDED BY THE CONTRACTOR.



**HORIZONTAL INLET DETAIL**

N.T.S.

