

PC STA 1+04.57 BEGIN LINE 'M'
= 41.67 RT STA 22+95.42
DATA DRIVE
CONNECT TO FW-O WINGWALL
SEE DETAIL THIS SHEET

ROCKWALL ECONOMIC
DEVELOPMENT CORPORATION
VOL. 5528, PG. 194
D.R.R.C.T.

STA 6+63.49 LINE 'M'
= C STA 0+00.00 LAT 'M2'
= C STA 17+52.50 DATA DRIVE
INSTALL 45° MANUF. WYE

STA 0+31.82 LAT 'M2'
= 22.50' RT STA 17+30.00
DATA DRIVE
CONST. STD. 10' CURB INLET
T/I = 599.43
H.G. = 597.03

STA 3+76.79 LINE 'M'
= C STA 0+00.00 LAT 'M4'
= C STA 0+00.00 LAT 'M3'
= C STA 20+39.20 DATA DRIVE
INSTALL STD 4' X 4' JBOX

STA 0+25.67 LAT 'M4'
= 22.50' RT STA 20+27.40
DATA DRIVE
CONST. STD. 10' CURB INLET
T/I = 597.47
H.G. = 596.39

STA 6+73.01 LINE 'M'
= C STA 0+00.00 LAT 'M1'
= C STA 17+42.99 DATA DRIVE
INSTALL 60° MANUF. WYE

STA 0+25.67 LAT 'M3'
= 22.50' RT STA 20+27.38
DATA DRIVE
CONST. STD. 10' CURB INLET
T/I = 597.46
H.G. = 596.39

STA 0+25.98 LAT 'M1'
= 22.50' LT STA 17+30.00
DATA DRIVE
CONST. STD. 10' CURB INLET
T/I = 599.47
H.G. = 597.07

STA 6+78.01 LINE 'M'
= C STA 17+37.99 DATA DRIVE
INSTALL 24' PLUG

CURVE DATA
R = 65.00'
L = 59.68'
T = 32.13'
D = 52°36'38"
CH = S24°33'31" W
57.61'

ROCKWALL ECONOMIC
DEVELOPMENT CORPORATION
VOL. 3495, PG. 314
D.R.R.C.T.

CAUTION !!

EXISTING UTILITIES ARE INDICATED ON THE PLANS FROM AVAILABLE INFORMATION. IT SHALL BE THE RESPONSIBILITY OF THE CONTRACTOR TO VERIFY THE LOCATION OF ALL UTILITIES, TO NOTIFY ALL UTILITY COMPANIES OF THE CONTRACTORS OPERATIONS, TO PROTECT ALL UTILITIES FROM DAMAGE, TO REPAIR ALL UTILITIES DAMAGED DUE TO THE CONTRACTORS OPERATIONS, AND TO NOTIFY THE ENGINEER PROMPTLY OF ALL CONFLICTS OF THE WORK WITH EXISTING UTILITIES.

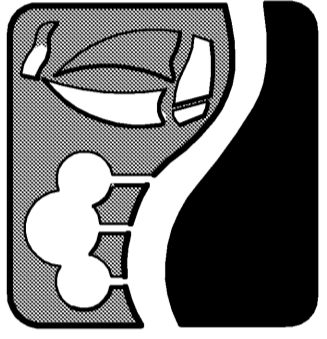
PREPARED BY:
WIER & ASSOCIATES, INC.
ENGINEERS SURVEYORS LAND PLANNERS
701 HIGHLANDER BLVD., SUITE 300 ARLINGTON, TEXAS 76015 METRO (817)467-7700
www.wierassociates.com
Texas Firm Registration No. F-2776

*** BENCH MARKS ***

BM A AN 'X' CUT IN THE BACK OF CURB LOCATED AT THE SOUTH RIGHT-OF-WAY LINE OF SPRINGER ROAD ±2470' EAST OF THE INTERSECTION OF SPRINGER ROAD AND F.M. 549. 598.80 FT.

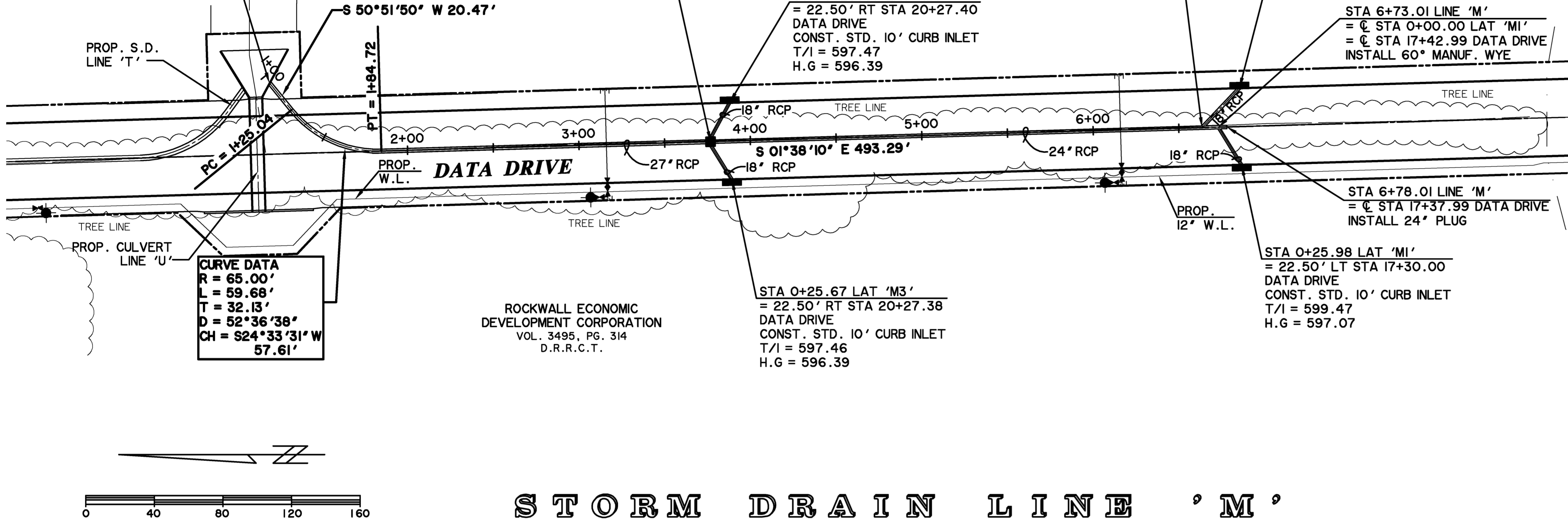
BM B AN 'X' CUT IN THE BACK OF CURB LOCATED AT THE NORTH RIGHT-OF-WAY LINE OF DISCOVERY BOULEVARD ±580' EAST OF THE INTERSECTION OF DISCOVERY BOULEVARD AND F.M. 549. 599.82 FT.

BM C - AN '□' CUT IN DISCOVERY BOULEVARD IN A MEDIAN NOSE ±60' WEST OF THE INTERSECTION OF DISCOVERY BOULEVARD AND F.M. 549. 598.20 FT.

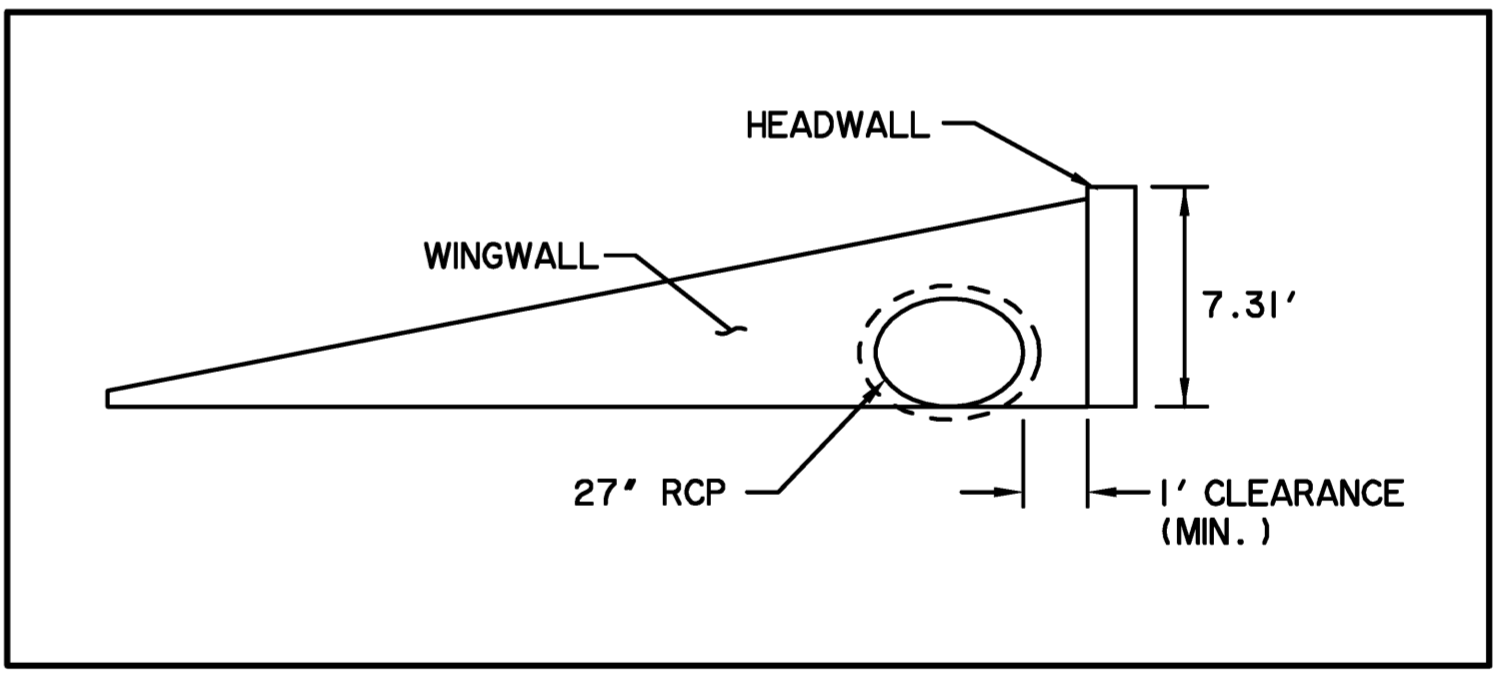
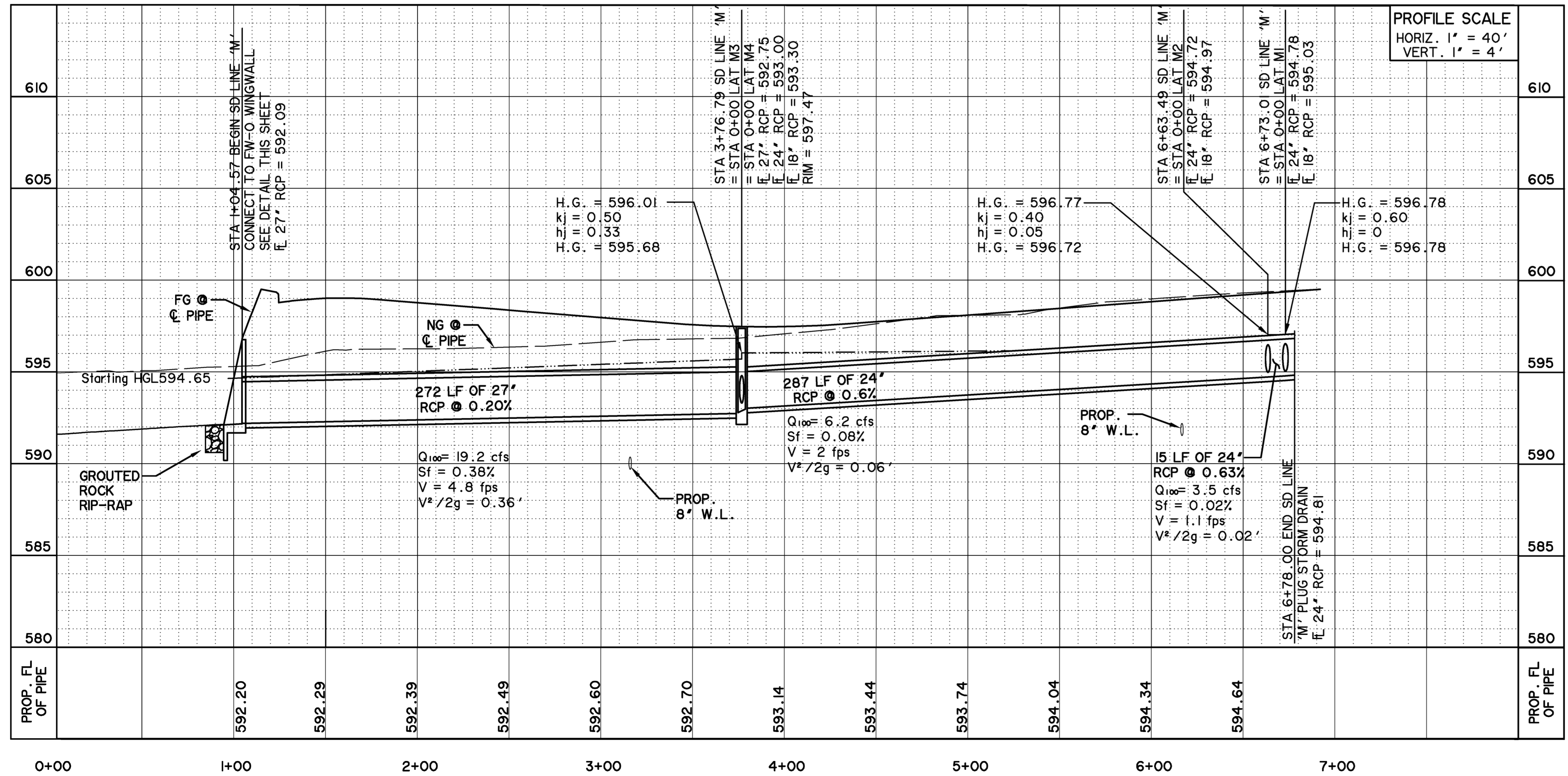


ROCKWALL TECHNOLOGY PARK PHASE IV

STORM DRAIN PLAN AND PROFILE LINE 'M'



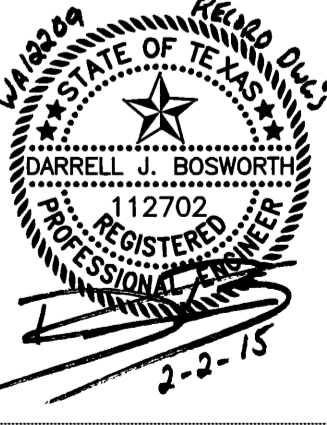
STORM DRAIN LINE 'M'



WINGWALL CONNECTION DETAIL
N.T.S.

* ALL RESPONSIBILITY FOR ADEQUACY OF DESIGN REMAINS WITH THE DESIGN ENGINEER. THE CITY OF ROCKWALL, IN REVIEWING AND RELEASING PLANS FOR CONSTRUCTION, ASSUMES NO RESPONSIBILITY FOR ADEQUACY OF DESIGN.*

RECORD DRAWING
02/02/2015
TO THE BEST OF OUR KNOWLEDGE WIER & ASSOCIATES, INC., HERBY STATES THAT THIS PLAN IS AS-BUILT. THIS INFORMATION PROVIDED IS BASED ON SURVEYING AT THE SITE AND INFORMATION PROVIDED BY THE CONTRACTOR.



COPYRIGHT ©
WIER & ASSOCIATES, INC.
LAST SHEET EDIT
DATE: 10-27-2015
WA# 12209

SHEET NO. D302