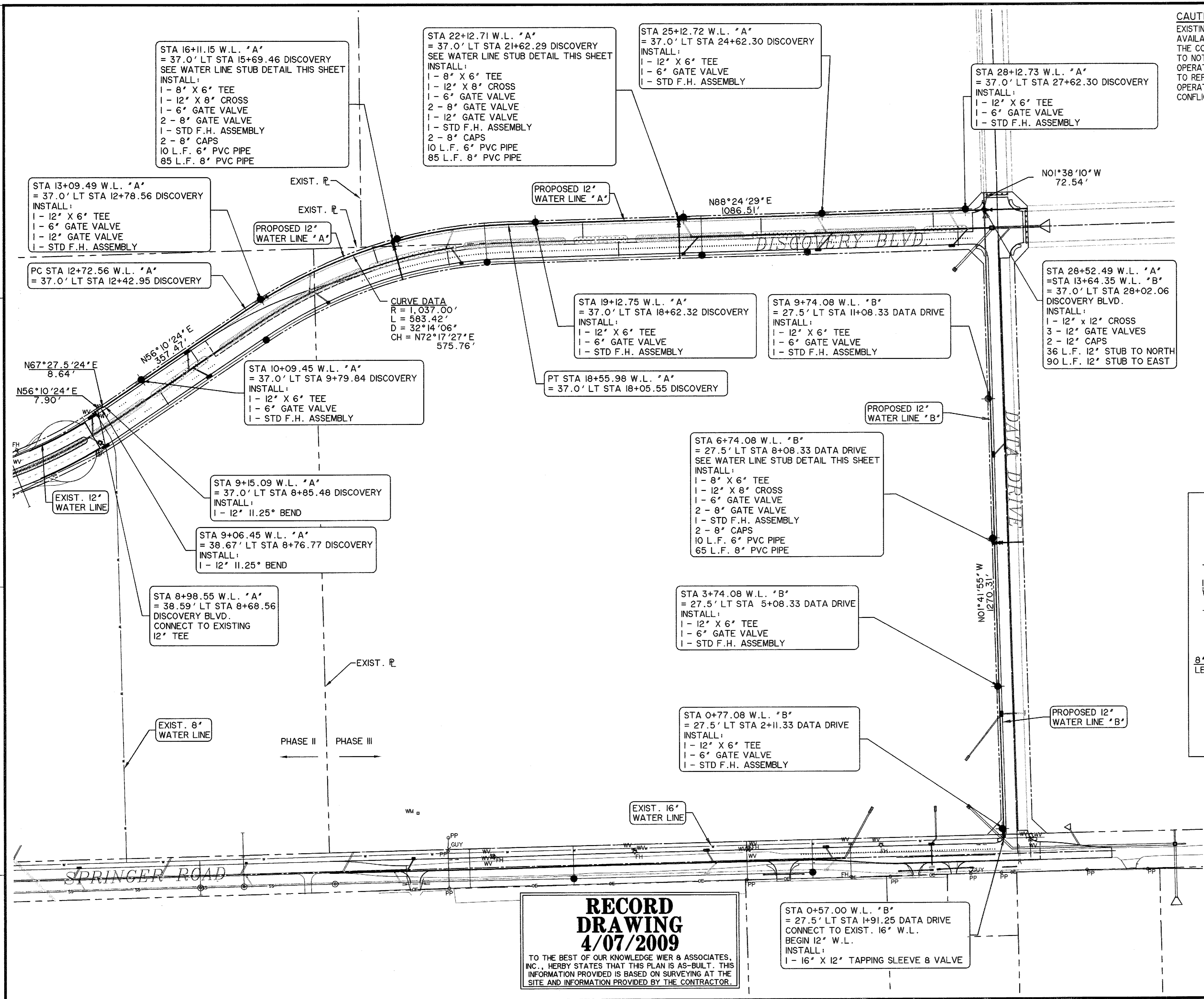
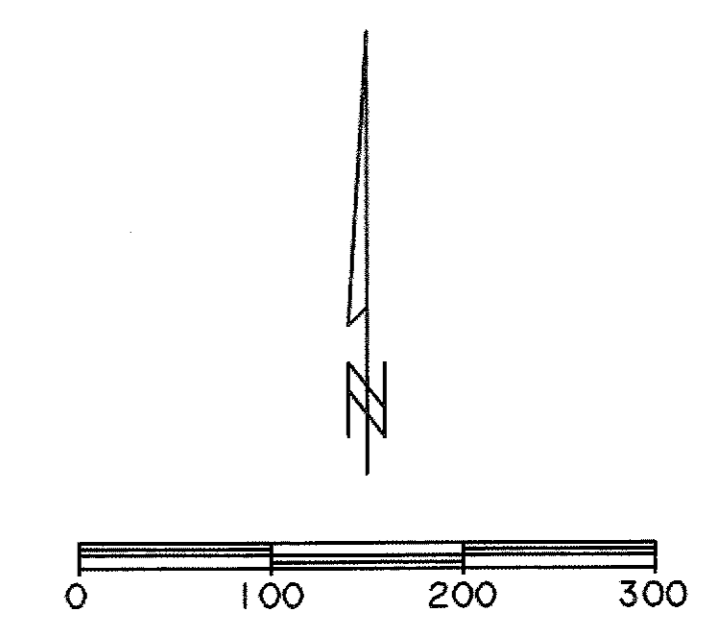


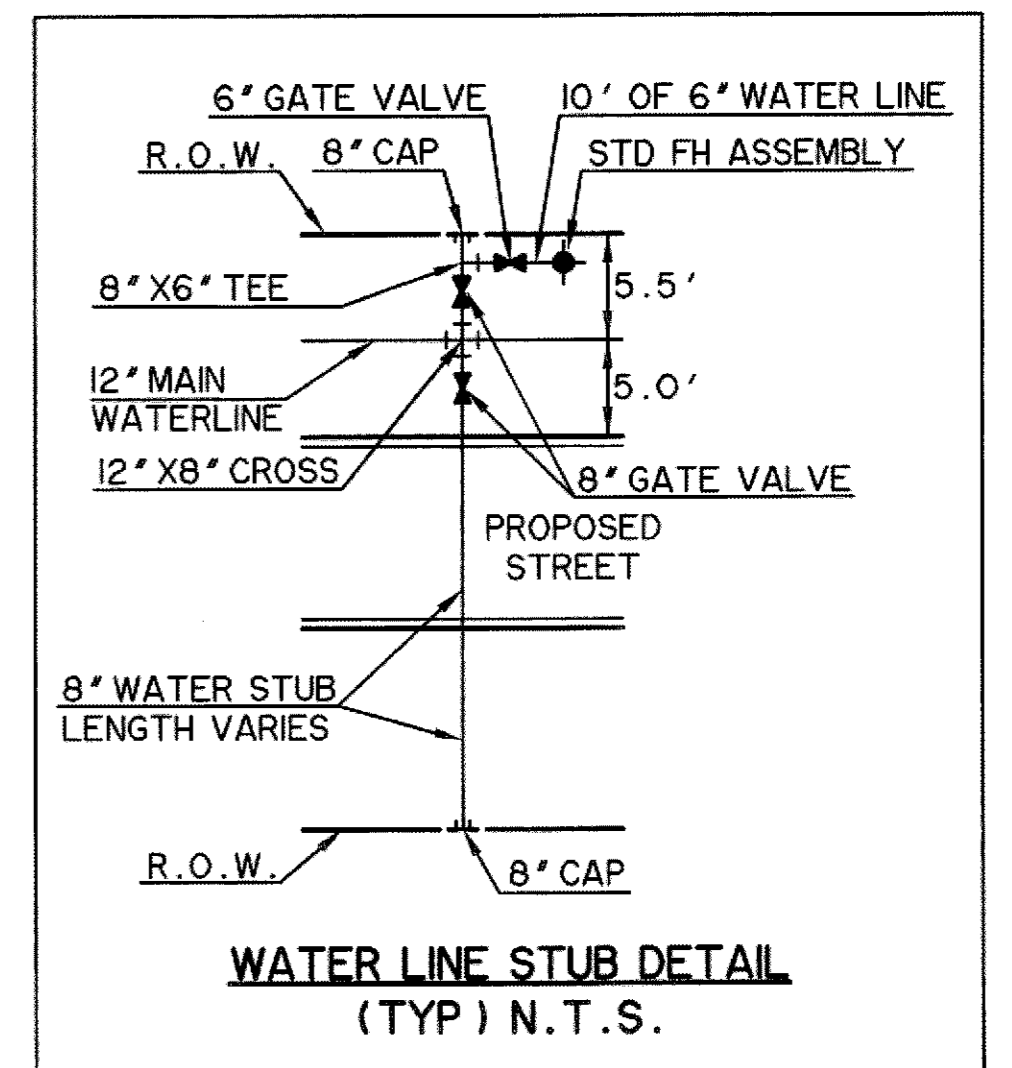
FILE: U101-WATERI-98041-04.dwg



CAUTION !!
 EXISTING UTILITIES ARE INDICATED ON THE PLANS FROM AVAILABLE INFORMATION. IT SHALL BE THE RESPONSIBILITY OF THE CONTRACTOR TO VERIFY THE LOCATION OF ALL UTILITIES, TO NOTIFY ALL UTILITY COMPANIES OF THE CONTRACTORS OPERATIONS, TO PROTECT ALL UTILITIES FROM DAMAGE, TO REPAIR ALL UTILITIES DAMAGED DUE TO THE CONTRACTORS OPERATIONS, AND TO NOTIFY THE ENGINEER PROMPTLY OF ALL CONFLICTS OF THE WORK WITH EXISTING UTILITIES.



- NOTES:**
- CONTRACTOR SHALL ADJUST LOCATION OF PROPOSED WATER LINES AS REQUIRED TO AVOID CONFLICTS WITH STORM SEWER OR OTHER UTILITIES.
 - ALL WATER LINES SHALL HAVE A MINIMUM COVER OF 48" MEASURED FROM TOP OF PIPE UNLESS A GREATER DEPTH IS REQUIRED BY CITY STANDARDS.
 - ON THE NORTH SIDE OF DISCOVERY BLVD, THE WATER LINE SHALL BE INSTALLED AT A DEPTH THAT WILL PROVIDE AT LEAST 48" OF COVER BOTH NOW AND IN THE FUTURE WHEN THE NORTH SIDE OF DISCOVERY BLVD IS CONSTRUCTED. SEE TYPICAL SECTION FOR HALF OF DISCOVERY BLVD.



BENCH MARKS

BM A - AN "X" CUT IN THE BACK OF CURB LOCATED AT THE SOUTH RIGHT-OF-WAY LINE OF SPRINGER ROAD ±2470' EAST OF THE INTERSECTION OF SPRINGER ROAD AND F.M. 549. 598.80 FT.

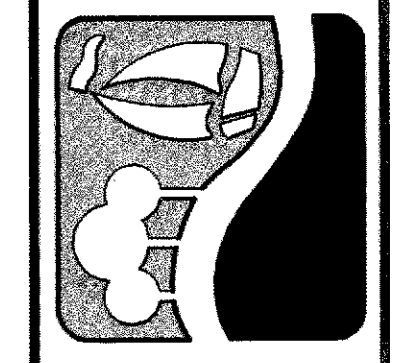
BM B - AN "X" CUT IN THE BACK OF CURB LOCATED AT THE NORTH RIGHT-OF-WAY LINE OF DISCOVERY BOULEVARD ±580' EAST OF THE INTERSECTION OF DISCOVERY BOULEVARD AND F.M. 549. 599.82 FT.

BM C - AN "X" CUT IN DISCOVERY BOULEVARD IN A MEDIAN NOSE ±60' WEST OF THE INTERSECTION OF DISCOVERY BOULEVARD AND F.M. 549. 598.20 FT.

RECORD DRAWING 4/07/2009

TO THE BEST OF OUR KNOWLEDGE WIER & ASSOCIATES, INC., HERBY STATES THAT THIS PLAN IS AS-BUILT. THIS INFORMATION PROVIDED IS BASED ON SURVEYING AT THE SITE AND INFORMATION PROVIDED BY THE CONTRACTOR.

PREPARED BY:
WIER & ASSOCIATES, INC.
 ENGINEERS SURVEYORS LAND PLANNERS
 701 HIGHLANDER BLVD., SUITE 300 ARLINGTON, TEXAS 76015 METRO (817)467-7700
 6849 ELM STREET FRISCO, TEXAS 75034 METRO (214)367-8000
 Texas State Registration No. 2776 www.wierassociates.com



ROCKWALL TECHNOLOGY PARK PHASE III

WATER LAYOUT

STATE OF TEXAS
 REGISTERED PROFESSIONAL ENGINEER
 RONALD RAMIREZ
 81821
 COPYRIGHT © WIER & ASSOCIATES, INC.
 LAST SHEET EDIT DATE 04-07-2009
 WA# 98041.04
SHEET NO. U101