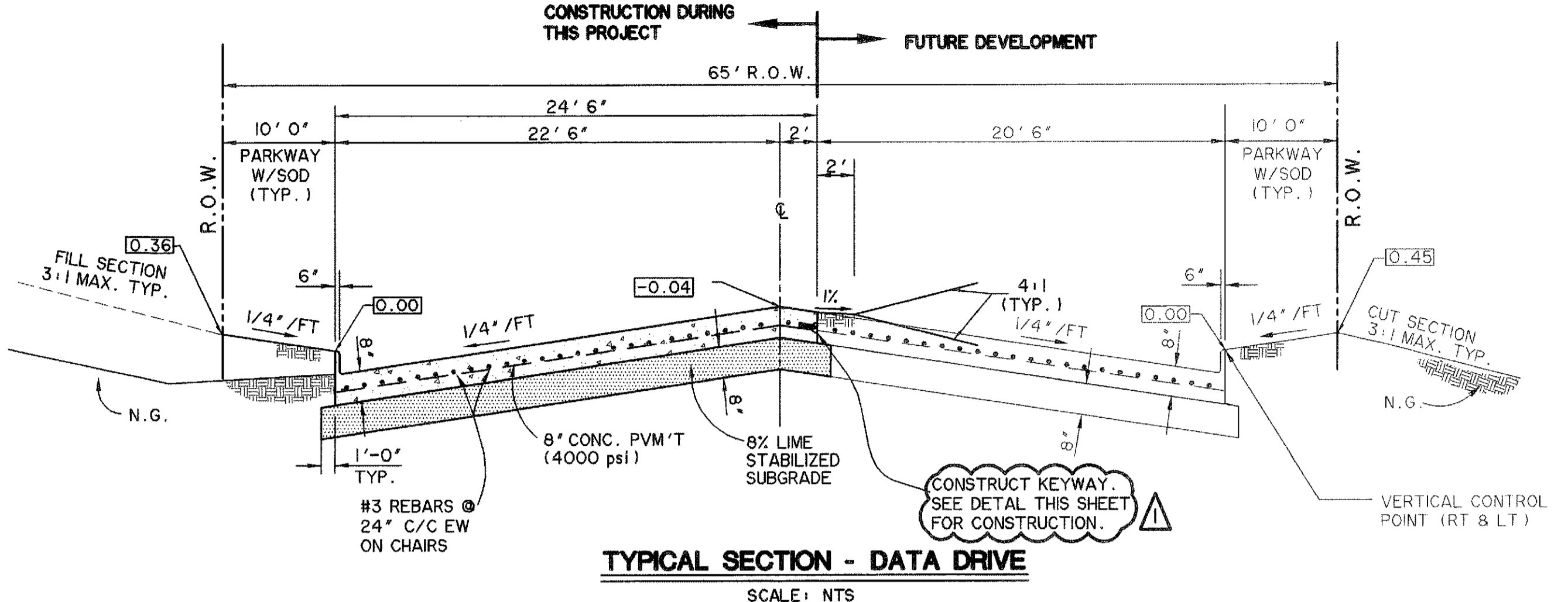
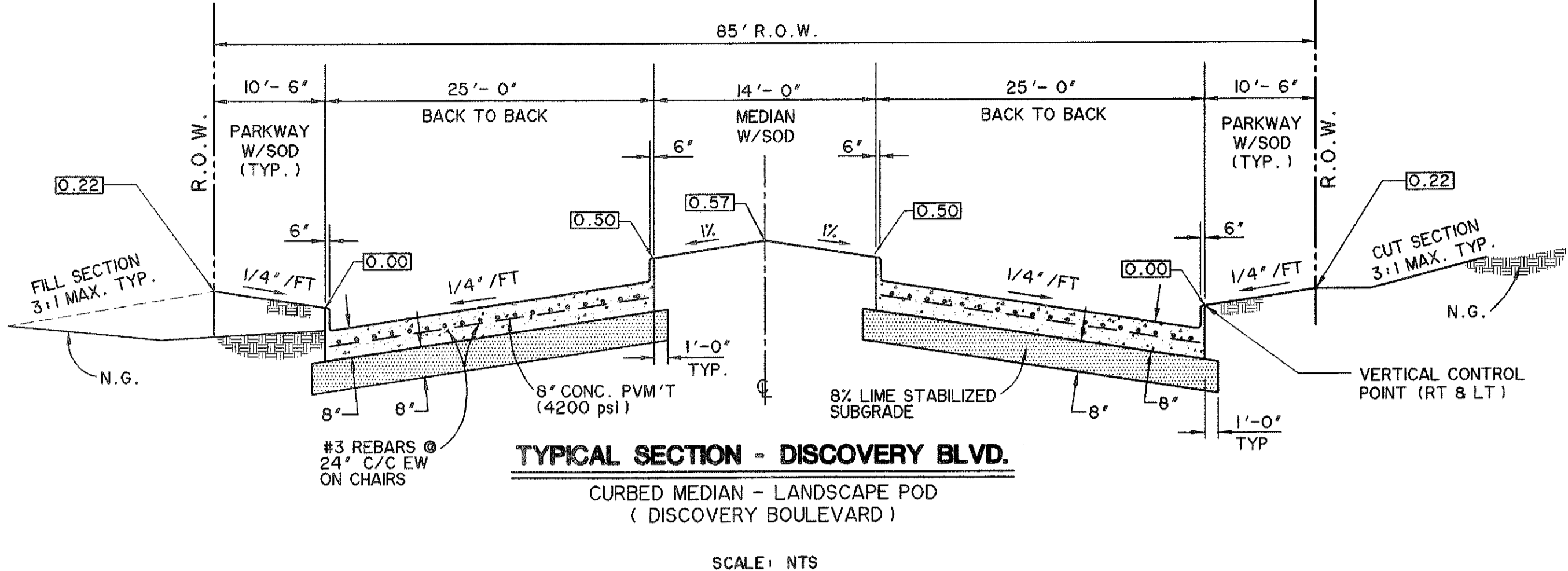


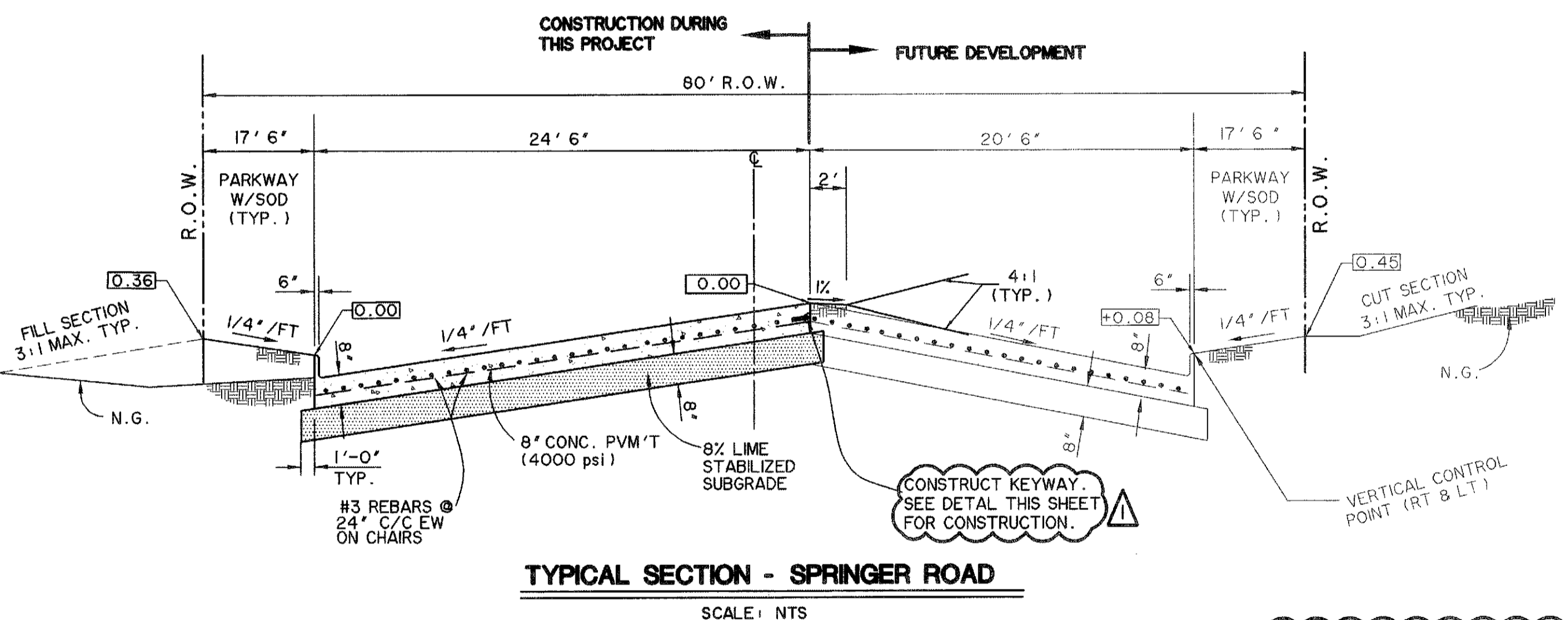
NOTES: 0.50 1. DENOTES DISTANCE IN DECIMAL FEET ABOVE PROFILE GRADE LT.
 2. A 25' LANDSCAPE, PEDESTRIAN, AND UTILITY EASEMENT IS PROVIDED ALONG INTERIOR STREETS (REFER TO PLAT). THIS IS TO ALLOW FOR AN AESTHETICALLY PLEASING, MEANDERING SIDEWALK TO BE CONSTRUCTED BY THE DEVELOPER. MINIMUM DISTANCE FROM R.O.W. TO SIDEWALK SHALL BE 2 FEET.



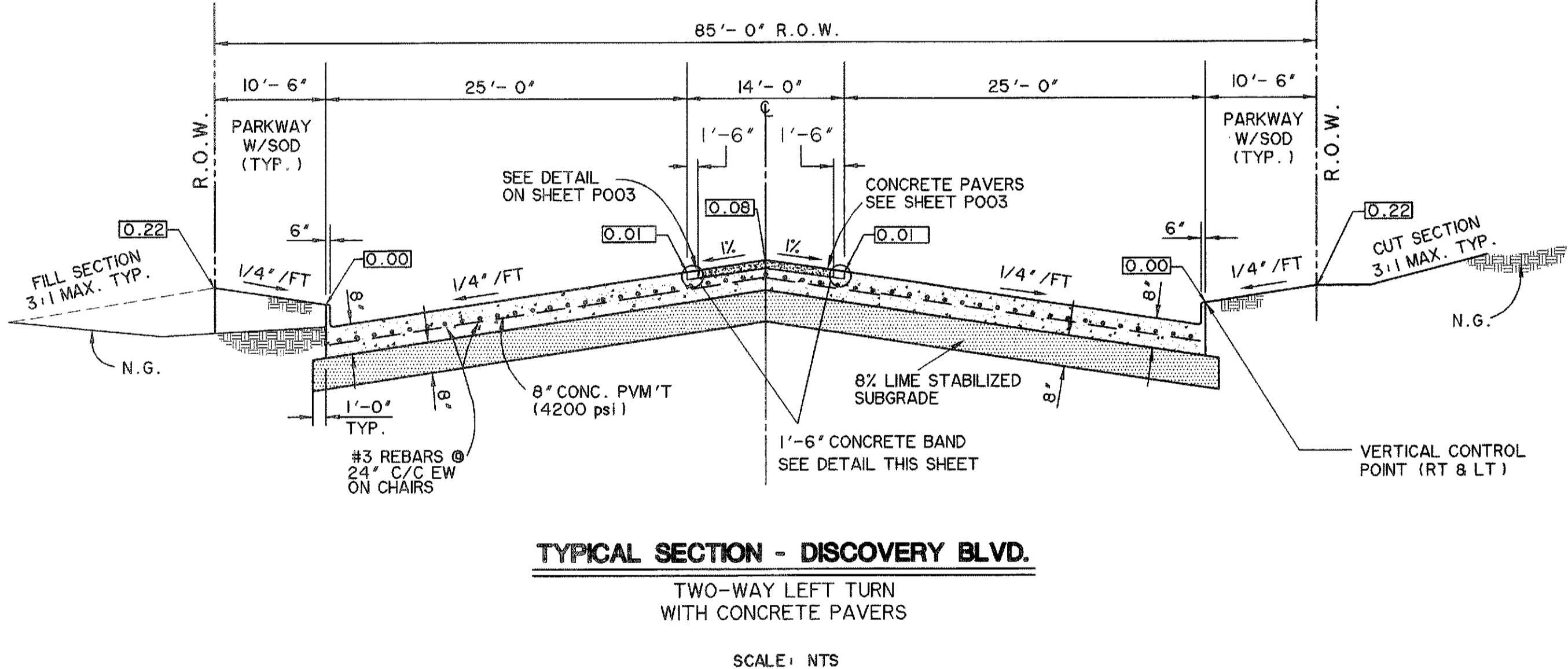
TYPICAL SECTION - DATA DRIVE
SCALE: NTS



TYPICAL SECTION - DISCOVERY BLVD.
CURBED MEDIAN - LANDSCAPE POD
(DISCOVERY BOULEVARD)
SCALE: NTS



TYPICAL SECTION - SPRINGER ROAD
SCALE: NTS

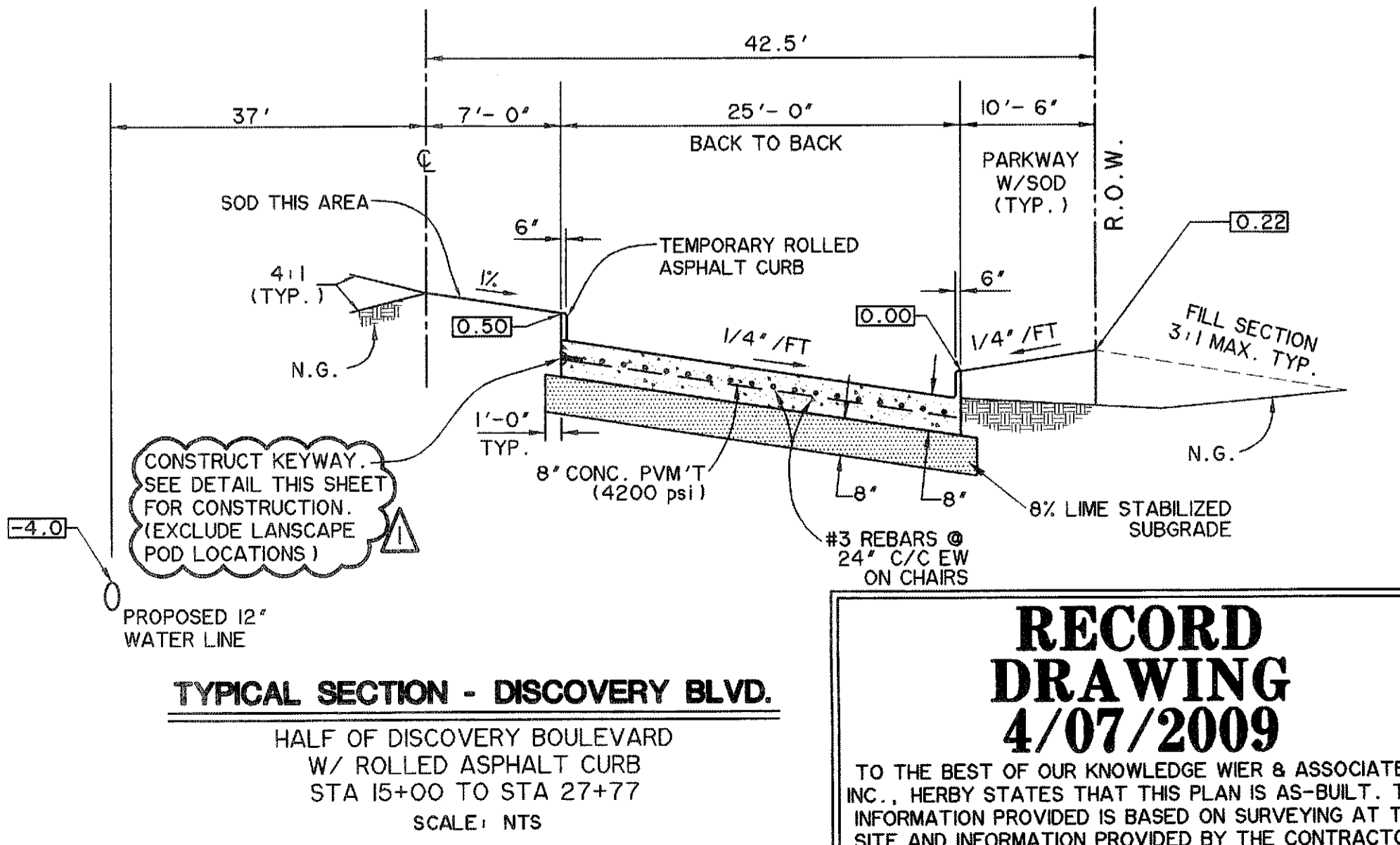
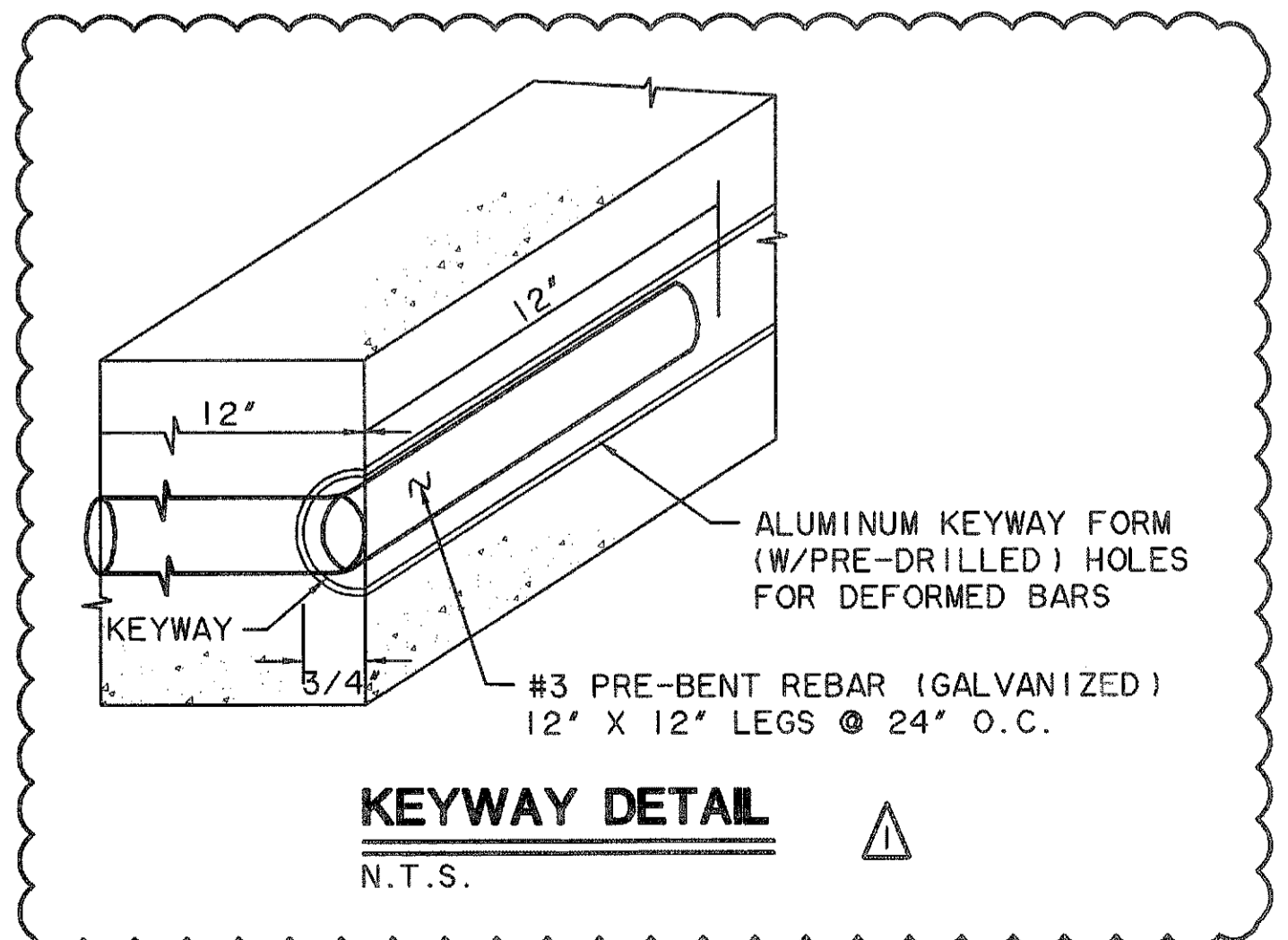


TYPICAL SECTION - DISCOVERY BLVD.
TWO-WAY LEFT TURN
WITH CONCRETE PAVERS
SCALE: NTS

- NOTE: 1. ALL CONSTRUCTION SHALL CONFORM TO THE CITY OF ROCKWALL STANDARD CONSTRUCTION DETAILS AND NCTCOG 3rd EDITION. TYPICAL SECTIONS ARE REPLACED BY THOSE SHOWN ON THIS SHEET.
2. PLACE MIN. 4" TOPSOIL FROM ON SITE SOURCE IN PARKWAYS, SLOPES, AND DISTURBED AREAS. SODDING WILL BE USED ON ALL PARKWAYS. HYDROMULCH SEED WITH BERMUDA GRASS (PER SPECIFICATIONS) WILL BE USED ON ALL SLOPES AND DISTURBED AREAS. TOPSOIL SHALL BE A SUBSIDIARY ITEM AND NO SEPARATE MEASUREMENT OR PAYMENT SHALL BE MADE.
3. ALL FILLS SHALL BE COMPACTED TO 95% MIN. PROCTOR DENSITY. FILLS SHALL BE PLACED IN 8" MAXIMUM LIFTS, AND COMPACTION SHALL BE ACCOMPLISHED BY THE USE OF A SHEEPS-FOOT ROLLER.

* SEE SHEET A201 FOR PAVEMENT NOTES

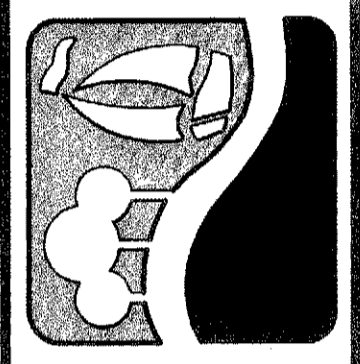
REVISIONS
SHEET REVISED ON 9-18-08
ADDED KEYWAY TO REPLACE THE 3 LF OF GALVANIZED REBAR TO EXTEND BEYOND PAVEMENT EDGE.



TYPICAL SECTION - DISCOVERY BLVD.
HALF OF DISCOVERY BOULEVARD
W/ ROLLED ASPHALT CURB
STA 15+00 TO STA 27+77
SCALE: NTS

RECORD DRAWING
4/07/2009
TO THE BEST OF OUR KNOWLEDGE WIER & ASSOCIATES, INC., HERBY STATES THAT THIS PLAN IS AS-BUILT. THIS INFORMATION PROVIDED IS BASED ON SURVEYING AT THE SITE AND INFORMATION PROVIDED BY THE CONTRACTOR.

PREPARED BY:
WIER & ASSOCIATES, INC.
 ENGINEERS SURVEYORS LAND PLANNERS
 701 HIGHLANDER BLVD., SUITE 300 ARLINGTON, TEXAS 76015 METRO (817)467-7700
 8849 ELM STREET FRISCO, TEXAS 75034 METRO (214)387-8000
 Texas State Registration No. 2776 www.WierAssociates.com



ROCK WALL TECHNOLOGY
PARK PHASE III

TYPICAL SECTIONS

STATE OF TEXAS
 REGISTERED PROFESSIONAL ENGINEER
 RONALD RAMIREZ
 81821
 WIER & ASSOCIATES, INC.
 LAST SHEET EDIT
 DATE: 04-07-2009
 WA# 98041.04
SHEET NO. P001