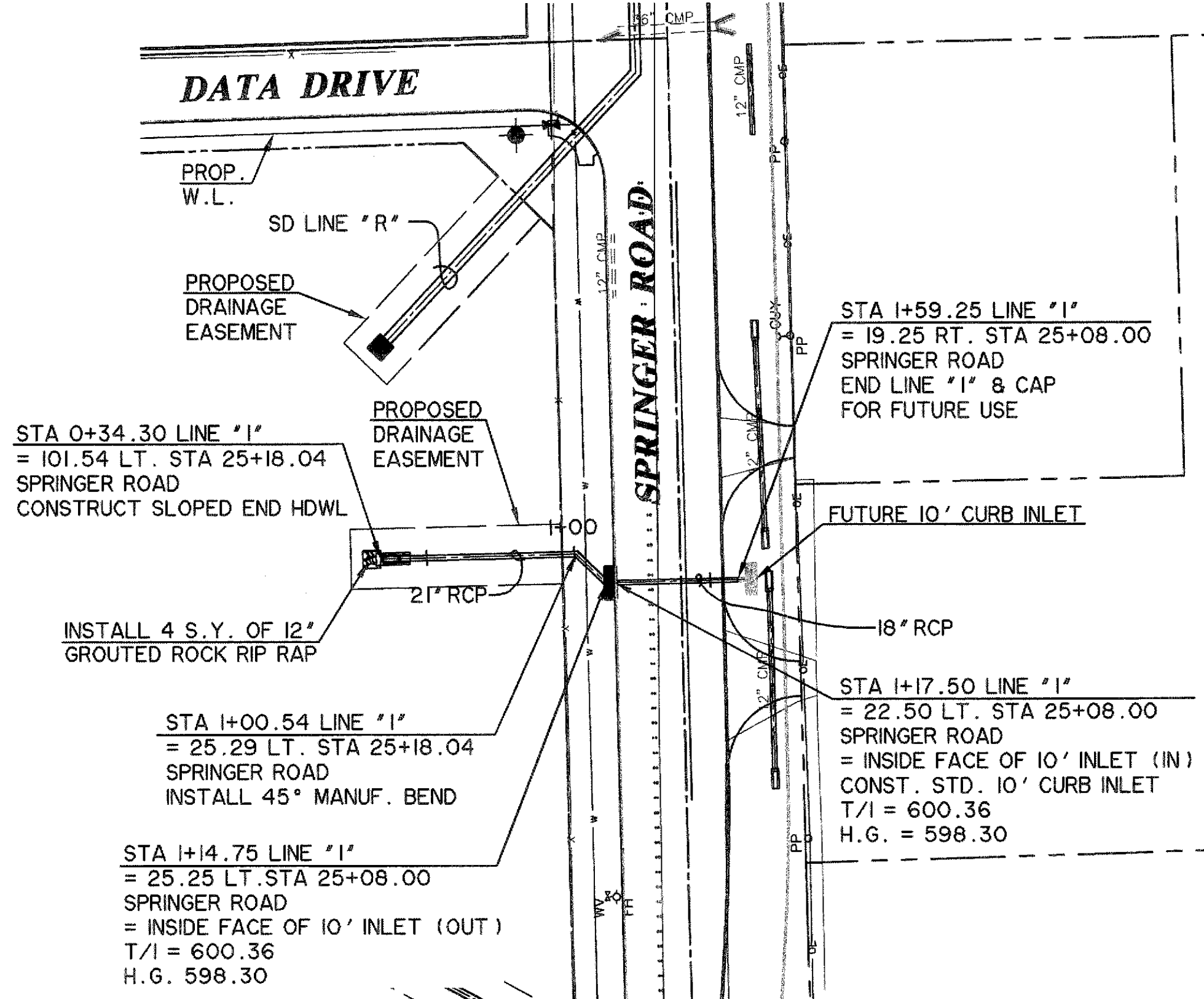
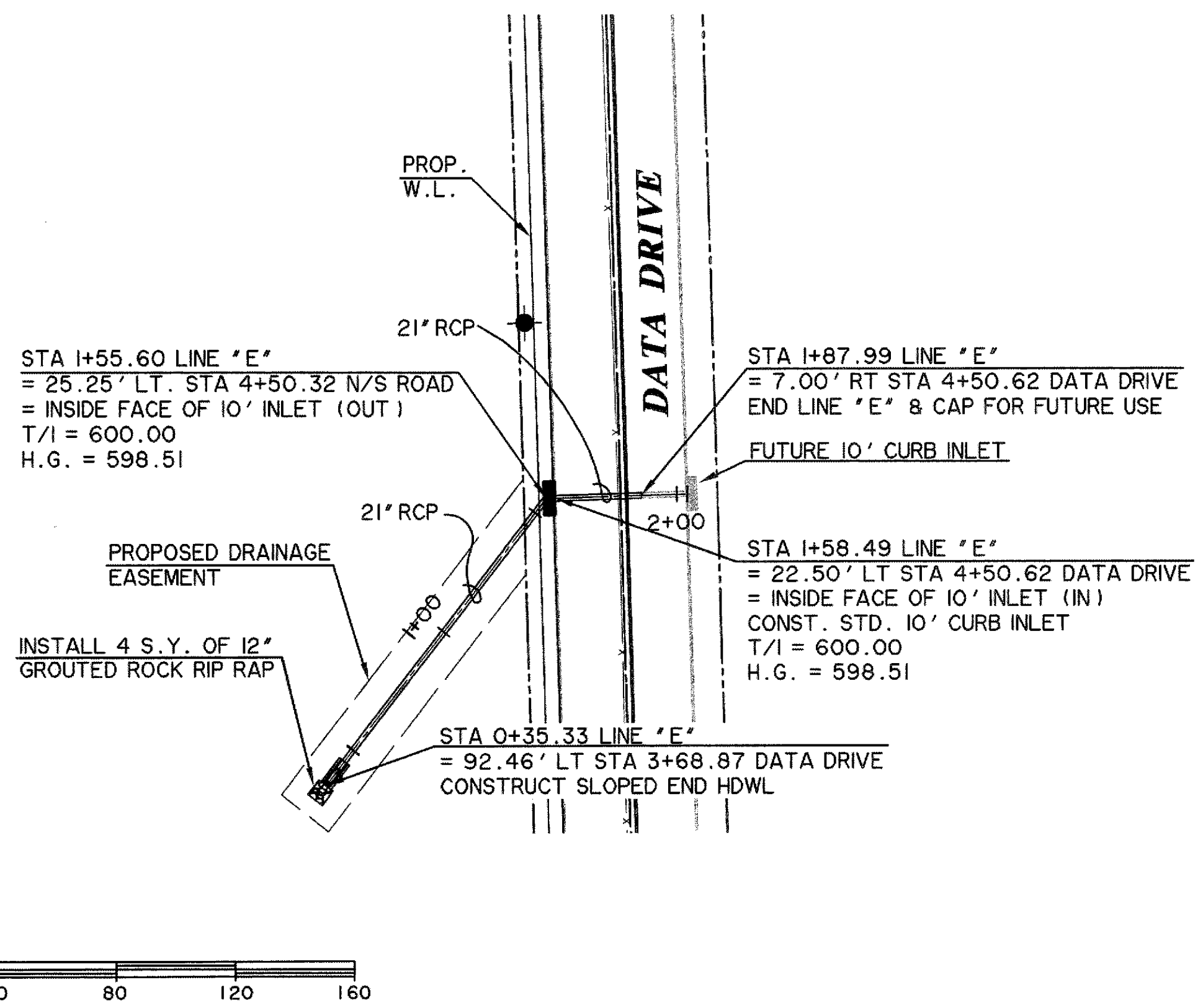


TIME: 8:40 FILE: D305-SD-LN-E-8-1-98041-04.dwg



**CAUTION !!**  
EXISTING UTILITIES ARE INDICATED ON THE PLANS FROM AVAILABLE INFORMATION. IT SHALL BE THE RESPONSIBILITY OF THE CONTRACTOR TO VERIFY THE LOCATION OF ALL UTILITIES, TO NOTIFY ALL UTILITY COMPANIES OF THE CONTRACTOR'S OPERATIONS, TO PROTECT ALL UTILITIES FROM DAMAGE, TO REPAIR ALL UTILITIES DAMAGED DUE TO THE CONTRACTOR'S OPERATIONS, AND TO NOTIFY THE ENGINEER PROMPTLY OF ALL CONFLICTS OF THE WORK WITH EXISTING UTILITIES.

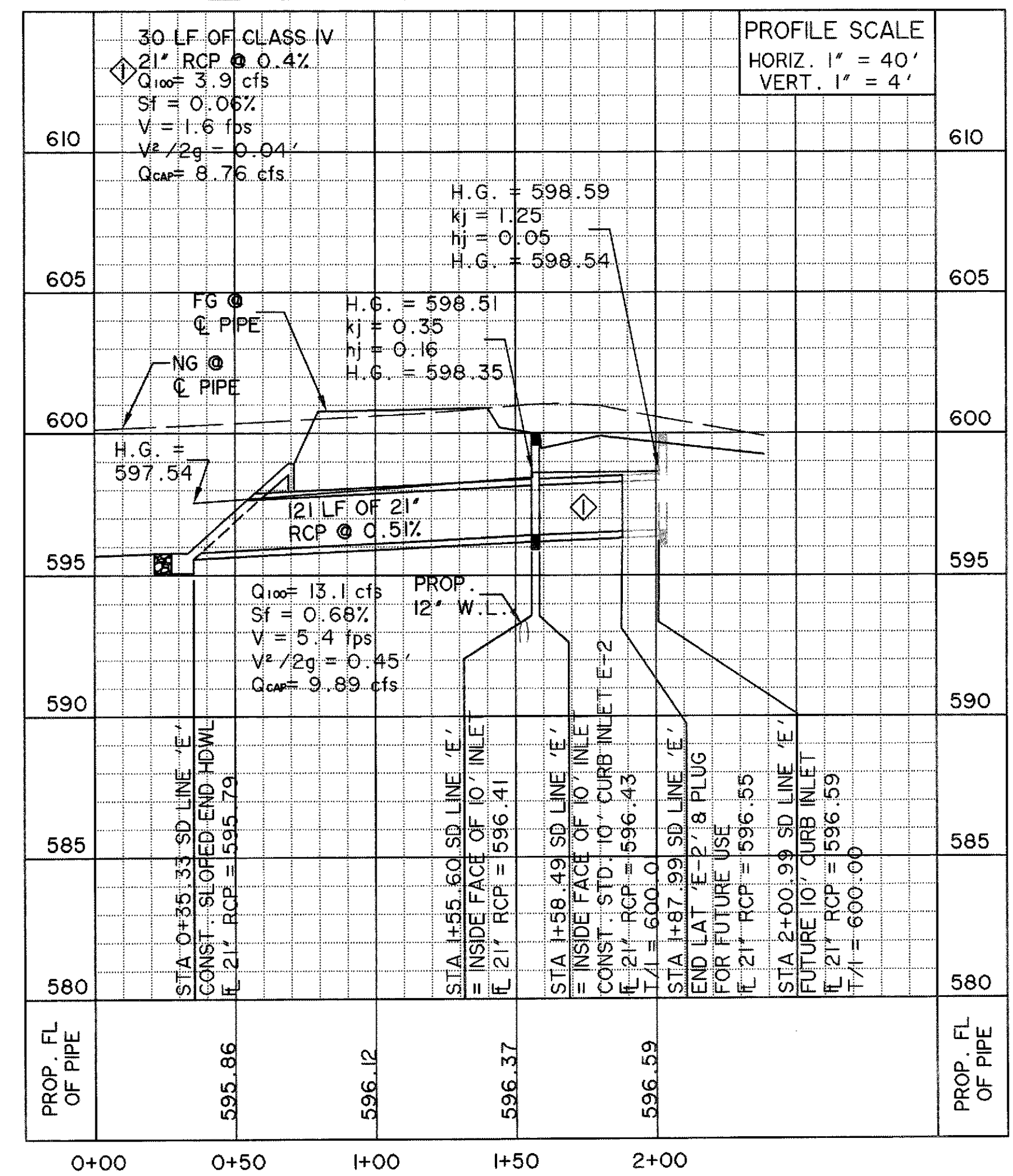
**BENCH MARKS**

BM A AN "X" CUT IN THE BACK OF CURB LOCATED AT THE SOUTH RIGHT-OF-WAY LINE OF SPRINGER ROAD ±2470' EAST OF THE INTERSECTION OF SPRINGER ROAD AND F.M. 549. 598.80 FT.

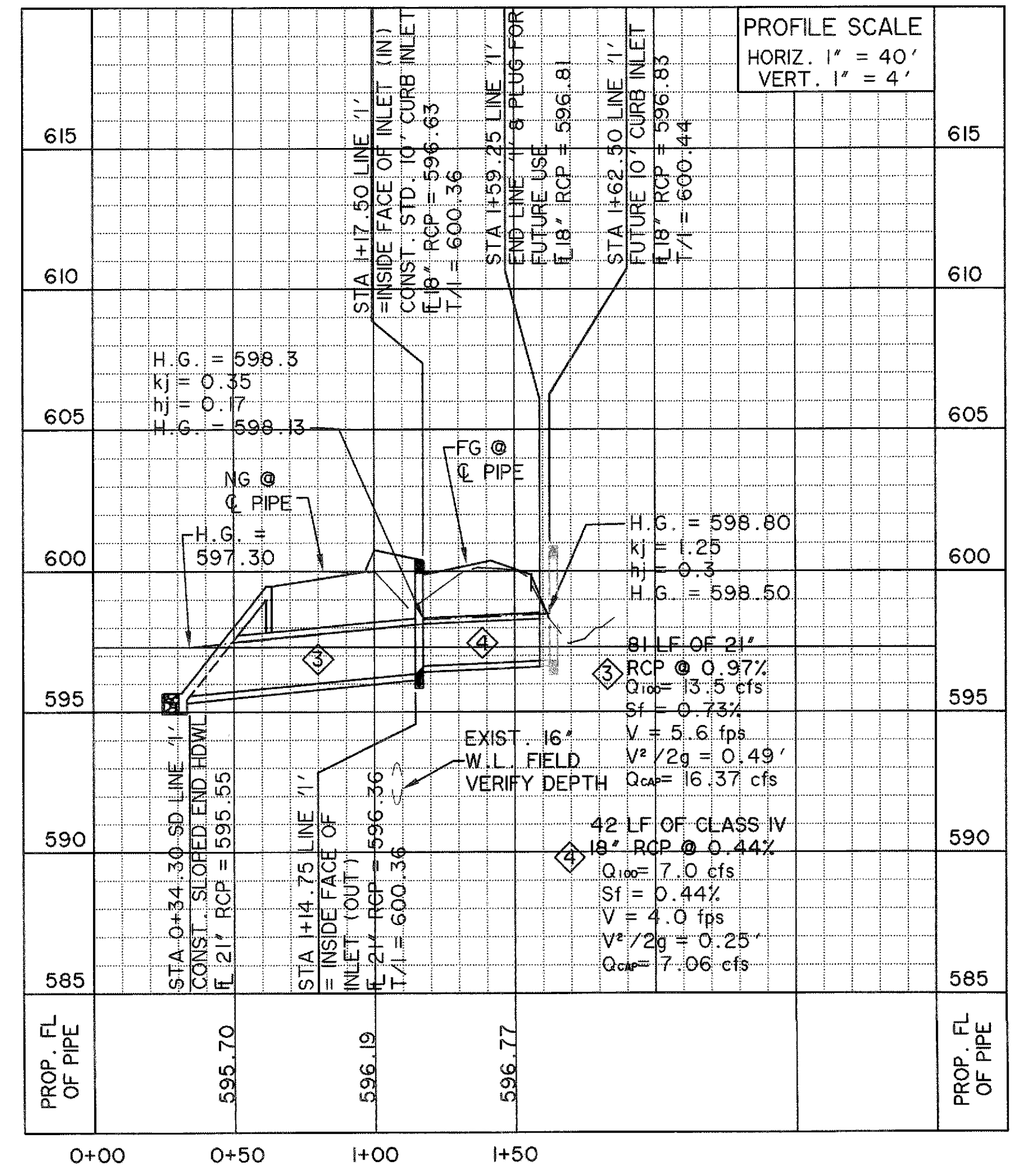
BM B AN "X" CUT IN THE BACK OF CURB LOCATED AT THE NORTH RIGHT-OF-WAY LINE OF DISCOVERY BOULEVARD ±580' EAST OF THE INTERSECTION OF DISCOVERY BOULEVARD AND F.M. 549. 599.82 FT.

BM C - AN "X" CUT IN DISCOVERY BOULEVARD IN A MEDIAN NOSE ±60' WEST OF THE INTERSECTION OF DISCOVERY BOULEVARD AND F.M. 549. 598.20 FT.

**STORM DRAIN LINE 'E'**



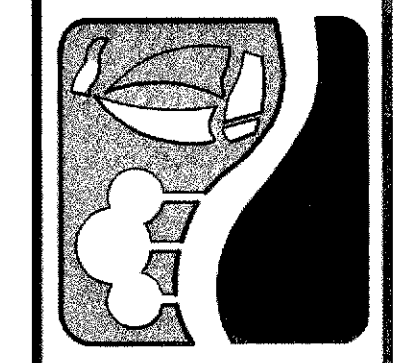
**STORM DRAIN LINE 'I'**



**RECORD DRAWING**  
**4/07/2009**

TO THE BEST OF OUR KNOWLEDGE WIER & ASSOCIATES, INC., HERBY STATES THAT THIS PLAN IS AS-BUILT. THIS INFORMATION PROVIDED IS BASED ON SURVEYING AT THE SITE AND INFORMATION PROVIDED BY THE CONTRACTOR.

PREPARED BY:  
**WIER & ASSOCIATES, INC.**  
ENGINEERS SURVEYORS LAND PLANNERS  
701 HIGHLANDER BLVD., SUITE 300 ARLINGTON, TEXAS 76015 METRO (817)487-7700  
6849 ELM STREET FRISCO, TEXAS 75034 METRO (214)387-8000  
Texas State Registration No. 2776 www.wierassociates.com



**ROCKWALL TECHNOLOGY PARK PHASE III**

**STORM DRAIN PLAN AND PROFILE LINE 'E' & 'I'**

STATE OF TEXAS  
REGISTERED PROFESSIONAL ENGINEER  
RONALD RAMIREZ  
81821  
COPYRIGHT © WIER & ASSOCIATES, INC.  
LAST SHEET EDIT DATE 04-07-2009  
WA# 98041.04  
**SHEET NO. D305**