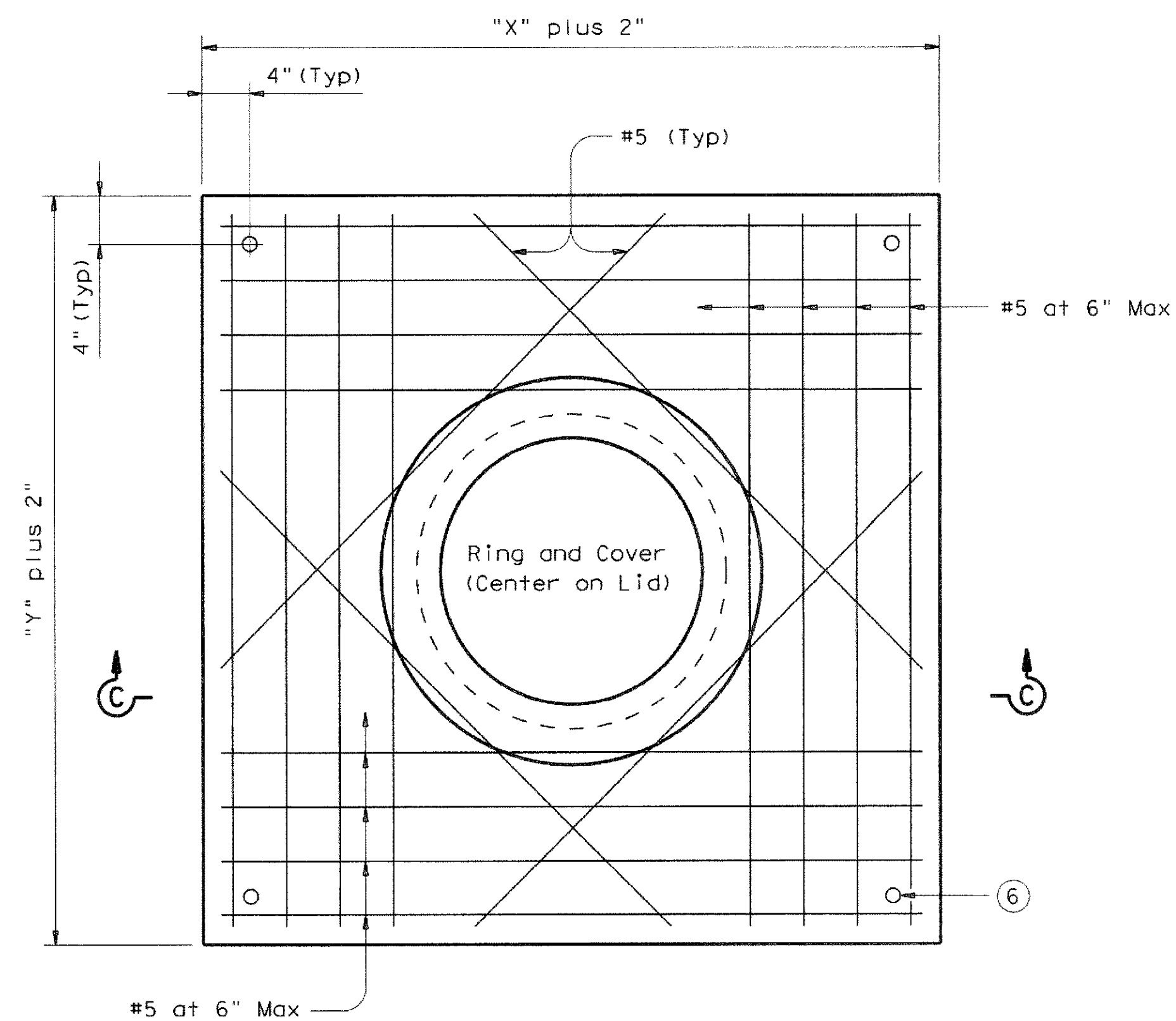
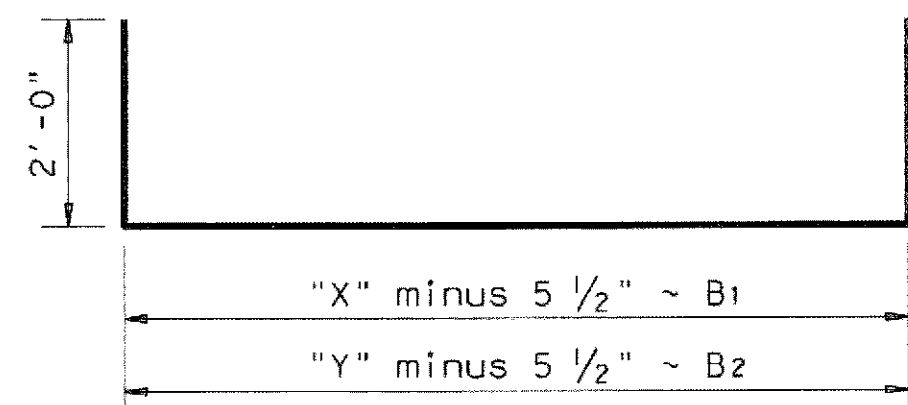


DISCLAIMER: This standard is governed by the "Texas Engineering Practice Act". No warranty of any kind is made by TxDOT for any purpose whatsoever. TxDOT assumes no responsibility for the conversion of this standard to other formats or for incorrect results or damages resulting from its use.

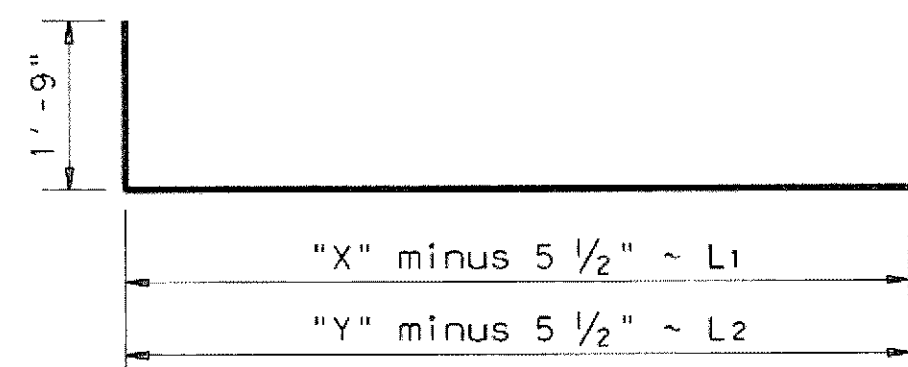
LEVELS DISPLAYED	PAGE
1	1



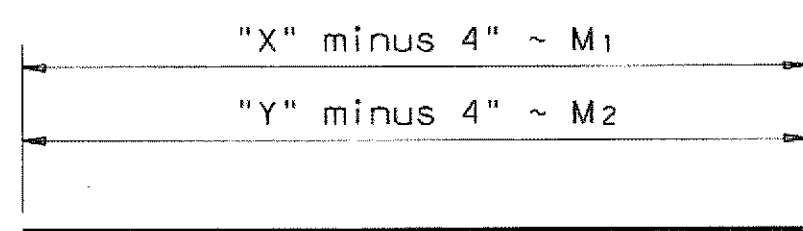
TYPICAL PRECAST LID PLAN



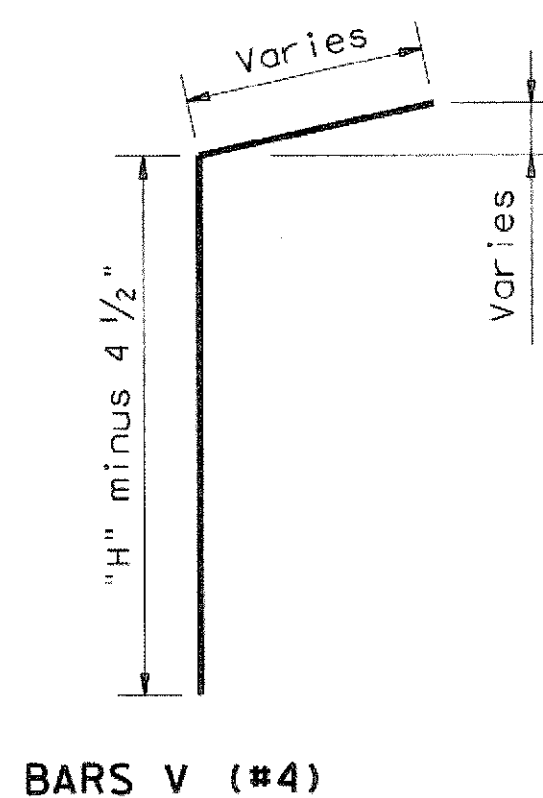
BARS B (#4)



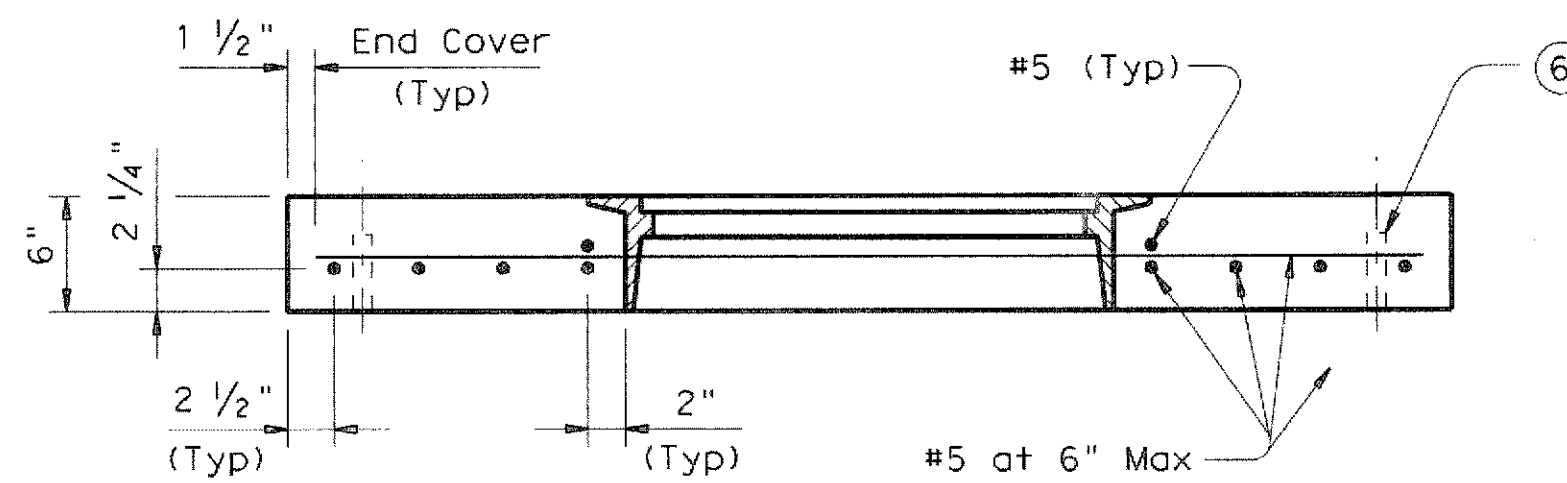
BARS L (#4)



BARS M (#4)

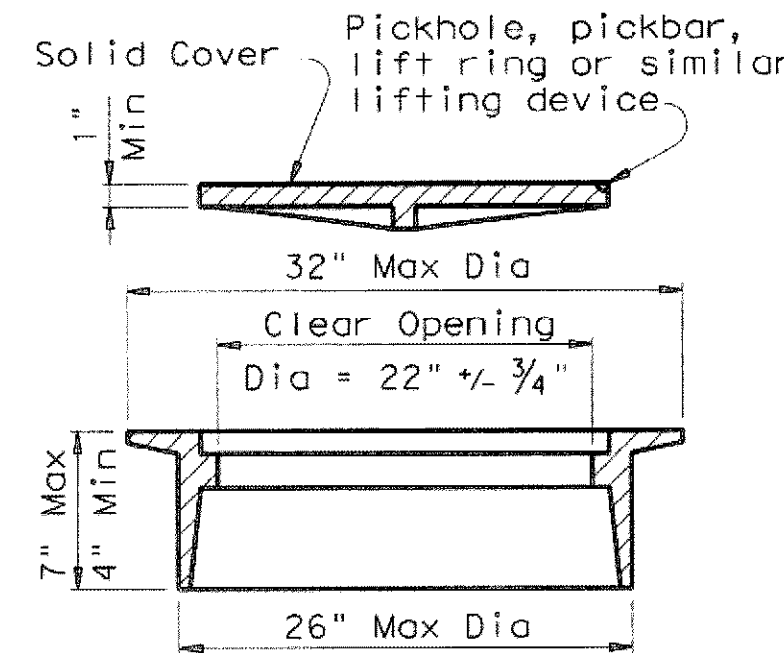


BARS V (#4)



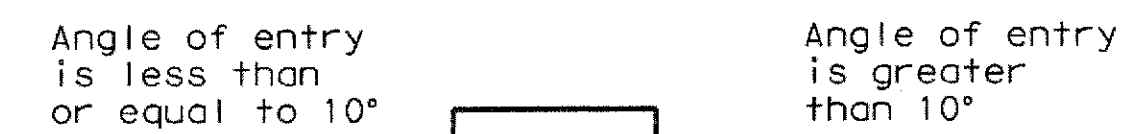
SECTION C-C

⑥ Form holes in lid for Dowels D using 1" Dia x 4" PVC Pipe (SCH 40) (Typ)



RING AND COVER DETAILS

Approximate Weight = 245 lb



PIPE CONNECTION DETAIL

Connecting pipes should enter within 10° of normal to inlet wall. If necessary, pipe elbow or curved approach alignment should be used to stay within this limit.

GENERAL NOTES:

- When approved, precast inlets with equivalent structural capacity may be furnished. Sealed engineering calculations and drawings shall be submitted for approval prior to construction.
- Shop drawings will not be required.
- Apron will be cast-in-place.
- Lid will be precast.
- In areas of conflict between reinforcing steel, blockouts, pipes, anchor bolts or other reinforcing steel, the reinforcement shall be bent or adjusted to clear as directed by the Engineer.
- Structural Steel for grates shall conform to the requirements of ASTM Designation A-36 or AISI Designation M1010-M1020.
- All reinforcing steel shall be Grade 60 unless otherwise noted.
- All concrete shall be Class "A" (f'c = 3,000 psi).
- All steel components except reinforcing, shall be galvanized after fabrication. Galvanizing damaged during transport or construction shall be repaired in accordance with the specifications.
- Inlet is to be used in ditches and medians away from the roadway.

Texas Department of Transportation
Bridge Division

**HORIZONTAL INLET
TYPE H WITH LID
(MAX 48" DIA PIPES)**

IL-H-L

**RECORD
DRAWING
4/07/2009**

TO THE BEST OF OUR KNOWLEDGE WIER & ASSOCIATES, INC., HERBY STATES THAT THIS PLAN IS AS-BUILT. THIS INFORMATION PROVIDED IS BASED ON SURVEYING AT THE SITE AND INFORMATION PROVIDED BY THE CONTRACTOR.

FILE: ilhsta02.dgn	DN: TxDOT	CK: TxDOT	DW: TxDOT	CR: TxDOT
© TxDOT May 2005	DISTRICT	FEDERAL AID PROJECT	SHEET	
REVISIONS			D503	
COUNTY	CONTROL SECT	JOB	HIGHWAY	