

MATCHLINE SHEET P104
STA. 20+00

ROCKWALL ECONOMIC
DEVELOPMENT CORPORATION
VOL. 2224, PG. 226
D.R.R.C.T.

SPRINGER ROAD
47.5' LT PC STA: 26+89.81
DATA DRIVE
2.0' RT PC STA: 2+06.59
TP = 601.20

DATA DRIVE
C STA: 1+59.12
SPRINGER ROAD
C STA: 26+88.06

ROCKWALL ECONOMIC
DEVELOPMENT CORPORATION
VOL. 5528, PG. 194
D.R.R.C.T.

A PI CURBS
SPRINGER ROAD
22.5' LT PI STA: 26+65.44
DATA DRIVE
22.5' LT PI STA: 1+81.74
TP = 601.27

B PI CURBS
SPRINGER ROAD
22.5' LT PI STA: 27+10.45
DATA DRIVE
22.5' RT PI STA: 1+81.50
TP = 601.24

C CONSTRUCT BARRIER FREE
RAMP FOR 5' WIDE SIDEWALK
SEE CITY OF ROCKWALL DETAILS
FOR CONSTRUCTION OF RAMPS

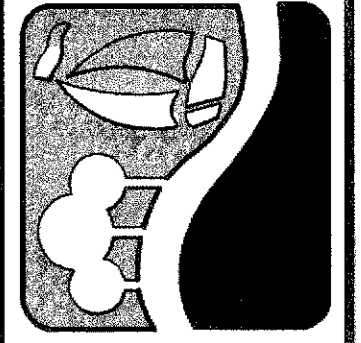
D INSTALL 2-6" GRAY SCHEDULE
40 P.V.C. CONDUITS

- NOTE:
- CONTRACTOR TO LOCATE ALL EXISTING FIRE HYDRANTS, VALVES, AND WATER METERS AND ADJUST TO PROPOSED GRADE.
 - STREET DIMENSIONS ARE FROM BACK OF CURB TO EDGE OF CONCRETE (BC-EC).
 - SEE SHEET P203 FOR STRIPING AND SIGNING LAYOUT FOR SPRINGER ROAD.

**RECORD
DRAWING
4/07/2009**

TO THE BEST OF OUR KNOWLEDGE WIER & ASSOCIATES, INC., HERBY STATES THAT THIS PLAN IS AS-BUILT. THIS INFORMATION PROVIDED IS BASED ON SURVEYING AT THE SITE AND INFORMATION PROVIDED BY THE CONTRACTOR.

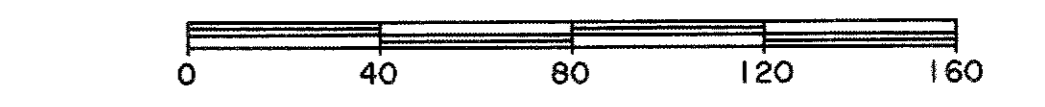
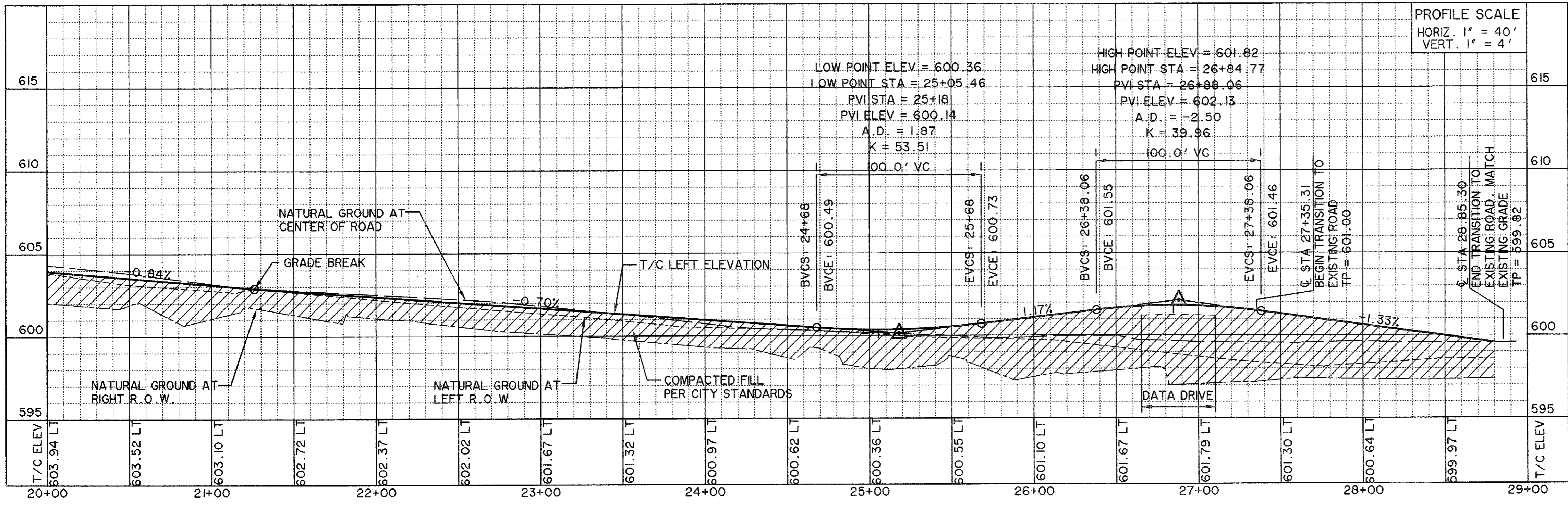
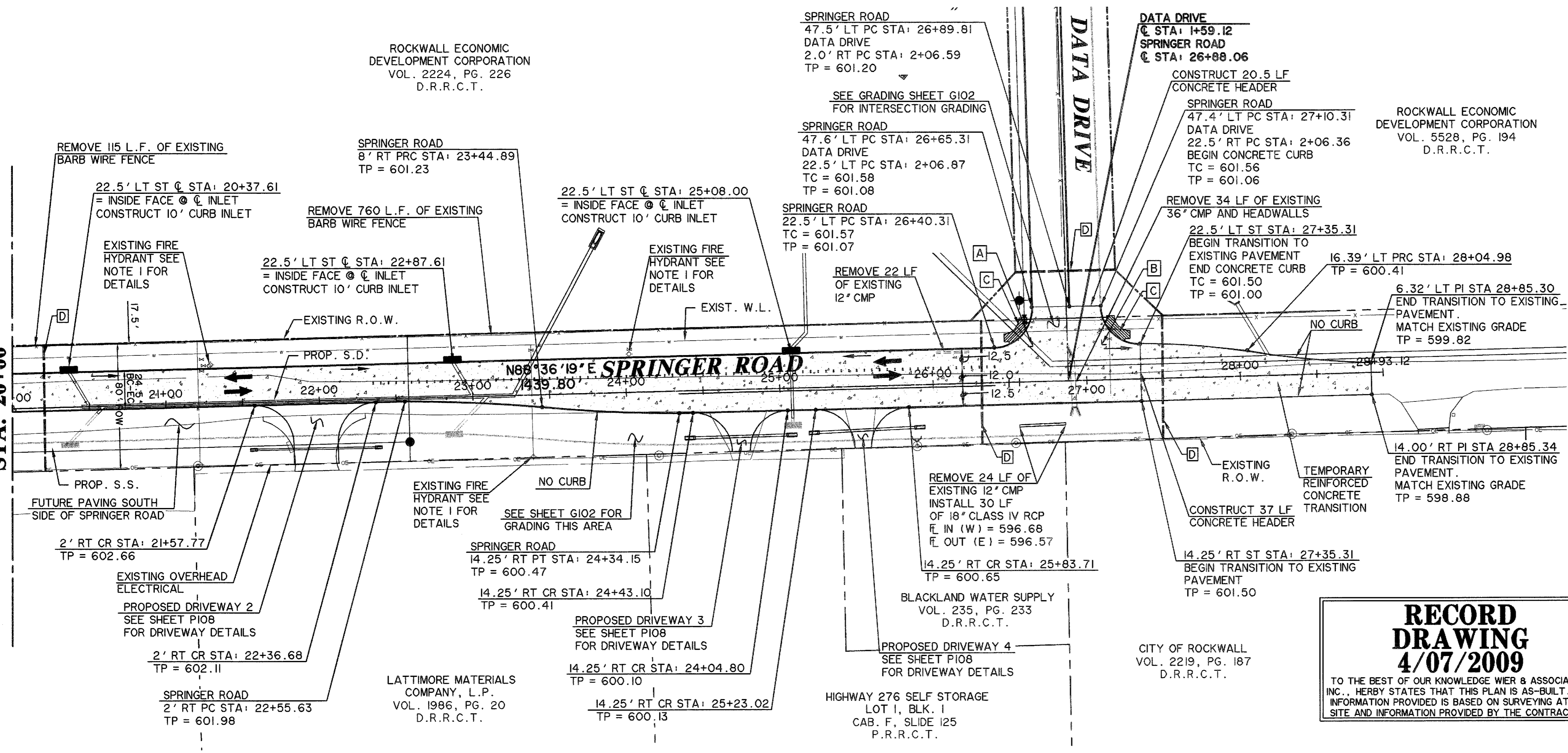
PREPARED BY:
WIER & ASSOCIATES, INC.
ENGINEERS SURVEYORS LAND PLANNERS
701 HIGHLANDER BLVD., SUITE 300 ARLINGTON, TEXAS 76015 METRO (817)467-7700
6849 ELM STREET FRISCO, TEXAS 75034 METRO (214)387-8000
www.WierAssociates.com
Texas State Registration No. 2776



**ROCKWALL
TECHNOLOGY
PARK
PHASE III**

**SPRINGER RD
PAVING PLAN AND PROFILE
STA 20+00 TO STA 27+35.31**

COPYRIGHT ©
WIER & ASSOCIATES, INC.
LAST SHEET EDIT
DATE 04-07-2009
WA# 98041.04
**SHEET NO.
P105**



CAUTION !!
EXISTING UTILITIES ARE INDICATED ON THE PLANS FROM AVAILABLE INFORMATION. IT SHALL BE THE RESPONSIBILITY OF THE CONTRACTOR TO VERIFY THE LOCATION OF ALL UTILITIES, TO NOTIFY ALL UTILITY COMPANIES OF THE CONTRACTORS OPERATIONS, TO PROTECT ALL UTILITIES FROM DAMAGE, TO REPAIR ALL UTILITIES DAMAGED DUE TO THE CONTRACTORS OPERATIONS, AND TO NOTIFY THE ENGINEER PROMPTLY OF ALL CONFLICTS OF THE WORK WITH EXISTING UTILITIES.

BENCH MARKS

BM A AN "X" CUT IN THE BACK OF CURB LOCATED AT THE SOUTH RIGHT-OF-WAY LINE OF SPRINGER ROAD ±2470' EAST OF THE INTERSECTION OF SPRINGER ROAD AND F.M. 549. 598.80 FT.

BM B AN "X" CUT IN THE BACK OF CURB LOCATED AT THE NORTH RIGHT-OF-WAY LINE OF DISCOVERY BOULEVARD ±580' EAST OF THE INTERSECTION OF DISCOVERY BOULEVARD AND F.M. 549. 599.82 FT.

BM C - AN "□" CUT IN DISCOVERY BOULEVARD IN A MEDIAN NOSE ±60' WEST OF THE INTERSECTION OF DISCOVERY BOULEVARD AND F.M. 549. 598.20 FT.