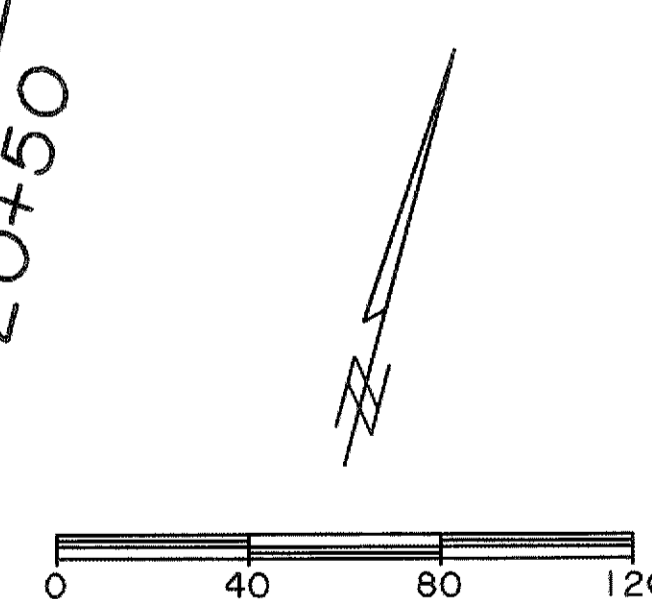
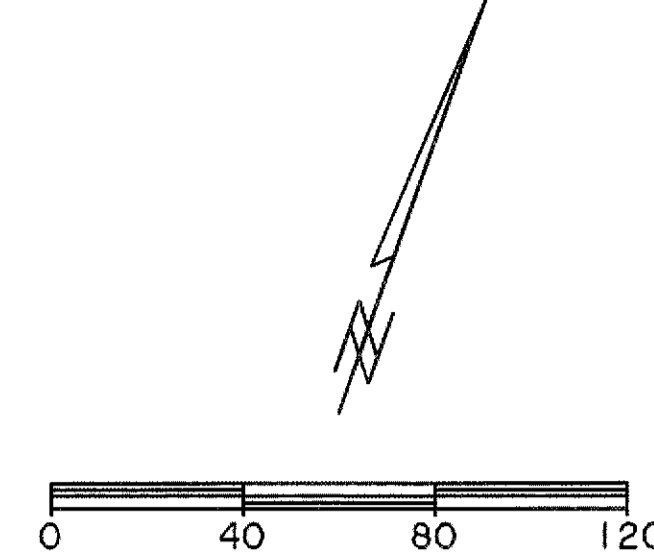
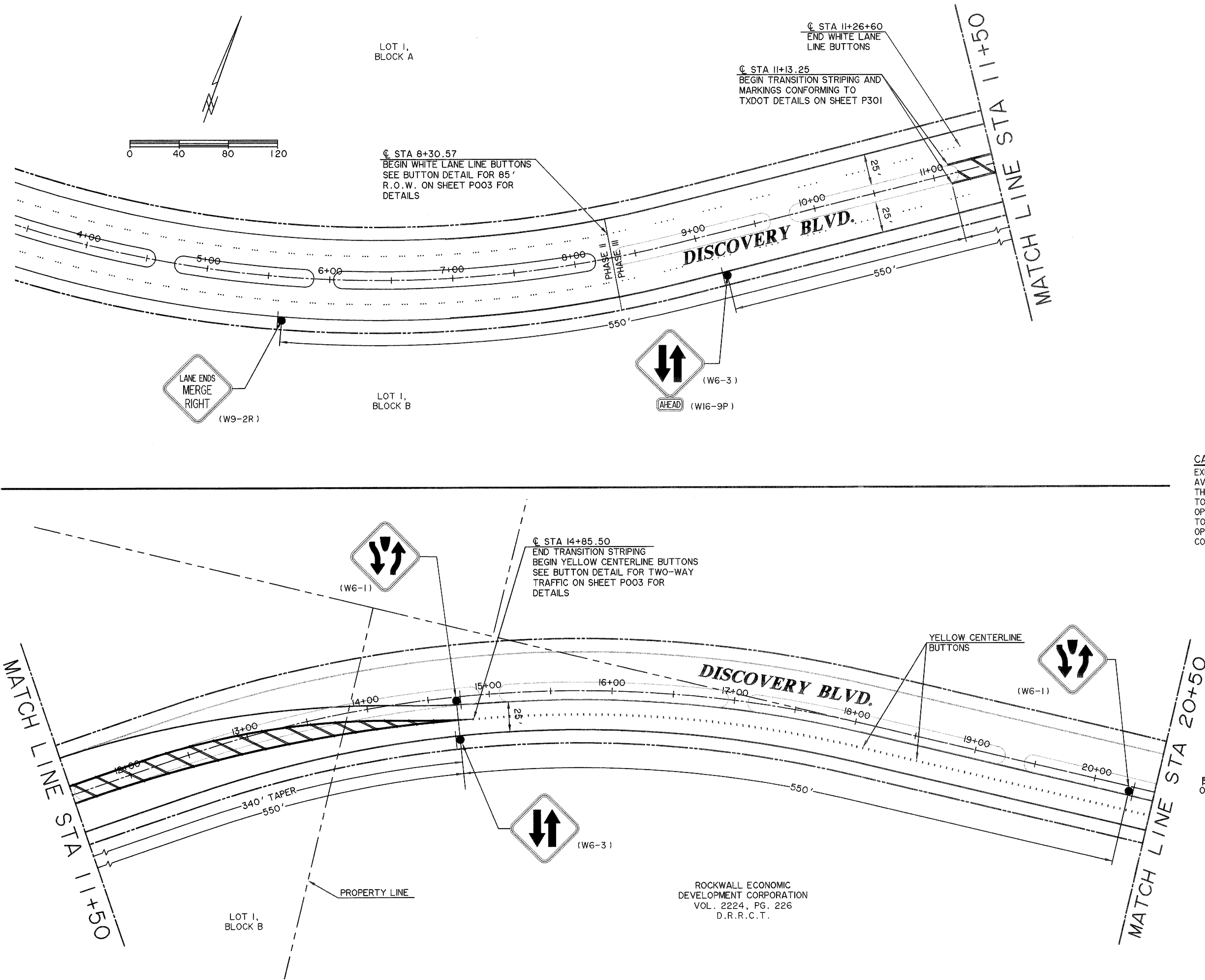


FILE: P201-Striping and Signage Plan Discovery Blvd.dwg

TIME: 8:47



\* BENCHMARKS \*

BM A - AN "X" CUT IN THE BACK OF CURB LOCATED AT THE SOUTH RIGHT-OF-WAY LINE OF SPRINGER ROAD ±2470' EAST OF THE INTERSECTION OF SPRINGER ROAD AND F.M. 549.	598.80 FT.
BM B - AN "X" CUT IN THE BACK OF CURB LOCATED AT THE NORTH RIGHT-OF-WAY LINE OF DISCOVERY BOULEVARD ±580' EAST OF THE INTERSECTION OF DISCOVERY BOULEVARD AND F.M. 549.	599.82 FT.
BM C - AN "□" CUT IN DISCOVERY BOULEVARD IN A MEDIAN NOSE ±60' WEST OF THE INTERSECTION OF DISCOVERY BOULEVARD AND F.M. 549.	598.20 FT.

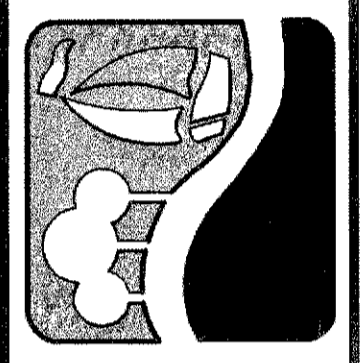
**CAUTION !!**  
 EXISTING UTILITIES ARE INDICATED ON THE PLANS FROM AVAILABLE INFORMATION. IT SHALL BE THE RESPONSIBILITY OF THE CONTRACTOR TO VERIFY THE LOCATION OF ALL UTILITIES, TO NOTIFY ALL UTILITY COMPANIES OF THE CONTRACTORS OPERATIONS, TO PROTECT ALL UTILITIES FROM DAMAGE, TO REPAIR ALL UTILITIES DAMAGED DUE TO THE CONTRACTORS OPERATIONS, AND TO NOTIFY THE ENGINEER PROMPTLY OF ALL CONFLICTS OF THE WORK WITH EXISTING UTILITIES.

ROCKWALL ECONOMIC  
 DEVELOPMENT CORPORATION  
 VOL. 2224, PG. 226  
 D.R.R.C.T.

**RECORD  
 DRAWING  
 4/07/2009**

TO THE BEST OF OUR KNOWLEDGE WIER & ASSOCIATES, INC., HERBY STATES THAT THIS PLAN IS AS-BUILT. THIS INFORMATION PROVIDED IS BASED ON SURVEYING AT THE SITE AND INFORMATION PROVIDED BY THE CONTRACTOR.

PREPARED BY:  
**WIER & ASSOCIATES, INC.**  
 ENGINEERS SURVEYORS LAND PLANNERS  
 701 HIGHLANDER BLVD., SUITE 300 ARLINGTON, TEXAS 76015 METRO (817)467-7700  
 6849 ELM STREET FRISCO, TEXAS 75034 METRO (214)397-8000  
 Texas State Registration No. 2776 www.wierassociates.com



**ROCKWALL  
 TECHNOLOGY  
 PARK  
 PHASE III**

**STRIPING AND  
 SIGNAGE PLAN FOR  
 DISCOVERY BLVD  
 TRANSITION**

RONALD RAMIREZ  
 81821  
 REGISTERED PROFESSIONAL ENGINEER  
 DATE: 04-07-2009  
 WA# 98041.04  
**SHEET NO.  
 P201**