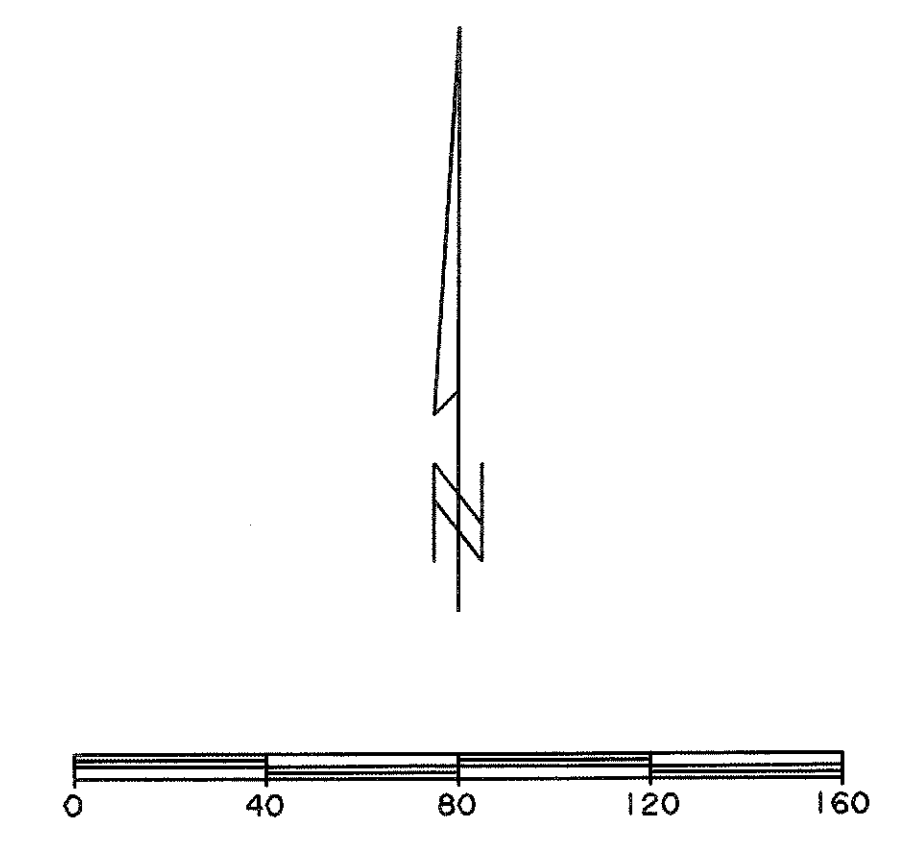
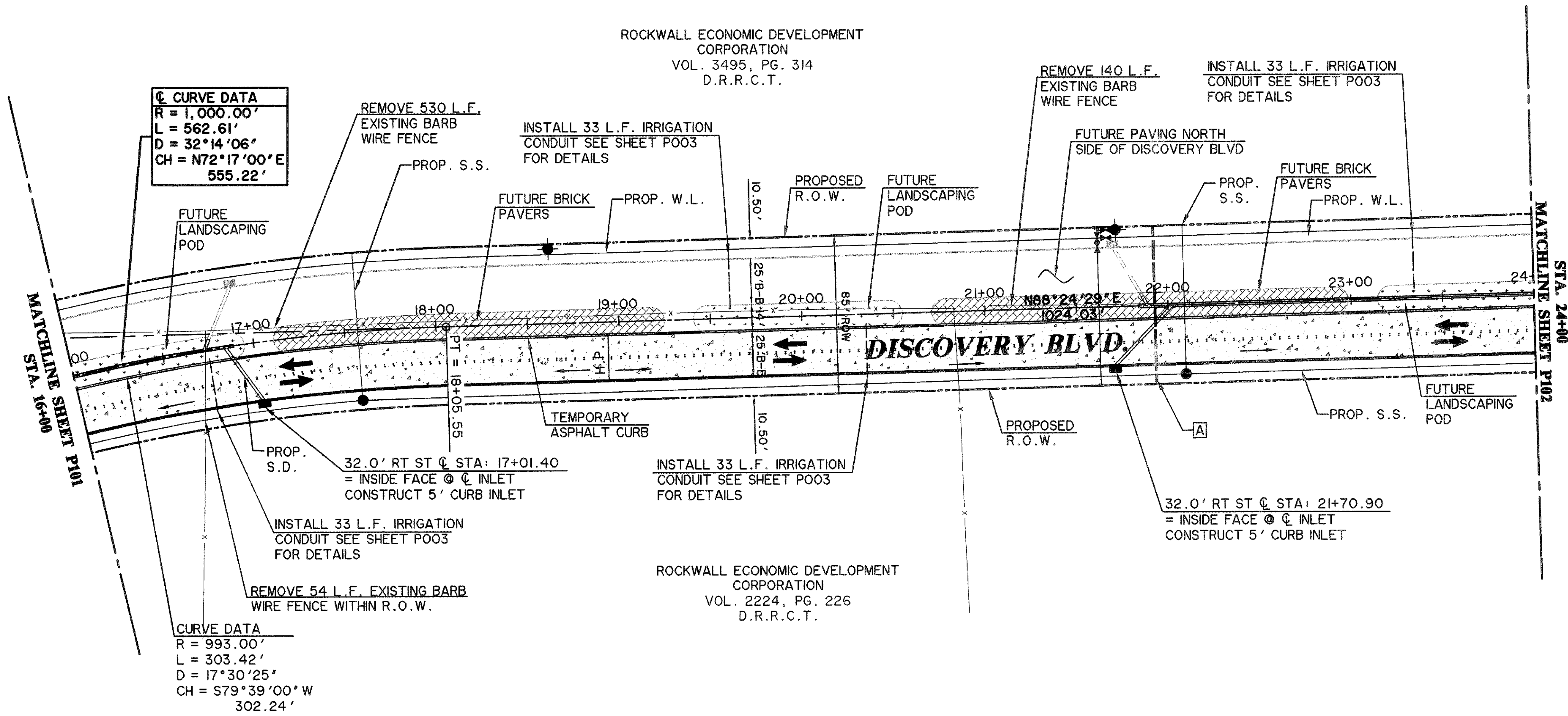


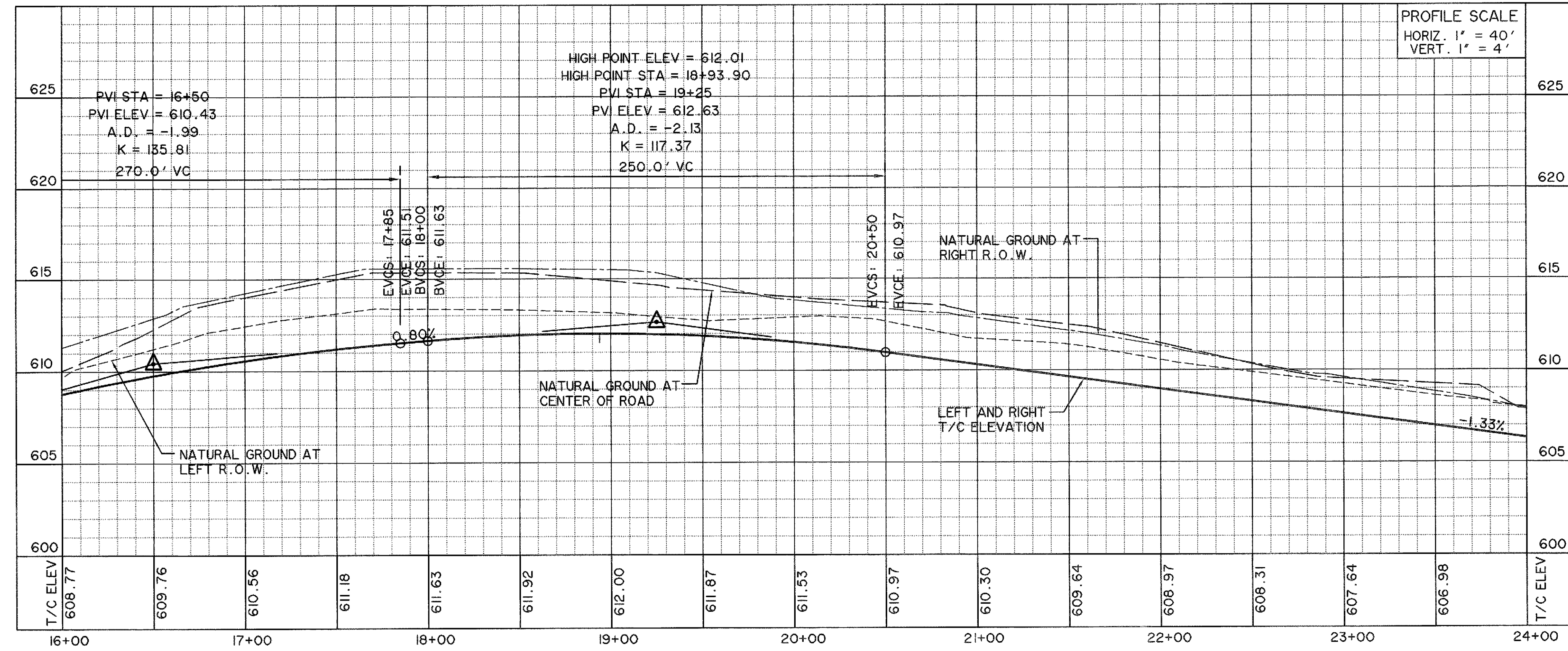
FILE: P102-Pav-Discovery-98041-4.dwg
TIME: 8.45



CAUTION !!
EXISTING UTILITIES ARE INDICATED ON THE PLANS FROM AVAILABLE INFORMATION. IT SHALL BE THE RESPONSIBILITY OF THE CONTRACTOR TO VERIFY THE LOCATION OF ALL UTILITIES, TO NOTIFY ALL UTILITY COMPANIES OF THE CONTRACTORS OPERATIONS, TO PROTECT ALL UTILITIES FROM DAMAGE, TO REPAIR ALL UTILITIES DAMAGED DUE TO THE CONTRACTORS OPERATIONS, AND TO NOTIFY THE ENGINEER PROMPTLY OF ALL CONFLICTS OF THE WORK WITH EXISTING UTILITIES.

A INSTALL 2-6' GRAY SCHEDULE 40 P.V.C. CONDUITS

NOTE:
SEE SHEET P201 AND P202 FOR STRIPING AND SIGNING LAYOUT FOR DISCOVERY BLVD



RECORD DRAWING
4/07/2009
TO THE BEST OF OUR KNOWLEDGE WIER & ASSOCIATES, INC., HEREBY STATES THAT THIS PLAN IS AS-BUILT. THIS INFORMATION PROVIDED IS BASED ON SURVEYING AT THE SITE AND INFORMATION PROVIDED BY THE CONTRACTOR.

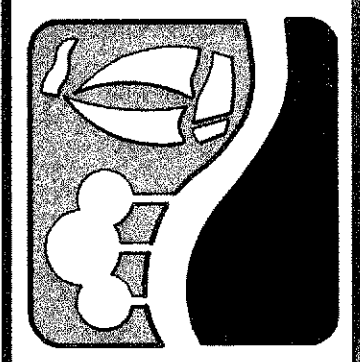
*** BENCH MARKS ***

BM A AN "X" CUT IN THE BACK OF CURB LOCATED AT THE SOUTH RIGHT-OF-WAY LINE OF SPRINGER ROAD ±2470' EAST OF THE INTERSECTION OF SPRINGER ROAD AND F.M. 549. 598.80 FT.

BM B AN "X" CUT IN THE BACK OF CURB LOCATED AT THE NORTH RIGHT-OF-WAY LINE OF DISCOVERY BOULEVARD ±580' EAST OF THE INTERSECTION OF DISCOVERY BOULEVARD AND F.M. 549. 599.82 FT.

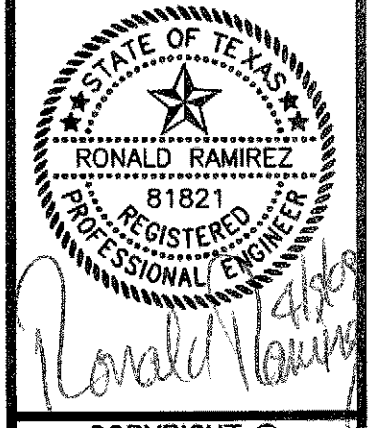
BM C - AN "□" CUT IN DISCOVERY BOULEVARD IN A MEDIAN NOSE ±60' WEST OF THE INTERSECTION OF DISCOVERY BOULEVARD AND F.M. 549. 598.20 FT.

PREPARED BY:
WIER & ASSOCIATES, INC.
ENGINEERS SURVEYORS LAND PLANNERS
701 HIGHLANDER BLVD., SUITE 300 ARLINGTON, TEXAS 76015 METRO (817)467-7700
6849 ELM STREET FRISCO, TEXAS 75034 METRO (214)397-8000
Texas State Registration No. 2776 www.wierassociates.com



ROCKWALL TECHNOLOGY PARK PHASE III

DISCOVERY BLVD. PAVING PLAN AND PROFILE STA 16+00 TO STA 24+00



COPYRIGHT © WIER & ASSOCIATES, INC.
LAST SHEET EDIT DATE 04-07-2009
W/A# 98041.04
SHEET NO. P102