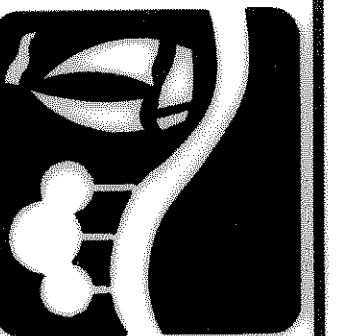


CAUTION !!!
UNDERGROUND UTILITIES

EXISTING UTILITIES AND UNDERGROUND FACILITIES INDICATED ON THESE PLANS HAVE BEEN LOCATED FROM REFERENCE INFORMATION SUPPLIED BY VARIOUS OWNERS OF THE FACILITIES. THE ENGINEER DOES NOT ACCEPT THE RESPONSIBILITY FOR THE UTILITY LOCATIONS SHOWN, IT SHALL BE THE RESPONSIBILITY OF THE CONTRACTOR TO VERIFY BOTH HORIZONTALLY AND VERTICALLY THE LOCATION OF ALL EXISTING UTILITIES AND UNDERGROUND FACILITIES PRIOR TO CONSTRUCTION, TO TAKE NECESSARY PRECAUTIONS IN ORDER TO PROTECT ALL FACILITIES ENCOUNTERED, AND TO NOTIFY THE ENGINEER PROMPTLY OF ALL CONFLICTS OF THE WORK WITH EXISTING FACILITIES. THE CONTRACTOR SHALL PRESERVE AND PROTECT ALL EXISTING UTILITIES FROM DAMAGE DURING CONSTRUCTION. ANY DAMAGE BY THE CONTRACTOR TO EXISTING UTILITIES SHALL BE REPAIRED BY THE CONTRACTOR AT HIS EXPENSE. CONTACT ALL POSSIBLE UTILITY AND UNDERGROUND FACILITY OWNERS.

PREPARED BY:
VIA WIER & ASSOCIATES, INC.
ENGINEERS SURVEYORS LAND PLANNERS
4300 BELWAY PLACE, SUITE 130 ARLINGTON, TEXAS 76010 METRO (817)467-7700
1380 U.S. HIGHWAY 287 N. SUITE 101 WAXSWORTH, TEXAS 76063 METRO (817)477-9700
6849 ELM STREET FRISCO, TEXAS 75034 METRO (214)987-8000
www.viawier.com



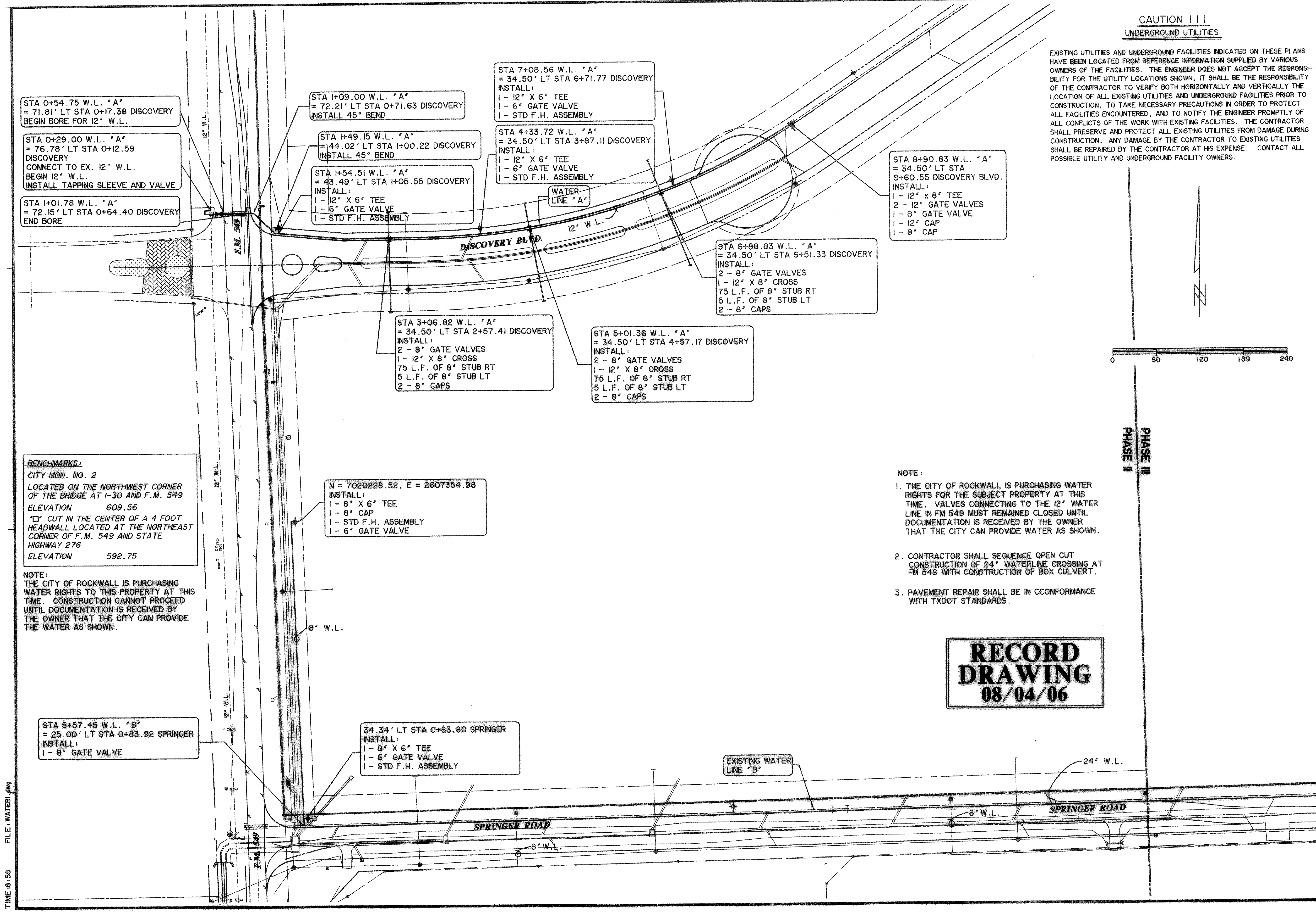
ROCKWALL TECHNOLOGY PARK PHASE II

WATER LAYOUT



COPYRIGHT ©
WIER & ASSOCIATES, INC.
LAST SHEET EDIT
DATE 08-16-2006
WA# 98041

SHEET NO. U101



STA 0+54.75 W.L. "A"
= 71.81' LT STA 0+17.38 DISCOVERY
BEGIN BORE FOR 12" W.L.

STA 0+29.00 W.L. "A"
= 76.78' LT STA 0+12.59
DISCOVERY
CONNECT TO EX. 12" W.L.
BEGIN 12" W.L.
INSTALL TAPPING SLEEVE AND VALVE

STA 1+01.78 W.L. "A"
= 72.15' LT STA 0+64.40 DISCOVERY
END BORE

STA 1+09.00 W.L. "A"
= 72.21' LT STA 0+71.63 DISCOVERY
INSTALL 45° BEND

STA 1+49.15 W.L. "A"
= 44.02' LT STA 1+00.22 DISCOVERY
INSTALL 45° BEND

STA 1+54.51 W.L. "A"
= 43.49' LT STA 1+05.55 DISCOVERY
INSTALL:
1 - 12" X 6" TEE
1 - 6" GATE VALVE
1 - STD F.H. ASSEMBLY

STA 7+08.56 W.L. "A"
= 34.50' LT STA 6+71.77 DISCOVERY
INSTALL:
1 - 12" X 6" TEE
1 - 6" GATE VALVE
1 - STD F.H. ASSEMBLY

STA 4+33.72 W.L. "A"
= 34.50' LT STA 3+87.11 DISCOVERY
INSTALL:
1 - 12" X 6" TEE
1 - 6" GATE VALVE
1 - STD F.H. ASSEMBLY

STA 8+90.83 W.L. "A"
= 34.50' LT STA
8+60.55 DISCOVERY BLVD.
INSTALL:
1 - 12" X 8" TEE
2 - 12" GATE VALVES
1 - 8" GATE VALVE
1 - 12" CAP
1 - 8" CAP

STA 6+88.83 W.L. "A"
= 34.50' LT STA 6+51.33 DISCOVERY
INSTALL:
2 - 8" GATE VALVES
1 - 12" X 8" CROSS
75 L.F. OF 8" STUB RT
5 L.F. OF 8" STUB LT
2 - 8" CAPS

STA 3+06.82 W.L. "A"
= 34.50' LT STA 2+57.41 DISCOVERY
INSTALL:
2 - 8" GATE VALVES
1 - 12" X 8" CROSS
75 L.F. OF 8" STUB RT
5 L.F. OF 8" STUB LT
2 - 8" CAPS

STA 5+01.36 W.L. "A"
= 34.50' LT STA 4+57.17 DISCOVERY
INSTALL:
2 - 8" GATE VALVES
1 - 12" X 8" CROSS
75 L.F. OF 8" STUB RT
5 L.F. OF 8" STUB LT
2 - 8" CAPS

N = 7020228.52, E = 2607354.98
INSTALL:
1 - 8" X 6" TEE
1 - 8" CAP
1 - STD F.H. ASSEMBLY
1 - 6" GATE VALVE

BENCHMARKS:
CITY MON. NO. 2
LOCATED ON THE NORTHWEST CORNER
OF THE BRIDGE AT I-30 AND F.M. 549
ELEVATION 609.56
"□" CUT IN THE CENTER OF A 4 FOOT
HEADWALL LOCATED AT THE NORTHEAST
CORNER OF F.M. 549 AND STATE
HIGHWAY 276
ELEVATION 592.75

NOTE:
THE CITY OF ROCKWALL IS PURCHASING
WATER RIGHTS TO THIS PROPERTY AT THIS
TIME. CONSTRUCTION CANNOT PROCEED
UNTIL DOCUMENTATION IS RECEIVED BY
THE OWNER THAT THE CITY CAN PROVIDE
THE WATER AS SHOWN.

- NOTE:**
1. THE CITY OF ROCKWALL IS PURCHASING WATER RIGHTS FOR THE SUBJECT PROPERTY AT THIS TIME. VALVES CONNECTING TO THE 12" WATER LINE IN FM 549 MUST REMAINED CLOSED UNTIL DOCUMENTATION IS RECEIVED BY THE OWNER THAT THE CITY CAN PROVIDE WATER AS SHOWN.
 2. CONTRACTOR SHALL SEQUENCE OPEN CUT CONSTRUCTION OF 24" WATERLINE CROSSING AT FM 549 WITH CONSTRUCTION OF BOX CULVERT.
 3. PAVEMENT REPAIR SHALL BE IN CONFORMANCE WITH TXDOT STANDARDS.

**RECORD
DRAWING
08/04/06**

TIME 18:59 FILE: WATER1.dwg