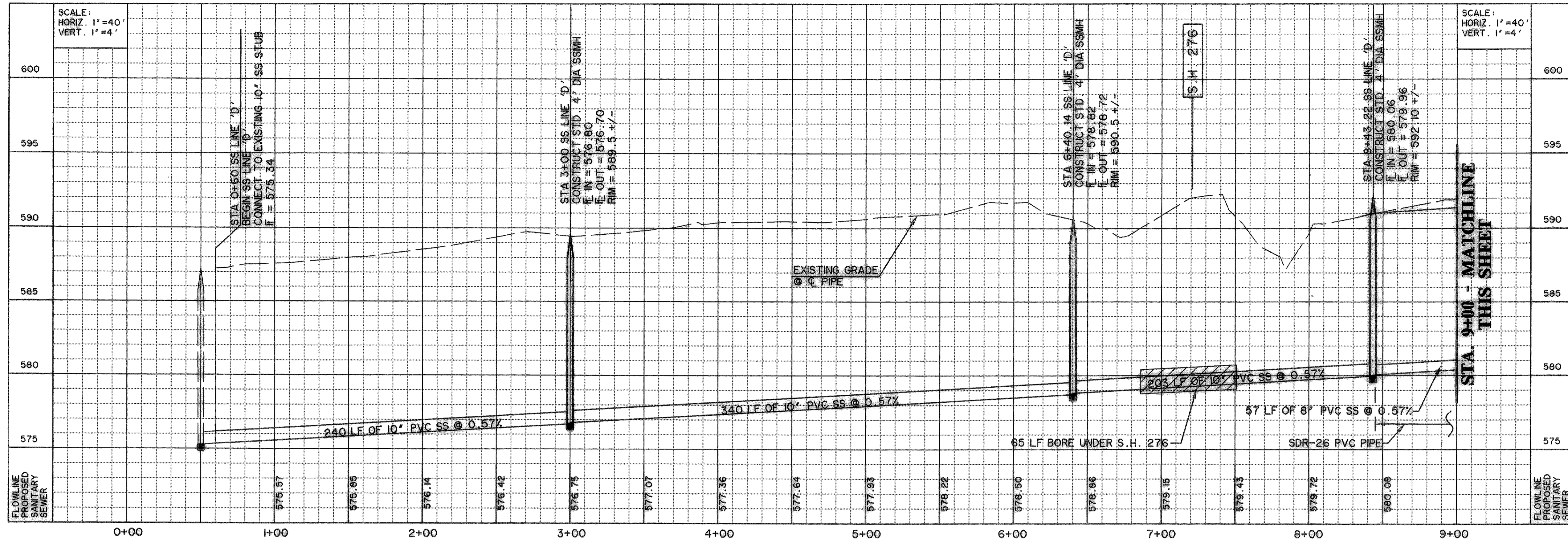
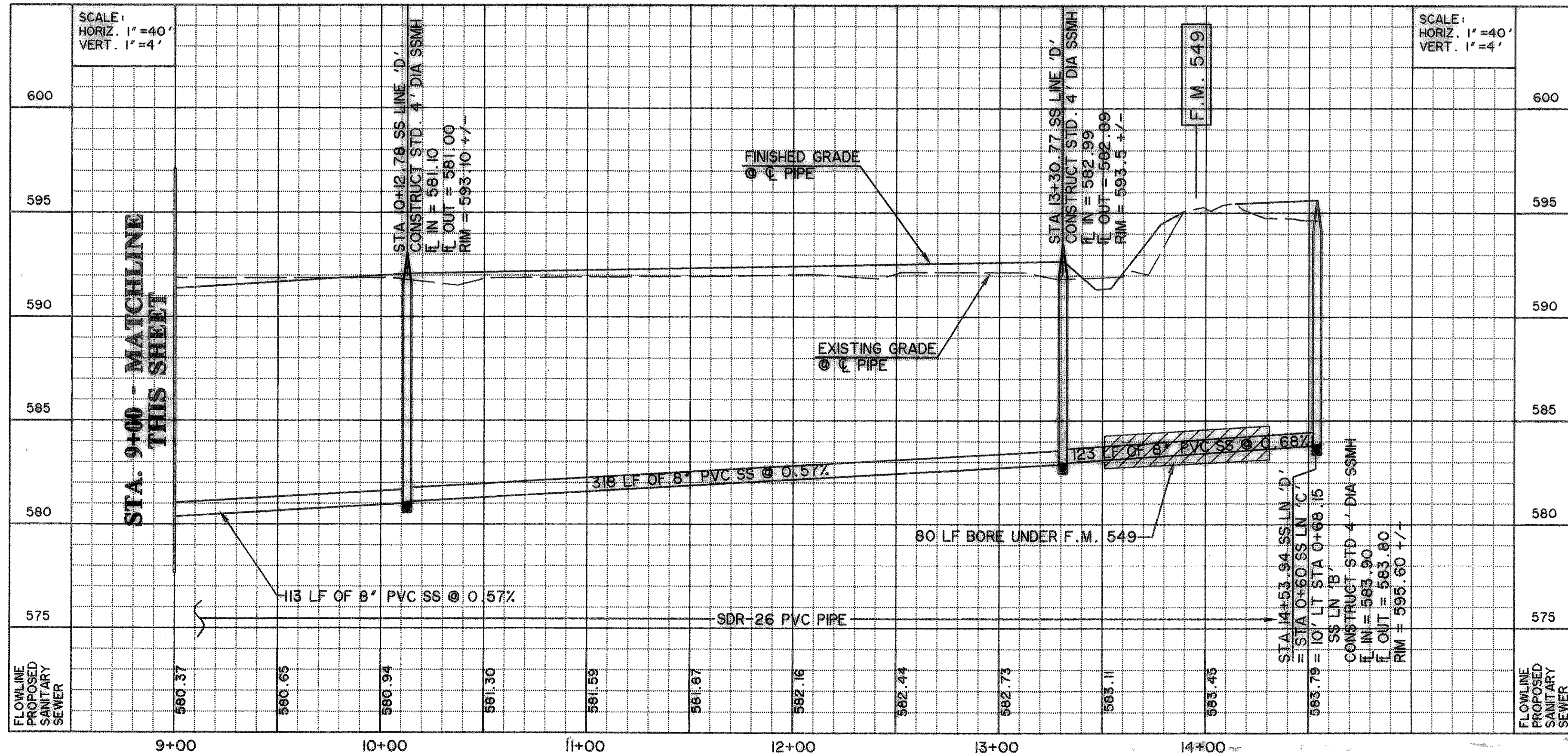


SS LINE 'D' - STA. 0+50 TO 9+00



SS LINE 'D' - STA 9+00 TO END

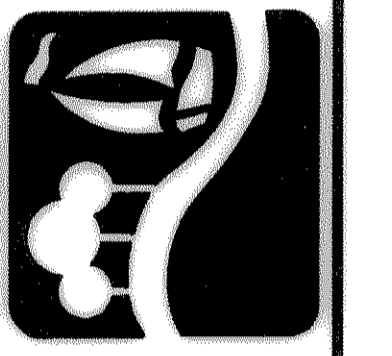


**RECORD  
DRAWING  
08/04/06**

NOTE:  
WHERE NO GRADING IS TO BE PERFORMED,  
MATCH RIM ELEVATIONS TO EXISTING  
GRADE. RIM ELEVATIONS SHOWN ARE  
APPROXIMATE.

**BENCHMARKS:**  
CITY MON. NO. 2  
LOCATED ON THE NORTHWEST CORNER  
OF THE BRIDGE AT I-30 AND F.M. 549  
ELEVATION 609.56  
"C" CUT IN THE CENTER OF A 4 FOOT  
HEADWALL LOCATED AT THE NORTHEAST  
CORNER OF F.M. 549 AND STATE  
HIGHWAY 276  
ELEVATION 592.75

PREPARED BY:  
**WIA WIER & ASSOCIATES, INC.**  
ENGINEERS SURVEYORS LAND PLANNERS  
4300 BELWAY PLACE SUITE 130 ARLINGTON, TEXAS 76018 METRO (817)467-7700  
1380 U.S. HIGHWAY 287 N. SUITE 101 MANFRED, TEXAS 78063 METRO (817)477-8700  
6848 ELM STREET FRISCO, TEXAS 75034 METRO (214)397-8000  
www.wiaassociates.com



**ROCKWALL  
TECHNOLOGY  
PARK  
PHASE II**

**SANITARY  
SEWER  
PROFILES  
LINE "D"**

STATE OF TEXAS  
RONALD RAMIREZ  
81821  
REGISTERED  
PROFESSIONAL ENGINEER  
*Ronald Ramirez*  
COPYRIGHT ©  
WIER & ASSOCIATES, INC.  
LAST SHEET EDIT  
DATE 08-18-2006  
WA# 98041  
**SHEET NO.  
U106**