

CONNECT TO EXISTING ASPHALT PAVEMENT PER TXDOT DETAILS. SAWCUT AS NECESSARY.

VARIABLE WIDTH DRAINAGE, PEDESTRIAN, LANDSCAPE AND UTILITY EASEMENT

**LOT 1, BLOCK B
ROCKWALL TECHNOLOGY
PARK
PHASE II**

64' TRANSITION TO NO CURB
STA. 0+70.40
22.50' LT.
END LT. CURB RETURN

STA. 1+30.83 - 22.00' LT.
CONST. STD. 10' INLET 'C-10'
T/C = 597.01
FL = 591.36

STA. 4+23.48 - 22.00' LT.
CONST. STD. 10' INLET 'C-8'
T/C = 597.01
FL = 593.01

STA. 7+23.86 - 22.00' LT.
CONST. STD. 10' INLET 'C-6'
T/C = 599.12
FL = 595.12

MATCHLINE SHEET P103
STA. 10+00

REMOVE EXISTING ASPHALT PAVEMENT

REMOVE AND REPLACE EXISTING ASPHALT DRIVE

REMOVE EXISTING HEADWALL AND CULVERT

REPAIR EXIST. ASPHALT ROAD PER TXDOT DETAILS SEE STORM DRAIN SHEETS

INSTALL TRAFFIC BUTTONS PER MUTCD GUIDELINES

TEMPORARY ROLLED ASPHALT CURB THIS SIDE. SEE DETAIL SHEET 5

NOTE:

CONTRACTOR SHALL SUBMIT A TRAFFIC CONTROL PLAN FOR CONSTRUCTION OF SPRINGER ROAD AND FM 549 2 WEEKS PRIOR TO START OF CONSTRUCTION. TRAFFIC CONTROL PLANS SHALL BE IN CONFORMANCE WITH THE LATEST EDITION OF THE MUTCD.

PT.	ELEV.	DESC.
A	594.87	TP
B	595.05	TP
C	595.23	TP
D	595.36	EAP
E	595.42	EAP
F	595.63	TP
G	595.54	TP
H	595.46	TP
I	595.37	TP

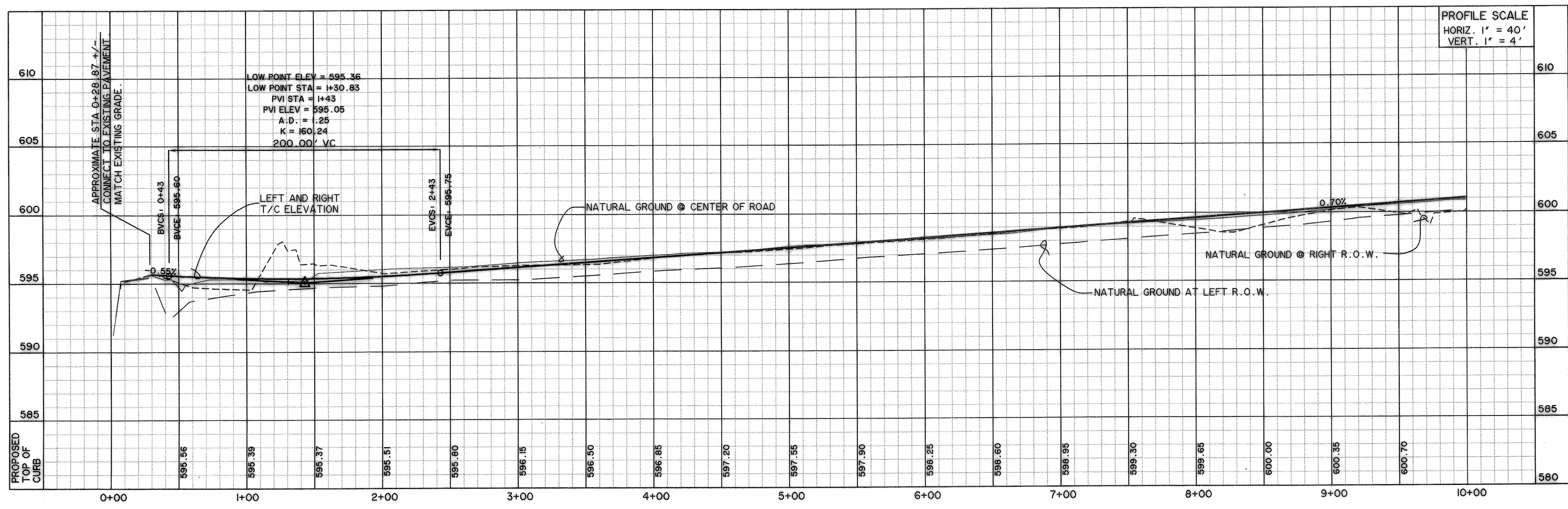
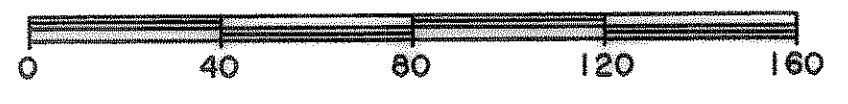
**RECORD
DRAWING
08/04/06**

LEGEND

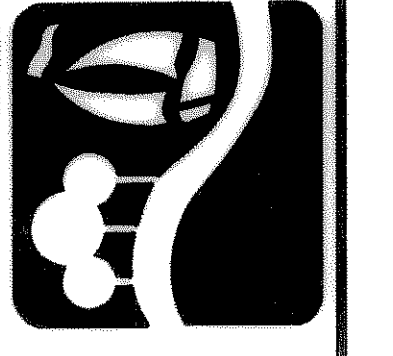
- * 4000 PSI. CONC. PAVING
- TEMPORARY NON-REINF. CONCRETE
- BRICK PAVING
- LANDSCAPING
- DIRECTION OF FLOW

* NOTE: MIN 6 SACK FOR MACHINE POUR AND 6.5 SACK FOR HAND POUR.

BENCHMARKS:
CITY MON. NO. 2
LOCATED ON THE NORTHWEST CORNER OF THE BRIDGE AT I-30 AND F.M. 549
ELEVATION 609.56
"□" CUT IN THE CENTER OF A 4 FOOT HEADWALL LOCATED AT THE NORTHEAST CORNER OF F.M. 549 AND STATE HIGHWAY 276
ELEVATION 592.75

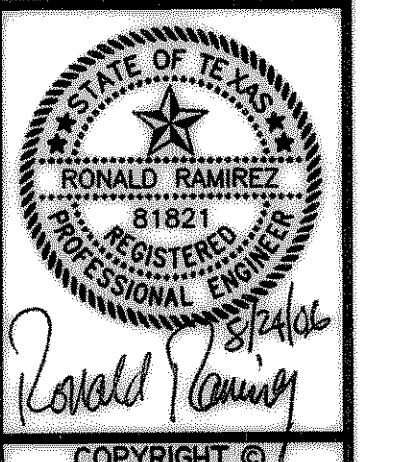


PREPARED BY:
WIER & ASSOCIATES, INC.
ENGINEERS SURVEYORS LAND PLANNERS
4300 BELWAY PLACE SUITE 130 ARLINGTON, TEXAS 76018 METRO (817)467-7700
1380 U.S. HIGHWAY 287 N. SUITE 101 WANSFORD, TEXAS 76763 METRO (817)477-8700
6848 ELM STREET FRODO, TEXAS 75034 METRO (214)387-8000
www.wierassociates.com



**ROCKWALL
TECHNOLOGY
PARK
PHASE II**

**PAVING PLAN
AND PROFILE
SPRINGER ROAD
STA. 0+00 TO 10+00**



COPYRIGHT ©
WIER & ASSOCIATES, INC.
LAST SHEET EDIT
DATE 08-18-2006
WA# 98041

**SHEET NO.
P102**

TIME 18:53 FILE: PAVING2.dwg