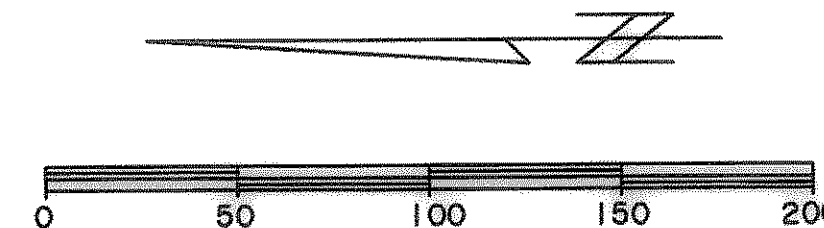
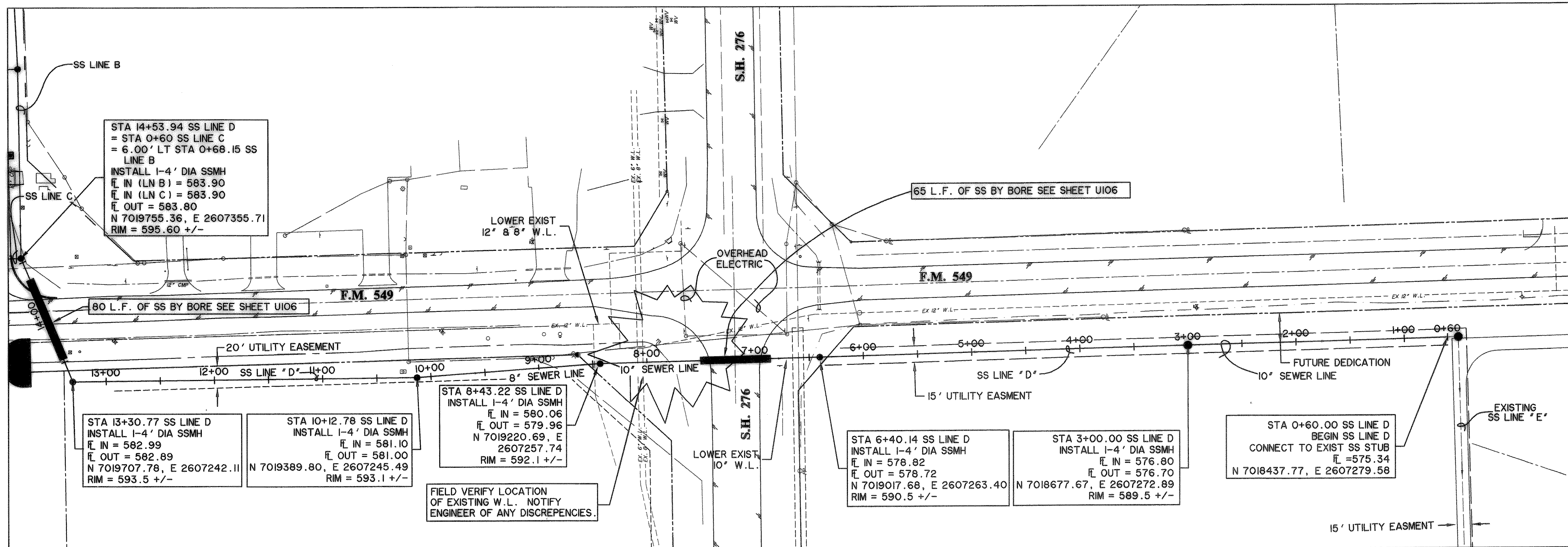


CAUTION !!!
UNDERGROUND UTILITIES



EXISTING UTILITIES AND UNDERGROUND FACILITIES INDICATED ON THESE PLANS HAVE BEEN LOCATED FROM REFERENCE INFORMATION SUPPLIED BY VARIOUS OWNERS OF THE FACILITIES. THE ENGINEER DOES NOT ACCEPT THE RESPONSIBILITY FOR THE UTILITY LOCATIONS SHOWN. IT SHALL BE THE RESPONSIBILITY OF THE CONTRACTOR TO VERIFY BOTH HORIZONTALLY AND VERTICALLY THE LOCATION OF ALL EXISTING UTILITIES AND UNDERGROUND FACILITIES PRIOR TO CONSTRUCTION, TO TAKE NECESSARY PRECAUTIONS IN ORDER TO PROTECT ALL FACILITIES ENCOUNTERED, AND TO NOTIFY THE ENGINEER PROMPTLY OF ALL CONFLICTS OF THE WORK WITH EXISTING FACILITIES. THE CONTRACTOR SHALL PRESERVE AND PROTECT ALL EXISTING UTILITIES FROM DAMAGE DURING CONSTRUCTION. ANY DAMAGE BY THE CONTRACTOR TO EXISTING UTILITIES SHALL BE REPAIRED BY THE CONTRACTOR AT HIS EXPENSE. CONTACT ALL POSSIBLE UTILITY AND UNDERGROUND FACILITY OWNERS.



STA 14+53.94 SS LINE D
= STA 0+60 SS LINE C
= 6.00' LT STA 0+68.15 SS
LINE B
INSTALL 1-4' DIA SSMH
ℓ IN (LN B) = 583.90
ℓ IN (LN C) = 583.90
ℓ OUT = 583.80
N 7019755.36, E 2607355.71
RIM = 595.60 +/-

STA 13+30.77 SS LINE D
INSTALL 1-4' DIA SSMH
ℓ IN = 582.99
ℓ OUT = 582.89
N 7019707.78, E 2607242.11
RIM = 593.5 +/-

STA 10+12.78 SS LINE D
INSTALL 1-4' DIA SSMH
ℓ IN = 581.10
ℓ OUT = 581.00
N 7019389.80, E 2607245.49
RIM = 593.1 +/-

STA 8+43.22 SS LINE D
INSTALL 1-4' DIA SSMH
ℓ IN = 580.06
ℓ OUT = 579.96
N 7019220.69, E
2607257.74
RIM = 592.1 +/-

FIELD VERIFY LOCATION
OF EXISTING W.L. NOTIFY
ENGINEER OF ANY DISCREPANCIES.

STA 6+40.14 SS LINE D
INSTALL 1-4' DIA SSMH
ℓ IN = 578.82
ℓ OUT = 578.72
N 7019017.68, E 2607263.40
RIM = 590.5 +/-

STA 3+00.00 SS LINE D
INSTALL 1-4' DIA SSMH
ℓ IN = 576.80
ℓ OUT = 576.70
N 7018677.67, E 2607272.89
RIM = 589.5 +/-

STA 0+60.00 SS LINE D
BEGIN SS LINE D
CONNECT TO EXIST SS STUB
ℓ = 575.34
N 7018437.77, E 2607279.58

**RECORD
DRAWING**
08/04/06

NOTE:
TREES TO BE REMOVED SHALL BE
FLAGGED AND APPROVED BY THE CITY
PRIOR TO CONSTRUCTION.

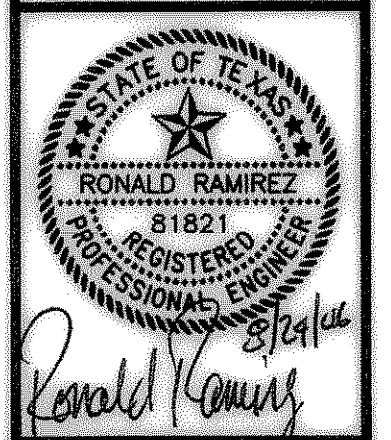
BENCHMARKS:
CITY MON. NO. 2
LOCATED ON THE NORTHWEST CORNER
OF THE BRIDGE AT I-30 AND F.M. 549
ELEVATION 609.56
"C" CUT IN THE CENTER OF A 4 FOOT
HEADWALL LOCATED AT THE NORTHEAST
CORNER OF F.M. 549 AND STATE
HIGHWAY 276
ELEVATION 592.75

PREPARED BY:
WIA WIER & ASSOCIATES, INC.
ENGINEERS SURVEYORS LAND PLANNERS
4300 BELTWAY PLACE SUITE 120 ARLINGTON, TEXAS 76018 METRO (817)467-7700
1380 U.S. HIGHWAY 287 N. SUITE 101 WANSFELD, TEXAS 76063 METRO (817)471-8700
6848 ELM STREET FRSOO, TEXAS 75034 METRO (214)387-8000
www.WierAssociates.com



**ROCKWALL
TECHNOLOGY
PARK
PHASE II**

**SANITARY SEWER
LAYOUT
LINE "D"**



COPYRIGHT ©
WIER & ASSOCIATES, INC.
LAST SHEET EDIT
DATE 08-16-2006
WA# 98041

**SHEET NO.
U103**