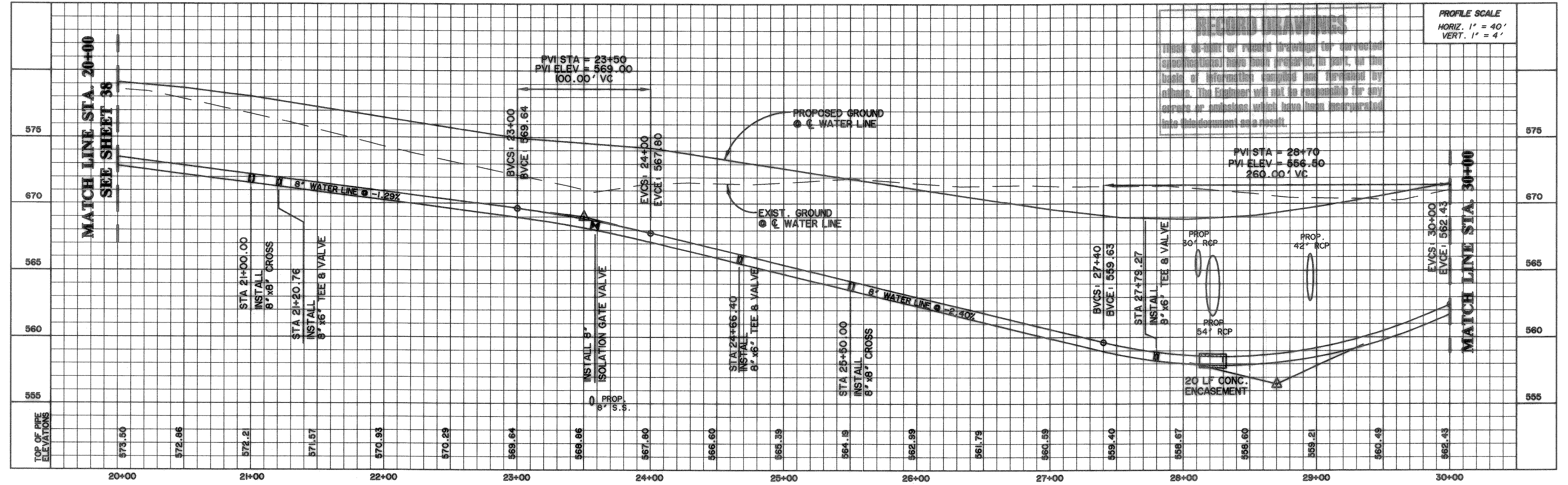
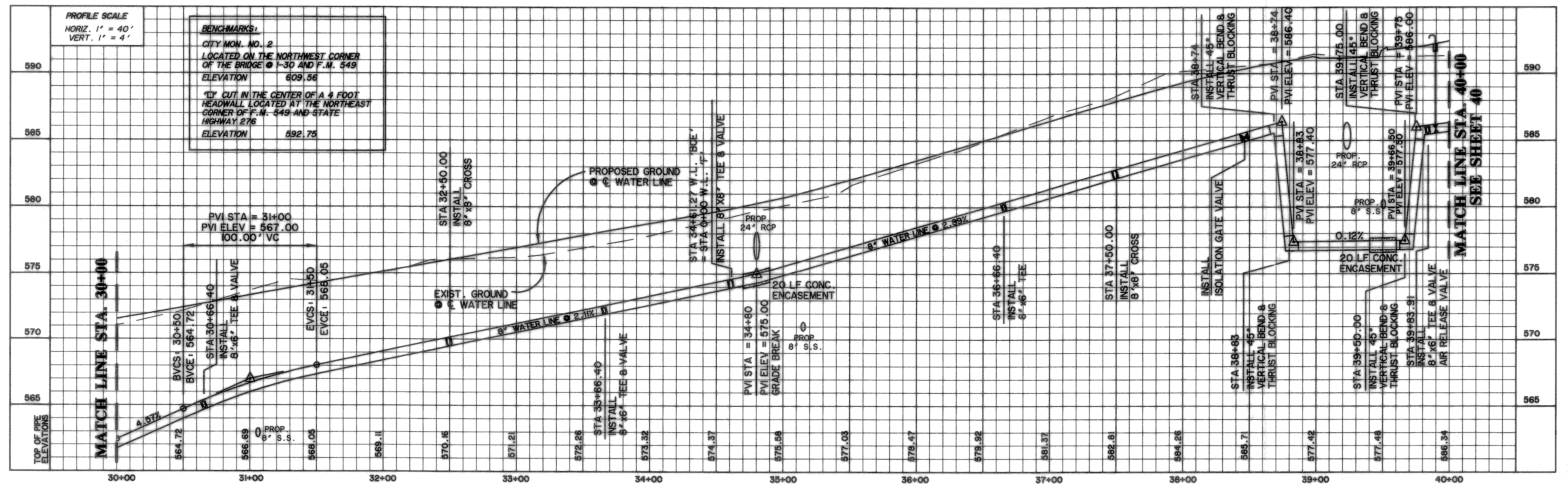


TIME: 11:11 FILE: WATERA4.dwg



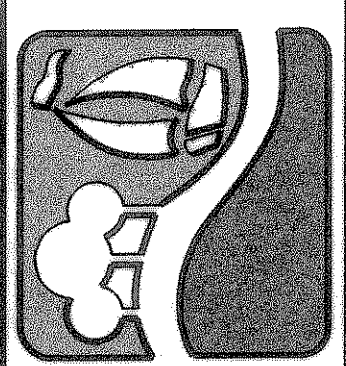
WATER LINE 'BCE'

NOTE: INSTALL CONCRETE THRUST BLOCKING
 @ ALL BENDS PER CITY STANDARDS.



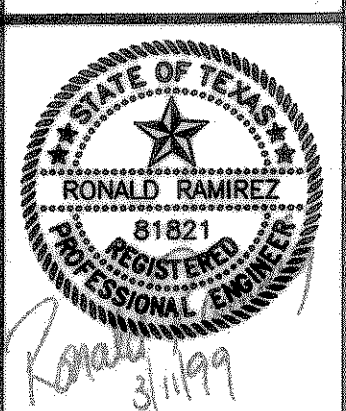
BENCHMARKS:
 CITY MON. NO. 2
 LOCATED ON THE NORTHWEST CORNER
 OF THE BRIDGE @ I-30 AND F.M. 549
 ELEVATION 609.56
 KEY CUT IN THE CENTER OF A 4 FOOT
 HEADWALL LOCATED AT THE NORTHEAST
 CORNER OF F.M. 549 AND STATE
 HIGHWAY 276
 ELEVATION 692.75

PREPARED BY:
VIA WIER & ASSOCIATES, INC.
 ENGINEERS SURVEYORS LAND PLANNERS
 4300 BELLEVUE PLACE SUITE 130 ARLINGTON, TEXAS 76016 METRO (817)467-7700
 4100 AMAR CENTER BLVD. SUITE 200 FORT WORTH, TEXAS 76155 METRO (817)355-8457



**ROCKWALL
 TECHNOLOGY
 PARK**

**WATER LINE 'BCE'
 PROFILES
 STA. 20+00 TO STA. 40+00**



COPYRIGHT ©
 WIER & ASSOCIATES, INC.
 LAST SHEET EDIT
 DATE 08-03-99
 WAH 98041
**SHEET NO.
 39**