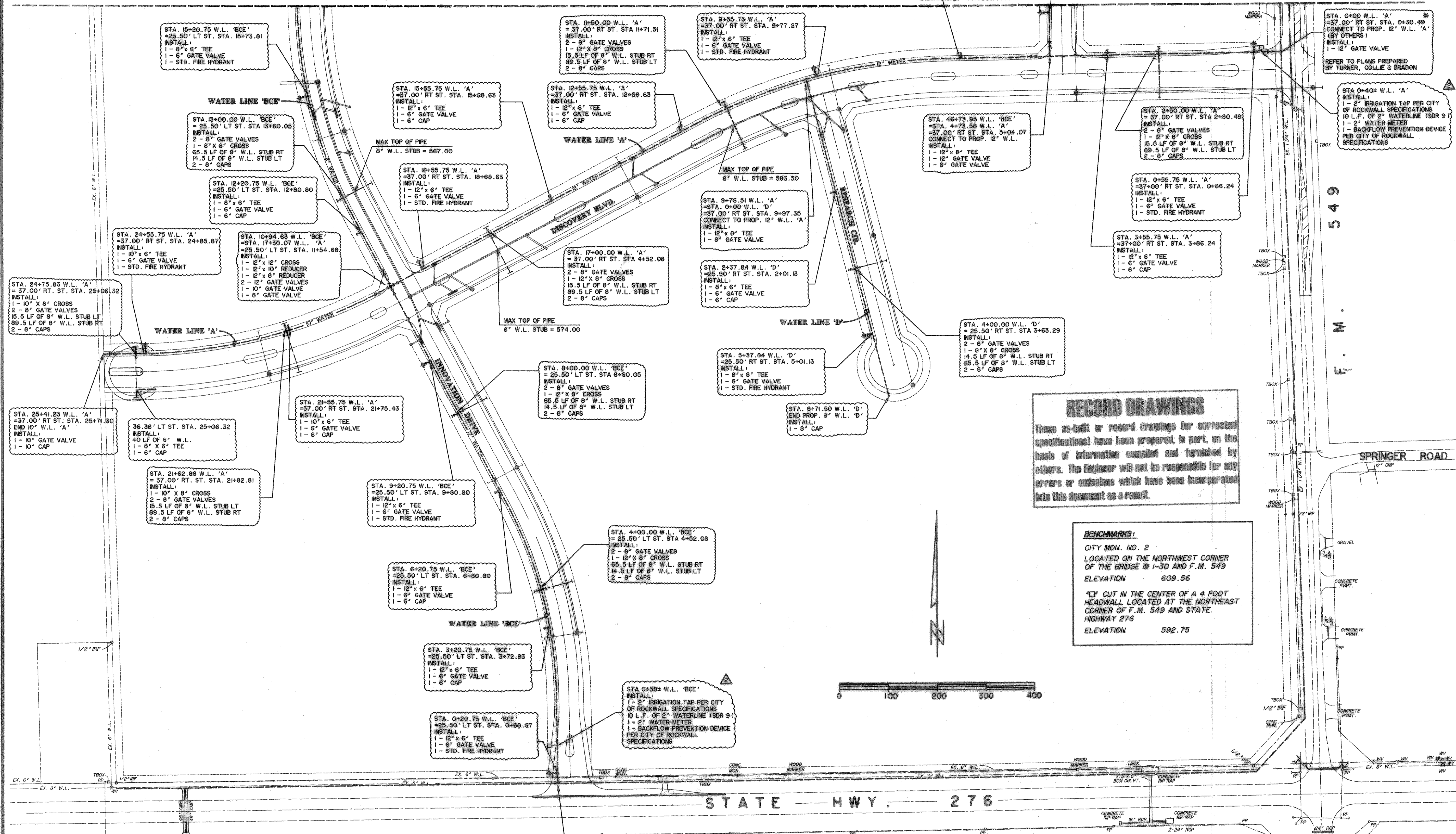


MATCH LINE - SEE SHEET NO. 29-B



**RECORD DRAWINGS**  
 These as-built or record drawings (for corrected specifications) have been prepared, in part, on the basis of information compiled and furnished by others. The Engineer will not be responsible for any errors or omissions which have been incorporated into this document as a result.

**BENCHMARKS:**  
 CITY MON. NO. 2  
 LOCATED ON THE NORTHWEST CORNER OF THE BRIDGE @ I-30 AND F.M. 549  
 ELEVATION 609.56  
 CUT IN THE CENTER OF A 4 FOOT HEADWALL LOCATED AT THE NORTHEAST CORNER OF F.M. 549 AND STATE HIGHWAY 276  
 ELEVATION 592.75

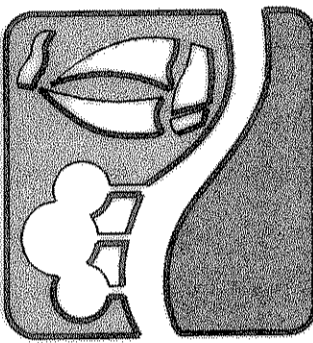
STA 0+00 W.L. 'BCE' \*  
 = 6' EXIST 12" W.L.  
 INSTALL:  
 1 - 12" GATE VALVE  
 REFER TO PLANS PREPARED BY TURNER, COLLIE & BRADON

NOTE: THE CONTRACTOR SHALL COORDINATE WITH THE CITY INSPECTOR AT THE START OF THE PROJECT FOR THE PROPER LOCATION AND ELEVATION OF THE WATER LINE CONNECTIONS AT F.M. 549 AND S.H. 276. THE CONTRACTOR SHALL SUPPLY ALL NECESSARY OFFSETS, FITTINGS AND APPURTENANCES TO MAKE THE PROPER CONNECTION.

\* SEE SHEET 29-B FOR UTILITY NOTES

- ▲ ADDED 2 WATER LINE CROSSINGS AT WEST END OF DISCOVERY BLVD. 8/23/99
- ▲ ADDED 2 IRRIGATION SERVICES. 9/1/99

PREPARED BY:  
**WIER & ASSOCIATES, INC.**  
 ENGINEERS SURVEYORS LAND PLANNERS  
 4300 BELLEVUE PLACE, SUITE 130 ARLINGTON, TEXAS 76010 METRO (817) 467-7700  
 4100 AMAN CREEK ROAD, SUITE 200 FORT WORTH, TEXAS 76155 METRO (817) 355-9507



**ROCKWALL TECHNOLOGY PARK**

**WATER UTILITY PLAN**



COPYRIGHT © WIER & ASSOCIATES, INC.  
 LAST SHEET EDIT  
 DATE 08-24-99  
 WAR 98041

**SHEET NO. 29-A**

FILE: utl-a.dwg  
 TIME: 6:53