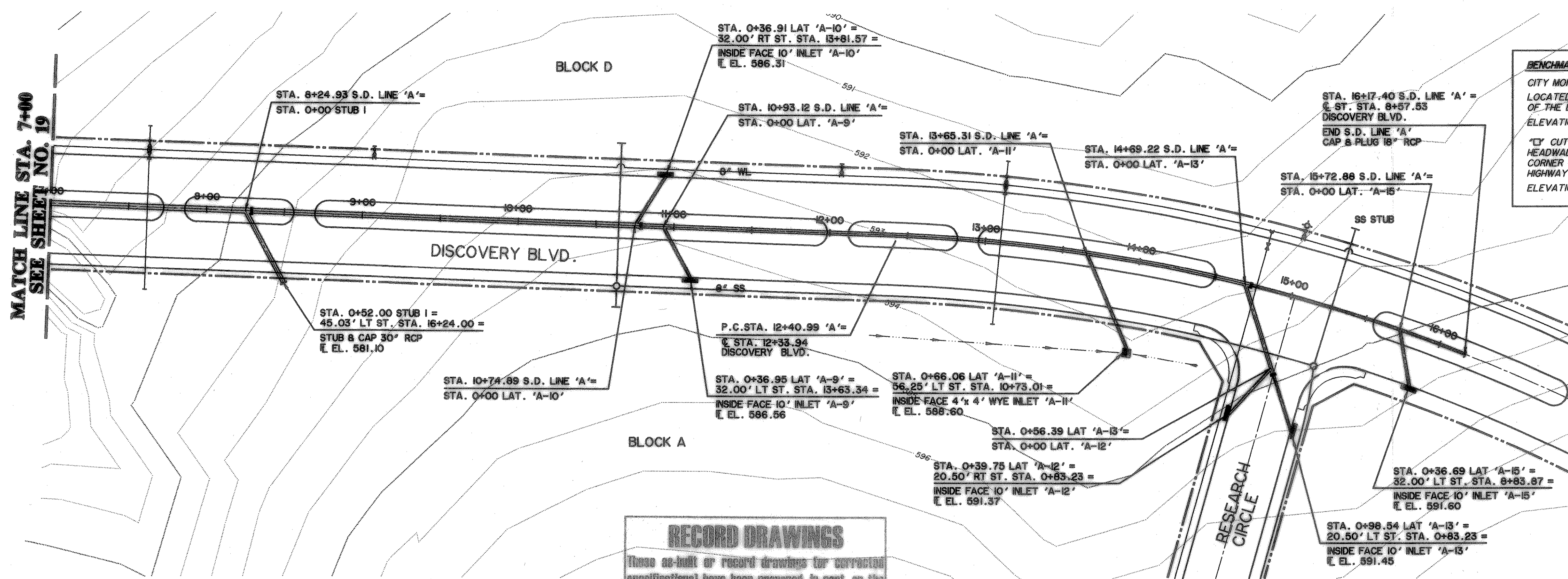
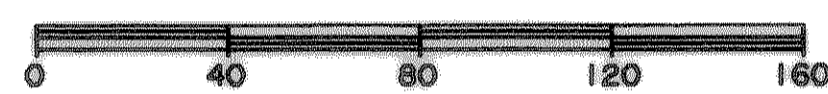


MATCH LINE STA. 7+00  
SEE SHEET NO. 19

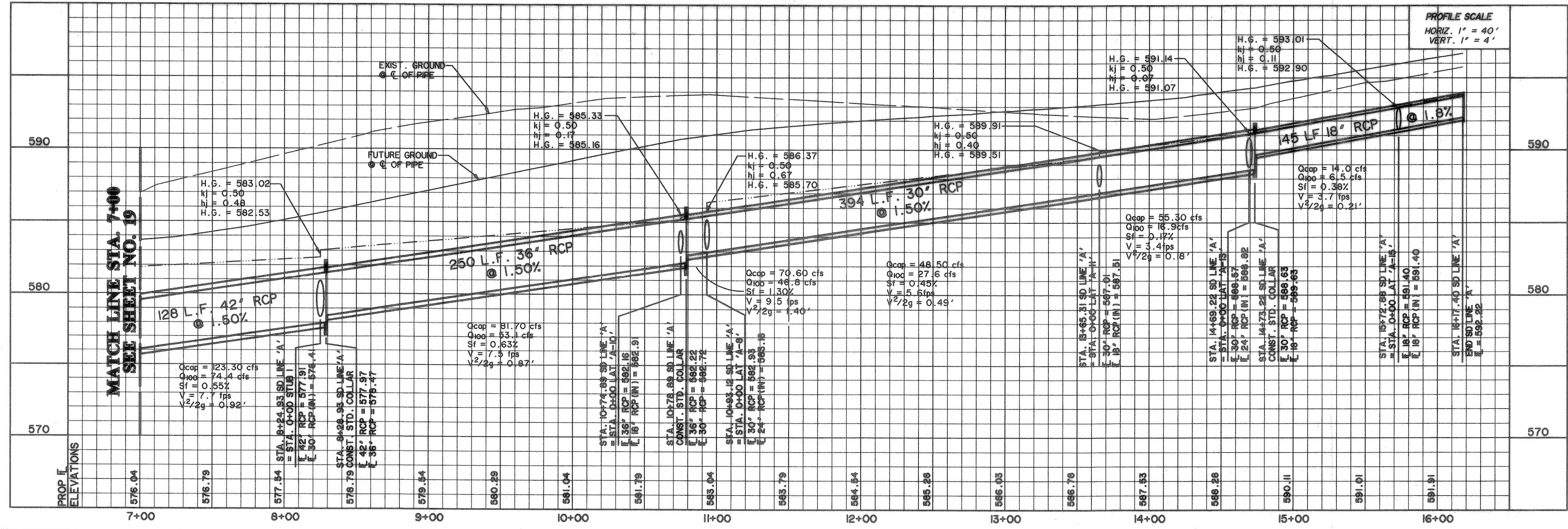


**BENCHMARKS:**  
CITY MON. NO. 2  
LOCATED ON THE NORTHWEST CORNER  
OF THE BRIDGE @ I-30 AND F.M. 549  
ELEVATION 609.56  
"C" CUT IN THE CENTER OF A 4 FOOT  
HEADWALL LOCATED AT THE NORTHEAST  
CORNER OF F.M. 549 AND STATE  
HIGHWAY 276  
ELEVATION 592.75

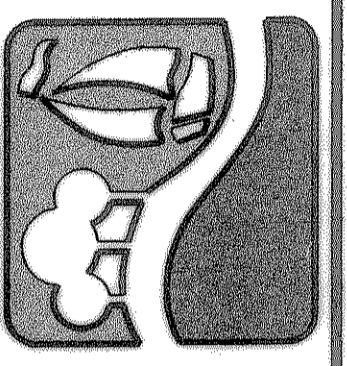
**RECORD DRAWINGS**  
These as-built or record drawings (or corrected specifications) have been prepared, in part, on the basis of information compiled and furnished by others. The Engineer will not be responsible for any errors or omissions which have been incorporated into this document as a result.



**STORM DRAIN LINE 'A'**



PREPARED BY:  
**WIA WIER & ASSOCIATES, INC.**  
ENGINEERS SURVEYORS LAND PLANNERS  
4300 BELLEVUE PLACE SUITE 130 ARLINGTON, TEXAS 76010 METRO (817)467-7700  
4100 AMARY CENTER BLVD. SUITE 200 FORT WORTH, TEXAS 76105 METRO (817)365-9857



**ROCKWALL TECHNOLOGY PARK**

**STORM DRAIN LINE A  
PLAN & PROFILE  
STA. 7+00 TO STA. 16+17.40**

STATE OF TEXAS  
RONALD RAMIREZ  
81821  
PROFESSIONAL ENGINEER  
3/10/99

COPYRIGHT ©  
WIER & ASSOCIATES, INC.  
LAST SHEET EDIT  
DATE 03-10-99  
WA# 9804  
**SHEET NO. 20**

TIME 111.33 FILE: SDAPP2.dwg