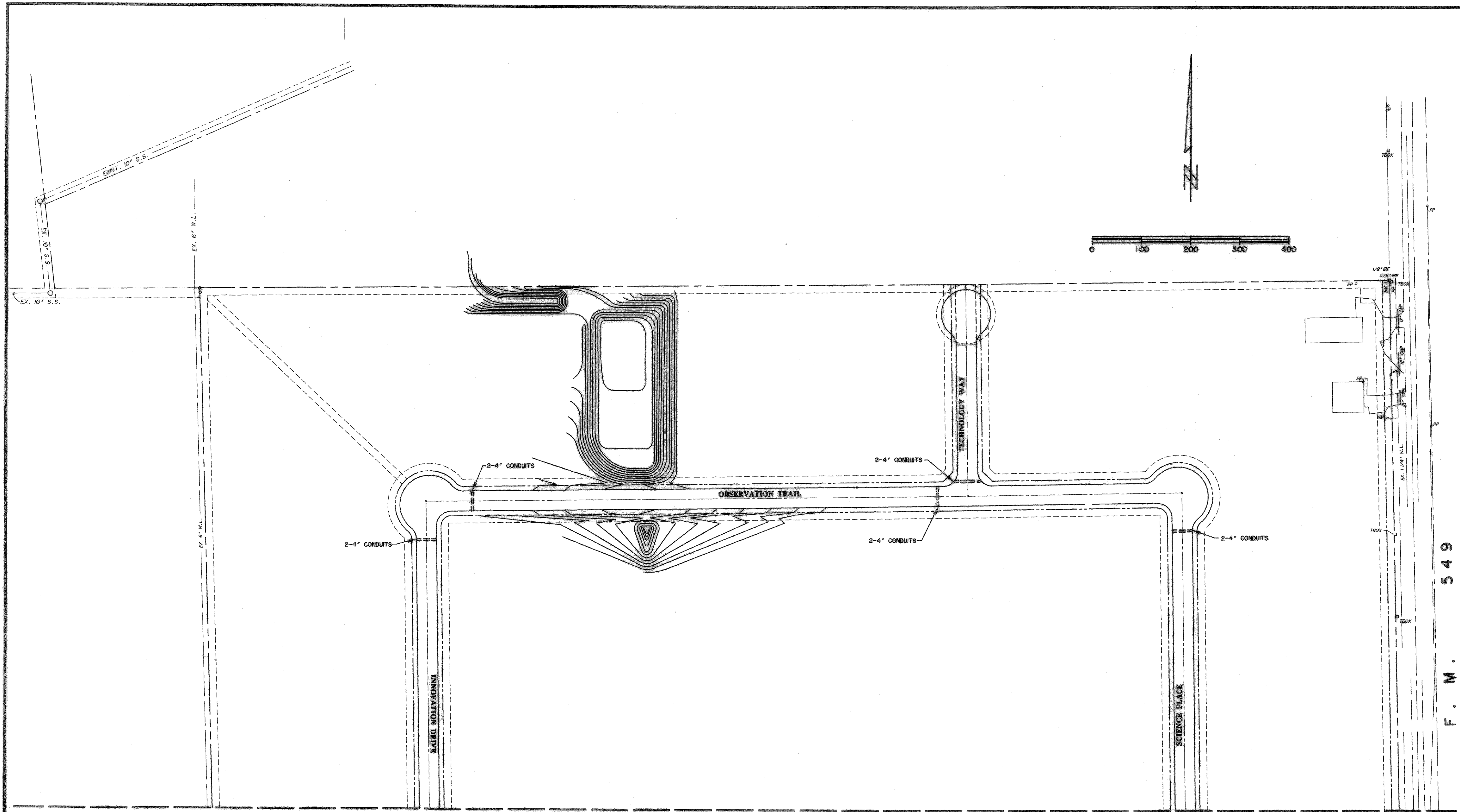
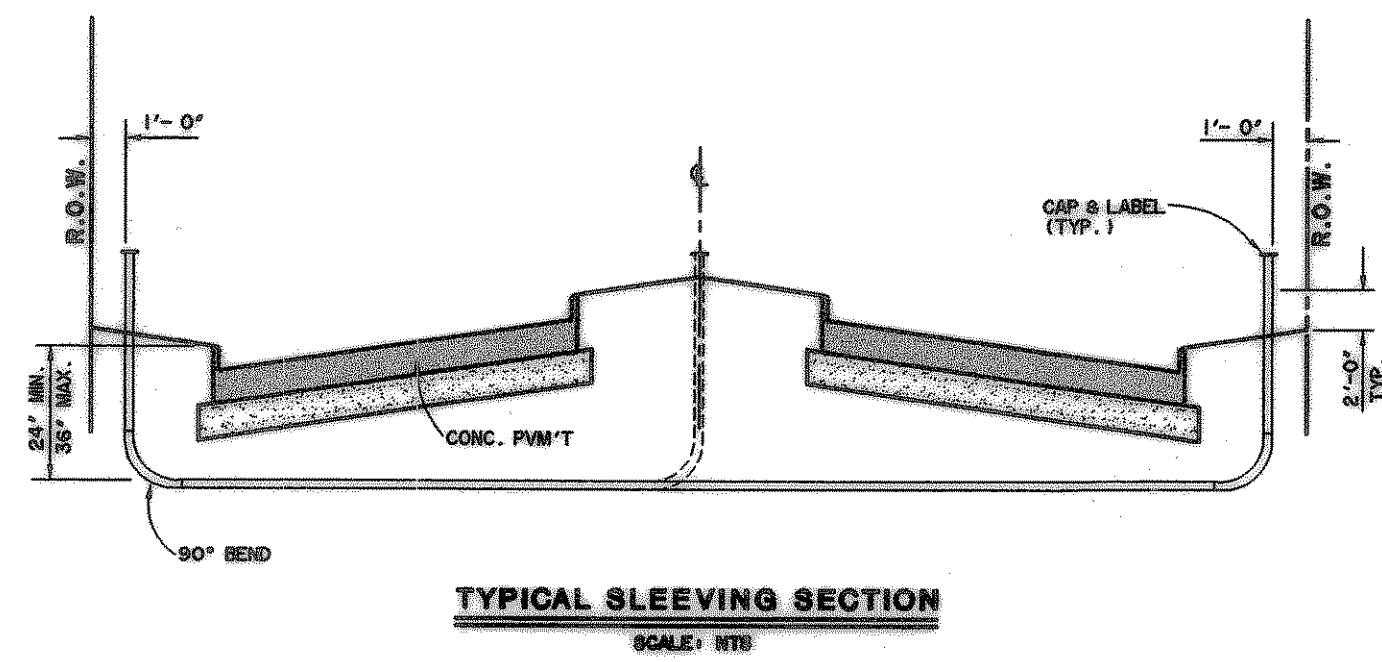


TIME 7:35 FILE 1 SLEEVE2.dwg



MATCH LINE - SEE SHEET NO. 41-A

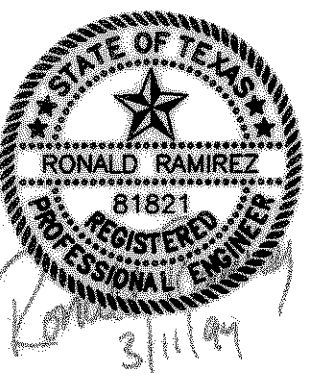
- NOTE:**
1. CONTRACTOR SHALL PLACE SLEEVES APPROXIMATELY 24" TO 36" BELOW PROPOSED GRADE. REFER TO DETAIL FOR PLACEMENT.
 2. LANDSCAPING AND STREET LIGHTS ARE NOT PART OF THIS CONTRACT. REFER TO LANDSCAPE ARCHITECT PLANS.



RECORD DRAWINGS

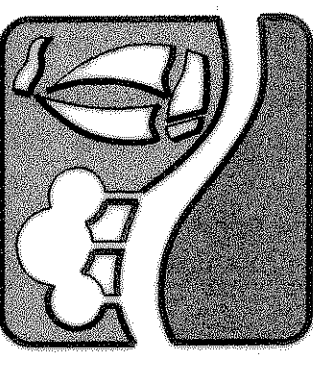
These as-built or record drawings for corrected specifications have been prepared, in part, on the basis of information compiled and furnished by others. The Engineer will not be responsible for any errors or omissions which have been incorporated into this document as a result.

F. M. 549



COPYRIGHT © WIER & ASSOCIATES, INC.
LAST SHEET EDIT
DATE 03-11-99
WA# 98041
SHEET NO. 41-B

ROCKWALL TECHNOLOGY PARK



PREPARED BY:
WIER & ASSOCIATES, INC.
ENGINEERS SURVEYORS LAND PLANNERS
4300 BELTWAY PLACE SUITE 130 ARLINGTON, TEXAS 76010 METRO (817)467-7700
4100 MAIN CARTER BLVD. SUITE 200 FORT WORTH, TEXAS 76150 METRO (817)355-9357