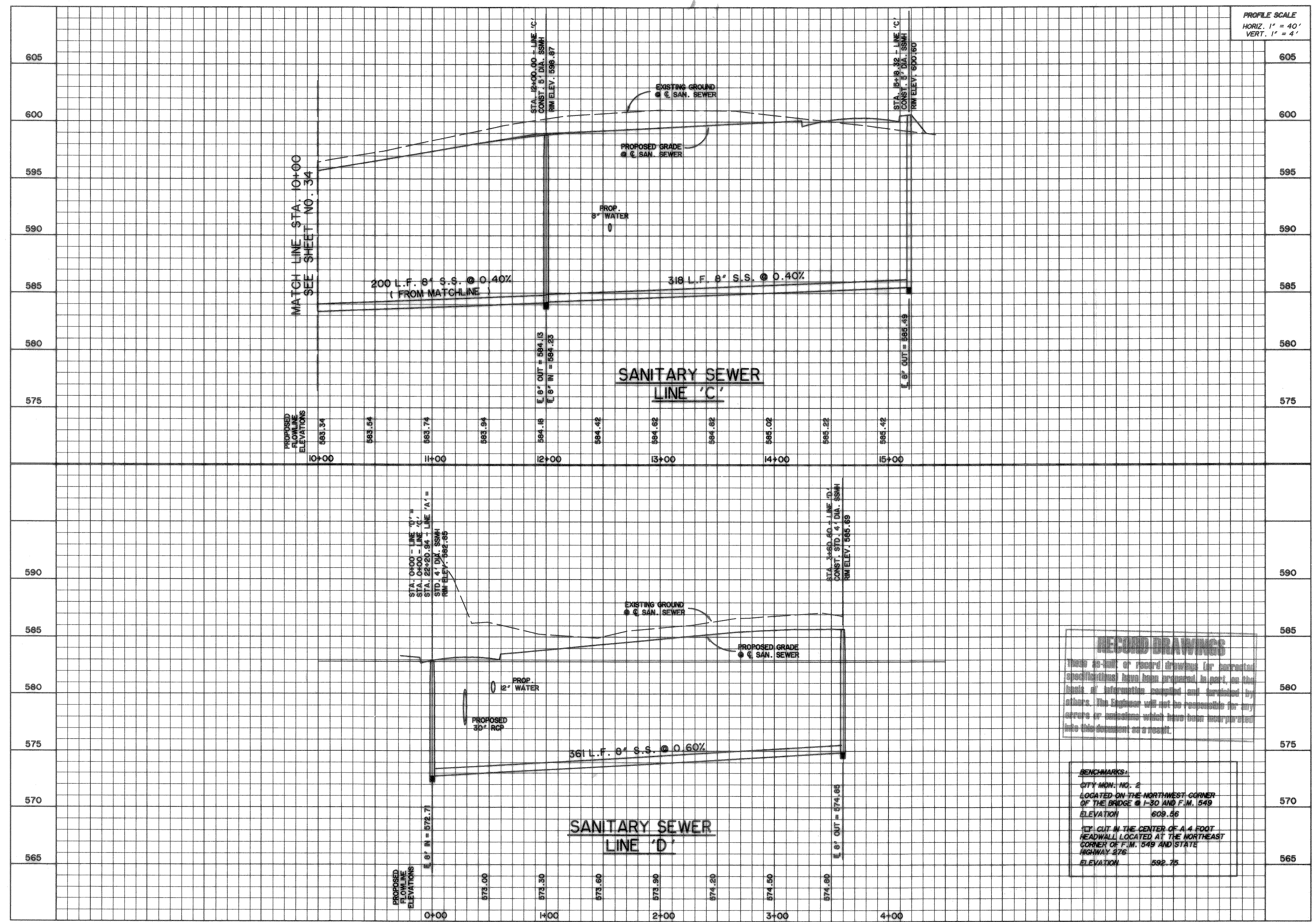


TIME: 16:57 FILE: SPROF-5.dwg

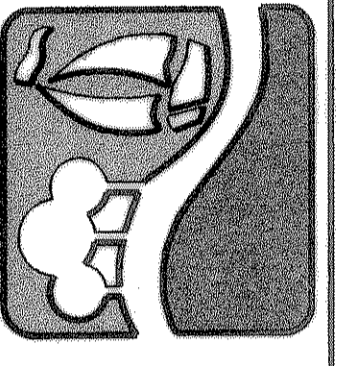


PROFILE SCALE
HORIZ. 1" = 40'
VERT. 1" = 4'

BEYOND DRAWINGS
These as-built or record drawings (or corrected specifications) have been prepared in part on the basis of information supplied and furnished by others. The Engineer will not be responsible for any errors or omissions which have been incorporated into this document as a result.

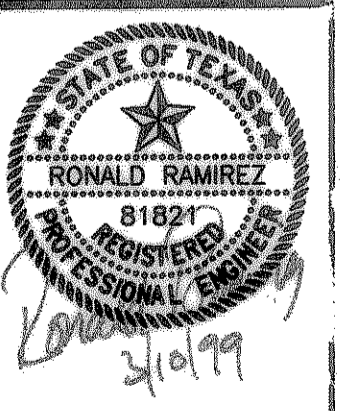
BENCHMARKS:
CITY MON. NO. 2
LOCATED ON THE NORTHWEST CORNER
OF THE BRIDGE @ I-30 AND F.M. 549
ELEVATION 609.66
1/4" CUT IN THE CENTER OF A 4 FOOT
HEADWALL LOCATED AT THE NORTHEAST
CORNER OF F.M. 549 AND STATE
HIGHWAY 276
ELEVATION 592.75

PREPARED BY:
WIER & ASSOCIATES, INC.
ENGINEERS SURVEYORS LAND PLANNERS
4300 BELTWAY PLACE SUITE 130 ARLINGTON, TEXAS 76010 METRO (817) 461-7700
4108 AMON UNDER BLDG. SUITE 200 FORT WORTH, TEXAS 76105 METRO (817) 355-9457



**ROCKWALL
TECHNOLOGY
PARK**

**SANITARY SEWER
PROFILES
LINES C & D**



COPYRIGHT ©
WIER & ASSOCIATES, INC.
LAST SHEET EDIT
DATE 08-10-99
WA# 99041
**SHEET NO.
35**