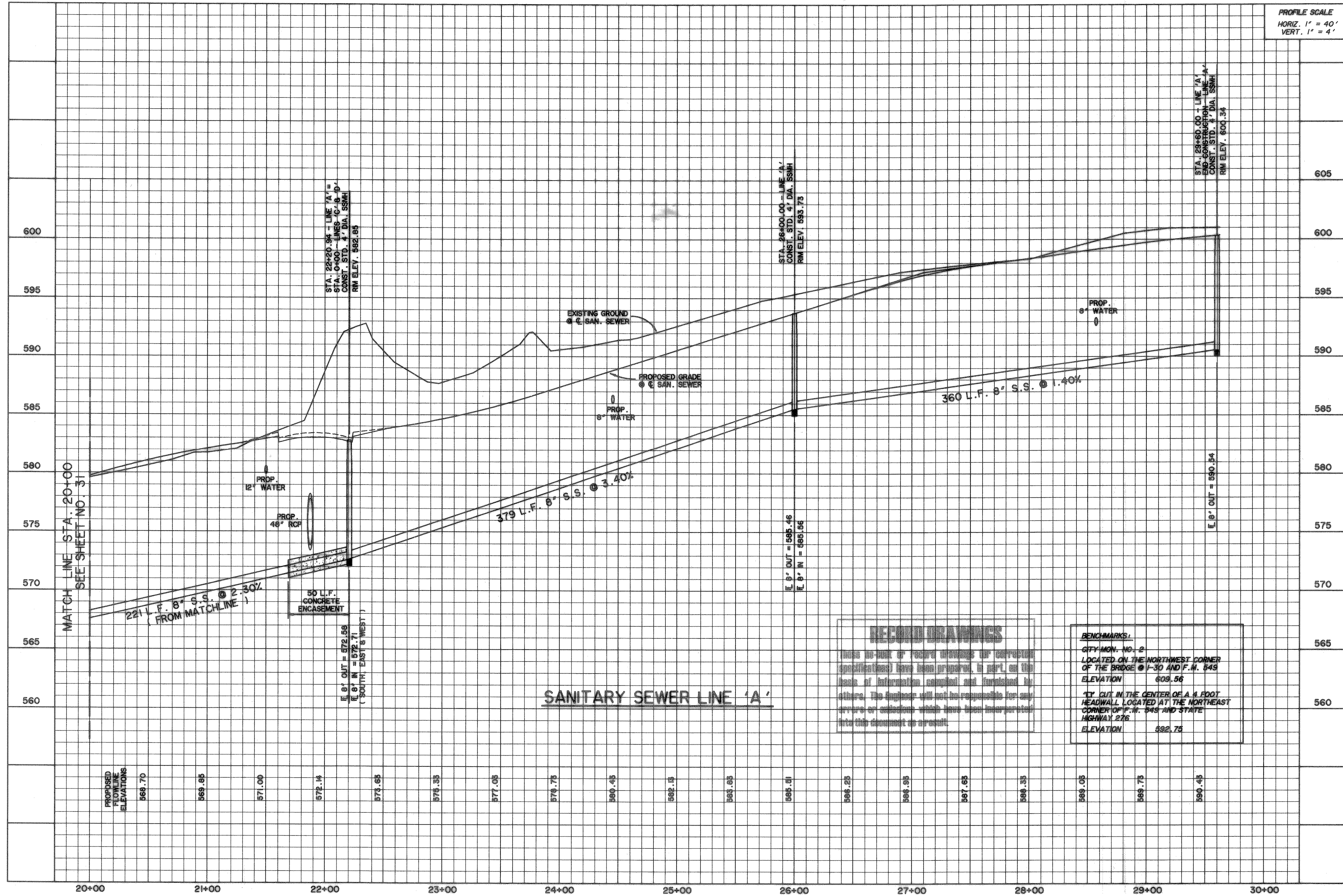


TIME: 16:52 FILE: SPROF-2.dwg



SANITARY SEWER LINE 'A'

RECORD DRAWINGS
 (When no part of record drawings or construction specifications have been prepared, in part, on the basis of information compiled and furnished by others, the Engineer will not be responsible for any errors or omissions which have been incorporated into this document as a result.)

BENCHMARKS:
 CITY MON. NO. 2
 LOCATED ON THE NORTHWEST CORNER OF THE BRIDGE @ I-30 AND F.M. 549
 ELEVATION 609.56
 "TY CUT IN THE CENTER OF A 4 FOOT HEADWALL LOCATED AT THE NORTHEAST CORNER OF F.M. 549 AND STATE HIGHWAY 276
 ELEVATION 592.75

PREPARED BY: **WIER & ASSOCIATES, INC.**
 ENGINEERS SURVEYORS LAND PLANNERS
 4300 BELLEVUE PLACE, SUITE 130 ARLINGTON, TEXAS 76018 METRO (817) 467-7700
 4108 AMARY CENTER BUILDING, SUITE 200 FORT WORTH, TEXAS 76103 METRO (817) 355-9637

ROCKWALL TECHNOLOGY PARK

SANITARY SEWER PROFILES LINE A

STATE OF TEXAS
 RONALD RAMIREZ
 81821
 PROFESSIONAL ENGINEER
 3/10/99

COPYRIGHT © WIER & ASSOCIATES, INC.
 LAST SHEET EDIT
 DATE 03-10-99
 WA# 99021

SHEET NO. 32