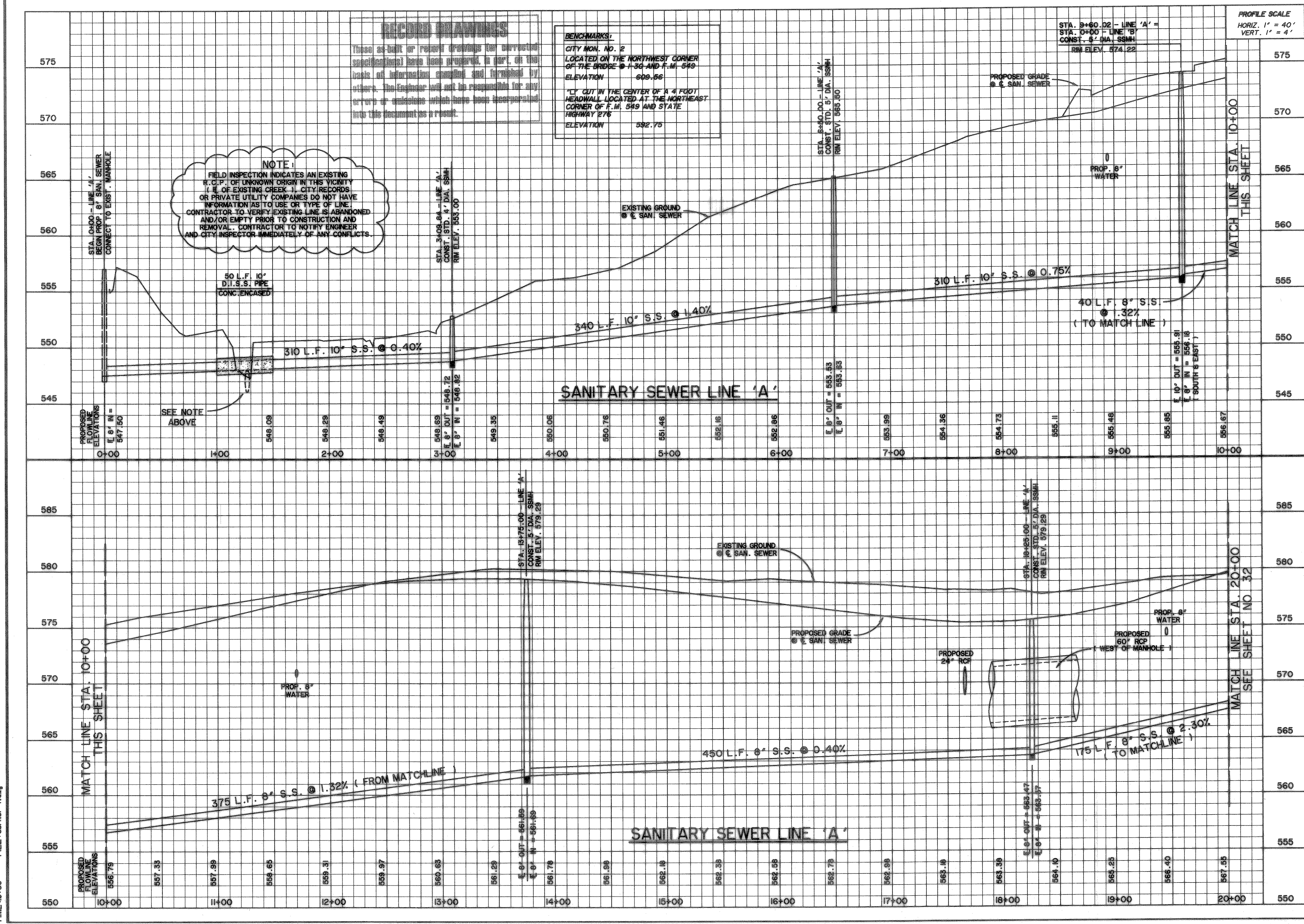


TIME: 16.50 FILE: SSSPROF-1.dwg



RECORD DRAWINGS

These as-built or record drawings are corrected and notational have been prepared, in part, on the basis of information obtained and furnished by others. The Engineer will not be responsible for any errors or omissions which have been incorporated into this document as a result.

BENCHMARKS:

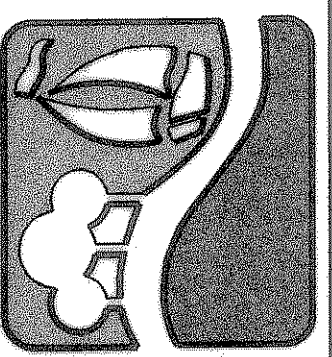
CITY MON. NO. 2
LOCATED ON THE NORTHWEST CORNER OF THE BRIDGE @ I-36 AND F.M. 549
ELEVATION 509.56

"CY" CUT IN THE CENTER OF A 4 FOOT HEADWALL LOCATED AT THE NORTHEAST CORNER OF F.M. 549 AND STATE HIGHWAY 276
ELEVATION 592.73

STA. 9+60.02 - LINE 'A' -
STA. 0+00 - LINE 'B'
CONST. @ 5" DIA. SSMH
RIM ELEV. 574.22

PROFILE SCALE
HORIZ. 1" = 40'
VERT. 1" = 4'

PREPARED BY:
VIA WIER & ASSOCIATES, INC.
ENGINEERS SURVEYORS LAND PLANNERS
430 BELWAY PLACE SUITE 130 ARLINGTON, TEXAS 76010 METRO (817)467-7700
4100 AMON CREEK BLVD. SUITE 200 FORT WORTH, TEXAS 76105 METRO (817)365-4457



ROCKWALL TECHNOLOGY PARK

SANITARY SEWER PROFILES LINE A



COPYRIGHT ©
WIER & ASSOCIATES, INC.
LAST SHEET OF 1
DATE: 03-10-99
WA# 98041

SHEET NO. 31