

**BENCHMARKS:**

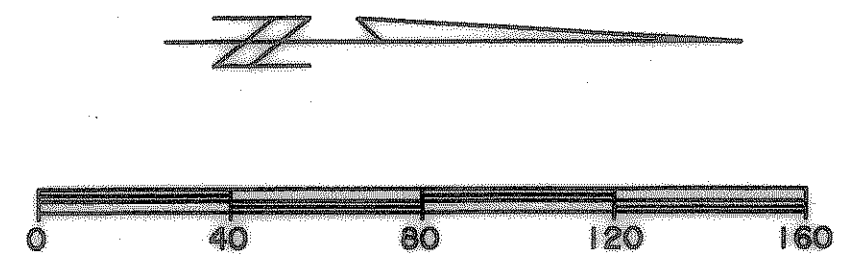
CITY MON. NO. 2  
 LOCATED ON THE NORTHWEST CORNER OF THE BRIDGE @ I-30 AND F.M. 549  
 ELEVATION 609.56

"X" CUT IN THE CENTER OF A 4 FOOT HEADWALL LOCATED AT THE NORTHEAST CORNER OF F.M. 549 AND STATE HIGHWAY 276  
 ELEVATION 592.75

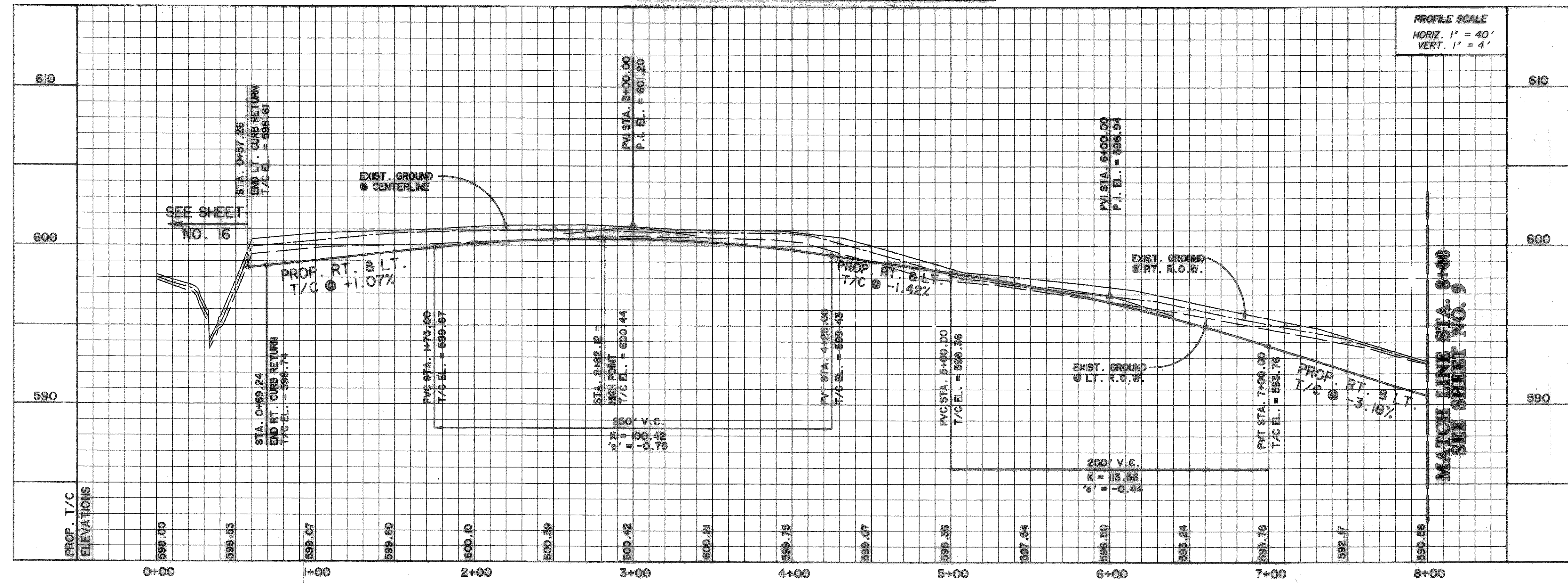
**CENTERLINE CURVE DATA**

$\Delta = 27^\circ 15' 49''$   
 $R = 900.00'$   
 $T = 218.26'$   
 $L = 428.26'$

SEE SHEET 16 FOR ADDITIONAL INFORMATION ON STATE HWY 276 GEOMETRY



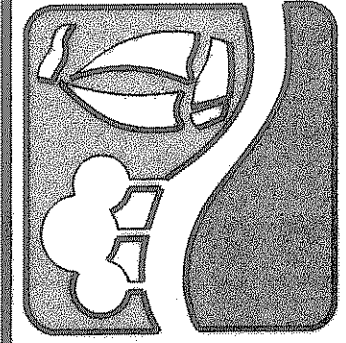
**INNOVATION DRIVE**



**RECORD DRAWINGS**

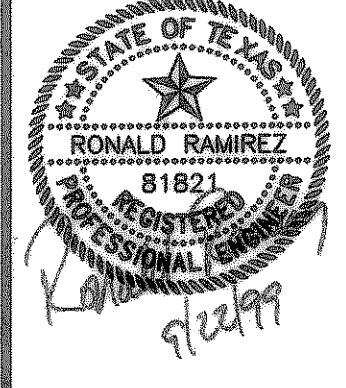
These as-built or record drawings for corrected specifications have been prepared, in part, on the basis of information supplied and furnished by others. The Engineer will not be responsible for any errors or omissions which have been incorporated into this document as a result.

PREPARED BY:  
**WIA WIER & ASSOCIATES, INC.**  
 ENGINEERS SURVEYORS LAND PLANNERS  
 4300 BELLEVUE PLACE SUITE 130 ARLINGTON, TEXAS 76010 METRO (817)462-7700  
 4100 AMON CANTER BUILD. SUITE 200 FORT WORTH, TEXAS 76155 METRO (817)355-9437



**ROCKWALL TECHNOLOGY PARK**

**INNOVATION DR. PAVING PLAN & PROFILE**  
 STA. 0+00 TO STA. 8+00



COPYRIGHT ©  
 WIER & ASSOCIATES, INC.  
 LAST SHEET EDIT  
 DATE 09-22-99  
 WAH 98091  
**SHEET NO. 8**