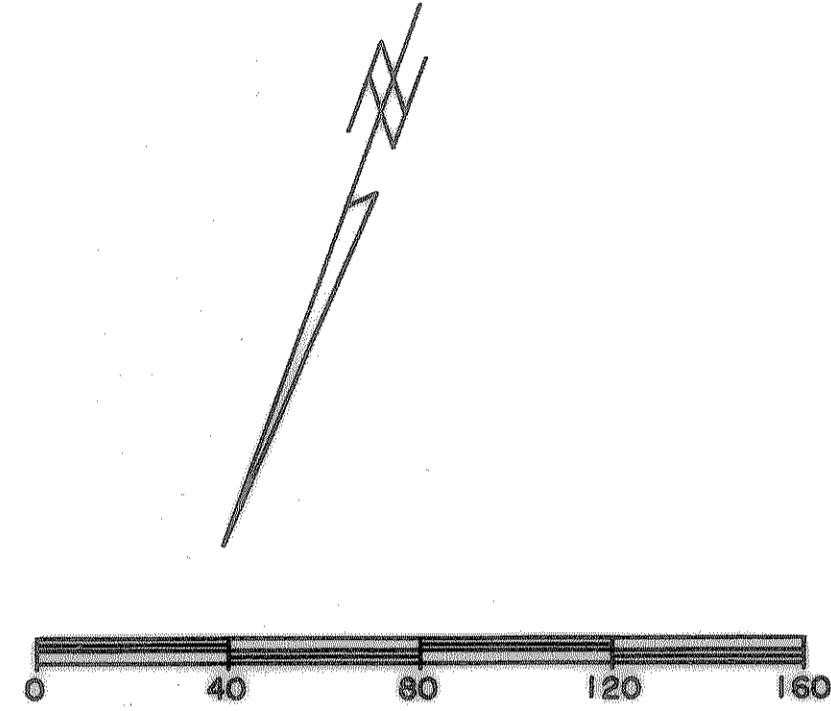
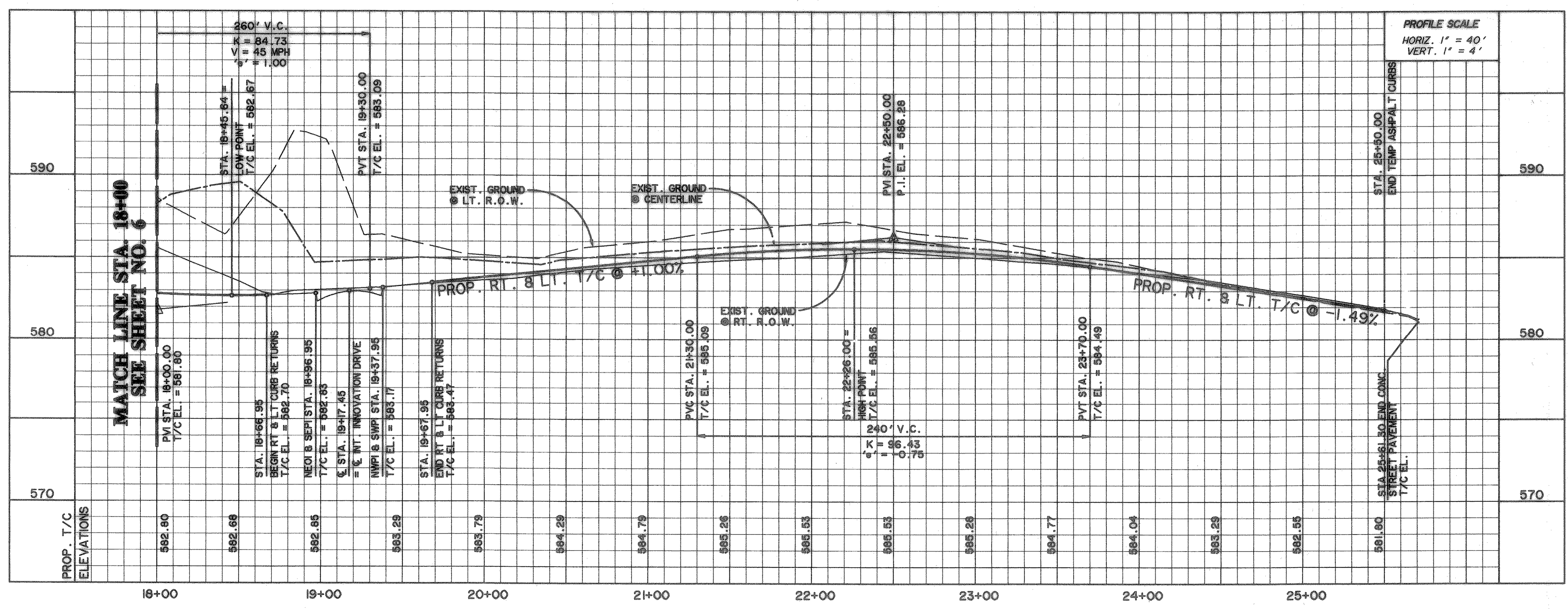


CENTERLINE CURVE DATA
 $\Delta = 27^{\circ}15'49''$
 $R = 1000.00'$
 $T = 265.78'$
 $L = 523.42'$



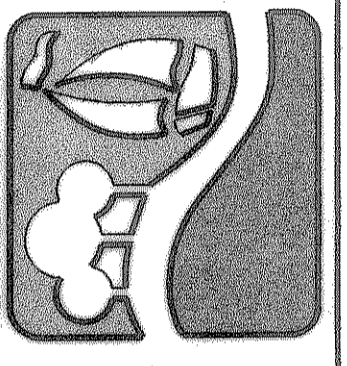
DISCOVERY BOULEVARD



BENCHMARKS:
 CITY MON. NO. 2
 LOCATED ON THE NORTHWEST CORNER OF THE BRIDGE @ I-30 AND F.M. 549
 ELEVATION 609.56
 "C" CUT IN THE CENTER OF A 4 FOOT HEADWALL LOCATED AT THE NORTHEAST CORNER OF F.M. 549 AND STATE HIGHWAY 276
 ELEVATION 592.75

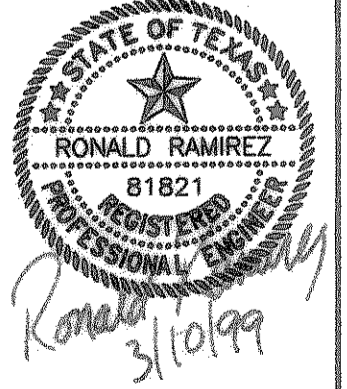
RECORD DRAWINGS
 These as-built or record drawings (for corrected specifications) have been prepared, in part, on the basis of information compiled and furnished by others. The Engineer will not be responsible for any errors or omissions which have been incorporated into this document as a result.

PREPARED BY:
VIA WIER & ASSOCIATES, INC.
 ENGINEERS SURVEYORS LAND PLANNERS
 4300 BELLEVUE PLACE SUITE 130 ARLINGTON, TEXAS 76010 (817)467-7700
 4108 MAIN CENTER BLVD. SUITE 200 FORT WORTH, TEXAS 76102 (817)565-9457



ROCKWALL TECHNOLOGY PARK

DISCOVERY BLVD PAVING PLAN & PROFILE
 STA. 18+00 TO STA. 25+71.30



COPYRIGHT © WIER & ASSOCIATES, INC.
 LAST SHEET EDIT
 DATE 08-09-99
 WA# 9804
SHEET NO. 7

TIME 16:19 FILE: App3.dwg