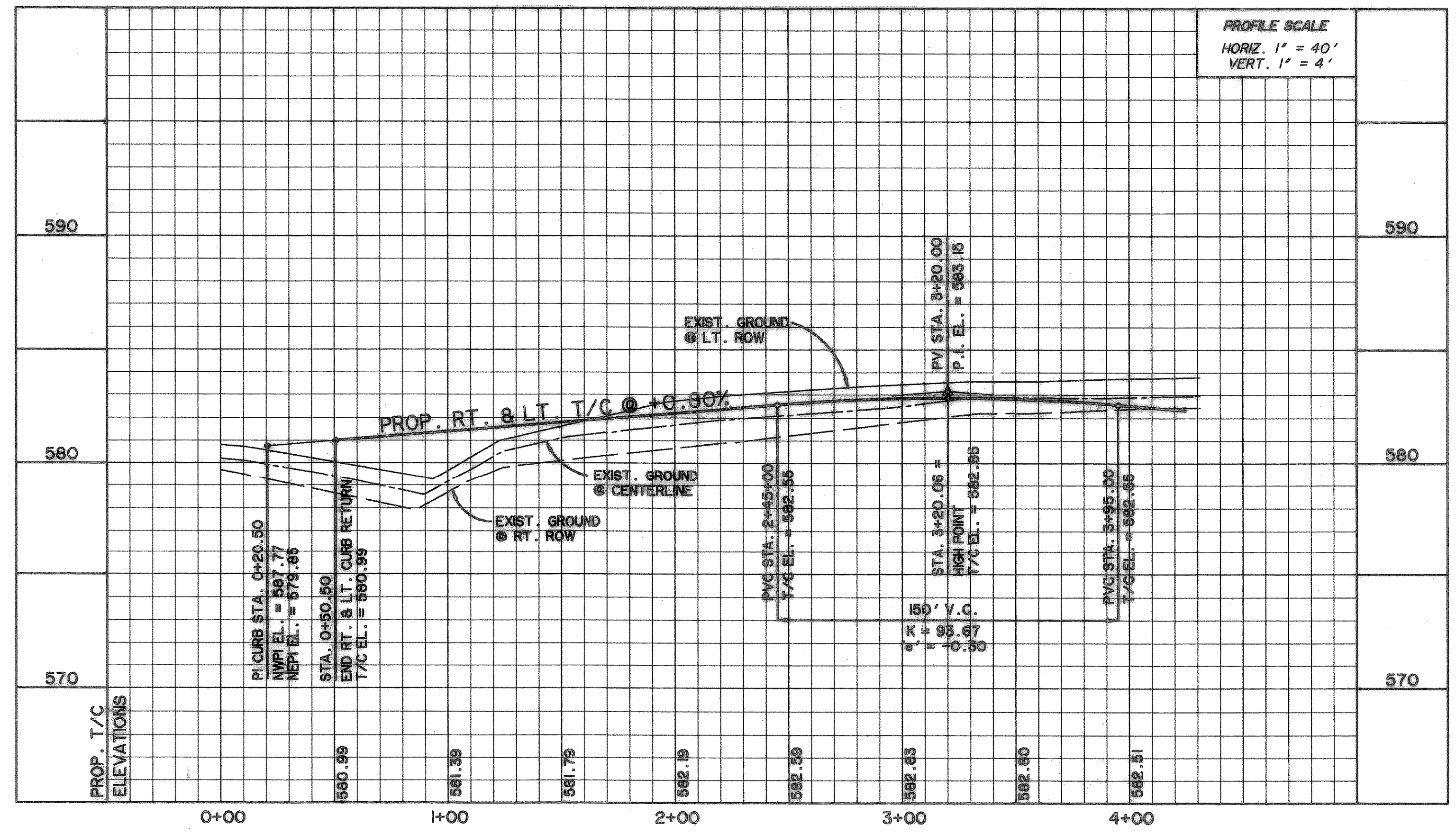
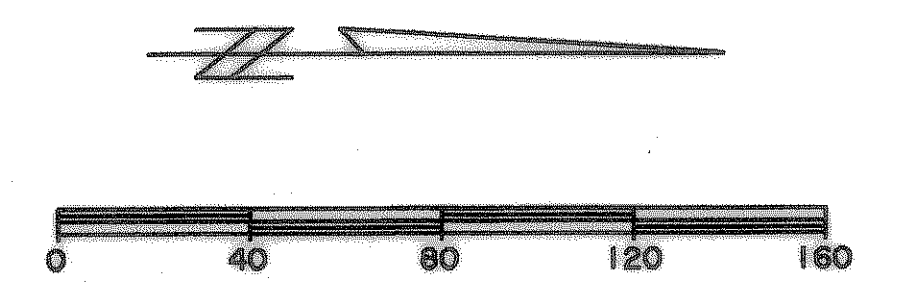


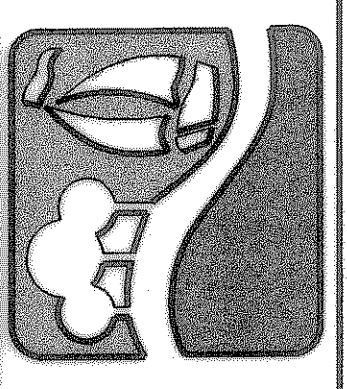
**BENCHMARKS:**  
 CITY MON. NO. 2  
 LOCATED ON THE NORTHWEST CORNER  
 OF THE BRIDGE @ I-30 AND F.M. 549  
 ELEVATION 609.56  
 "C" CUT IN THE CENTER OF A 4 FOOT  
 HEADWALL LOCATED AT THE NORTHEAST  
 CORNER OF F.M. 549 AND STATE  
 HIGHWAY 276  
 ELEVATION 592.75

**TECHNOLOGY WAY**



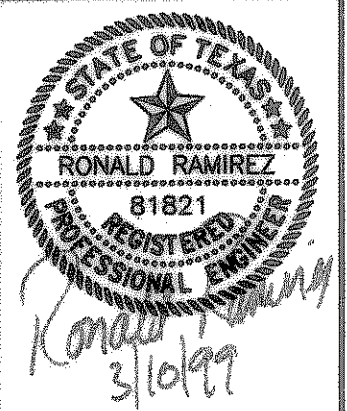
**RECORD DRAWINGS**  
 These as-built or record drawings (or corrected specifications) have been prepared, in part, on the basis of information compiled and furnished by others. The Engineer will not be responsible for any errors or omissions which have been incorporated into this document as a result.

PREPARED BY:  
**WIA WIER & ASSOCIATES, INC.**  
 ENGINEERS SURVEYORS LAND PLANNERS  
 430 BELLEVUE PLACE SUITE 130 ARLINGTON, TEXAS 76010 METRO (817)467-7700  
 4108 AMAR CANYON BLVD. SUITE 200 FORT WORTH, TEXAS 76103 METRO (817)355-9407



**ROCKWALL TECHNOLOGY PARK**

**TECHNOLOGY WAY PAVING PLAN & PROFILE**  
 STA. 0+00 TO STA. 4+26.00



COPYRIGHT ©  
 WIER & ASSOCIATES, INC.  
 LAST SHEET EDIT  
 DATE 03-08-99  
 WA 5804  
**SHEET NO. 15**

TIME: 17:24 FILE: FPPI.dwg