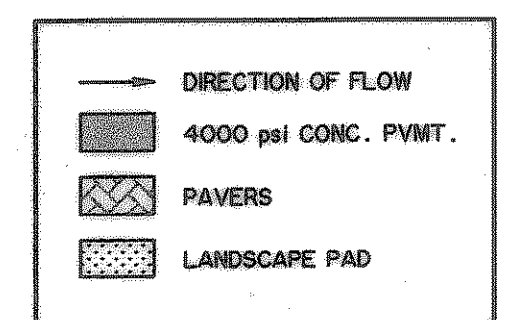
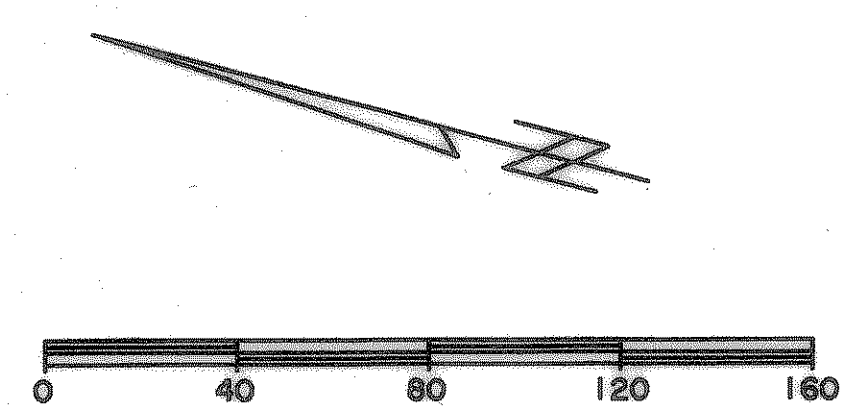
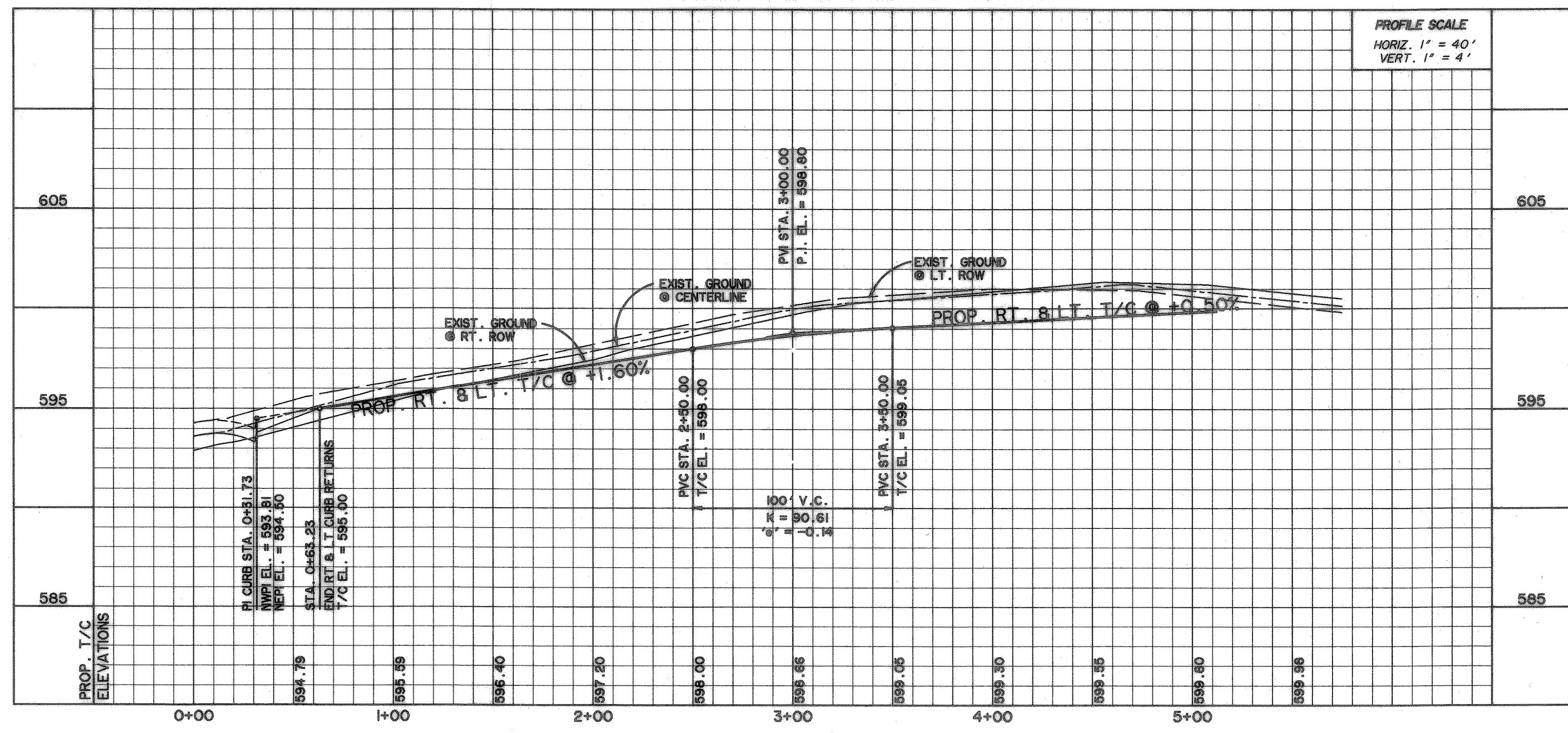


CURVE TABLE

CURVE	LENGTH	RADIUS	DELTA	TANGENT
C9	26.78	30.00	51°08'48"	14.36
C10	248.81	50.50	282°17'36"	40.68
C11	26.78	30.00	51°08'48"	14.36



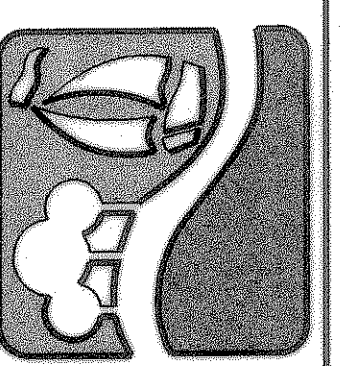
RESEARCH CIRCLE



BENCHMARKS:
 CITY MON. NO. 2
 LOCATED ON THE NORTHWEST CORNER
 OF THE BRIDGE @ I-30 AND F.M. 549
 ELEVATION 609.56
 *'Y' CUT IN THE CENTER OF A 4 FOOT
 HEADWALL LOCATED AT THE NORTHEAST
 CORNER OF F.M. 549 AND STATE
 HIGHWAY 276
 ELEVATION 592.75

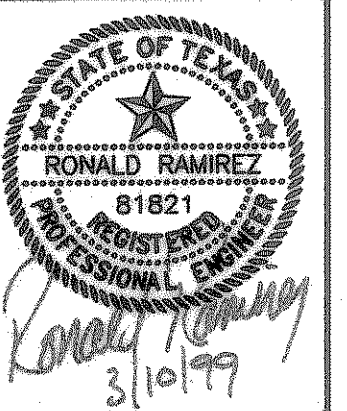
RECORD DRAWINGS
 These as-built or record drawings (or corrected specifications) have been prepared, in part, on the basis of information compiled and furnished by others. The Engineer will not be responsible for any errors or omissions which have been incorporated into this document as a result.

PREPARED BY:
WIA WIER & ASSOCIATES, INC.
 ENGINEERS SURVEYORS LAND PLANNERS
 4300 BELLEVUE PLACE SUITE 130 ARLINGTON, TEXAS 76010 METRO (817)467-7700
 4108 MAIN CANTER BLVD. SUITE 200 FORT WORTH, TEXAS 76102 METRO (817)355-4437



ROCKWALL TECHNOLOGY PARK

RESEARCH CIR. PAVING PLAN & PROFILE
 STA. 0+00 TO STA. 5+75



COPYRIGHT ©
 WIER & ASSOCIATES, INC.
 LAST SHEET EDIT
 DATE 03-09-98
 WA# 98021
SHEET NO. 14

TIME: 17.21 FILE: DPPI.dwg