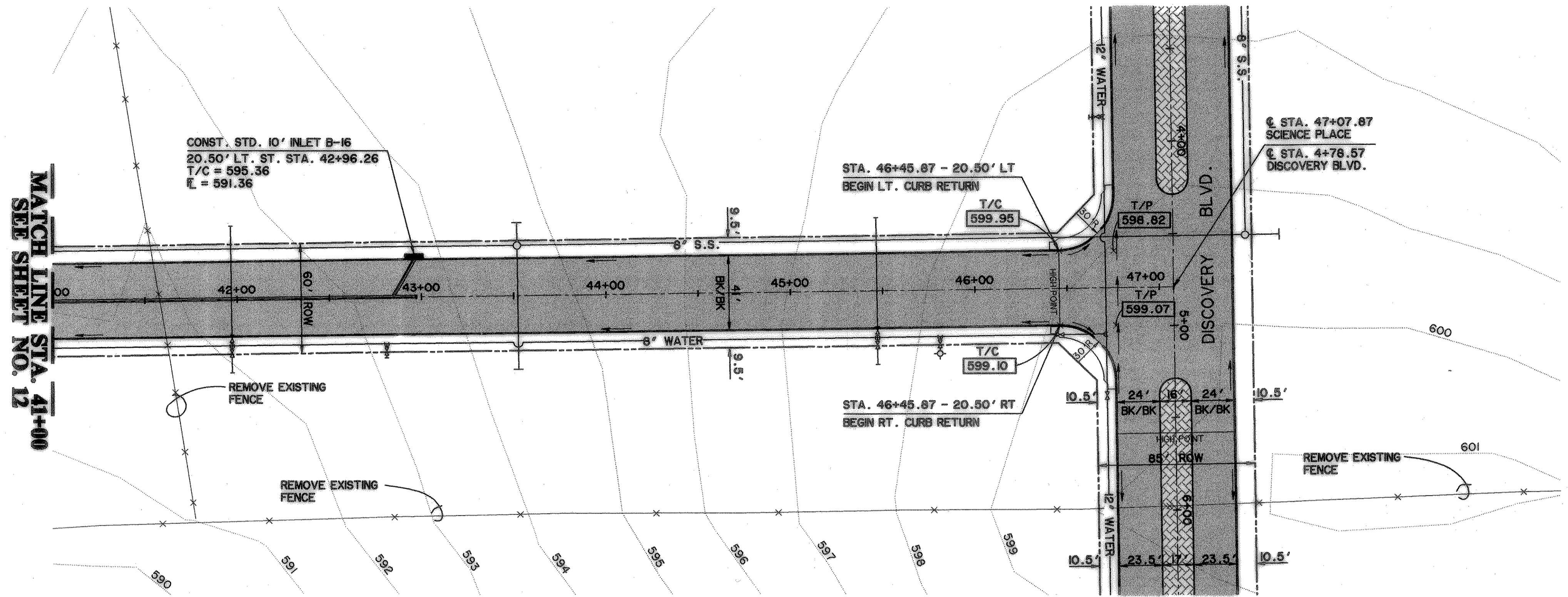
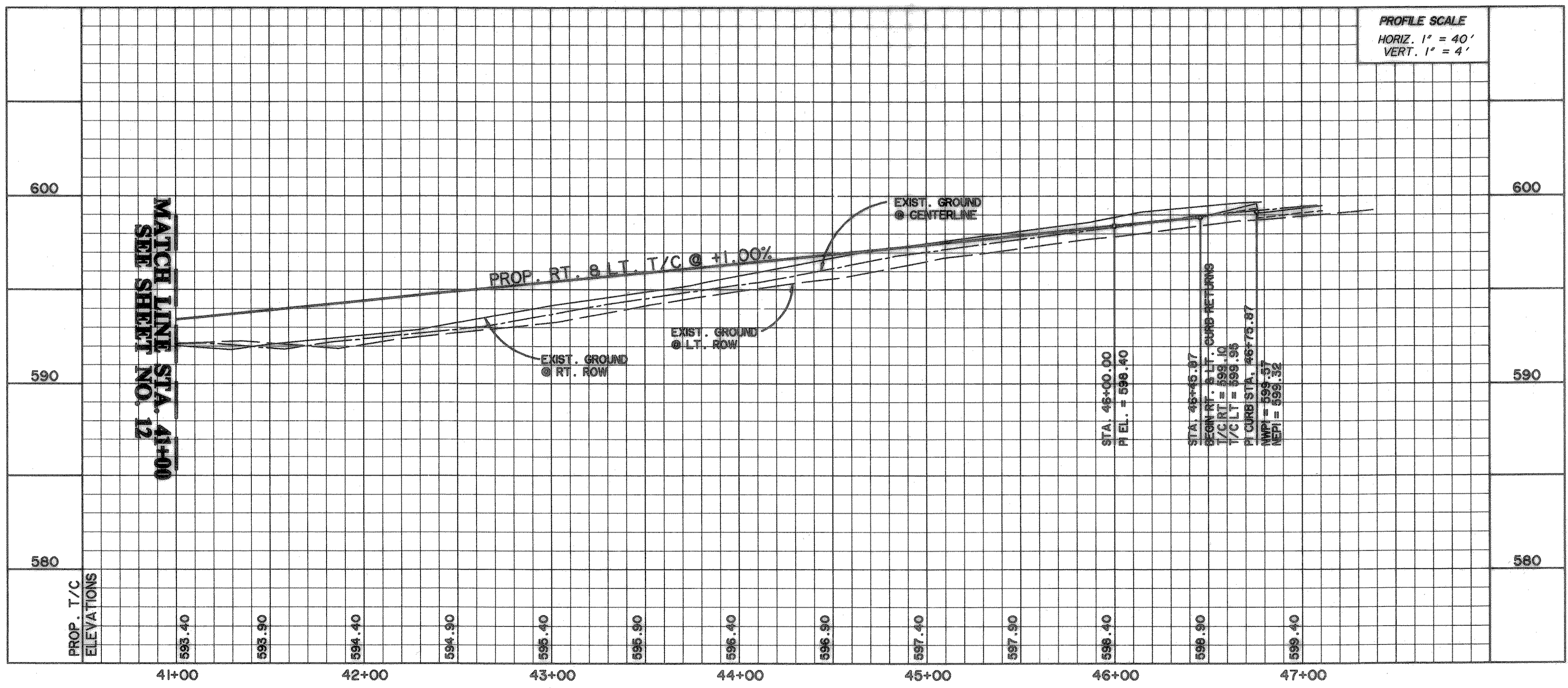


TIME: 17:14 FILE: Bpp6.dwg



DIRECTION OF FLOW

 4000 psi CONC. PAVMT.

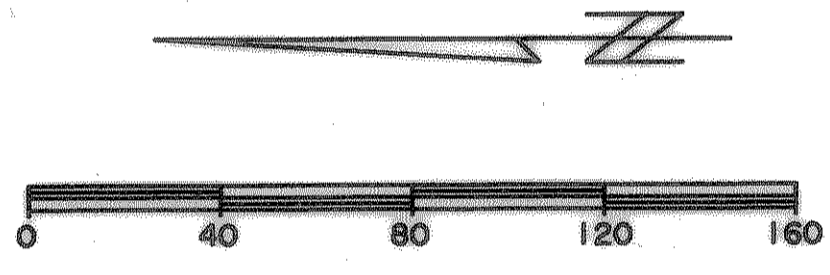
 PAVERS

 LANDSCAPE PAD

BENCHMARKS:

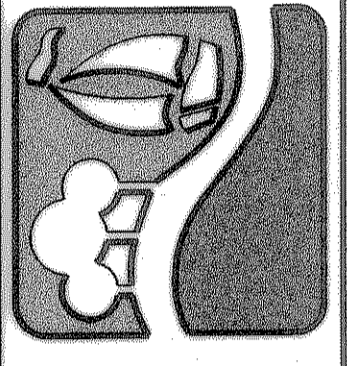
CITY MON. NO. 2
 LOCATED ON THE NORTHWEST CORNER
 OF THE BRIDGE @ I-30 AND F.M. 549
 ELEVATION 609.56

"Y" CUT IN THE CENTER OF A 4 FOOT
 HEADWALL LOCATED AT THE NORTHEAST
 CORNER OF F.M. 549 AND STATE
 HIGHWAY 276
 ELEVATION 592.75



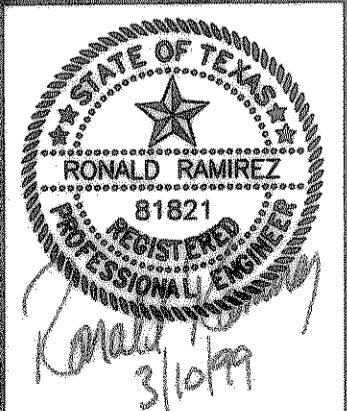
SCIENCE PLACE

PREPARED BY:
VIA WIER & ASSOCIATES, INC.
 ENGINEERS SURVEYORS LAND PLANNERS
 430 BELWAY PLACE SUITE 130 ARLINGTON, TEXAS 76010 METRO (817)467-7700
 4106 AMARILLO CANYON BLVD. SUITE 200 FORT WORTH, TEXAS 76105 METRO (817)355-4457



**ROCK WALL
 TECHNOLOGY
 PARK**

**SCIENCE PLACE
 PAVING
 PLAN & PROFILE**
 STA. 41+00 TO STA. 47+07.87



RECORD DRAWINGS

These as-built or record drawings (or corrected specifications) have been prepared, in part, on the basis of information compiled and furnished by others. The Engineer will not be responsible for any errors or omissions which have been incorporated into this document as a result.

COPYRIGHT ©
 WIER & ASSOCIATES, INC.
 LAST SHEET EDIT
 DATE 08-09-99
 WAB 8804
SHEET NO.
 13