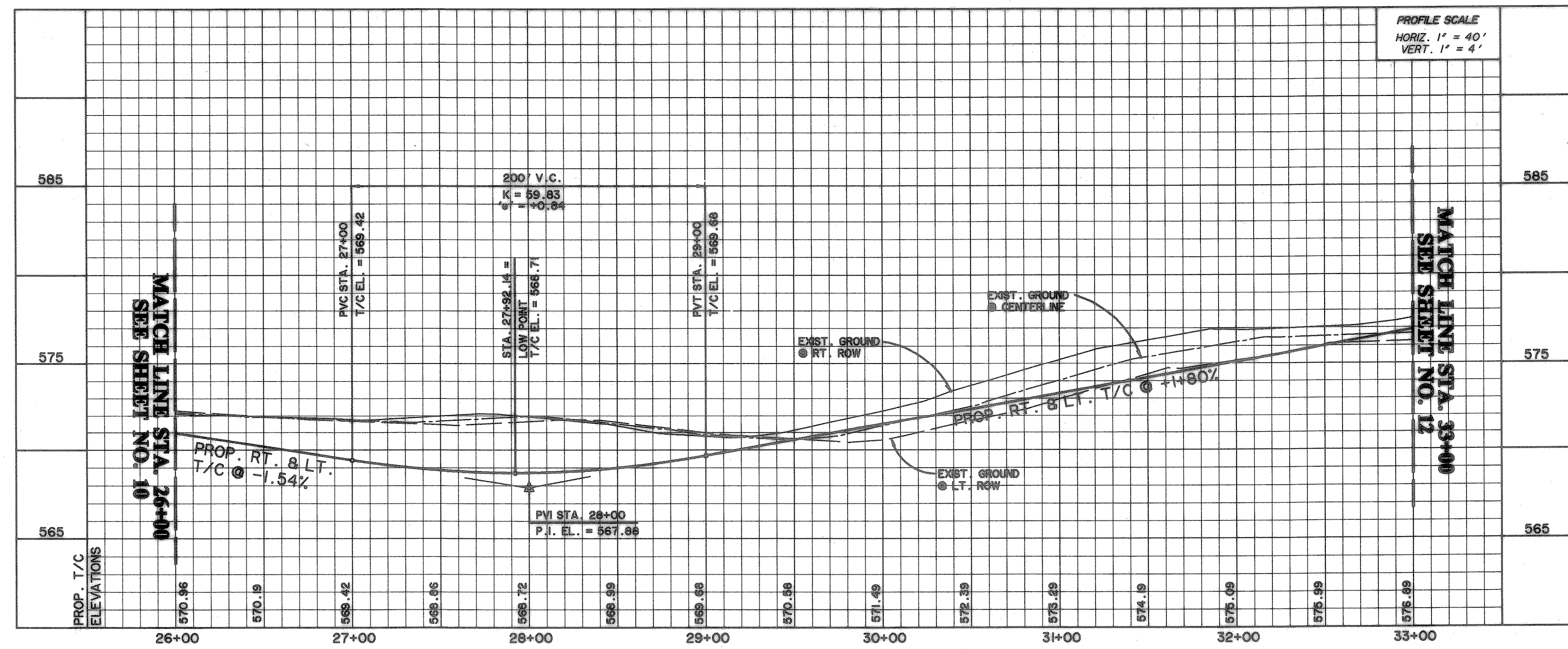


— DIRECTION OF FLOW  
 ■ 4000 PSI CONC. PAVT.

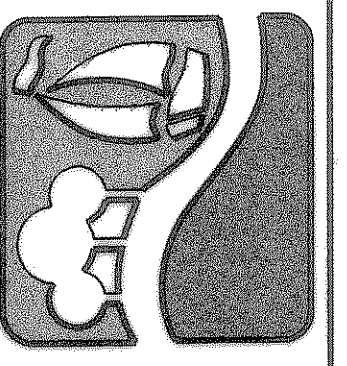
**OBSERVATION TRAIL**



**BENCHMARKS:**  
 CITY MON. NO. 2  
 LOCATED ON THE NORTHWEST CORNER  
 OF THE BRIDGE @ I-30 AND F.M. 549  
 ELEVATION 609.56  
 "C" CUT IN THE CENTER OF A 4 FOOT  
 HEADWALL LOCATED AT THE NORTHEAST  
 CORNER OF F.M. 549 AND STATE  
 HIGHWAY 276  
 ELEVATION 592.75

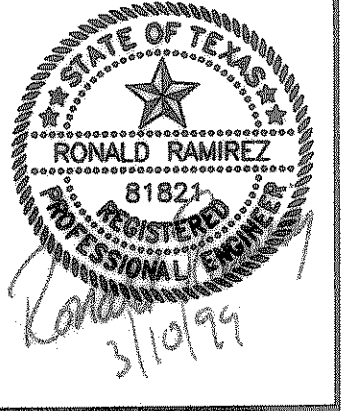
**RECORD DRAWINGS**  
 These as-built or record drawings (or corrected specifications) have been prepared, in part, on the basis of information compiled and furnished by others. The Engineer will not be responsible for any errors or omissions which have been incorporated into this document as a result.

PREPARED BY:  
**WIA WIER & ASSOCIATES, INC.**  
 ENGINEERS SURVEYORS LAND PLANNERS  
 4300 RELIANCE PLACE SUITE 130 ARLINGTON, TEXAS 76010 METRO (817)467-7700  
 4100 MAIN STREET BLD. SUITE 200 FORT WORTH, TEXAS 76105 METRO (817)365-4437



**ROCKWALL TECHNOLOGY PARK**

**OBSERVATION TR. PAVING PLAN & PROFILE**  
 STA. 26+00 TO STA. 33+00



COPYRIGHT © WIER & ASSOCIATES, INC.  
 LAST SHEET FOLD  
 DATE 03-09-99  
 WAH 98041  
**SHEET NO. 11**