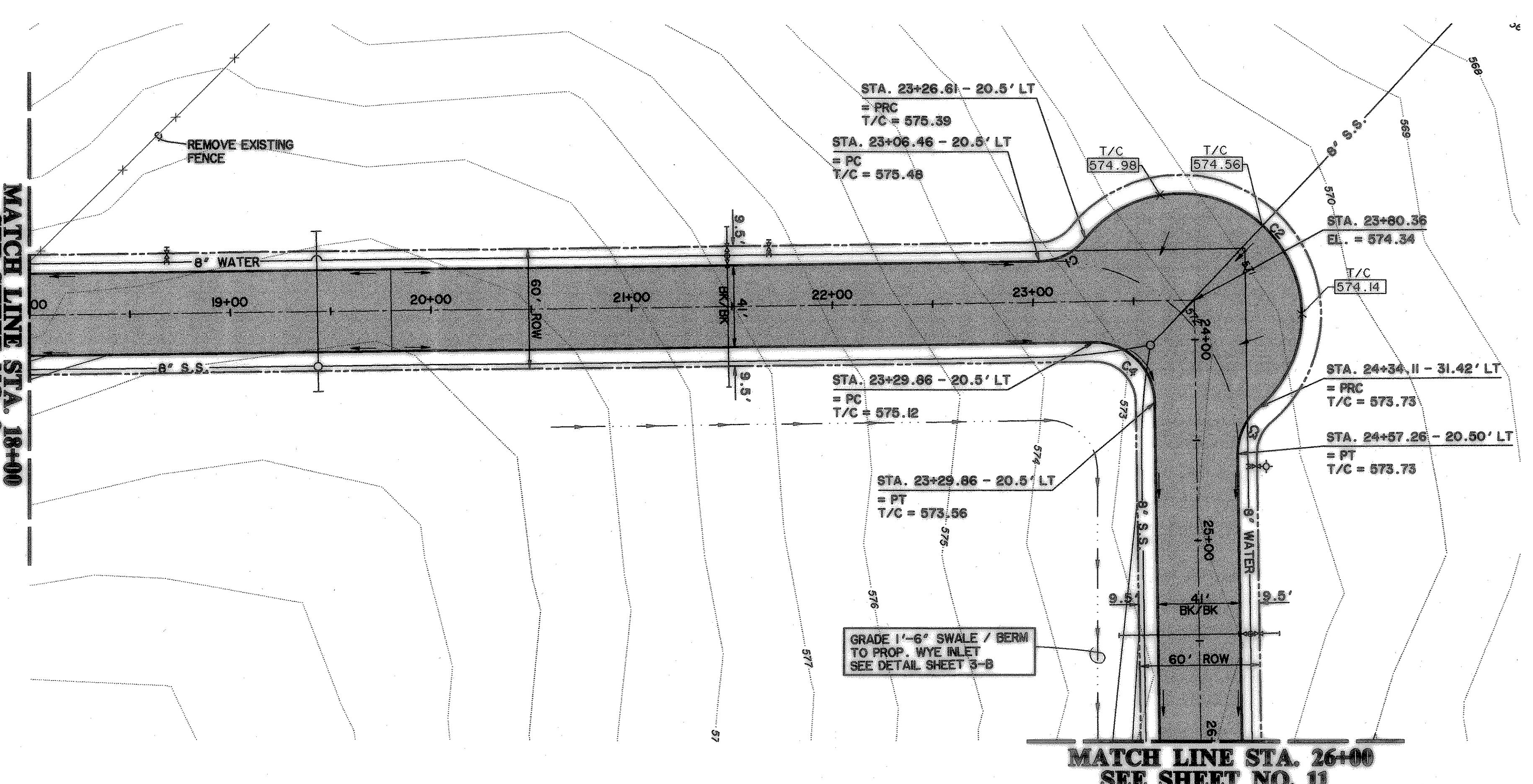


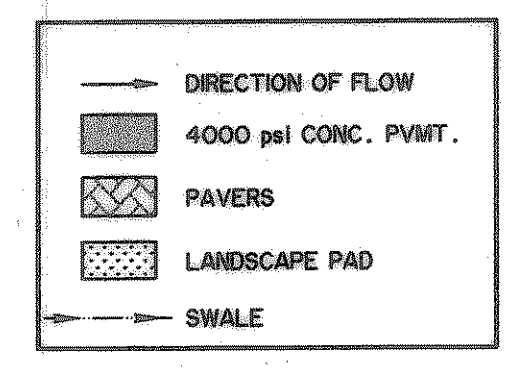
MATCH LINE STA. 18+00
SEE SHEET NO. 9



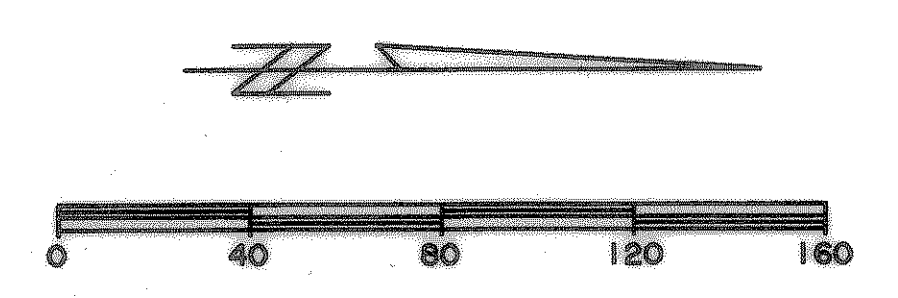
MATCH LINE STA. 26+00
SEE SHEET NO. 11

BENCHMARKS:
CITY MON. NO. 2
LOCATED ON THE NORTHWEST CORNER
OF THE BRIDGE @ I-30 AND F.M. 549
ELEVATION 609.56

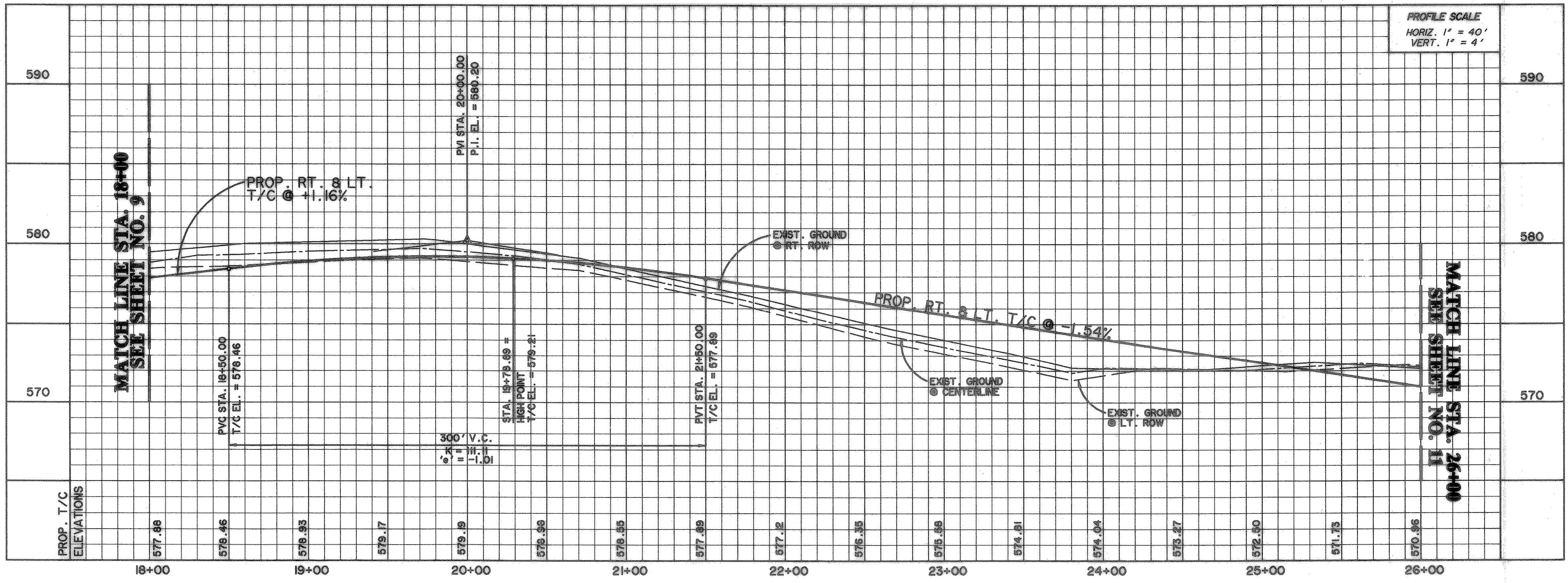
"X" CUT IN THE CENTER OF A 4 FOOT
HEADWALL LOCATED AT THE NORTHEAST
CORNER OF F.M. 549 AND STATE
HIGHWAY 276
ELEVATION 592.75



CURVE TABLE				
CURVE	LENGTH	RADIUS	DELTA	TANGENT
C1	26.44	30.00	50°29'42"	14.15
C2	201.67	60.50	190°59'25"	629.88
C3	26.44	30.00	50°29'42"	14.15
C4	47.12	30.00	90°00'00"	30.00



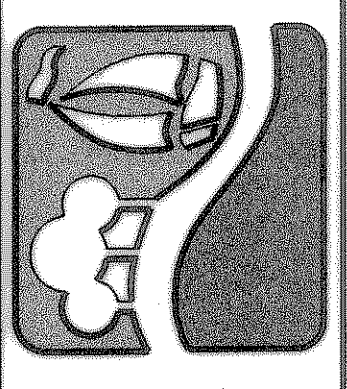
INNOVATION DRIVE



PROFILE SCALE
HORIZ. 1" = 40'
VERT. 1" = 4'

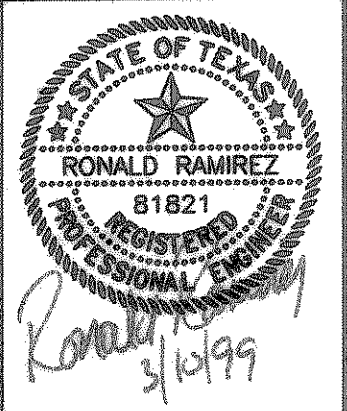
RECORD DRAWINGS
These as-built or record drawings (or corrected specifications) have been prepared, in part, on the basis of information compiled and furnished by others. The Engineer will not be responsible for any errors or omissions which have been incorporated into this document as a result.

PREPARED BY:
VIA WIER & ASSOCIATES, INC.
ENGINEERS SURVEYORS LAND PLANNERS
430 BELWAY PLACE SUITE 130 ARLINGTON, TEXAS 76010 METRO (817)407-7700
4108 AMWAY CENTER BLVD. SUITE 200 FORT WORTH, TEXAS 76105 METRO (817)555-8457



**ROCKWALL
PAVING
TECHNOLOGY
PARK**

**INNOVATION DR.
PAVING
PLAN & PROFILE**
STA. 18+00 TO STA. 26+00



COPYRIGHT ©
WIER & ASSOCIATES, INC.
LAST SHEET EDIT
DATE 03-01-99
WAW 98041
SHEET NO. 10

TIME: 16:47 FILE: 1.BPP3.dwg