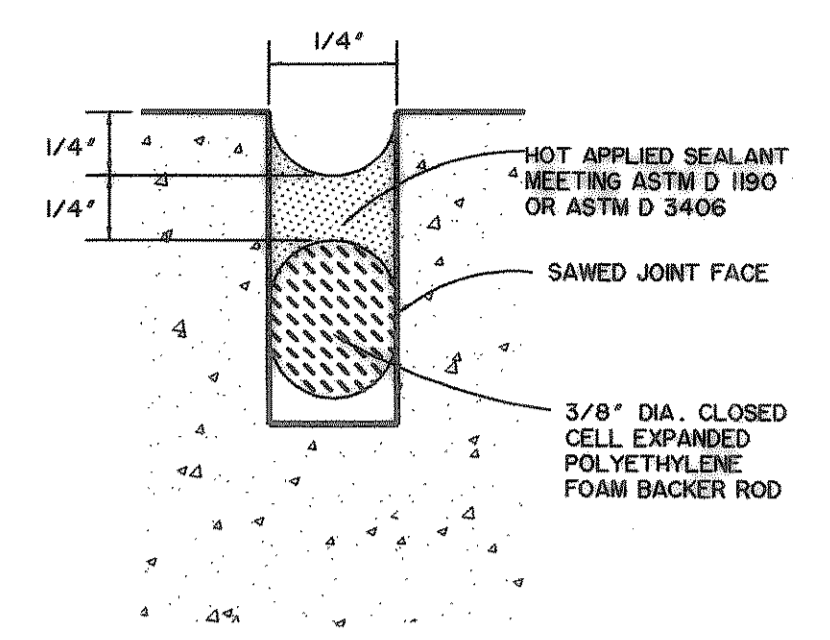
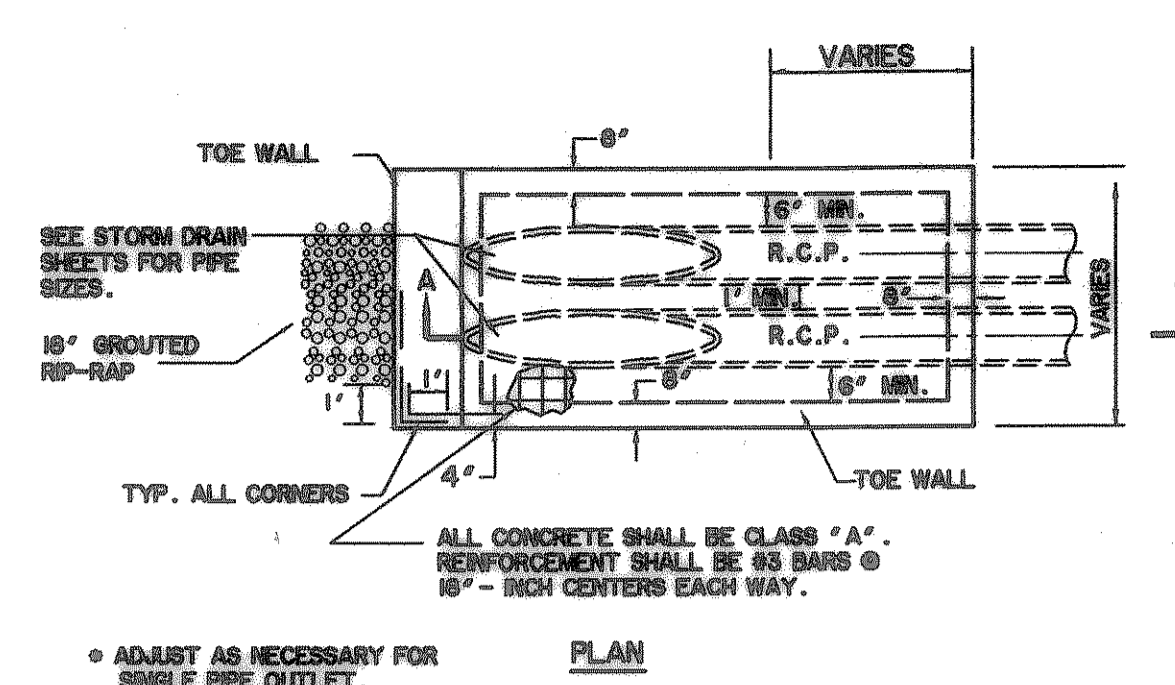


**JOINT SEALANT DETAIL No. 1  
SEAL FOR EXPANSION JOINT**  
N.T.S.

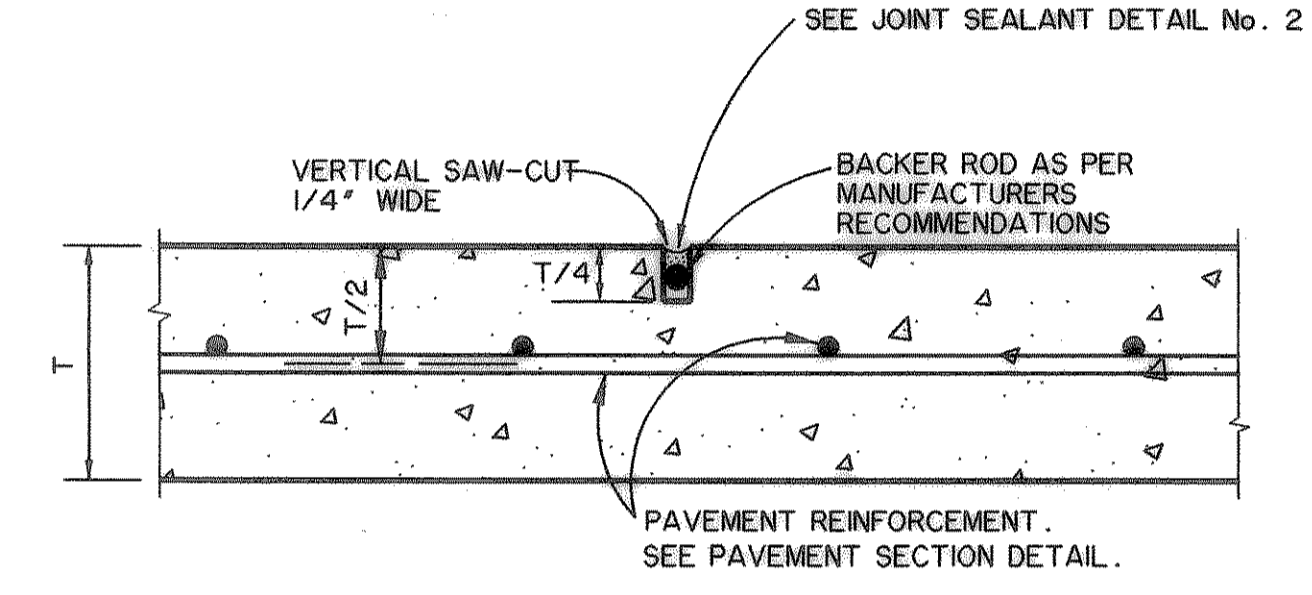
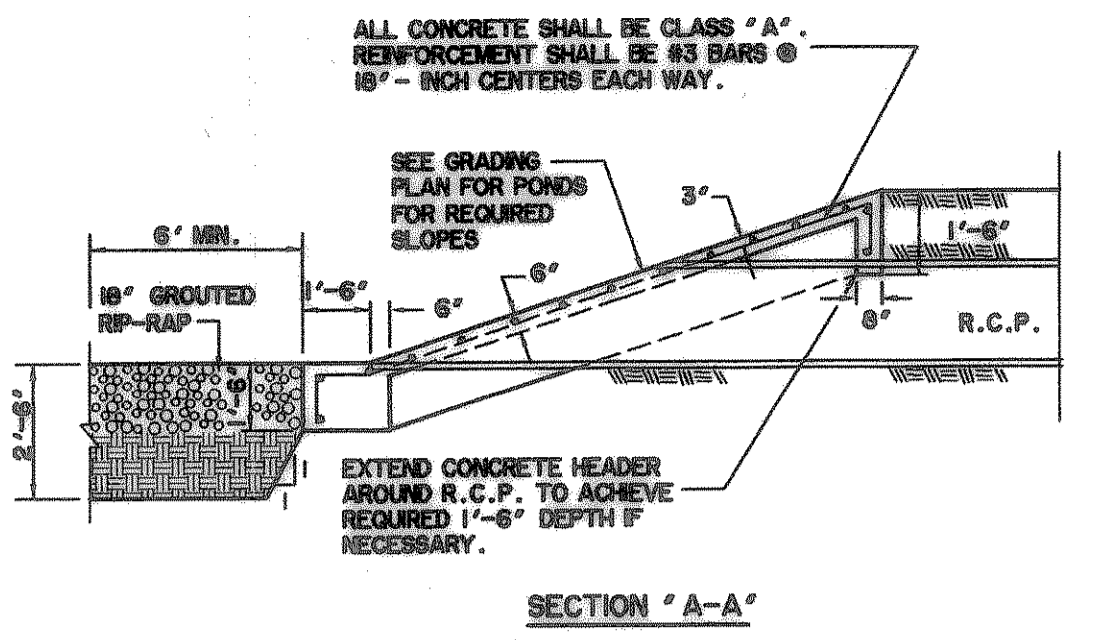


**JOINT SEALANT DETAIL No. 2  
SEAL FOR SAWED,  
CONSTRUCTION & BUTT JOINT**  
N.T.S.

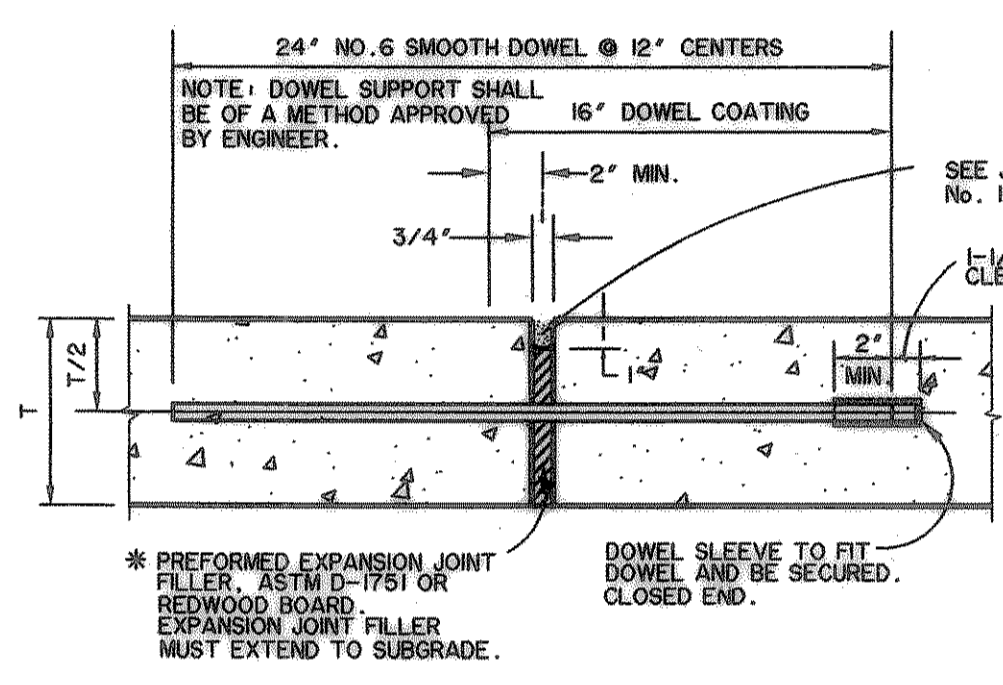
- JOINT NOTES:**  
T = PAVEMENT THICKNESS
1. DOWEL BARS PLACED INTO EXISTING PAVEMENT SHALL BE DRILLED INTO PAVEMENT HORIZONTALLY BY USE OF A MECHANICAL RIG. DRILLING BY HAND IS NOT ACCEPTABLE. PUSHING DOWEL BARS INTO GREEN CONCRETE IS NOT ACCEPTABLE. SECURE DOWEL BARS IN EXISTING PAVING WITH EPOXY GROUT.
  2. POLYETHYLENE FOAM BACKER ROD DOES NOT SIT ON BOTTOM OF SAW-CUT JOINT. PLACE AT DEPTH INDICATED IN DETAIL.
  3. IF SEALANT PROTRUDES ABOVE THE SURFACE OF THE PAVEMENT, IT MUST BE REMOVED AND REPLACED.
  4. SUBMIT MANUFACTURER'S LITERATURE FOR SEALANT, DOCUMENTING PRODUCT COMPLIES WITH ASTM SPECIFICATIONS AND PROVIDING MANUFACTURER'S RECOMMENDATIONS FOR APPLICATION. FOLLOW MANUFACTURER'S RECOMMENDATIONS ON USE OF THE PRODUCT.
  5. THE CONSTRUCTION JOINT IS TO BE USED BETWEEN SEPARATE POURS OF PROPOSED PAVEMENT. NOTE THAT IT REQUIRES THE REINFORCEMENT TO BE EXTENDED THROUGH THE FORM TO TIE TO THE NEXT POUR. THE BUTT JOINT IS TO BE USED BETWEEN EXISTING CONCRETE PAVEMENT (STREET OR DRIVEWAY) AND PROPOSED PAVEMENT. UNLESS AN EXPANSION JOINT IS CALLED FOR.



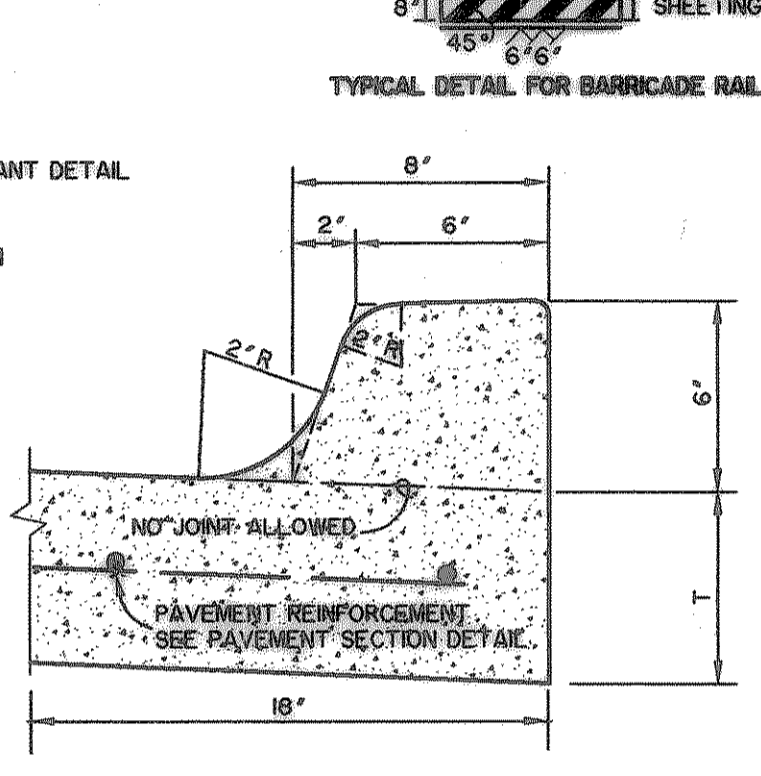
**MODIFIED SLOPING HEADWALL**  
N.T.S.



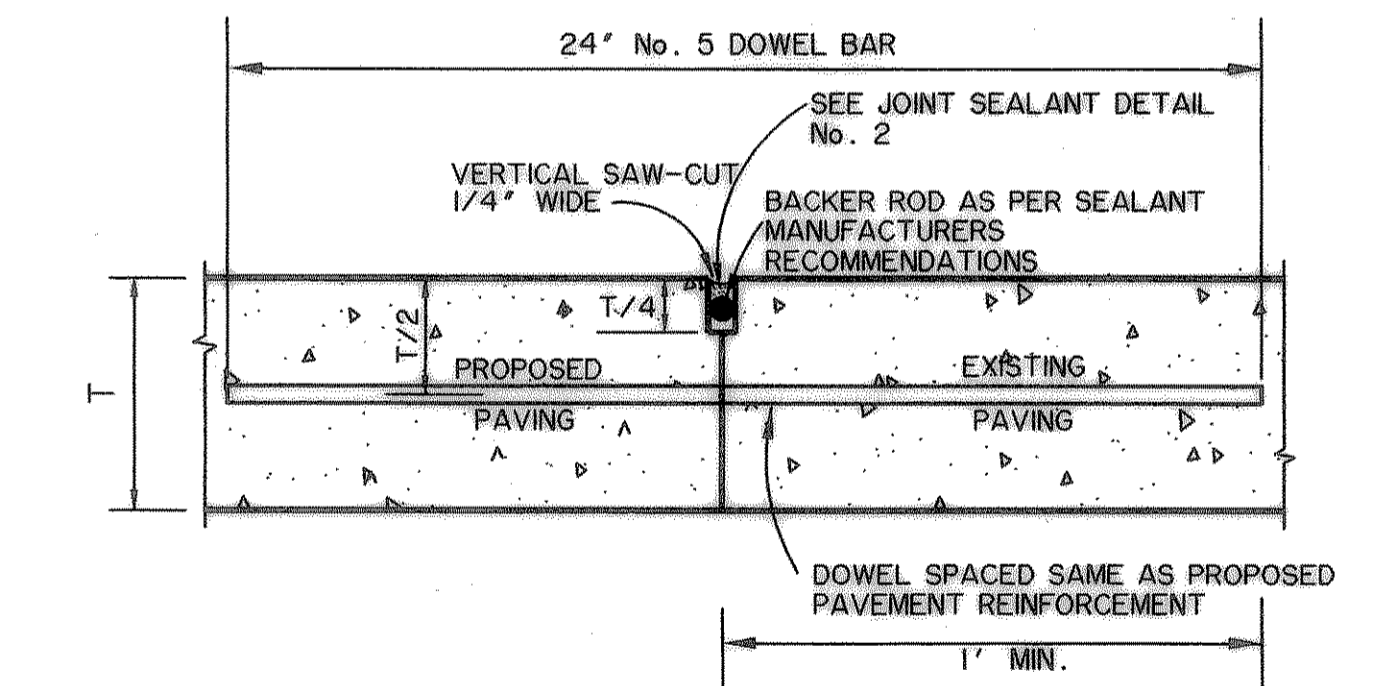
**SAWED CONTRACTION JOINT**  
N.T.S.



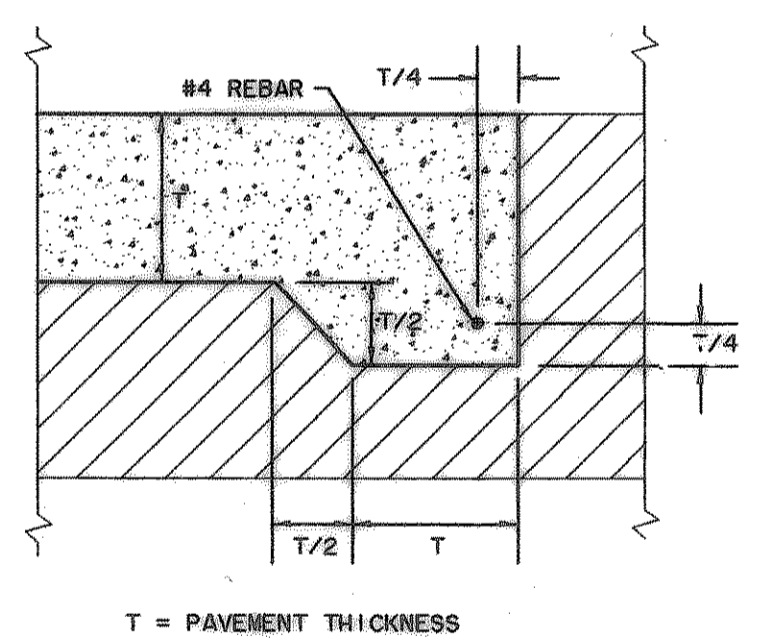
**EXPANSION JOINT**  
N.T.S.



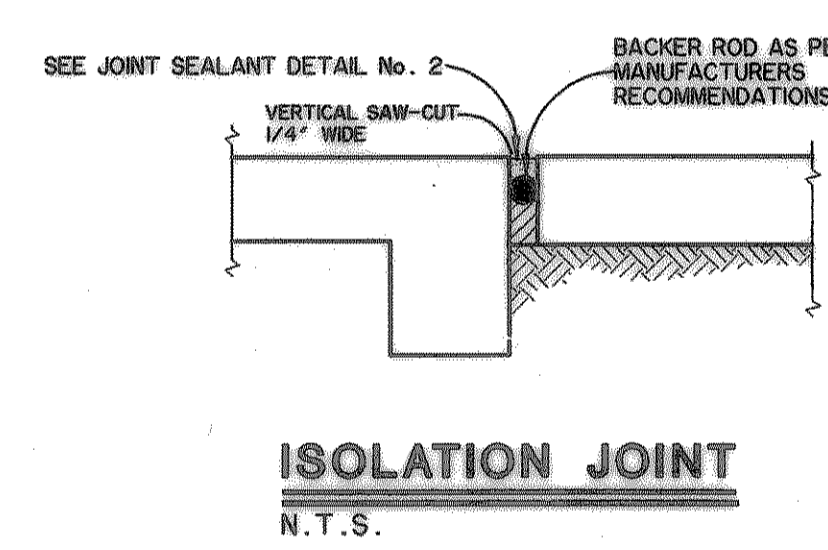
**STANDARD CURB**  
N.T.S.



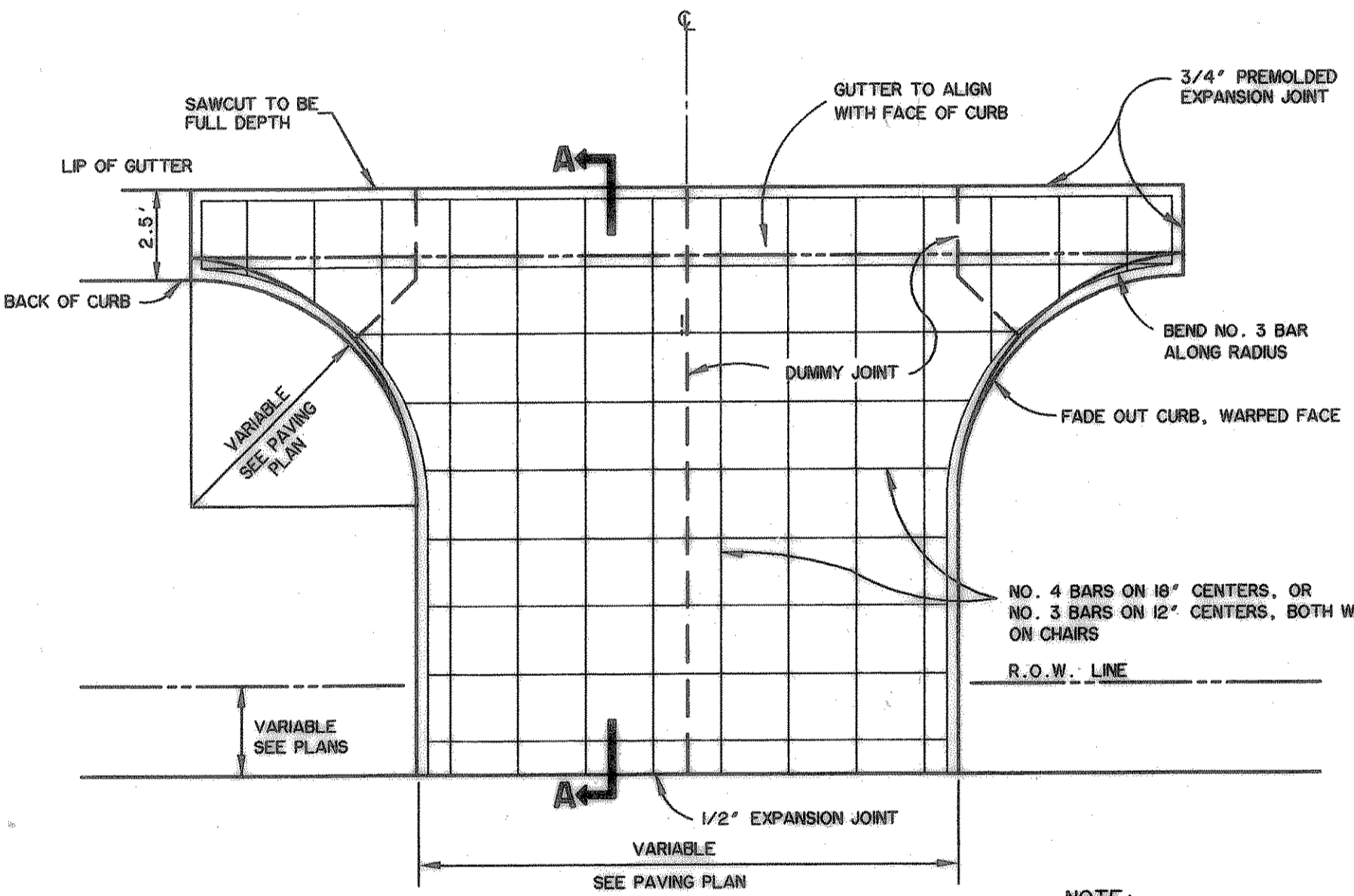
**BUTT JOINT**  
N.T.S.



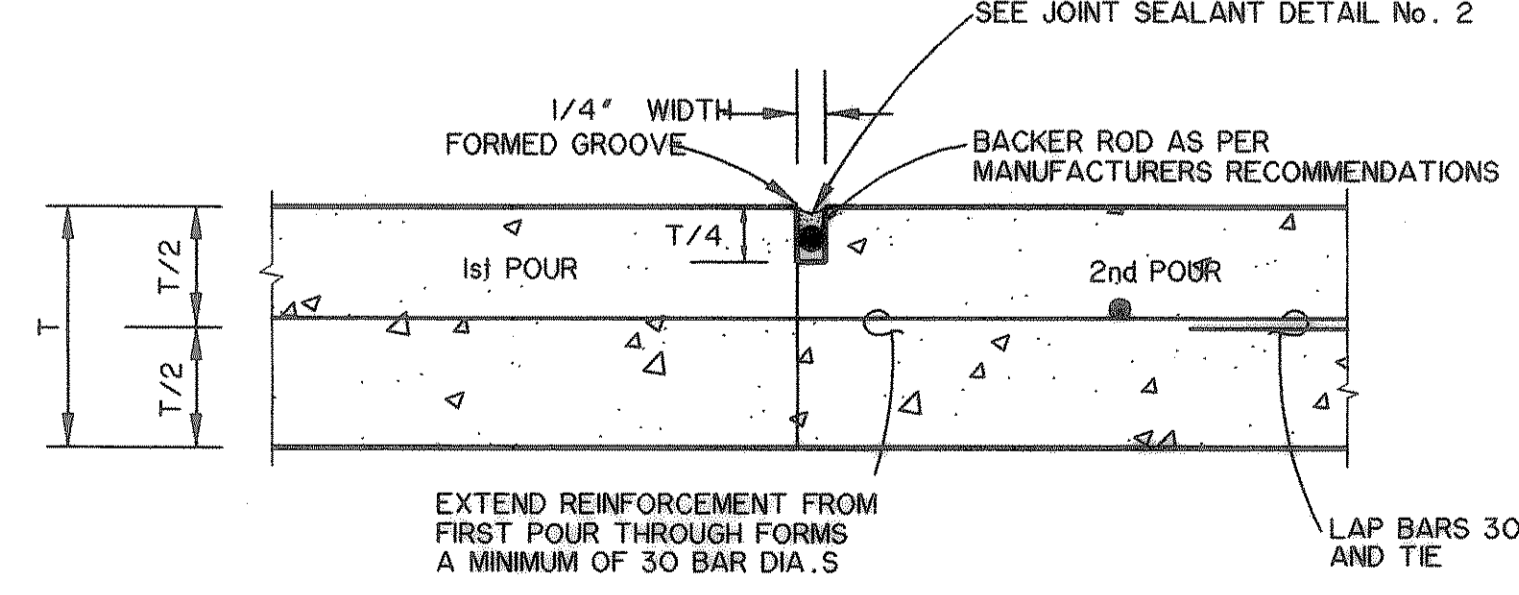
**THICKENED EDGE DETAIL**  
N.T.S.



**ISOLATION JOINT**  
N.T.S.

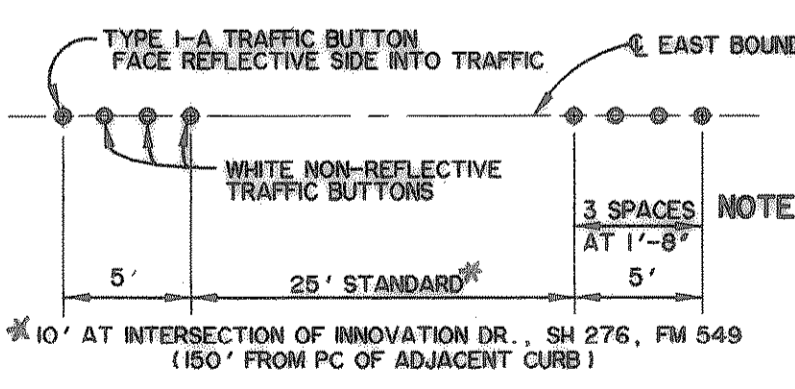


**TYPICAL DRIVE APPROACH**  
N.T.S.

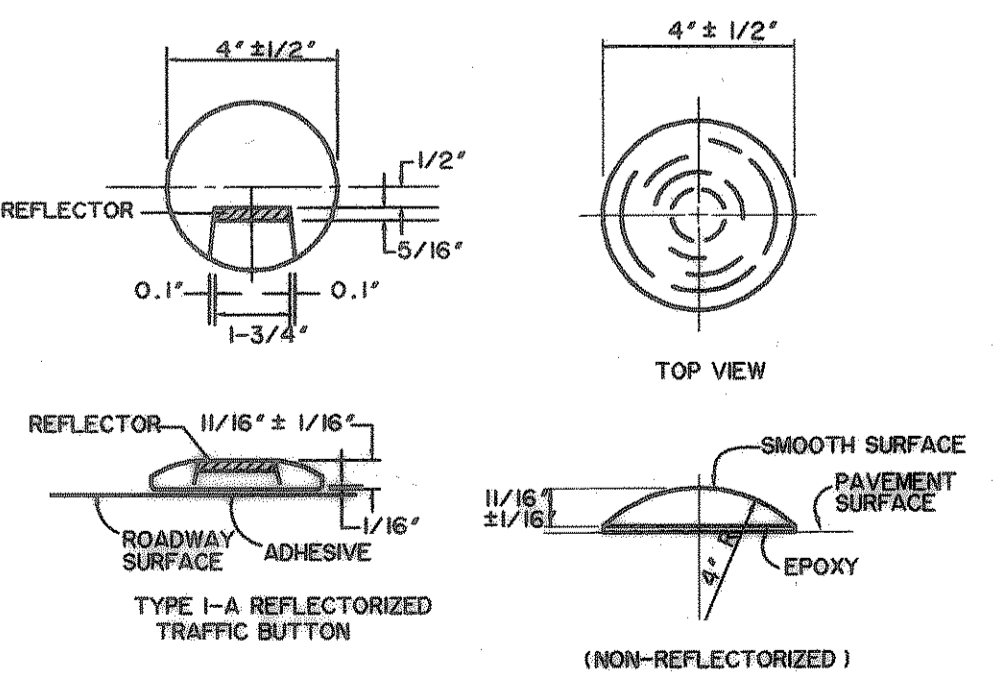


**CONSTRUCTION JOINT**  
N.T.S.

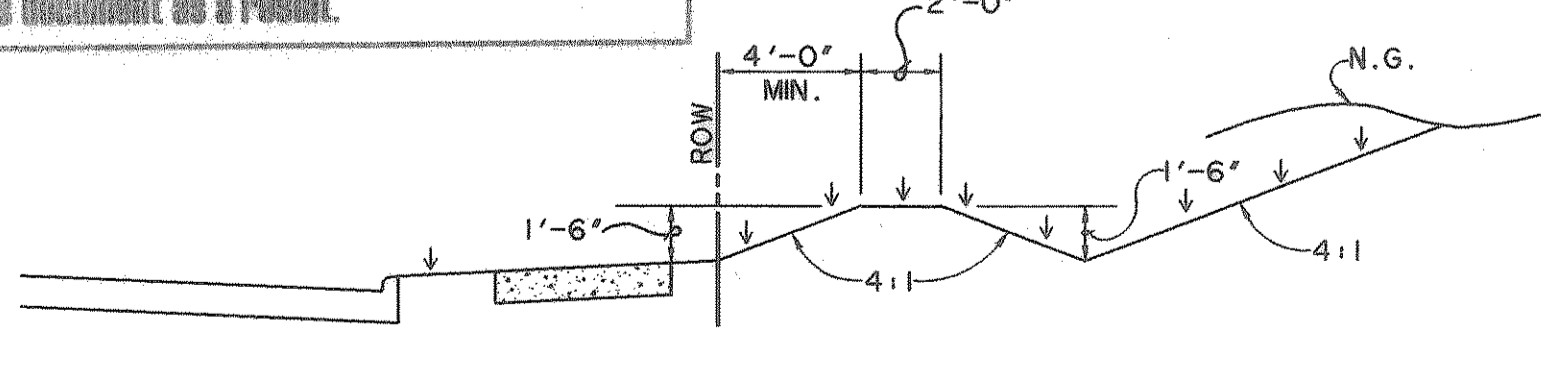
**RECORD DRAWINGS**  
These as-built or record drawings (or corrected specifications) have been prepared, in part, as the basis of information compiled and furnished by others. The Engineer will not be responsible for any errors or omissions which have been incorporated into this document as a result.



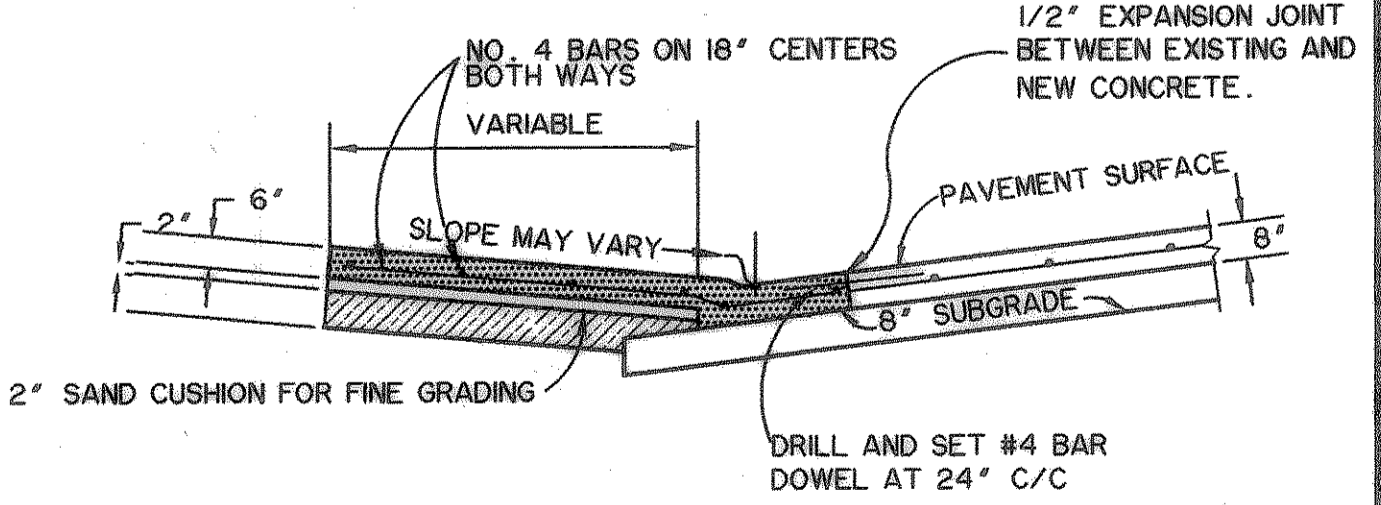
**TRAFFIC BUTTON DETAIL**  
N.T.S.



**TRAFFIC BUTTONS**  
N.T.S.

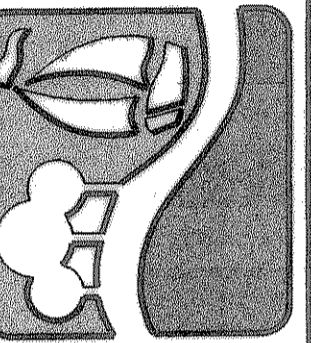


**TYPICAL SWALE DETAIL**  
N.T.S.



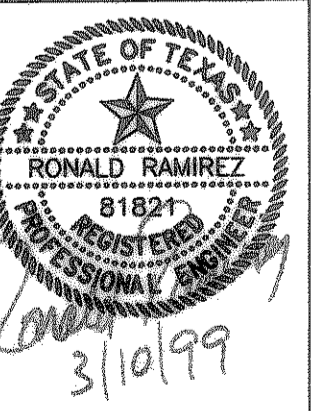
**DRIVE APPROACH DETAILS**  
N.T.S.

PREPARED BY:  
**WIER & ASSOCIATES, INC.**  
ENGINEERS SURVEYORS LAND PLANNERS  
4300 BELTWAY PLACE SUITE 130 ARLINGTON, TEXAS 76010 METRO (817)467-7700  
4105 AMON CANYON BLVD. SUITE 200 FORT WORTH, TEXAS 76116 METRO (817)355-9857



**ROCK WALL  
TECHNOLOGY  
PARK**

**PAVING DETAILS  
AND  
CURB DETAILS**



COPYRIGHT ©  
WIER & ASSOCIATES, INC.  
LAST SHEET EDIT  
DATE 03-08-99  
WAR 98041  
**SHEET NO.  
3-B**