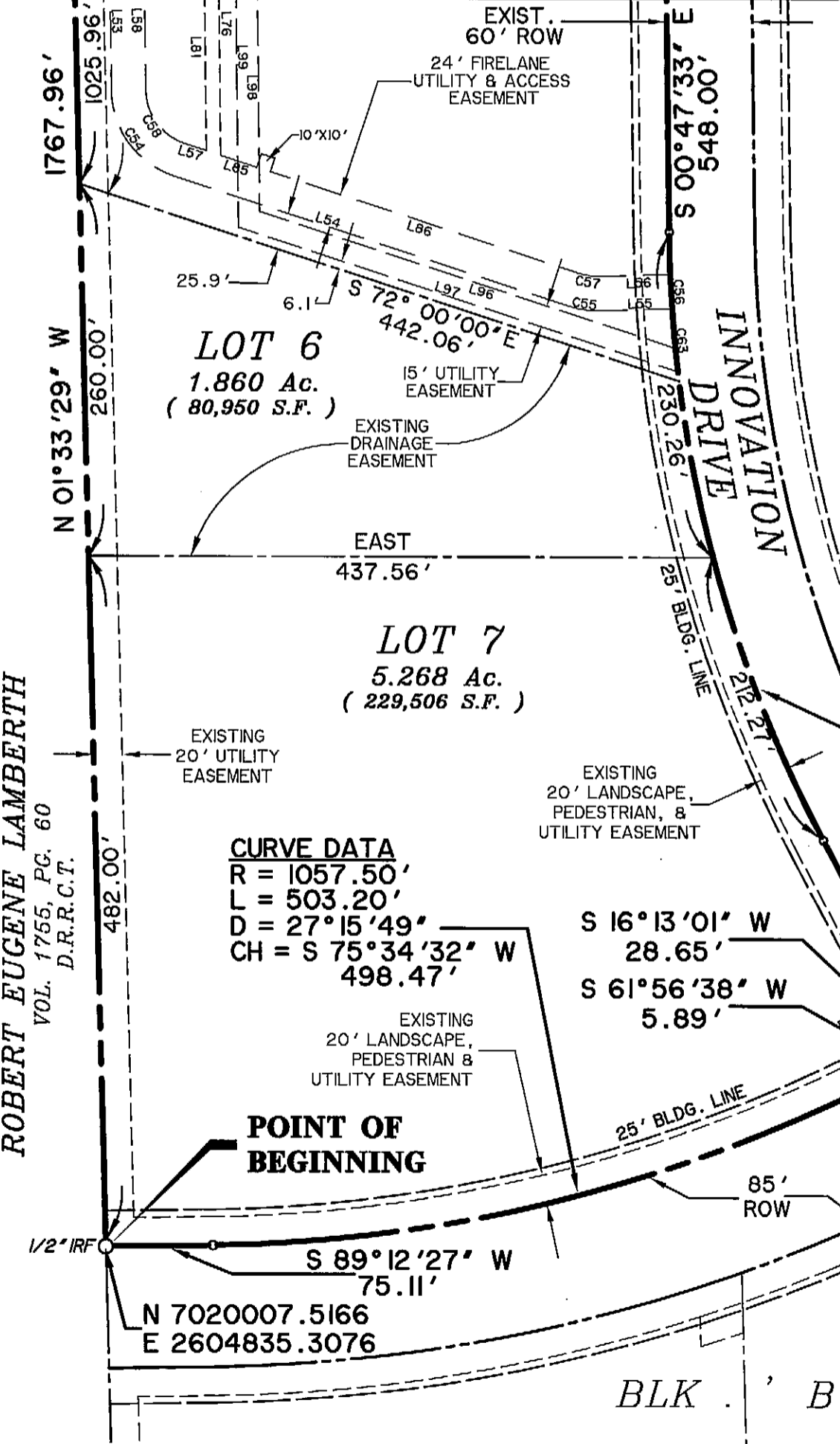


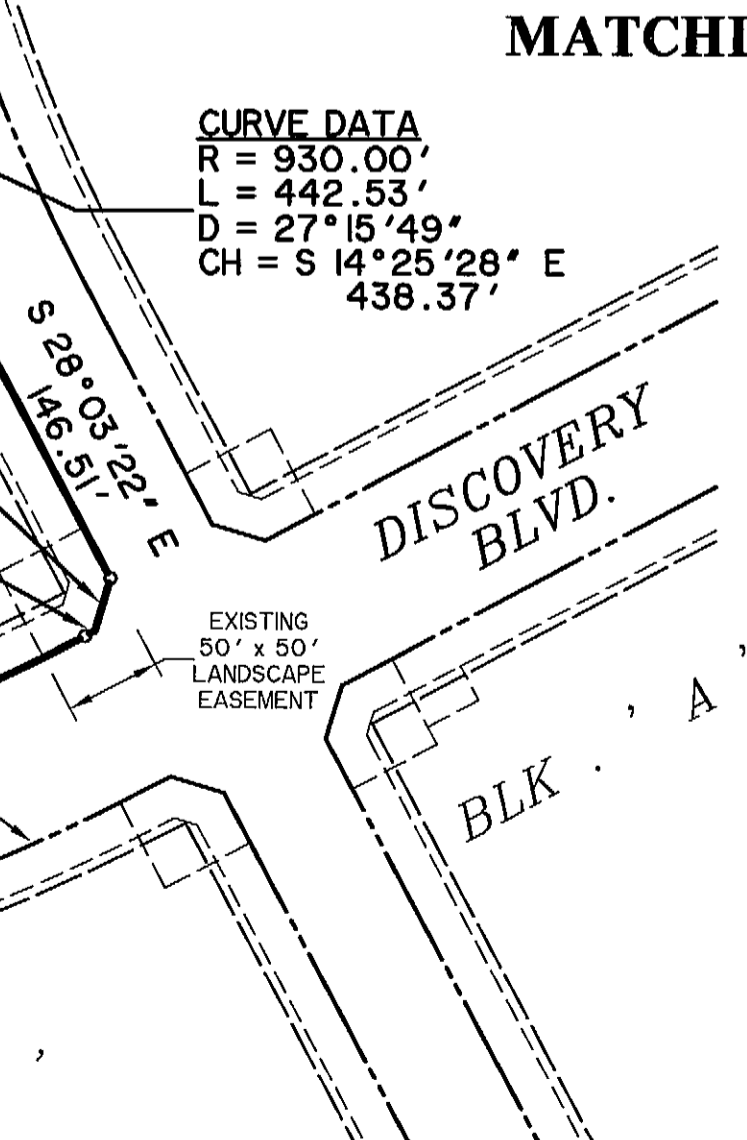
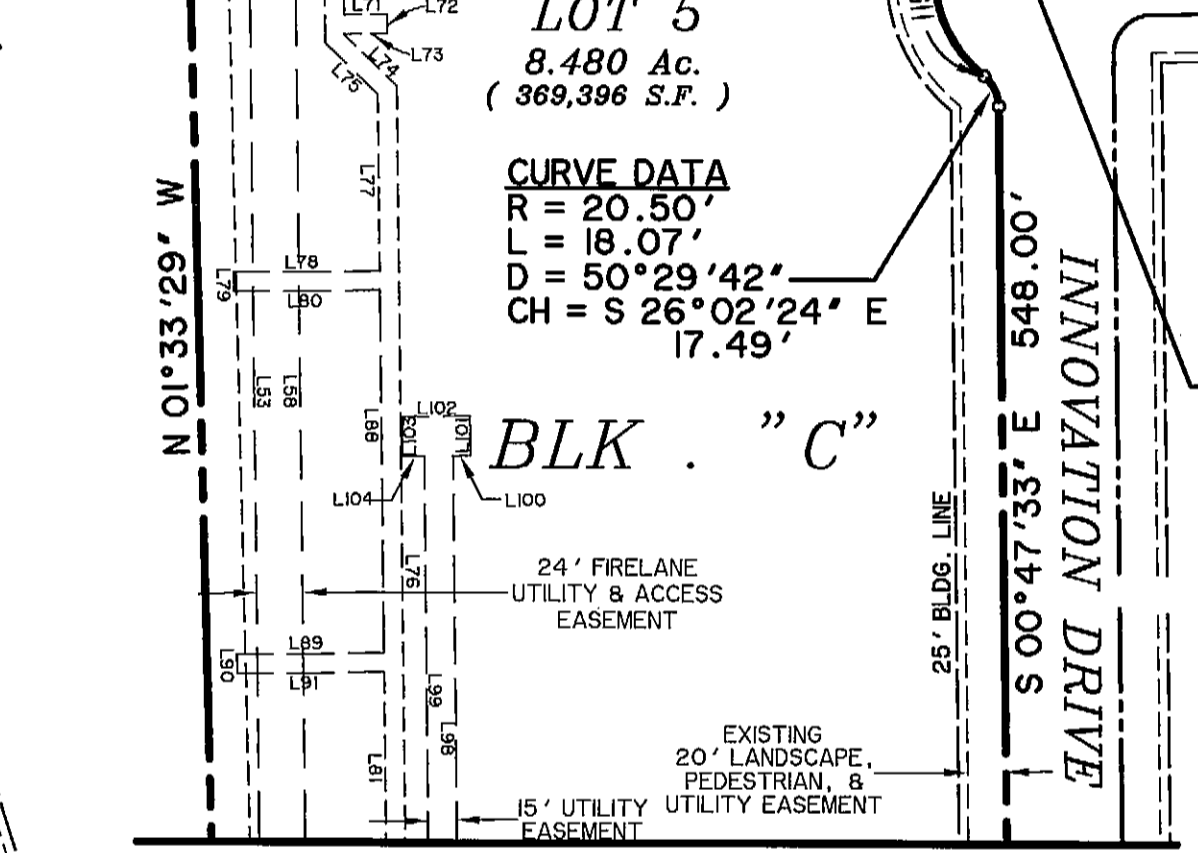
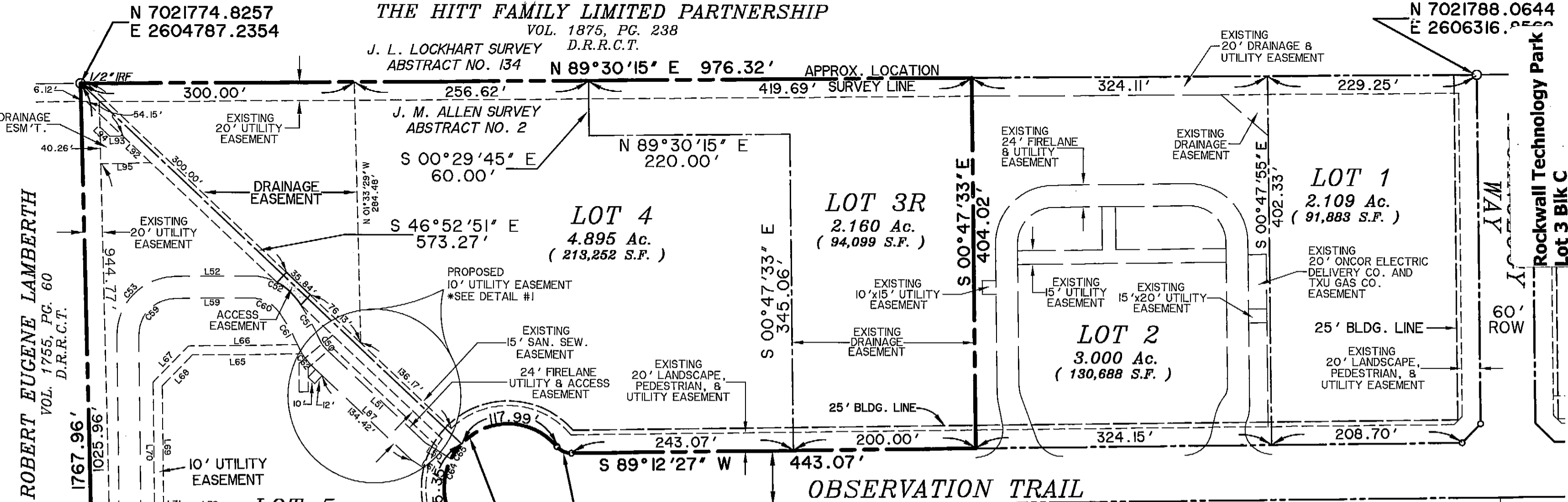
VICINITY MAP

**MATCHLINE**



**NOTE:**  
ALL MONUMENTS FOUND AND SET ARE 1/2" IRON RODS WITH CAPS STAMPED "WIER & ASSOC., INC." UNLESS OTHERWISE NOTED.  
THE PURPOSE OF THIS REPLAT IS TO SUBDIVIDE LOT 3, BLOCK 'C', CREATING LOTS 3R & 4-7.

**NOTE:**  
EXISTING EASEMENTS ON THIS REPLAT ARE RECORDED PER PLAT IN CABINET E, SLIDES 215 & 216 OF THE PLAT RECORDS, ROCKWALL COUNTY, TEXAS.



**NOTE:**  
EXISTING EASEMENTS ON THIS REPLAT ARE RECORDED PER PLAT IN CABINET E, SLIDES 215 & 216 OF THE PLAT RECORDS, ROCKWALL COUNTY, TEXAS.

THE HITT FAMILY LIMITED PARTNERSHIP  
VOL. 1875, PG. 238  
D.R.R.C.T.

J. L. LOCKHART SURVEY  
ABSTRACT NO. 134  
N 89°30'15" E 976.32' APPROX. LOCATION  
SURVEY LINE

J. M. ALLEN SURVEY  
ABSTRACT NO. 2  
S 00°29'45" E 60.00'  
N 89°30'15" E 220.00'

LOT 4  
4.895 Ac.  
(213,252 S.F.)  
S 46°52'51" E 573.27'

LOT 3R  
2.160 Ac.  
(94,099 S.F.)  
S 00°47'33" E 404.02'

LOT 2  
3.000 Ac.  
(130,688 S.F.)  
S 00°47'33" E 345.06'

LOT 5  
8.480 Ac.  
(369,396 S.F.)  
S 89°12'27" W 443.07'

LOT 6  
1.860 Ac.  
(80,950 S.F.)  
S 72°00'00" E 442.06'

LOT 7  
5.268 Ac.  
(229,506 S.F.)  
S 16°13'01" W 28.65'

LOT 8  
8.480 Ac.  
(369,396 S.F.)  
S 27°15'49" D = 27°15'49"  
CH = S 75°34'32" W 498.47'

LOT 9  
5.268 Ac.  
(229,506 S.F.)  
S 61°56'38" W 5.89'

LOT 10  
8.480 Ac.  
(369,396 S.F.)  
S 28°03'22" E 146.51'

LOT 11  
8.480 Ac.  
(369,396 S.F.)  
S 27°15'49" D = 27°15'49"  
CH = S 14°25'28" E 438.37'

LOT 12  
8.480 Ac.  
(369,396 S.F.)  
S 27°15'49" D = 27°15'49"  
CH = S 14°25'28" E 438.37'

LOT 13  
8.480 Ac.  
(369,396 S.F.)  
S 27°15'49" D = 27°15'49"  
CH = S 14°25'28" E 438.37'

LOT 14  
8.480 Ac.  
(369,396 S.F.)  
S 27°15'49" D = 27°15'49"  
CH = S 14°25'28" E 438.37'

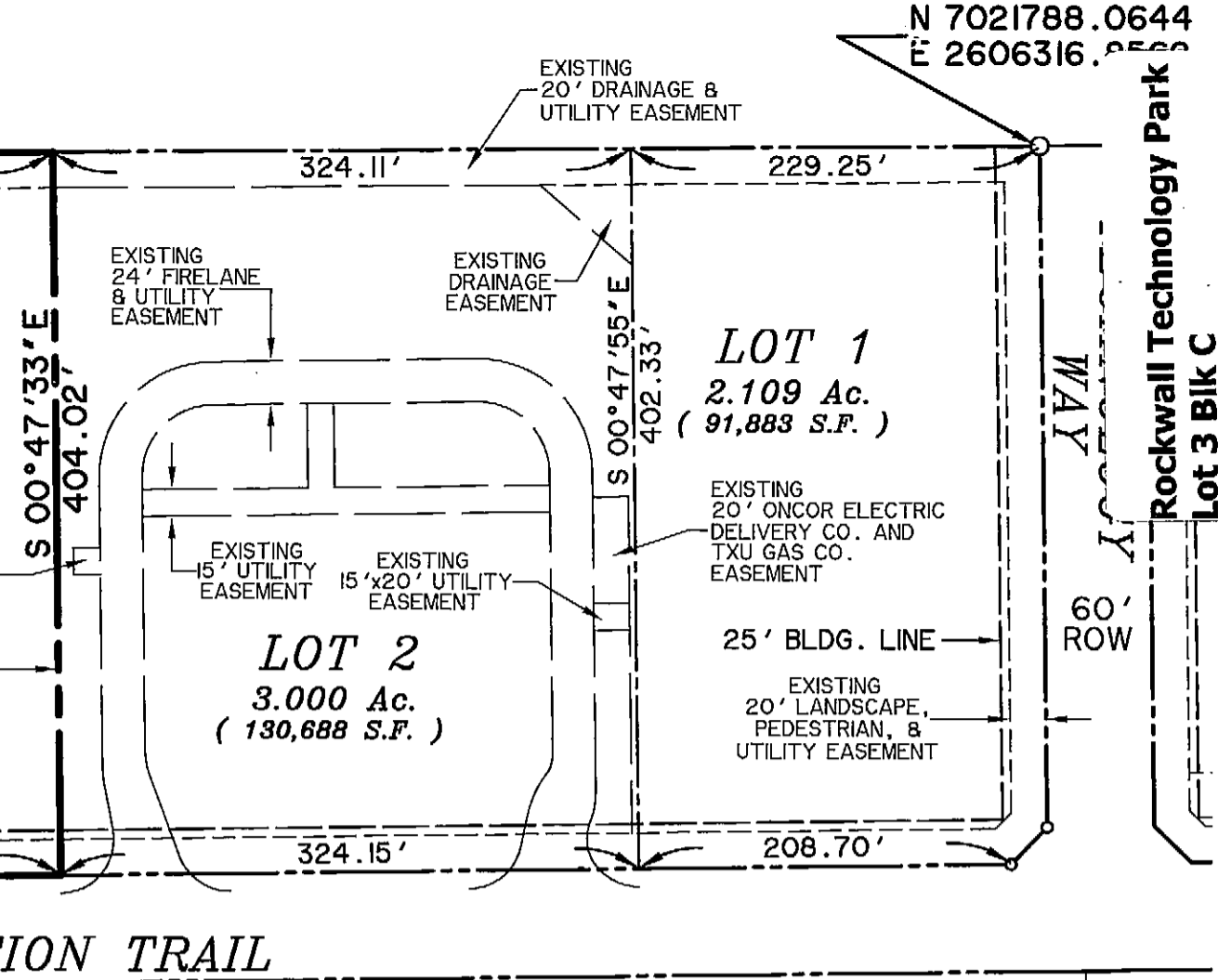
LOT 15  
8.480 Ac.  
(369,396 S.F.)  
S 27°15'49" D = 27°15'49"  
CH = S 14°25'28" E 438.37'

LOT 16  
8.480 Ac.  
(369,396 S.F.)  
S 27°15'49" D = 27°15'49"  
CH = S 14°25'28" E 438.37'

LOT 17  
8.480 Ac.  
(369,396 S.F.)  
S 27°15'49" D = 27°15'49"  
CH = S 14°25'28" E 438.37'

LOT 18  
8.480 Ac.  
(369,396 S.F.)  
S 27°15'49" D = 27°15'49"  
CH = S 14°25'28" E 438.37'

LOT 19  
8.480 Ac.  
(369,396 S.F.)  
S 27°15'49" D = 27°15'49"  
CH = S 14°25'28" E 438.37'



LOT 1  
2.109 Ac.  
(91,883 S.F.)  
S 00°47'55" E 402.33'

LOT 2  
3.000 Ac.  
(130,688 S.F.)  
S 00°47'33" E 345.06'

LOT 3R  
2.160 Ac.  
(94,099 S.F.)  
S 00°47'33" E 404.02'

LOT 4  
4.895 Ac.  
(213,252 S.F.)  
S 46°52'51" E 573.27'

LOT 5  
8.480 Ac.  
(369,396 S.F.)  
S 89°12'27" W 443.07'

LOT 6  
1.860 Ac.  
(80,950 S.F.)  
S 72°00'00" E 442.06'

LOT 7  
5.268 Ac.  
(229,506 S.F.)  
S 16°13'01" W 28.65'

LOT 8  
8.480 Ac.  
(369,396 S.F.)  
S 27°15'49" D = 27°15'49"  
CH = S 75°34'32" W 498.47'

LOT 9  
5.268 Ac.  
(229,506 S.F.)  
S 61°56'38" W 5.89'

LOT 10  
8.480 Ac.  
(369,396 S.F.)  
S 28°03'22" E 146.51'

LOT 11  
8.480 Ac.  
(369,396 S.F.)  
S 27°15'49" D = 27°15'49"  
CH = S 14°25'28" E 438.37'

LOT 12  
8.480 Ac.  
(369,396 S.F.)  
S 27°15'49" D = 27°15'49"  
CH = S 14°25'28" E 438.37'

LOT 13  
8.480 Ac.  
(369,396 S.F.)  
S 27°15'49" D = 27°15'49"  
CH = S 14°25'28" E 438.37'

LOT 14  
8.480 Ac.  
(369,396 S.F.)  
S 27°15'49" D = 27°15'49"  
CH = S 14°25'28" E 438.37'

**CURVE DATA**  
R = 20.50'  
L = 18.07'  
D = 50°29'42"  
CH = N 65°32'42" W 17.49'

**CURVE DATA**  
R = 70.00'  
L = 233.34'  
D = 190°59'25"  
CH = S 44°12'27" W 139.36'

**CURVE DATA**  
R = 930.00'  
L = 442.53'  
D = 27°15'49"  
CH = S 14°25'28" E 438.37'

**LINE TABLE**

LINE	LENGTH	BEARING	LINE	LENGTH	BEARING
L50	33.62'	S 58°05'01"E	L62	157.73'	S 46°49'55"E
L51	146.98'	S 46°52'51"E	L63	48.06'	N 50°03'00"E
L52	81.94'	N 89°12'27"E	L64	34.45'	S 50°03'00"W
L53	684.98'	N 00°47'33"W	L65	120.65'	S 89°12'26"W
L54	290.92'	N 72°00'00"W	L66	119.92'	S 89°12'26"W
L55	50.78'	N 88°26'31"E	L67	55.37'	S 44°12'26"W
L56	50.02'	N 88°26'31"E	L68	47.09'	S 44°12'26"W
L57	15.73'	S 72°00'00"E	L69	133.88'	S 00°47'34"E
L58	684.98'	N 00°47'33"W	L70	152.56'	S 00°47'34"E
L59	81.94'	N 89°12'27"E	L71	22.33'	S 89°12'26"W
L60	164.84'	S 46°49'55"E	L72	10.00'	S 00°47'33"E
L61	42.61'	S 58°05'01"E	L73	22.33'	S 89°12'26"W

**LINE TABLE (cont.)**

LINE	LENGTH	BEARING	LINE	LENGTH	BEARING
L74	38.18'	N 45°47'34"W	L96	306.55'	S 72°00'00"E
L75	38.18'	N 45°47'34"W	L97	324.08'	N 72°00'00"W
L76	504.88'	S 00°47'34"E	L98	352.26'	S 00°43'48"E
L77	91.76'	S 89°12'26"W	L99	363.02'	N 00°43'48"W
L78	75.96'	S 89°12'26"W	L100	8.93'	S 89°16'12"W
L79	10.00'	S 00°47'33"E	L101	20.33'	S 00°43'48"E
L80	75.96'	N 89°12'26"E	L102	35.50'	N 89°16'12"E
L81	197.02'	S 00°47'34"E	L103	20.33'	N 00°43'48"W
L82	31.13'	N 00°43'48"W	L104	11.57'	S 89°16'12"W
L83	26.38'	S 00°43'48"E			
L84	10.00'	S 89°16'12"W			
L85	26.72'	S 72°00'00"E			
L86	227.91'	S 72°00'00"E			
L87	149.33'	S 46°52'51"E			
L88	188.55'	S 00°47'34"E			
L89	76.50'	S 89°12'26"W			
L90	10.00'	S 00°47'33"E			
L91	76.50'	N 89°12'26"E			
L92	42.50'	S 46°49'55"E			
L93	14.30'	S 89°16'11"W			
L94	14.51'	S 46°43'49"E			
L95	54.78'	N 88°16'11"E			

**NOTE:**  
It shall be the policy of the City of Rockwall to withhold issuing building permits until all streets, water, sewer and storm drainage systems have been accepted by the City. The approval of a plat by the City does not constitute any representation, assurance or guarantee that any building within such plat shall be approved, authorized or permit therefore issued, nor shall such approval constitute any representation, assurance or guarantee by the City of the adequacy and availability for water for personal use and fire protection within such plat, as required under Ordinance 83-54.

**CURVE TABLE**

CURVE	RADIUS	DELTA	ARC	CHORD	BEARING
C50	40.00	23°00'03"	16.06	15.95	S35°22'50"E
C51	241.01	11°06'38"	46.74	46.66	N29°26'07"W
C52	64.00	55°48'07"	62.33	59.90	N62°53'30"W
C53	64.00	90°00'00"	100.53	90.51	S44°12'27"W
C54	64.00	71°12'27"	79.54	74.52	S36°23'46"E
C55	64.00	19°33'29"	21.85	21.74	S81°46'44"E
C56	930.00	1°28'46"	24.01	24.01	S03°21'37"E
C57	40.00	19°33'29"	13.65	13.59	S81°46'44"E
C58	40.00	71°12'27"	49.71	46.57	S36°23'46"E
C59	40.00	90°00'00"	62.83	56.57	S44°12'27"W
C60	40.00	55°48'07"	38.96	37.44	N62°53'30"W
C61	217.01	10°23'00"	39.33	39.27	N29°26'07"W
C62	64.00	15°29'54"	17.31	17.26	S39°07'54"E
C63	930.00	3°07'54"	50.83	50.83	S05°39'57"E
C64	70.00	20°29'26"	25.03	24.90	S16°27'27"W
C65	70.00	16°25'33"	20.07	20.00	S34°54'57"W

**OWNER:**  
ROCKWALL ECONOMIC DEVELOPMENT CORPORATION  
697 E. INTERSTATE 30  
ROCKWALL, TEXAS 75087-0968  
(972) 772-0025

**LINE TABLE (cont.)**

LINE	LENGTH	BEARING	LINE	LENGTH	BEARING
L96	306.55'	S 72°00'00"E			
L97	324.08'	N 72°00'00"W			
L98	352.26'	S 00°43'48"E			
L99	363.02'	N 00°43'48"W			
L100	8.93'	S 89°16'12"W			
L101	20.33'	S 00°43'48"E			
L102	35.50'	N 89°16'12"E			
L103	20.33'	N 00°43'48"W			
L104	11.57'	S 89°16'12"W			

REPLAT OF  
LOT 3  
BLOCK C  
**ROCKWALL TECHNOLOGY PARK**  
BEING 22.663 ACRES OF LAND SITUATED IN  
THE J.M. ALLEN SURVEY, ABSTRACT NO. 2,  
CITY OF ROCKWALL, ROCKWALL COUNTY, TEXAS.

PREPARED BY:  
**WIA WIER & ASSOCIATES, INC.**  
**ENGINEERS SURVEYORS LAND PLANNERS**  
4300 BELTWAY PLACE SUITE 130 ARLINGTON, TEXAS 76018 METRO (817)467-7700  
4108 AMON CARTER BLVD. SUITE 200 FORT WORTH, TEXAS 76155 (817)355-9437  
DATE: 05-27-2003  
FILE: Replat-C-LOT4-1.dwg  
W.A. No. 98041  
SHEET 1 OF 2

FILED FOR RECORD  
ROCKWALL COUNTY, TEXAS  
03 JUN 11 PM 1:59  
LAURETTE BURKS  
CO. CLERK  
DEPUTY

E-311-312