

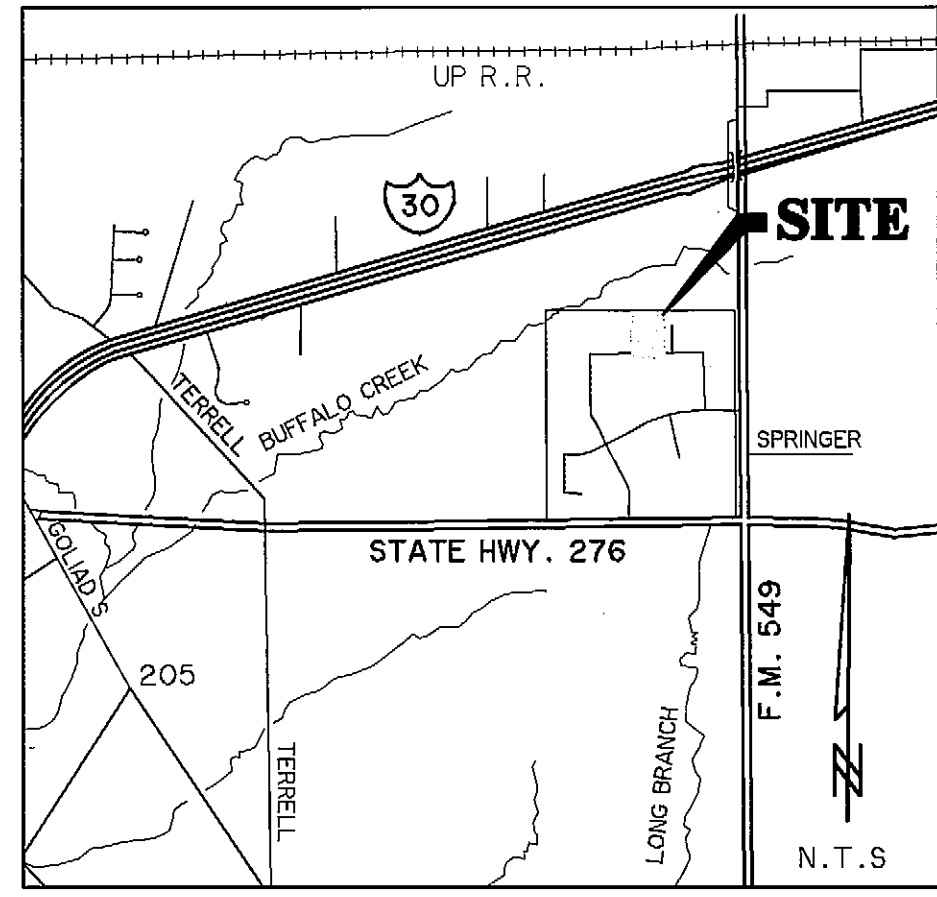
FILED FOR RECORD
ROCKWALL COUNTY, TEXAS
02 JUL 31 AM 11:09

N 7021774.8257
E 2604787.2354

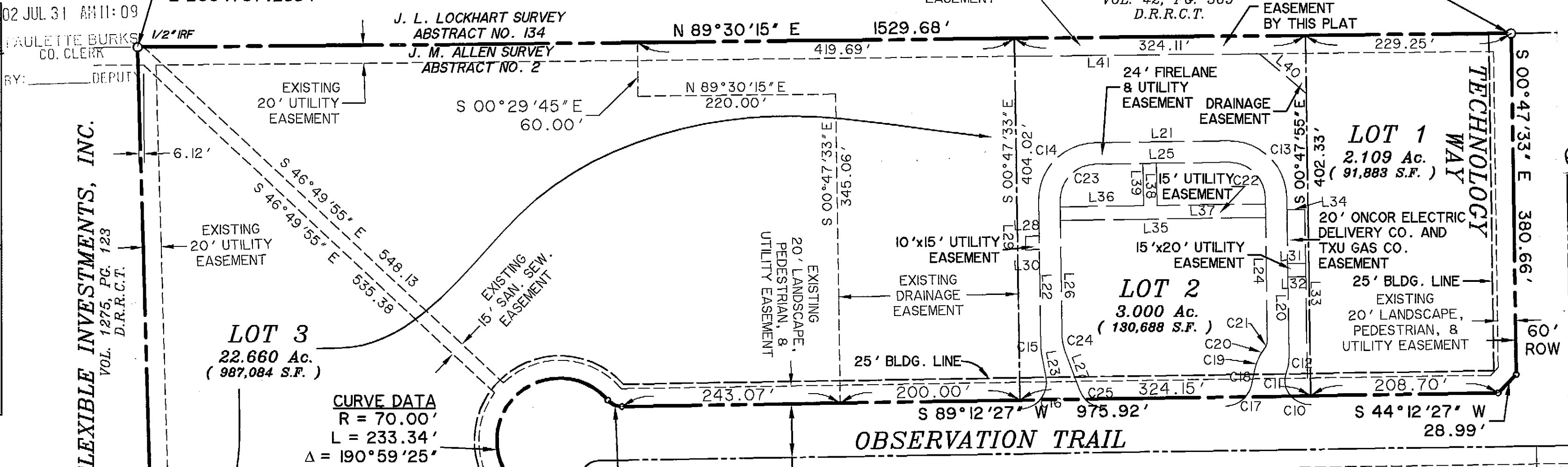
EXISTING
20' UTILITY
EASEMENT

F. D. HITT
VOL. 42, PG. 569
D.R.R.C.T.

N 7021788.01
E 2606316.81



VICINITY MAP



LOT 3
22.660 Ac.
(987,084 S.F.)

LOT 2
3.000 Ac.
(130,688 S.F.)

LOT 1
2.109 Ac.
(91,888 S.F.)

CURVE DATA
R = 70.00'
L = 233.34'
Δ = 190°59'25"
CH = S 44°12'27" W
CL = 139.36'

CURVE DATA
R = 20.50'
L = 18.07'
Δ = 50°29'42"
CH = S 26°02'24" E
CL = 17.49'

CURVE DATA
R = 20.50'
L = 18.07'
Δ = 50°29'42"
CH = N65°32'42" W
CL = 17.49'

BLK. 'C'
27.770 Ac.
(1,209,661 S.F.)

MATCHLINE

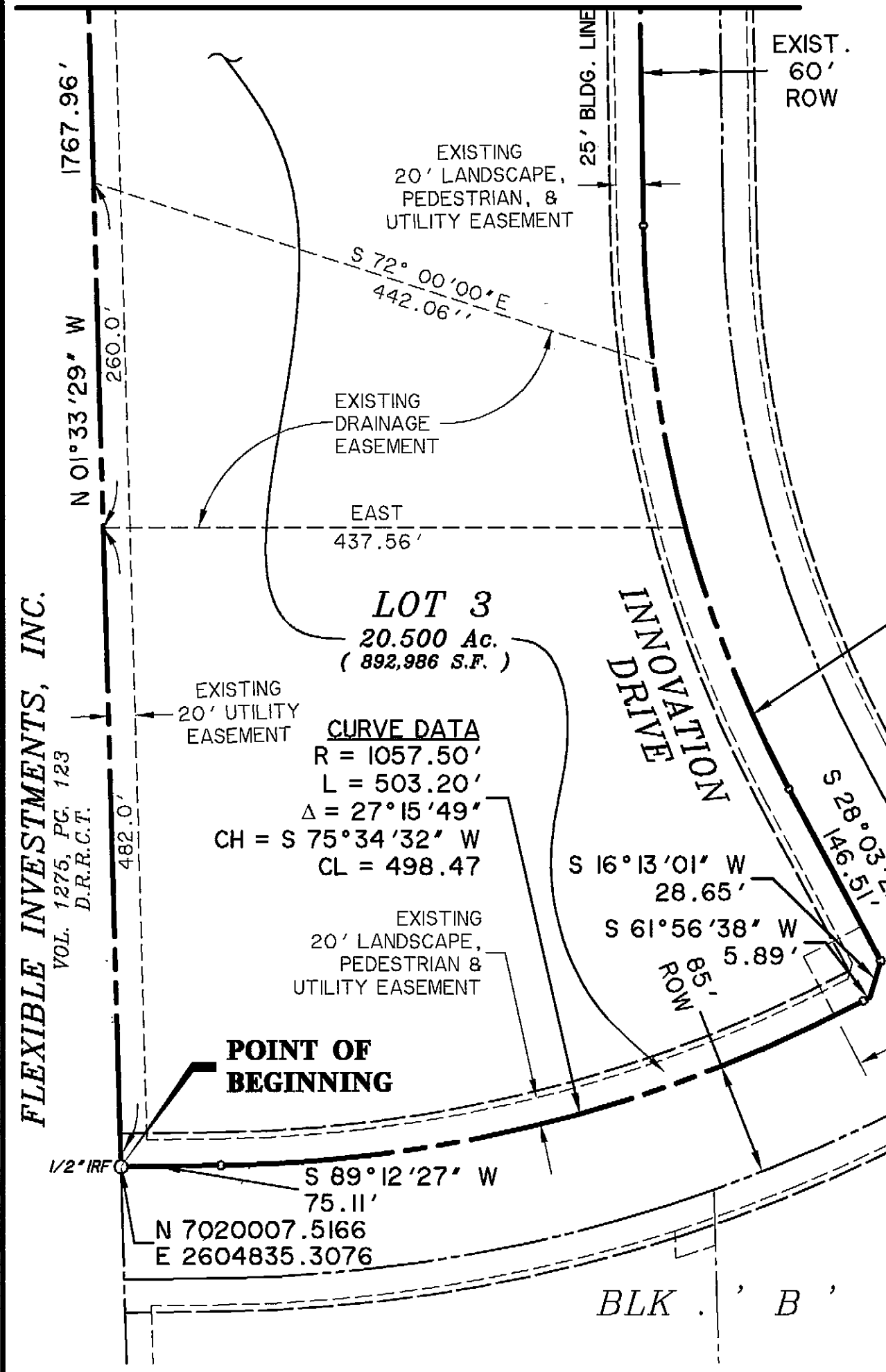
MATCHLINE

LINE TABLE

LINE	LENGTH	BEARING
L20	177.83	S00°47'40"E
L21	148.50	N89°12'20"E
L22	163.18	N00°47'40"W
L23	26.86	N10°59'08"W
L24	158.74	S00°47'40"E
L25	148.50	N89°12'20"E
L26	153.07	N00°47'40"W
L27	48.38	N20°26'56"W
L28	15.00	N89°12'20"E
L29	15.00	N00°47'40"W
L30	15.00	S89°12'20"W
L31	20.00	N89°12'20"E
L32	20.00	N89°12'20"E
L33	188.14	S00°47'40"E
L34	19.50	N89°12'20"E
L35	228.50	N89°12'01"E
L36	92.89	N89°12'01"E
L37	120.61	N89°12'01"E
L38	46.99	S00°47'59"E
L39	46.99	S00°47'59"E
L40	68.36	S49°27'23"E
L41	272.79	N89°30'15"E

CURVE TABLE

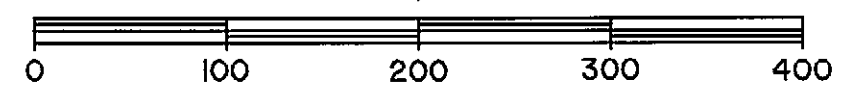
CURVE	LENGTH	RADIUS	DELTA	CHORD BEARING	CHORD DISTANCE
C10	25.22	30.00	48°09'49"	S66°43'00"E	24.48
C11	27.64	25.00	63°21'24"	S10°57'23"E	26.26
C12	18.78	50.00	21°30'59"	N09°57'49"E	18.67
C13	100.53	64.00	90°00'00"	N45°47'40"W	90.51
C14	100.53	64.00	90°00'00"	S44°12'20"W	90.51
C15	7.11	40.00	10°11'29"	S05°53'24"E	7.11
C16	52.46	30.00	100°11'35"	N39°06'39"E	46.03
C17	39.85	30.00	76°06'48"	N51°08'56"E	36.99
C18	16.67	4558.21	0°12'34"	S11°10'18"W	16.67
C19	17.65	60.75	16°38'45"	S19°35'58"W	17.59
C20	10.01	58.72	9°46'17"	S32°48'29"W	10.00
C21	10.08	15.00	38°29'17"	N18°26'59"E	9.89
C22	62.83	40.00	90°00'00"	N45°47'40"W	56.57
C23	62.83	40.00	90°00'00"	S44°12'20"W	56.57
C24	13.72	40.00	19°39'16"	S10°37'18"E	13.65
C25	36.83	30.00	70°20'44"	S55°37'18"E	34.56



LOT 3
20.500 Ac.
(892,986 S.F.)

CURVE DATA
R = 1057.50'
L = 503.20'
Δ = 27°15'49"
CH = S 75°34'32" W
CL = 498.47

CURVE DATA
R = 930.00'
L = 442.53'
Δ = 27°15'49"
CH = S 14°25'28" E
CL = 438.37'



NOTE:

It shall be the policy of the City of Rockwall to withhold issuing building permits until all streets, water, sewer and storm drainage systems have been accepted by the City. The approval of a plat by the City does not constitute any representation, assurance or guarantee that any building within such plat shall be approved, authorized or permit therefore issued, nor shall such approval constitute any representation, assurance or guarantee by the City of the adequacy and availability for water for personal use and fire protection within such plat, as required under Ordinance 83-54.

NOTE:

EXISTING EASEMENTS, OTHER THAN TXU EASEMENTS, SHOWN ON THIS REPLAT ARE RECORDED PER PLAT IN CABINET D, SLIDES 175 AND 176 OF THE PLAT RECORDS, ROCKWALL COUNTY, TEXAS.

OWNER:

ROCKWALL ECONOMIC
DEVELOPMENT CORPORATION
697 E. INTERSTATE 30
ROCKWALL, TEXAS 75087-0968
(972) 772-0025

NOTE:

ALL MONUMENTS FOUND AND SET ARE 1/2" IRON RODS WITH CAPS STAMPED "WIER & ASSOC., INC." UNLESS OTHERWISE NOTED.

THE PURPOSE OF THIS DOCUMENT IS TO SUBDIVIDE BLOCK 'C'.

THE PURPOSE OF THIS AMENDED REPLAT IS TO CHANGE THE NAME OF THE RECORDED UTILITY EASEMENT FOR LOT 2, BLOCK C TO "20' ONCOR ELECTRIC DELIVERY CO. AND TXU GAS CO. EASEMENT."

AMENDED REPLAT OF
LOTS 1, 2 AND 3
BLOCK C
**ROCKWALL
TECHNOLOGY PARK**
BEING 27.770 ACRES OF LAND SITUATED IN
THE J.M. ALLEN SURVEY, ABSTRACT NO. 2,
CITY OF ROCKWALL, ROCKWALL COUNTY, TEXAS.

PREPARED BY:
WIA WIER & ASSOCIATES, INC.
ENGINEERS SURVEYORS LAND PLANNERS
4300 BELTWAY PLACE SUITE 130 ARLINGTON, TEXAS 76018 METRO (817)467-7700
4108 AMON CARTER BLVD. SUITE 200 FORT WORTH, TEXAS 76155 (817)355-9437

DATE: 06-27-2002
FILE: Replat-C-1.dwg
W.A. No. 98041