

NOTE:
REFER TO SHEET C4.1
FOR GRADING & DRAINAGE
GENERAL NOTES.

!!! WARNING !!!
EXISTING OVERHEAD/UNDERGROUND
TELEPHONE, ELECTRIC AND UNDERGROUND
GAS AND FIBER OPTIC UTILITIES IN THE AREA.
CONTACT UTILITY COMPANIES 48 HOURS PRIOR
TO CONSTRUCTION AT 1-800-DIG-TESS.

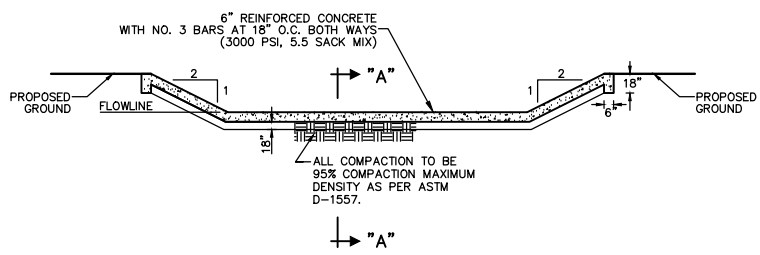
0 20 40 80 120
GRAPHIC SCALE IN FEET

LEGEND

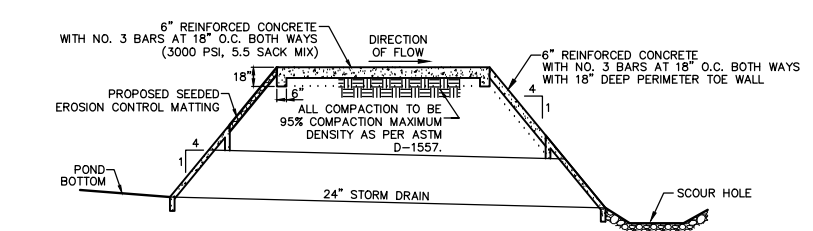
- B₄ BOLLARD
- EM₁₀ ELECTRIC METER
- PP₁₀ POWER POLE
- LS₁₀ LIGHT STANDARD
- WM₁₀ WATER METER
- WV₁₀ WATER VALVE
- ICV₁₀ IRRIGATION CONTROL VALVE
- FH₁₀ FIRE HYDRANT
- CO₁₀ CLEANOUT
- MH₁₀ MANHOLE
- TSC₁₀ TRAFFIC SIGNAL CONTROL
- TSP₁₀ TRAFFIC SIGNAL POLE
- TELE₁₀ TELEPHONE BOX
- FL₁₀ FLOOD LIGHT
- FP₁₀ FLAG POLE
- SIGN₁₀ TRAFFIC SIGN
- IRS 1/2-INCH IRON ROD
- W/PACHECO KOCH₁₀ CAP SET
- (C.M.) CONTROLLING MONUMENT
- PROPERTY LINE
- FENCE
- OHL OVERHEAD UTILITY LINE
- E UNDERGROUND ELECTRIC LINE
- T UNDERGROUND TELEPHONE LINE
- C UNDERGROUND CABLE LINE
- 6"W UNDERGROUND WATER LINE
- 6"SS UNDERGROUND SANITARY SEWER LINE

BENCH MARK LIST

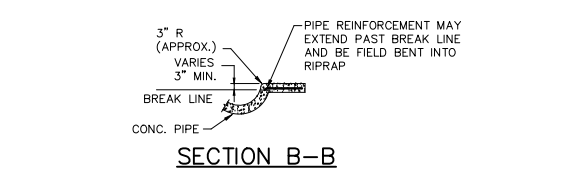
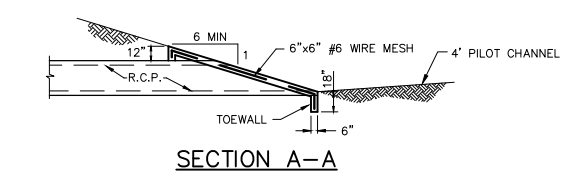
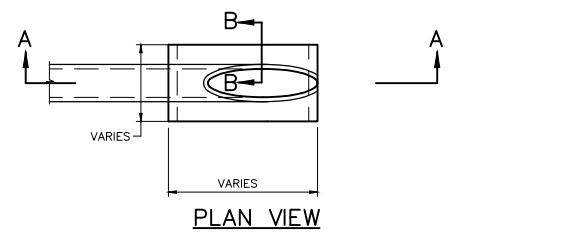
CITY BM #	DESCRIPTION	ELEVATION
#19	CITY OF ROCKWALL MONUMENT FOUND AT THE NORTHWEST INTERSECTION OF DIAMOND WAY AND SILVER VIEW.	600.687
BM # 2	" CUT SET ON 1314'± EAST OF CORPORATE CROSSING AND DISCOVERY BLVD. ON THE NORTHEAST CORNER OF CURB INLET ON NORTH SIDE OF DISCOVERY BLVD., 100'± NORTHEAST OF FH W/YELLOW TOP AND 145'± NORTHWEST OF A LIGHT STANDARD.	603.50
BM # 4	" CUT SET ON SOUTHEAST CORNER OF CURB INLET ON SOUTH SIDE OF DISCOVERY BLVD., 633'± WEST OF INTERSECTION OF DISCOVERY BLVD. AND DATA DRIVE, 48'± WEST OF A SANITARY SEWER MANHOLE AND 10'± NORTHEAST OF A WATER VALVE.	608.91
BM # 5	" CUT SET ON SOUTHEAST CORNER OF DISCOVERY BLVD. AND DATA DRIVE ON SIDEWALK AT RAMP, 20'± NORTHEAST OF STOP SIGN, 20'± SOUTHWEST OF THE END OF GUARD-RAIL AND 60'± SOUTHWEST OF A STORM SEWER MANHOLE IN CENTERLINE OF INTERSECTION.	600.46
BM # 7	" CUT SET AT THE NORTHEAST INTERSECTION OF DATA DRIVE AND CAPITAL BLVD. ON THE EAST CURB OF DATA DRIVE, 20'± EAST OF THE STORM SEWER MANHOLE IN CENTERLINE OF INTERSECTION AND 14'± SOUTH OF THE END OF A GUARD-RAIL.	603.52
BM # 8	" CUT SET ON EDGE OF CONCRETE ON THE NORTH SIDE OF CAPITAL BLVD., 900'± FROM INTERSECTION OF DATA DRIVE AND CAPITAL BLVD., 134'± NORTHEAST OF STORM SEWER MANHOLE ON CENTERLINE OF CAPITAL BLVD., AND 35'± NORTHWEST OF A FIRE HYDRANT W/ YELLOW TOP ON SOUTHSIDE OF CAPITAL BLVD.	592.77
BM # 9	" CUT SET 1397'± EAST OF INTERSECTION OF CORPORATE CROSSING AND CAPITAL BLVD. ON THE SOUTH SIDE OF CAPITAL BLVD. ON SOUTHWEST CORNER OF CURB INLET, 225'± NORTHEAST OF HEADWALL AND 63'± SOUTHWEST OF A LIGHT STANDARD.	587.29



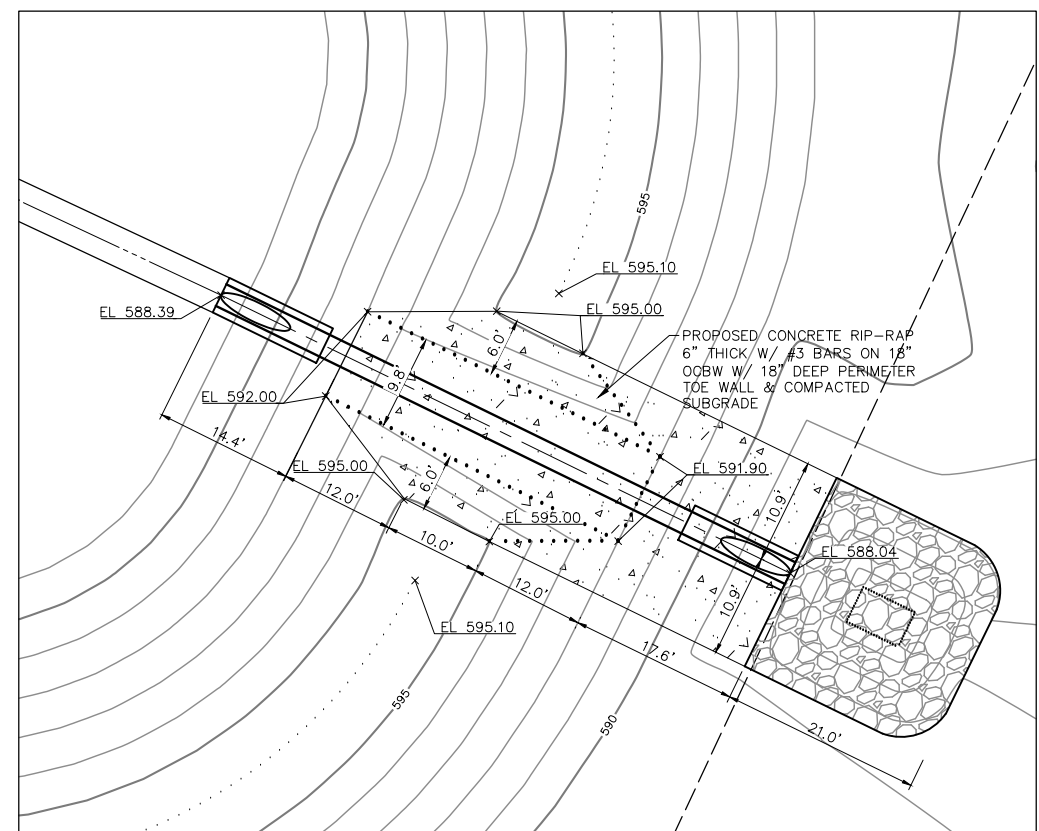
1 TYPICAL TRAPEZOIDAL WEIR DETAIL
(NOT TO SCALE)



VIEW "A-A" TRAPEZOIDAL WEIR DETAIL
(NOT TO SCALE)



2 REINFORCED CONCRETE SLOPING HEADWALL
NOT TO SCALE



3 CONCRETE WEIR
SCALE: 1"=10'

RECORD DRAWING

THE SIGNED AND SEALED CONSTRUCTION DOCUMENT HAS BEEN REVISED TO REFLECT CONSTRUCTION RECORDS MAINTAINED AND PROVIDED BY THE CONTRACTOR FOR THIS PROJECT. THE INFORMATION SHOWN ON THIS RECORD DRAWING, WHICH WAS PROVIDED BY THE CONTRACTOR, OR OTHERS NOT ASSOCIATED WITH THE DESIGN ENGINEER, CANNOT BE VERIFIED FOR ACCURACY OR COMPLETENESS. PACHECO KOCH SHALL ASSUME NO LIABILITY FOR ANY CHANGES MADE DURING CONSTRUCTION THAT WERE NOT SPECIFICALLY APPROVED BY THE ENGINEER PRIOR TO CONSTRUCTION. THE SEALED CONSTRUCTION DRAWINGS ARE ON FILE AT THE OFFICES OF PACHECO KOCH.

ATTENDED BY: *Chet Leigars, P.E.*

SIGNATURE: *Chet Leigars, P.E.*

ENGINEER OF RECORD: CHET LEIGARS, P.E.

CONTRACTOR: MILLER-VALENTINE CONSTRUCTION

DATE REVISED: 06/08/2017

NO.	DATE	REVISION
1	08/25/2016	ADDED THIS SHEET

Pacheco Koch
7557 RAMBLER ROAD, SUITE 1400
DALLAS, TX 75231 972.235.3031
TX REG. ENGINEERING FIRM F-14439
TX REG. SURVEYING FIRM LS-10193805

EAST DETENTION POND STORM SEWER PLAN
ROCKWALL MANUFACTURING FACILITY
LOT 1, BLOCK A, ROCKWALL
TECHNOLOGY PARK, PHASE IV
CITY OF ROCKWALL, ROCKWALL COUNTY, TEXAS

DESIGN	DRAWN	DATE	SCALE	NOTES	FILE	NO.
CTL	RHB	JULY 2016	1"=40'			C8.4

NELSON 6/14/2017 12:05 PM M:\DWG-37\3762-16.05A\DWG\CIVIL C-3D 2015\3762-16.054STRM.DWG

Rockwall Manufacturing Facility