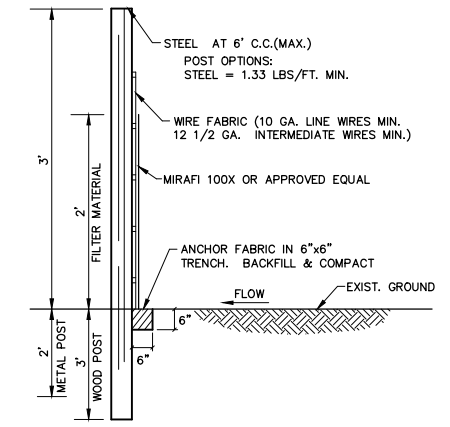
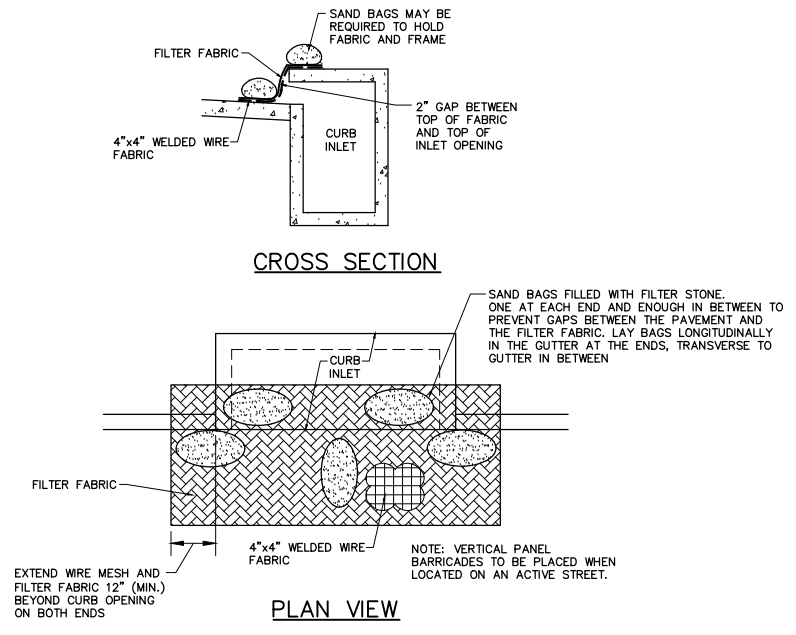


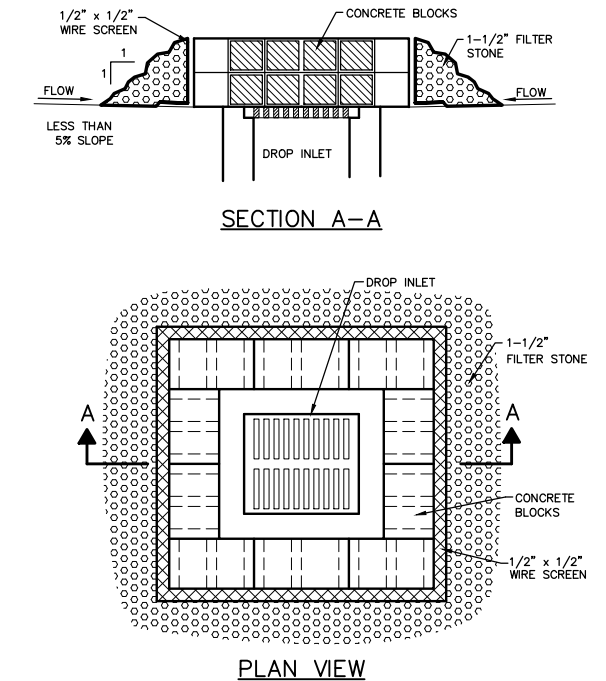
1 STABILIZED CONSTRUCTION ENTRANCE
NOT TO SCALE



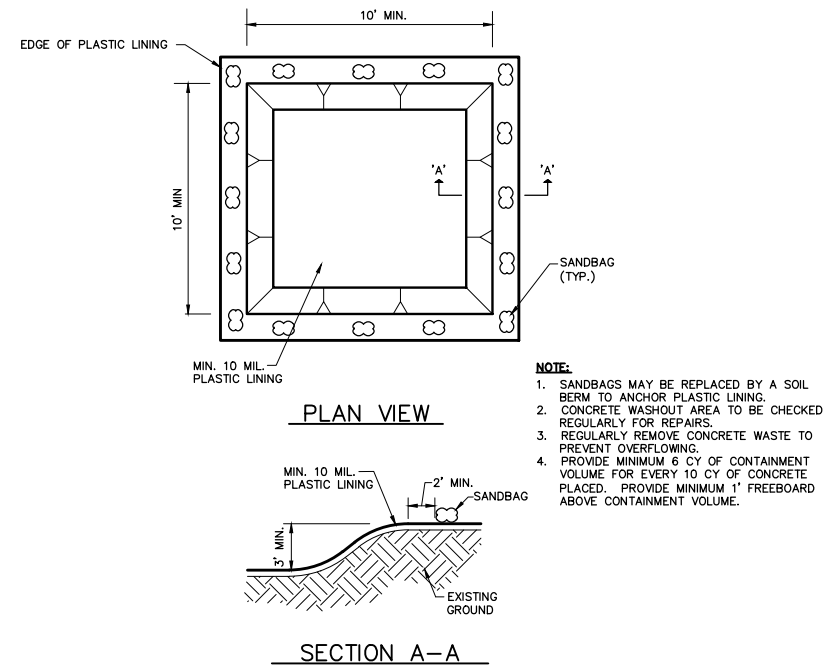
2 SILT FENCE
NOT TO SCALE



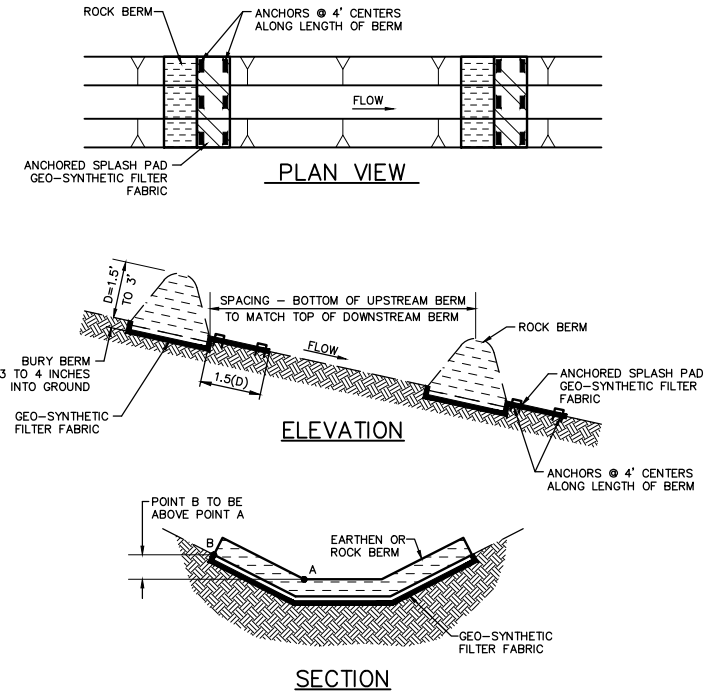
3 CURB INLET PROTECTION
NOT TO SCALE



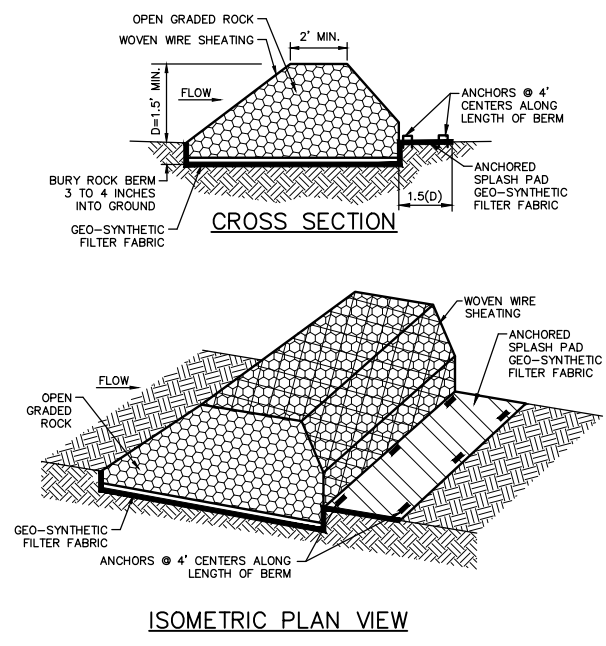
4 DROP INLET PROTECTION
NOT TO SCALE



5 CONCRETE WASHOUT AREA
NOT TO SCALE

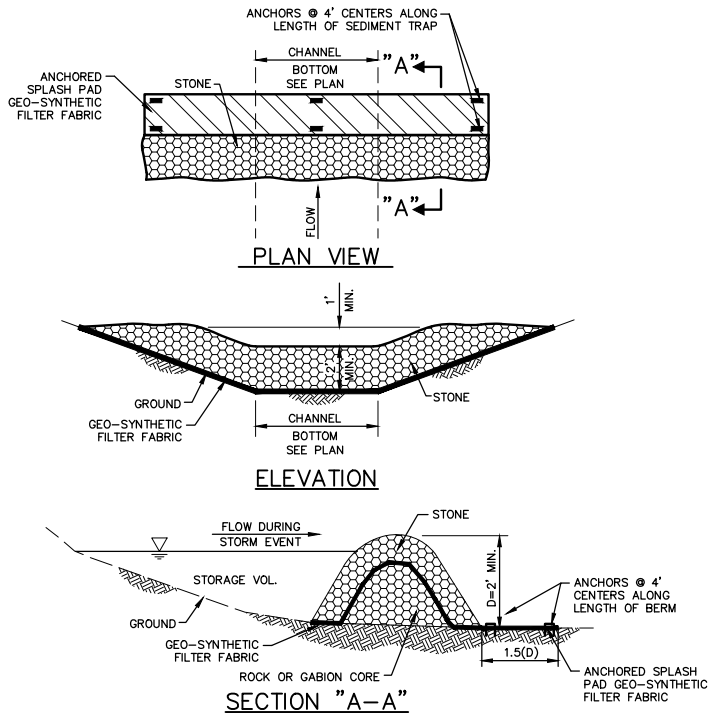


6 CHECK DAMS
NOT TO SCALE



7 ROCK BERM
NOT TO SCALE

- NOTES:
- USE ONLY OPEN GRADED ROCK 4-8 INCHES IN DIAMETER FOR STREAM FLOW CONDITION. USE OPEN GRADED ROCK 3-5 INCHES IN DIAMETER FOR OTHER CONDITIONS.
 - ROCK BERM SHALL BE SECURED WITH A WOVEN WIRE SHEATHING HAVING A MAX. OPENING OF 1 INCH AND A MIN. WIRE SIZE OF 20 GAUGE AND SHALL BE BURIED IN A TRENCH APPROX. 3 TO 4 INCHES DEEP.
 - THE ROCK BERM SHALL BE INSPECTED WEEKLY OR AFTER EACH RAIN EVENT AND SHALL BE REPLACED WHEN THE STRUCTURE CEASED TO FUNCTION AS INTENDED DUE TO SILT ACCUMULATION AMONG THE ROCKS, WASH OUT, CONSTRUCTION TRAFFIC DAMAGE, ETC.
 - WHEN SILT REACHES A DEPTH EQUAL TO ONE-THIRD OF THE HEIGHT OF THE BERM OR ONE FOOT, WHICHEVER IS LESS, THE SILT SHALL BE REMOVED AND DISPOSED OF IN AN APPROVED MANNER.
 - WHEN THE SITE IS COMPLETELY STABILIZED, THE BERM AND ACCUMULATED SILT SHALL BE REMOVED AND DISPOSED OF IN AN APPROVED MANNER.
 - ROCK BERM SHOULD BE USED AS CHECK DAMS FOR CONCENTRATED FLOW AND ARE NOT INTENDED FOR USE IN PERIMETER PROTECTION.



8 STONE OUTLET SEDIMENT TRAP
NOT TO SCALE

POLLUTION CONTROL GENERAL NOTES

- THIS PLAN HAS BEEN PREPARED TO PROVIDE MEANS TO PREVENT OR MINIMIZE POLLUTION OF STORM WATER.
- THE CONSTRUCTION ACTIVITY INCLUDED IN THIS PLAN WILL INCLUDE:
 - CLEARING AND GRUBBING
 - ROUGH GRADING
 - FINAL GRADING
 - UTILITY INSTALLATION
 - PAVEMENT INSTALLATION
 - BUILDING CONSTRUCTION
- THE TOTAL ESTIMATED LAND AREA TO BE DISTURBED IS 33.9 ACRES.
- THE ESTIMATED RUNOFF COEFFICIENT UPON COMPLETION OF THE PROJECT IS 90%
- THE STORM WATER EXITING THE SITE IS COLLECTED IN AN EXISTING DRAINAGE SYSTEM MAINTAINED BY THE CITY OF ROCKWALL, TEXAS.
- THE SOILS ON THE SITE ARE GENERALLY EXPANSIVE CLAYS.
- THE CONTRACTOR SHALL PROVIDE AND MAINTAIN EROSION PROTECTION AROUND THE WORK AREA PERIMETER AND AT ALL INLET MOUTHS PRIOR TO COMMENCING WORK AND UNTIL THE WORK AREA HAS BEEN STABILIZED.
- THE CONTRACTOR WILL REMOVE ALL EXCESS SOIL FROM CONSTRUCTION VEHICLES PRIOR TO EXITING THE SITE.
- ALL DISTURBED AREAS WHICH WILL NOT BE RE-DISTURBED FOR 14 DAYS MUST BEGIN BEING STABILIZED IMMEDIATELY BY THE CONTRACTOR TO CONTROL EROSION. THE CONTRACTOR HAS 14 DAYS TO HAVE ALL STABILIZATION AND EROSION CONTROL DEVICES IN PLACE.
- THE CONTRACTOR SHALL UNDERTAKE PROPER METHODS TO REDUCE DUST GENERATION FROM THE SITE.
- THE CONTRACTOR MUST COMPLY WITH FEDERAL, STATE AND LOCAL REGULATIONS REGARDING SEDIMENT AND EROSION CONTROL.
- A COPY OF THIS PLAN, AS PART OF THE SWPPP, MUST BE KEPT AT THE CONSTRUCTION FACILITY DURING THE ENTIRE CONSTRUCTION PERIOD.
- CONSTRUCTION SEQUENCING MUST PROVIDE FOR THE EXCAVATION OF AN ON-SITE SEDIMENTATION BASIN FOR THE COLLECTION OF SEDIMENT PRIOR TO THE DISTURBANCE OF GREATER THAN 10 ACRES OF LAND.
- ALL FINISHED GRADES ARE TO BE HYDROMULCHED, SPOT SODDED OR SEEDED AND WATERED UNTIL GROWTH IS ESTABLISHED ON AND OFF-SITE.
- A PIT OR WASH OUT BASIN SHALL BE CONSTRUCTED ON-SITE BY THE CONTRACTOR FOR THE "WASH OUT" OF CONCRETE TRUCKS. BASIN SHALL CONFORM TO LOCAL, STATE, AND FEDERAL REGULATIONS.
- A BERM OR OTHER SPILL PROTECTION MEASURE THAT CONFORMS TO LOCAL, STATE, AND FEDERAL REGULATIONS SHALL BE USED FOR ANY TEMPORARY FUEL STORAGE TANK ON-SITE.
- IF "SUMP" PUMPS ARE USED TO REMOVE WATER FROM EXCAVATED AREAS, FILTER THE DISCHARGE TO REMOVE SEDIMENT AND OTHER POLLUTANTS BEFORE THE WATER LEAVES THE SITE.

- TO PREVENT DAMAGE TO VEGETATION IN DOWNSTREAM WATER COURSES, LIMIT ANY PROPOSED LIME STABILIZATION OPERATIONS TO THAT WHICH CAN BE MIXED AND COMPACTED BY THE END OF EACH WORK DAY. GEOTEXTILE FABRIC IS NOT EFFECTIVE IN FILTERING LIME SINCE THE GRAIN SIZE IS SMALLER THAN THE OPENING IN THE FABRIC.
- VEHICLE PARKING AREAS, STAGING AREAS, STOCKPILES, SPOILS, ETC. SHALL BE LOCATED SUCH THAT THEY WILL NOT ADVERSELY AFFECT STORM WATER QUALITY. OTHERWISE, COVERING OR ENCIRCLING THE AREAS WITH PROTECTIVE MEASURES SHALL BE NECESSARY.
- STORE ALL TRASH AND BUILDING MATERIALS WASTE IN AN ENCLOSURE UNTIL IT CAN BE PROPERLY DISPOSED OF AT THE APPROPRIATE OFF-SITE FACILITIES.
- TRACKING OF SEDIMENT OFF-SITE BY TRUCK TRAFFIC SHALL BE HANDLED THROUGH REGULAR CLEANING.
- INSPECTIONS SHALL BE CONDUCTED BY THE PERMITEE ONCE EVERY TWO WEEKS AND WITHIN 24 HOURS AFTER STORM EVENT OF 0.5 INCHES OR MORE OR ONCE PER WEEK ON A SPECIFIC PRE-DEFINED DAY. THE INSPECTIONS WILL INCLUDE:
 - DISTURBED AREAS OF THE SITE THAT HAVE NOT BEEN STABILIZED.
 - AREAS USED FOR STORAGE OF MATERIALS THAT ARE EXPOSED TO PRECIPITATION.
 - STRUCTURAL CONTROL MEASURES.
 - LOCATIONS WHERE VEHICLES ENTER OR EXIT THE SITE.
- IDENTIFICATIONS OF MEASURES THAT NEED TO BE MAINTAINED, MODIFIED, OR ADDED TO CORRECT PROBLEMS.
- CONTRACTOR SHALL MINIMIZE THE EXPOSURE OF BUILDING MATERIALS, BUILDING PRODUCTS, CONSTRUCTION WASTES, TRASH, LANDSCAPE MATERIALS, FERTILIZERS, PESTICIDES, HERBICIDES, DETERGENTS, SANITARY WASTE AND OTHER MATERIALS PRESENT ON THE SITE TO PRECIPITATION AND STORMWATER RUNOFF.
- PERMANENTLY STABILIZE EXPOSED SOIL, WITHIN AND ADJACENT TO THE SITE, THAT IS DISTURBED BY VEHICLES, GRADING AND OTHER CONSTRUCTION ACTIVITIES.
- CONTAIN ALL RUNOFF FROM MATERIAL USED IN SUBGRADE STABILIZATION.
- MATERIAL STOCKPILES SHALL BE COVERED BY PLASTIC OR SURROUNDED BY EROSION CONTROL STRUCTURES TO CONTROL SEDIMENT RELEASES.
- CONTRACTOR SHALL PROTECT SLOPES IN EXCESS OF 15% IN ORDER TO MINIMIZE EROSION OF SOILS AND THE DISTURBANCE OF SLOPES.
- VEGETATION TO BE PRESERVED WHERE EVER POSSIBLE TO HELP REDUCE EROSION. WHERE VEGETATION MUST BE REMOVED, PRESERVE NATIVE TOPSOIL IN ALL AREAS POSSIBLE.
- MINIMIZE SOIL COMPACTION IN AREAS INTENDED FOR POST CONSTRUCTION PERSISTENT SURFACE.
- 80% OF ALL DISTURBED AREAS TO HAVE A MIN. OF 1" STRAND OF GRASS COVERAGE PRIOR TO CITY ACCEPTANCE OR CO.
- ALL DETENTION SYSTEMS TO BE FULLY INSTALLED AND FUNCTIONING PRIOR TO ANY CONCRETE INSTALLATION INCLUDING SLAB. THE SIDES AND BOTTOM OF THE DETENTION SYSTEM TO HAVE EITHER SEEDED ANCHORED (BERMUDA SEED) OR SODDED PRIOR TO ANY CONCRETE PLACEMENT.

RECORD DRAWING

THE SIGNED AND SEALED CONSTRUCTION DOCUMENT HAS BEEN REVISED TO REFLECT CONSTRUCTION RECORDS MAINTAINED AND PROVIDED BY THE CONTRACTOR FOR THIS PROJECT. THE INFORMATION SHOWN ON THIS RECORD DRAWING, WHICH WAS PROVIDED BY THE CONTRACTOR, OR OTHERS NOT ASSOCIATED WITH THE DESIGN ENGINEER, CANNOT BE VERIFIED FOR ACCURACY OR COMPLETENESS. PACHECO KOCH SHALL ASSUME NO LIABILITY FOR ANY CHANGES MADE DURING CONSTRUCTION THAT WERE NOT SPECIFICALLY APPROVED BY THE ENGINEER PRIOR TO CONSTRUCTION. THE SEALED CONSTRUCTION DRAWINGS ARE ON FILE AT THE OFFICES OF PACHECO KOCH.

ATTENDED BY: *[Signature]*

SIGNATURE: _____

ENGINEER OF RECORD: CHET LEUCERS, P.E.

CONTRACTOR: MILLER-VALENTE CONSTRUCTION

DATE REVISED: 06/08/2017

NO.	DATE	REVISION
06/09/2017		RECORD DRAWINGS
08/25/2016		ADDED NOTES

Pacheco Koch 7557 RAMBLER ROAD, SUITE 1400 DALLAS, TX 75231 972.235.3031 TX REG. ENGINEERING FIRM F-14439 TX REG. SURVEYING FIRM LS-10193805

EROSION CONTROL DETAILS

ROCKWALL MANUFACTURING FACILITY

LOT 1, BLOCK A, ROCKWALL TECHNOLOGY PARK, PHASE IV

CITY OF ROCKWALL, ROCKWALL COUNTY, TEXAS

DESIGN	DRAWN	DATE	SCALE	NOTES	FILE	NO.
CTL	RHB	JULY 2016				C7.2

6/14/2017 12:00 PM
 M:\VMP-37\3782-16.05-A\DWG\CIVIL_C3D_2015\3782-16.05-REP.DWG
 P:\NELSON

Rockwall Manufacturing Facility