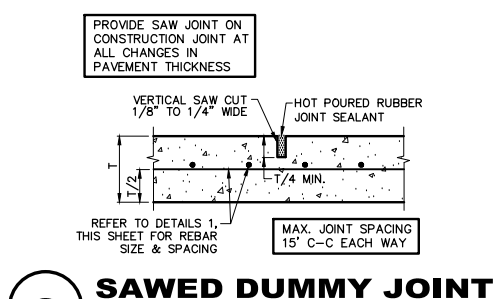
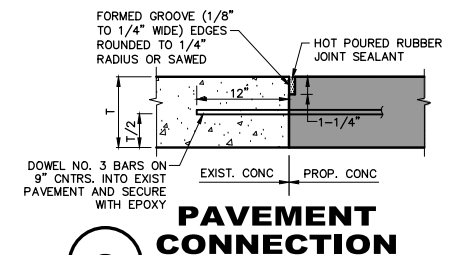


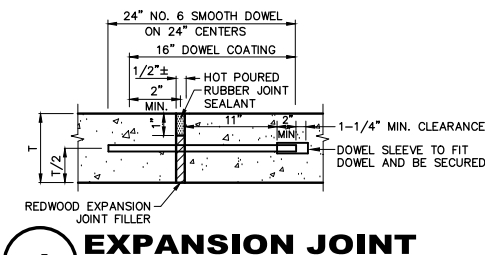
**1 CONCRETE PAVEMENT SECTION**  
NOT TO SCALE



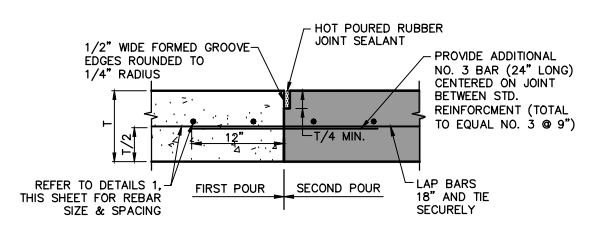
**2 SAWED DUMMY JOINT**  
NOT TO SCALE



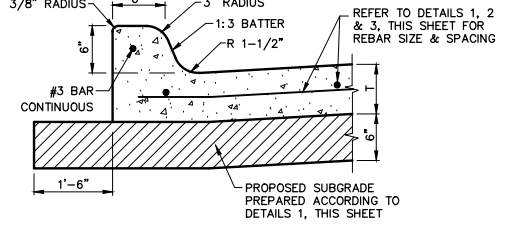
**3 PAVEMENT CONNECTION**  
NOT TO SCALE



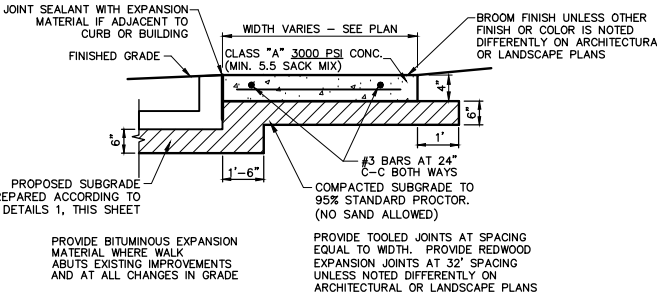
**4 EXPANSION JOINT**  
NOT TO SCALE



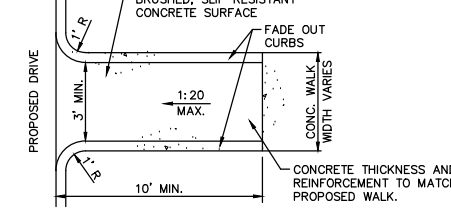
**5 CONSTRUCTION JOINT**  
NOT TO SCALE



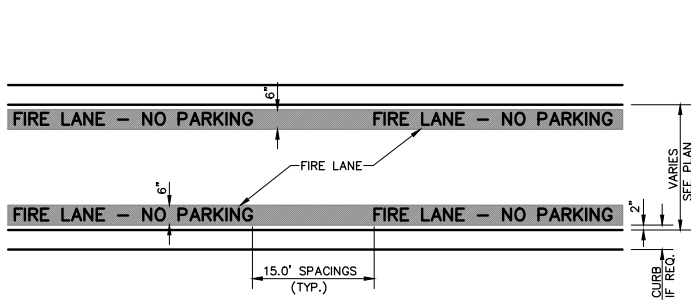
**6 INTEGRAL CURB**  
NOT TO SCALE



**7 CONCRETE WALK PRIVATE**  
NOT TO SCALE



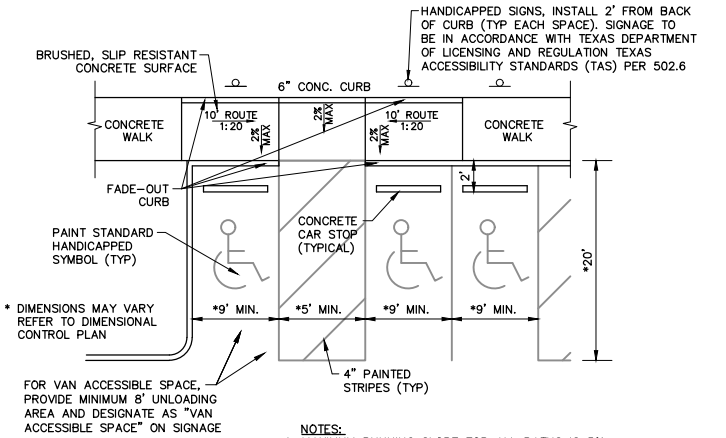
**8 SINGLE ACCESS ROUTE WITHOUT RAMP**  
NOT TO SCALE (PRIVATE ONLY)



**GENERAL NOTE:**  
A. STRIPING TO BE DONE IN ACCORDANCE WITH CITY STANDARDS.

**STRIPING DETAIL NOTE:**  
A. PAINT:  
1. STRIPE SHALL BE SIX (6) INCHES WIDE PAINTED WITH AN EXTERIOR ACRYLIC LATEX PAINT.  
A. COLOR SHALL BE "TRAFFIC RED" GUDEN NO. 63251 OR EQUAL.  
2. LETTERS SHALL BE FOUR (4) INCHES HIGH PAINTED WITH AN EXTERIOR ACRYLIC LATEX PAINT.  
B. COLOR SHALL BE "TRAFFIC WHITE" GUDEN NO. 563245 OR EQUAL.  
B. APPLICATION:  
1. STRIPE MAY BE BRUSHED OR SPRAYED, ONE COAT TO FINISH.  
2. LETTERS SHALL BE STENCIL FORMED, BRUSH APPLIED AND SPACED AS DETAILED ON THIS SHEET.

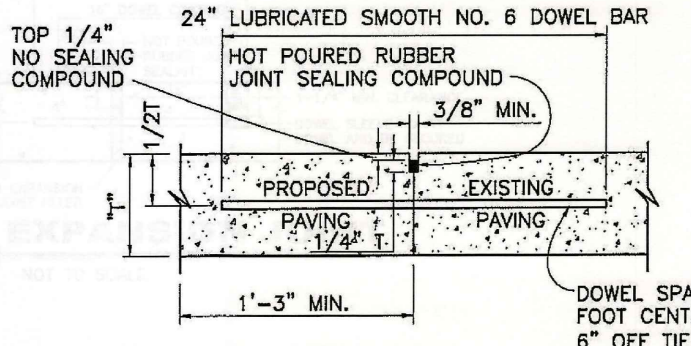
**9 FIRE LANE STRIPING**  
NOT TO SCALE



FOR VAN ACCESSIBLE SPACE, PROVIDE MINIMUM 8' UNLOADING AREA AND DESIGNATE AS "VAN ACCESSIBLE SPACE" ON SIGNAGE.

**NOTES:**  
1. MAXIMUM RUNNING SLOPE FOR ALL PATHS IS 5%. MAXIMUM CROSS SLOPE IS 2%. FOR THE FIRST FIVE FEET FROM THE DOOR A 2% SLOPE (MAX) MUST BE MAINTAINED.  
2. SIGNAGE AND MARKINGS TO BE IN ACCORDANCE WITH FEDERAL, STATE, AND LOCAL REGULATIONS.

**10 90° HANDICAP PARKING & TWO-WAY ACCESS ROUTE WITHOUT RAMP**  
NOT TO SCALE (PRIVATE ONLY)



NOTES: T=PAVEMENT THICKNESS

1. LONGITUDINAL BUTT CONSTRUCTION MAY BE UTILIZED IN PLACE OF LONGITUDINAL HINGED (KEYWAY) JOINT AT CONTRACTORS OPTION.  
2. DOWEL BARS SHALL BE DRILLED INTO PAVEMENT HORIZONTALLY BY USE OF A MECHANICAL RIG.

DRILLING BY HAND IS NOT ACCEPTABLE, PUSHING DOWEL BARS INTO GREEN CONCRETE NOT ACCEPTABLE

**11 LONGITUDINAL BUTT JOINT**  
NOT TO SCALE

**RECORD DRAWING**

THE SIGNED AND SEALED CONSTRUCTION DOCUMENT HAS BEEN REVISED TO REFLECT CONSTRUCTION RECORDS MAINTAINED AND PROVIDED BY THE CONTRACTOR FOR THIS PROJECT. THE INFORMATION SHOWN ON THIS RECORD DRAWING, WHICH WAS PROVIDED BY THE CONTRACTOR, OR OTHERS NOT ASSOCIATED WITH THE DESIGN ENGINEER, CANNOT BE VERIFIED FOR ACCURACY OR COMPLETENESS. PACHECO KOCH SHALL ASSUME NO LIABILITY FOR ANY CHANGES MADE DURING CONSTRUCTION THAT WERE NOT SPECIFICALLY APPROVED BY THE ENGINEER PRIOR TO CONSTRUCTION. THE SEALED CONSTRUCTION DRAWINGS ARE ON FILE AT THE OFFICES OF PACHECO KOCH.

ATTESTED BY: *[Signature]*  
SIGNATURE: \_\_\_\_\_  
ENGINEER OF RECORD: CHET LEUGERS, P.E.  
CONTRACTOR: MILLER-VALENTINE CONSTRUCTION  
DATE REVISED: 06/08/2017

NO.	DATE	REVISION
06/09/2017	RECORD DRAWINGS	

**Pacheco Koch**  
7557 RAMBLER ROAD, SUITE 1400  
DALLAS, TX 75231 972.235.3031  
TX REG. ENGINEERING FIRM F-14439  
TX REG. SURVEYING FIRM LS-10193805

**PAVEMENT DETAILS**  
**ROCKWALL MANUFACTURING FACILITY**  
**LOT 1, BLOCK A, ROCKWALL**  
**TECHNOLOGY PARK, PHASE IV**  
**CITY OF ROCKWALL, ROCKWALL COUNTY, TEXAS**

DESIGN	DRAWN	DATE	SCALE	NOTES	FILE	NO.
CTL	RHB	JULY 2016				<b>C6.2</b>