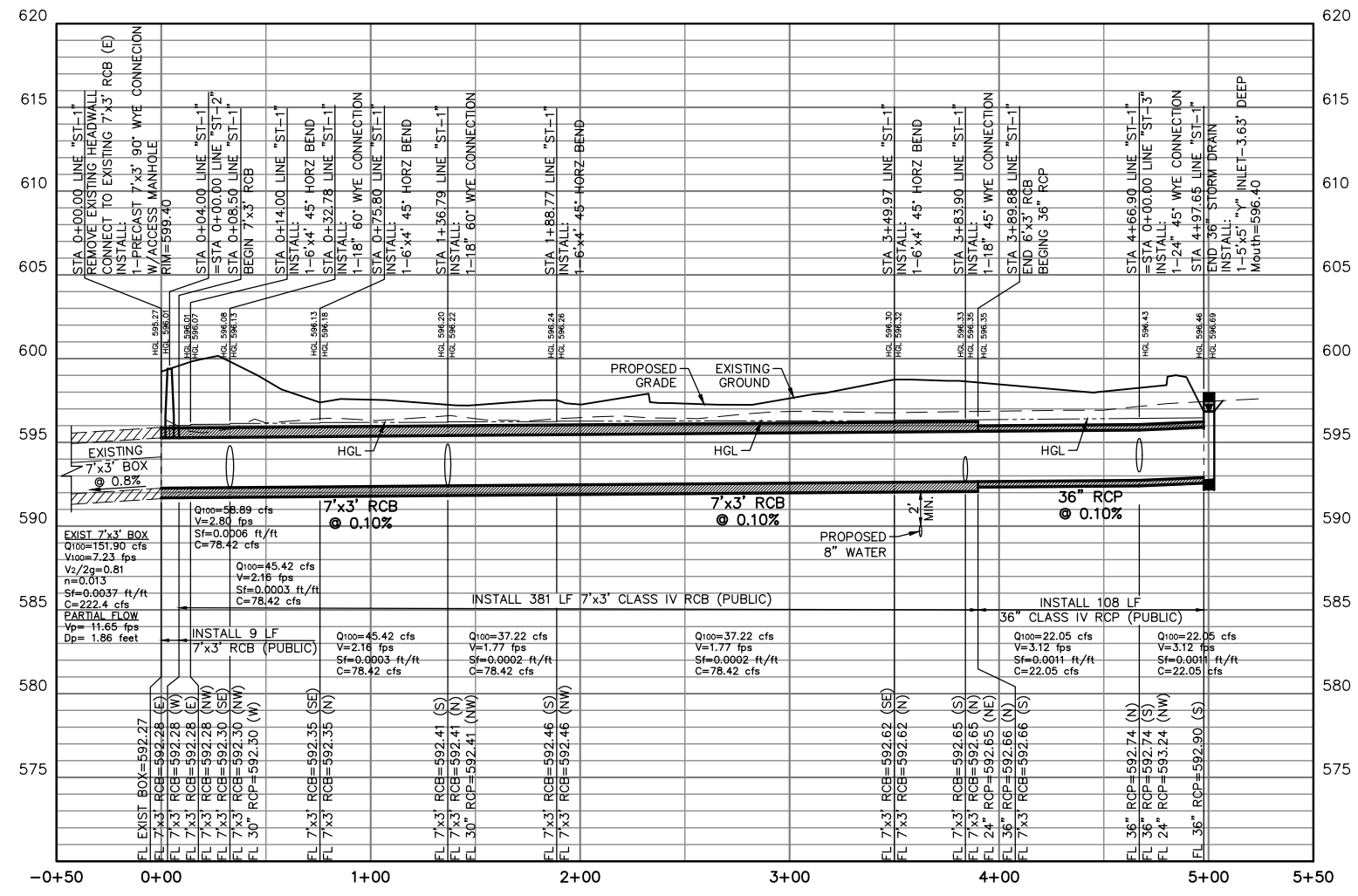


PROFILE: ST-2



PROFILE: ST-1

NOTE:
REFER TO SHEET C4.1
FOR GRADING & DRAINAGE
GENERAL NOTES AND
BENCHMARK LIST

RECORD DRAWING

THE SIGNED AND SEALED CONSTRUCTION DOCUMENT HAS BEEN REVISED TO REFLECT CONSTRUCTION RECORDS MAINTAINED AND PROVIDED BY THE CONTRACTOR FOR THIS PROJECT. THE INFORMATION SHOWN ON THIS RECORD DRAWING, WHICH WAS PROVIDED BY THE CONTRACTOR, OR OTHERS NOT ASSOCIATED WITH THE DESIGN ENGINEER, CANNOT BE VERIFIED FOR ACCURACY OR COMPLETENESS. PACHECO KOCH SHALL ASSUME NO LIABILITY FOR ANY CHANGES MADE DURING CONSTRUCTION THAT WERE NOT SPECIFICALLY APPROVED BY THE ENGINEER PRIOR TO CONSTRUCTION. THE SEALED CONSTRUCTION DRAWINGS ARE ON FILE AT THE OFFICES OF PACHECO KOCH.

ATTESTED BY: *[Signature]*

SIGNATURE: _____

ENGINEER OF RECORD: CHET LEUGERS, P.E.

CONTRACTOR: MILLER-VALENTINE CONSTRUCTION

DATE REVISED: 06/08/2017

NO.	06/09/2017	RECORD DRAWINGS
		REVISION
Pacheco Koch		
7557 RAMBLER ROAD, SUITE 1400 DALLAS, TX 75231 972.235.3031 TX REG. ENGINEERING FIRM F-14439 TX REG. SURVEYING FIRM LS-10193805		
STORM SEWER PROFILE		
ROCKWALL MANUFACTURING FACILITY		
LOT 1, BLOCK A, ROCKWALL		
TECHNOLOGY PARK, PHASE IV		
CITY OF ROCKWALL, ROCKWALL COUNTY, TEXAS		
DESIGN	DRAWN	DATE
CTL	RHB	JULY 2016
SCALE	NOTES	FILE
1"=40'H 1"=05'V		
		NO.
		C4.5

NELSON
6/14/2017 11:56 AM
M:\CWC-37\3782-16.054\DWG\CIVIL C-3D 2015\3782-16.054STRM.DWG

Rockwall Manufacturing Facility