



0 20 40 80 120  
GRAPHIC SCALE IN FEET

**LEGEND**

B	BOLLARD
EM	ELECTRIC METER
PP	POWER POLE
LS	LIGHT STANDARD
WM	WATER METER
WV	WATER VALVE
ICV	IRRIGATION CONTROL VALVE
FH	FIRE HYDRANT
CO	CLEANOUT
MH	MANHOLE
TSC	TRAFFIC SIGNAL CONTROL
TSP	TRAFFIC SIGNAL POLE
TELE	TELEPHONE BOX
FL	FLOOD LIGHT
FP	FLAG POLE
TR	TRAFFIC SIGN
IRS	1/2-INCH IRON ROD
(C.M.)	W/"PACHECO KOCH" CAP SET
---	CONTROLLING MONUMENT
---	PROPERTY LINE
---	FENCE
---	OVERHEAD UTILITY LINE
---	UNDERGROUND ELECTRIC LINE
---	UNDERGROUND TELEPHONE LINE
---	UNDERGROUND CABLE LINE
---	UNDERGROUND WATER LINE
---	UNDERGROUND SANITARY SEWER LINE

**!!! WARNING !!!**  
EXISTING OVERHEAD/UNDERGROUND TELEPHONE, ELECTRIC AND UNDERGROUND GAS AND FIBER OPTIC UTILITIES IN THE AREA. CONTACT UTILITY COMPANIES 48 HOURS PRIOR TO CONSTRUCTION AT 1-800-DIG-TESS.

**NOTE:**  
REFER TO SHEET C4.1 FOR GRADING & DRAINAGE GENERAL NOTES.

**BENCH MARK LIST**

CITY BM #19	CITY OF ROCKWALL MONUMENT FOUND AT THE NORTHWEST INTERSECTION OF DIAMOND WAY AND SILVER VIEW. ELEV=600.687
BM# 2	✗ CUT SET ON 131'± EAST OF CORPORATE CROSSING AND DISCOVERY BLVD. ON THE NORTHEAST CORNER OF CURB INLET ON NORTH SIDE OF DISCOVERY BLVD., 100'± NORTHEAST OF FH W/YELLOW TOP AND 145'± NORTHWEST OF A LIGHT STANDARD. ELEV=603.50
BM# 4	✗ CUT SET ON SOUTHEAST CORNER OF CURB INLET ON SOUTH SIDE OF DISCOVERY BLVD., 633'± WEST OF INTERSECTION OF DISCOVERY BLVD. AND DATA DRIVE, 48'± WEST OF A SANITARY SEWER MANHOLE AND 10'± NORTHEAST OF A WATER VALVE. ELEV=608.91
BM# 5	✗ CUT SET ON SOUTHEAST CORNER OF DISCOVERY BLVD. AND DATA DRIVE ON SIDEWALK AT RAMP, 20'± NORTHEAST OF STOP SIGN, 20'± SOUTHWEST OF THE END OF GUARD-RAIL AND 60'± SOUTHWEST OF A STORM SEWER MANHOLE IN CENTERLINE OF INTERSECTION. ELEV=600.46
BM# 7	✗ CUT SET AT THE NORTHEAST INTERSECTION OF DATA DRIVE AND CAPITAL BLVD. ON THE EAST CURB OF DATA DRIVE, 20'± EAST OF THE STORM SEWER MANHOLE IN CENTERLINE OF INTERSECTION AND 14'± SOUTH OF THE END OF A GUARD-RAIL. ELEV=603.52
BM# 8	✗ CUT SET ON EDGE OF CONCRETE ON THE NORTH SIDE OF CAPITAL BLVD., 900'± FROM INTERSECTION OF DATA DRIVE AND CAPITAL BLVD., 134'± NORTHEAST OF STORM SEWER MANHOLE ON CENTERLINE OF CAPITAL BLVD., AND 35'± NORTHWEST OF A FIRE HYDRANT W/ YELLOW TOP ON SOUTHWEST OF CAPITAL BLVD. ELEV=592.77
BM# 9	✗ CUT SET 1397'± EAST OF INTERSECTION OF CORPORATE CROSSING AND CAPITAL BLVD. ON THE SOUTH SIDE OF CAPITAL BLVD. ON SOUTHWEST CORNER OF CURB INLET, 225'± NORTHEAST OF HEADWALL AND 63'± SOUTHWEST OF A LIGHT STANDARD. ELEV=587.29

**NOTE:**  
SEE SHEET C8.4 FOR EAST DETENTION POND STORM SEWER

**RECORD DRAWING**

THE SIGNED AND SEALED CONSTRUCTION DOCUMENT HAS BEEN REVISED TO REFLECT CONSTRUCTION RECORDS MAINTAINED AND PROVIDED BY THE CONTRACTOR FOR THIS PROJECT. THE INFORMATION SHOWN ON THIS RECORD DRAWING, WHICH WAS PROVIDED BY THE CONTRACTOR, OR OTHERS NOT ASSOCIATED WITH THE DESIGN ENGINEER, CANNOT BE VERIFIED FOR ACCURACY OR COMPLETENESS. PACHECO KOCH SHALL ASSUME NO LIABILITY FOR ANY CHANGES MADE DURING CONSTRUCTION THAT WERE NOT SPECIFICALLY APPROVED BY THE ENGINEER PRIOR TO CONSTRUCTION. THE SEALED CONSTRUCTION DRAWINGS ARE ON FILE AT THE OFFICES OF PACHECO KOCH.

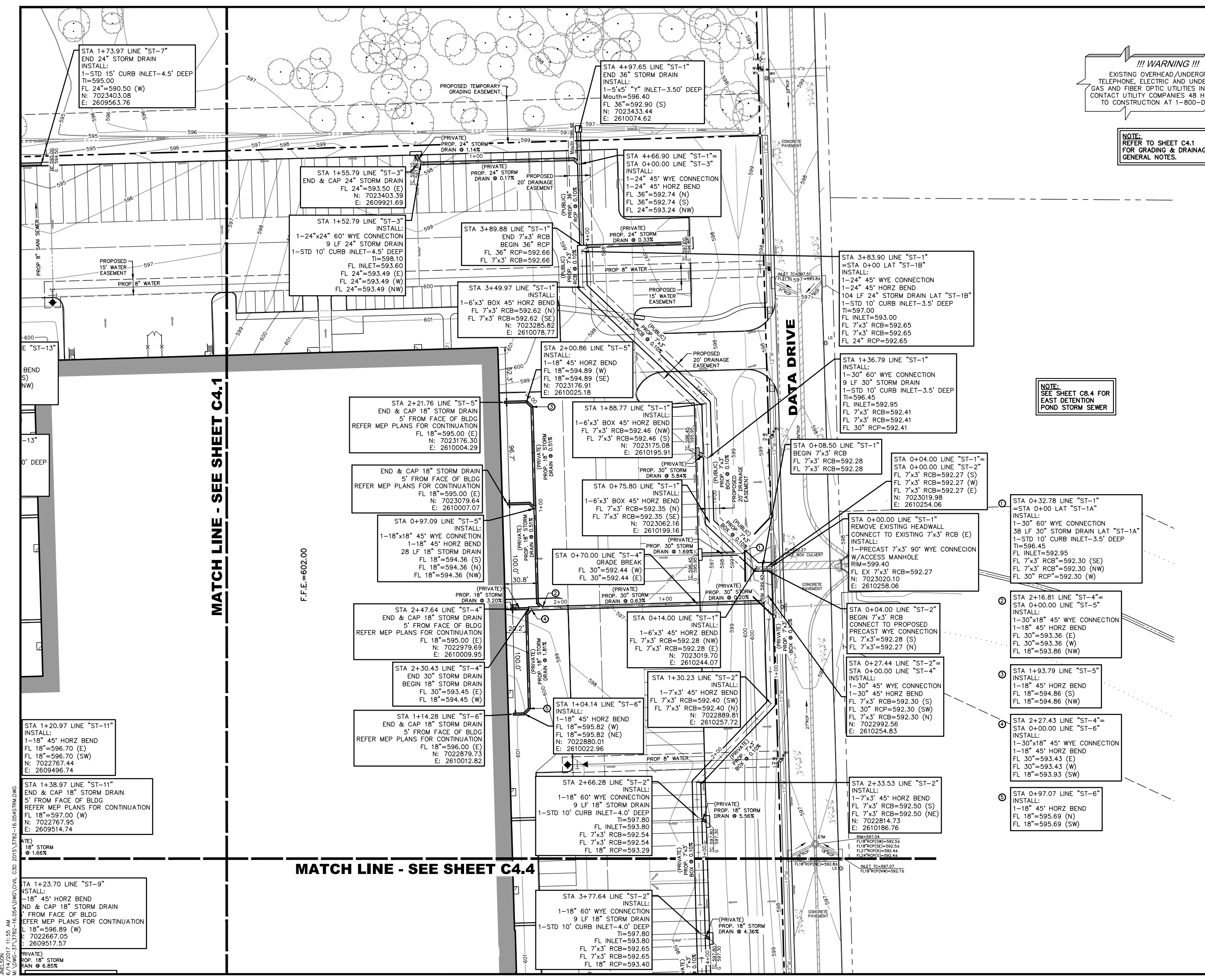
ATTESTED BY: *Chet Leugers*  
SIGNATURE: \_\_\_\_\_  
ENGINEER OF RECORD: CHET LEUGERS, P.E.  
CONTRACTOR: MILLER-VALENTINE CONSTRUCTION  
DATE REVISED: 06/08/2017

NO.	DATE	REVISION
1	06/09/2017	RECORD DRAWINGS
2	06/25/2016	REVISED TO AND FL ELEV. FOR ST-1A, ST-1B, LATERAL CONN. TO ST-1 @ STA 1+36.79

**Pacheco Koch** 7557 RAMBLER ROAD, SUITE 1400  
DALLAS, TX 75231 972.235.3031  
TX REG. ENGINEERING FIRM F-14439  
TX REG. SURVEYING FIRM LS-10193005

**STORM SEWER PLAN**  
**ROCKWALL MANUFACTURING FACILITY**  
**LOT 1, BLOCK A, ROCKWALL**  
**TECHNOLOGY PARK, PHASE IV**  
**CITY OF ROCKWALL, ROCKWALL COUNTY, TEXAS**

DESIGN	DRAWN	DATE	SCALE	NOTES	FILE	NO.
CTL	RHB	JULY 2016	1"=40'			<b>C4.2</b>



NELSON 6/14/2017 11:55 AM  
 M:\CADD\2016\16-054\DWG\CIVIL C3D 2015\13782-16-054\STRM.DWG  
 STA 1+20.97 LINE "ST-11"  
 INSTALL:  
 1-18" 45" HORZ BEND  
 FL 18"=596.70 (E)  
 FL 18"=596.70 (SW)  
 N: 7022767.44  
 E: 2609496.74  
 STA 1+38.97 LINE "ST-11"  
 END & CAP 18" STORM DRAIN  
 5' FROM FACE OF BLDG  
 REFER MEP PLANS FOR CONTINUATION  
 FL 18"=597.00 (W)  
 N: 7022767.95  
 E: 2609514.74  
 STA 1+23.70 LINE "ST-9"  
 INSTALL:  
 1-18" 45" HORZ BEND  
 END & CAP 18" STORM DRAIN  
 5' FROM FACE OF BLDG  
 REFER MEP PLANS FOR CONTINUATION  
 FL 18"=596.89 (W)  
 N: 7022667.05  
 E: 2609517.57  
 STA 1+23.70 LINE "ST-9"  
 INSTALL:  
 1-18" 45" HORZ BEND  
 END & CAP 18" STORM DRAIN  
 5' FROM FACE OF BLDG  
 REFER MEP PLANS FOR CONTINUATION  
 FL 18"=596.89 (W)  
 N: 7022667.05  
 E: 2609517.57  
 STA 1+20.97 LINE "ST-11"  
 INSTALL:  
 1-18" 45" HORZ BEND  
 FL 18"=596.70 (E)  
 FL 18"=596.70 (SW)  
 N: 7022767.44  
 E: 2609496.74  
 STA 1+38.97 LINE "ST-11"  
 END & CAP 18" STORM DRAIN  
 5' FROM FACE OF BLDG  
 REFER MEP PLANS FOR CONTINUATION  
 FL 18"=597.00 (W)  
 N: 7022767.95  
 E: 2609514.74  
 STA 1+23.70 LINE "ST-9"  
 INSTALL:  
 1-18" 45" HORZ BEND  
 END & CAP 18" STORM DRAIN  
 5' FROM FACE OF BLDG  
 REFER MEP PLANS FOR CONTINUATION  
 FL 18"=596.89 (W)  
 N: 7022667.05  
 E: 2609517.57  
 STA 1+20.97 LINE "ST-11"  
 INSTALL:  
 1-18" 45" HORZ BEND  
 FL 18"=596.70 (E)  
 FL 18"=596.70 (SW)  
 N: 7022767.44  
 E: 2609496.74  
 STA 1+38.97 LINE "ST-11"  
 END & CAP 18" STORM DRAIN  
 5' FROM FACE OF BLDG  
 REFER MEP PLANS FOR CONTINUATION  
 FL 18"=597.00 (W)  
 N: 7022767.95  
 E: 2609514.74  
 STA 1+23.70 LINE "ST-9"  
 INSTALL:  
 1-18" 45" HORZ BEND  
 END & CAP 18" STORM DRAIN  
 5' FROM FACE OF BLDG  
 REFER MEP PLANS FOR CONTINUATION  
 FL 18"=596.89 (W)  
 N: 7022667.05  
 E: 2609517.57  
 STA 1+20.97 LINE "ST-11"  
 INSTALL:  
 1-18" 45" HORZ BEND  
 FL 18"=596.70 (E)  
 FL 18"=596.70 (SW)  
 N: 7022767.44  
 E: 2609496.74  
 STA 1+38.97 LINE "ST-11"  
 END & CAP 18" STORM DRAIN  
 5' FROM FACE OF BLDG  
 REFER MEP PLANS FOR CONTINUATION  
 FL 18"=597.00 (W)  
 N: 7022767.95  
 E: 2609514.74  
 STA 1+23.70 LINE "ST-9"  
 INSTALL:  
 1-18" 45" HORZ BEND  
 END & CAP 18" STORM DRAIN  
 5' FROM FACE OF BLDG  
 REFER MEP PLANS FOR CONTINUATION  
 FL 18"=596.89 (W)  
 N: 7022667.05  
 E: 2609517.57  
 STA 1+20.97 LINE "ST-11"  
 INSTALL:  
 1-18" 45" HORZ BEND  
 FL 18"=596.70 (E)  
 FL 18"=596.70 (SW)  
 N: 7022767.44  
 E: 2609496.74  
 STA 1+38.97 LINE "ST-11"  
 END & CAP 18" STORM DRAIN  
 5' FROM FACE OF BLDG  
 REFER MEP PLANS FOR CONTINUATION  
 FL 18"=597.00 (W)  
 N: 7022767.95  
 E: 2609514.74  
 STA 1+23.70 LINE "ST-9"  
 INSTALL:  
 1-18" 45" HORZ BEND  
 END & CAP 18" STORM DRAIN  
 5' FROM FACE OF BLDG  
 REFER MEP PLANS FOR CONTINUATION  
 FL 18"=596.89 (W)  
 N: 7022667.05  
 E: 2609517.57  
 STA 1+20.97 LINE "ST-11"  
 INSTALL:  
 1-18" 45" HORZ BEND  
 FL 18"=596.70 (E)  
 FL 18"=596.70 (SW)  
 N: 7022767.44  
 E: 2609496.74  
 STA 1+38.97 LINE "ST-11"  
 END & CAP 18" STORM DRAIN  
 5' FROM FACE OF BLDG  
 REFER MEP PLANS FOR CONTINUATION  
 FL 18"=597.00 (W)  
 N: 7022767.95  
 E: 2609514.74  
 STA 1+23.70 LINE "ST-9"  
 INSTALL:  
 1-18" 45" HORZ BEND  
 END & CAP 18" STORM DRAIN  
 5' FROM FACE OF BLDG  
 REFER MEP PLANS FOR CONTINUATION  
 FL 18"=596.89 (W)  
 N: 7022667.05  
 E: 2609517.57  
 STA 1+20.97 LINE "ST-11"  
 INSTALL:  
 1-18" 45" HORZ BEND  
 FL 18"=596.70 (E)  
 FL 18"=596.70 (SW)  
 N: 7022767.44  
 E: 2609496.74  
 STA 1+38.97 LINE "ST-11"  
 END & CAP 18" STORM DRAIN  
 5' FROM FACE OF BLDG  
 REFER MEP PLANS FOR CONTINUATION  
 FL 18"=597.00 (W)  
 N: 7022767.95  
 E: 2609514.74  
 STA 1+23.70 LINE "ST-9"  
 INSTALL:  
 1-18" 45" HORZ BEND  
 END & CAP 18" STORM DRAIN  
 5' FROM FACE OF BLDG  
 REFER MEP PLANS FOR CONTINUATION  
 FL 18"=596.89 (W)  
 N: 7022667.05  
 E: 2609517.57  
 STA 1+20.97 LINE "ST-11"  
 INSTALL:  
 1-18" 45" HORZ BEND  
 FL 18"=596.70 (E)  
 FL 18"=596.70 (SW)  
 N: 7022767.44  
 E: 2609496.74  
 STA 1+38.97 LINE "ST-11"  
 END & CAP 18" STORM DRAIN  
 5' FROM FACE OF BLDG  
 REFER MEP PLANS FOR CONTINUATION  
 FL 18"=597.00 (W)  
 N: 7022767.95  
 E: 2609514.74  
 STA 1+23.70 LINE "ST-9"  
 INSTALL:  
 1-18" 45" HORZ BEND  
 END & CAP 18" STORM DRAIN  
 5' FROM FACE OF BLDG  
 REFER MEP PLANS FOR CONTINUATION  
 FL 18"=596.89 (W)  
 N: 7022667.05  
 E: 2609517.57  
 STA 1+20.97 LINE "ST-11"  
 INSTALL:  
 1-18" 45" HORZ BEND  
 FL 18"=596.70 (E)  
 FL 18"=596.70 (SW)  
 N: 7022767.44  
 E: 2609496.74  
 STA 1+38.97 LINE "ST-11"  
 END & CAP 18" STORM DRAIN  
 5' FROM FACE OF BLDG  
 REFER MEP PLANS FOR CONTINUATION  
 FL 18"=597.00 (W)  
 N: 7022767.95  
 E: 2609514.74  
 STA 1+23.70 LINE "ST-9"  
 INSTALL:  
 1-18" 45" HORZ BEND  
 END & CAP 18" STORM DRAIN  
 5' FROM FACE OF BLDG  
 REFER MEP PLANS FOR CONTINUATION  
 FL 18"=596.89 (W)  
 N: 7022667.05  
 E: 2609517.57  
 STA 1+20.97 LINE "ST-11"  
 INSTALL:  
 1-18" 45" HORZ BEND  
 FL 18"=596.70 (E)  
 FL 18"=596.70 (SW)  
 N: 7022767.44  
 E: 2609496.74  
 STA 1+38.97 LINE "ST-11"  
 END & CAP 18" STORM DRAIN  
 5' FROM FACE OF BLDG  
 REFER MEP PLANS FOR CONTINUATION  
 FL 18"=597.00 (W)  
 N: 7022767.95  
 E: 2609514.74  
 STA 1+23.70 LINE "ST-9"  
 INSTALL:  
 1-18" 45" HORZ BEND  
 END & CAP 18" STORM DRAIN  
 5' FROM FACE OF BLDG  
 REFER MEP PLANS FOR CONTINUATION  
 FL 18"=596.89 (W)  
 N: 7022667.05  
 E: 2609517.57  
 STA 1+20.97 LINE "ST-11"  
 INSTALL:  
 1-18" 45" HORZ BEND  
 FL 18"=596.70 (E)  
 FL 18"=596.70 (SW)  
 N: 7022767.44  
 E: 2609496.74  
 STA 1+38.97 LINE "ST-11"  
 END & CAP 18" STORM DRAIN  
 5' FROM FACE OF BLDG  
 REFER MEP PLANS FOR CONTINUATION  
 FL 18"=597.00 (W)  
 N: 7022767.95  
 E: 2609514.74  
 STA 1+23.70 LINE "ST-9"  
 INSTALL:  
 1-18" 45" HORZ BEND  
 END & CAP 18" STORM DRAIN  
 5' FROM FACE OF BLDG  
 REFER MEP PLANS FOR CONTINUATION  
 FL 18"=596.89 (W)  
 N: 7022667.05  
 E: 2609517.57  
 STA 1+20.97 LINE "ST-11"  
 INSTALL:  
 1-18" 45" HORZ BEND  
 FL 18"=596.70 (E)  
 FL 18"=596.70 (SW)  
 N: 7022767.44  
 E: 2609496.74  
 STA 1+38.97 LINE "ST-11"  
 END & CAP 18" STORM DRAIN  
 5' FROM FACE OF BLDG  
 REFER MEP PLANS FOR CONTINUATION  
 FL 18"=597.00 (W)  
 N: 7022767.95  
 E: 2609514.74  
 STA 1+23.70 LINE "ST-9"  
 INSTALL:  
 1-18" 45" HORZ BEND  
 END & CAP 18" STORM DRAIN  
 5' FROM FACE OF BLDG  
 REFER MEP PLANS FOR CONTINUATION  
 FL 18"=596.89 (W)  
 N: 7022667.05  
 E: 2609517.57  
 STA 1+20.97 LINE "ST-11"  
 INSTALL:  
 1-18" 45" HORZ BEND  
 FL 18"=596.70 (E)  
 FL 18"=596.70 (SW)  
 N: 7022767.44  
 E: 2609496.74  
 STA 1+38.97 LINE "ST-11"  
 END & CAP 18" STORM DRAIN  
 5' FROM FACE OF BLDG  
 REFER MEP PLANS FOR CONTINUATION  
 FL 18"=597.00 (W)  
 N: 7022767.95  
 E: 2609514.74  
 STA 1+23.70 LINE "ST-9"  
 INSTALL:  
 1-18" 45" HORZ BEND  
 END & CAP 18" STORM DRAIN  
 5' FROM FACE OF BLDG  
 REFER MEP PLANS FOR CONTINUATION  
 FL 18"=596.89 (W)  
 N: 7022667.05  
 E: 2609517.57  
 STA 1+20.97 LINE "ST-11"  
 INSTALL:  
 1-18" 45" HORZ BEND  
 FL 18"=596.70 (E)  
 FL 18"=596.70 (SW)  
 N: 7022767.44  
 E: 2609496.74  
 STA 1+38.97 LINE "ST-11"  
 END & CAP 18" STORM DRAIN  
 5' FROM FACE OF BLDG  
 REFER MEP PLANS FOR CONTINUATION  
 FL 18"=597.00 (W)  
 N: 7022767.95  
 E: 2609514.74  
 STA 1+23.70 LINE "ST-9"  
 INSTALL:  
 1-18" 45" HORZ BEND  
 END & CAP 18" STORM DRAIN  
 5' FROM FACE OF BLDG  
 REFER MEP PLANS FOR CONTINUATION  
 FL 18"=596.89 (W)  
 N: 7022667.05  
 E: 2609517.57  
 STA 1+20.97 LINE "ST-11"  
 INSTALL:  
 1-18" 45" HORZ BEND  
 FL 18"=596.70 (E)  
 FL 18"=596.70 (SW)  
 N: 7022767.44  
 E: 2609496.74  
 STA 1+38.97 LINE "ST-11"  
 END & CAP 18" STORM DRAIN  
 5' FROM FACE OF BLDG  
 REFER MEP PLANS FOR CONTINUATION  
 FL 18"=597.00 (W)  
 N: 7022767.95  
 E: 2609514.74  
 STA 1+23.70 LINE "ST-9"  
 INSTALL:  
 1-18" 45" HORZ BEND  
 END & CAP 18" STORM DRAIN  
 5' FROM FACE OF BLDG  
 REFER MEP PLANS FOR CONTINUATION  
 FL 18"=596.89 (W)  
 N: 7022667.05  
 E: 2609517.57  
 STA 1+20.97 LINE "ST-11"  
 INSTALL:  
 1-18" 45" HORZ BEND  
 FL 18"=596.70 (E)  
 FL 18"=596.70 (SW)  
 N: 7022767.44  
 E: 2609496.74  
 STA 1+38.97 LINE "ST-11"  
 END & CAP 18" STORM DRAIN  
 5' FROM FACE OF BLDG  
 REFER MEP PLANS FOR CONTINUATION  
 FL 18"=597.00 (W)  
 N: 7022767.95  
 E: 2609514.74  
 STA 1+23.70 LINE "ST-9"  
 INSTALL:  
 1-18" 45" HORZ BEND  
 END & CAP 18" STORM DRAIN  
 5' FROM FACE OF BLDG  
 REFER MEP PLANS FOR CONTINUATION  
 FL 18"=596.89 (W)  
 N: 7022667.05  
 E: 2609517.57  
 STA 1+20.97 LINE "ST-11"  
 INSTALL:  
 1-18" 45" HORZ BEND  
 FL 18"=596.70 (E)  
 FL 18"=596.70 (SW)  
 N: 7022767.44  
 E: 2609496.74  
 STA 1+38.97 LINE "ST-11"  
 END & CAP 18" STORM DRAIN  
 5' FROM FACE OF BLDG  
 REFER MEP PLANS FOR CONTINUATION  
 FL 18"=597.00 (W)  
 N: 7022767.95  
 E: 2609514.74  
 STA 1+23.70 LINE "ST-9"  
 INSTALL:  
 1-18" 45" HORZ BEND  
 END & CAP 18" STORM DRAIN  
 5' FROM FACE OF BLDG  
 REFER MEP PLANS FOR CONTINUATION  
 FL 18"=596.89 (W)  
 N: 7022667.05  
 E: 2609517.57  
 STA 1+20.97 LINE "ST-11"  
 INSTALL:  
 1-18" 45" HORZ BEND  
 FL 18"=596.70 (E)  
 FL 18"=596.70 (SW)  
 N: 7022767.44  
 E: 2609496.74  
 STA 1+38.97 LINE "ST-11"  
 END & CAP 18" STORM DRAIN  
 5' FROM FACE OF BLDG  
 REFER MEP PLANS FOR CONTINUATION  
 FL 18"=597.00 (W)  
 N: 7022767.95  
 E: 2609514.74  
 STA 1+23.70 LINE "ST-9"  
 INSTALL:  
 1-18" 45" HORZ BEND  
 END & CAP 18" STORM DRAIN  
 5' FROM FACE OF BLDG  
 REFER MEP PLANS FOR CONTINUATION  
 FL 18"=596.89 (W)  
 N: 7022667.05  
 E: 2609517.57  
 STA 1+20.97 LINE "ST-11"  
 INSTALL:  
 1-18" 45" HORZ BEND  
 FL 18"=596.70 (E)  
 FL 18"=596.70 (SW)  
 N: 7022767.44  
 E: 2609496.74  
 STA 1+38.97 LINE "ST-11"  
 END & CAP 18" STORM DRAIN  
 5' FROM FACE OF BLDG  
 REFER MEP PLANS FOR CONTINUATION  
 FL 18"=597.00 (W)  
 N: 7022767.95  
 E: 2609514.74  
 STA 1+23.70 LINE "ST-9"  
 INSTALL:  
 1-18" 45" HORZ BEND  
 END & CAP 18" STORM DRAIN  
 5' FROM FACE OF BLDG  
 REFER MEP PLANS FOR CONTINUATION  
 FL 18"=596.89 (W)  
 N: 7022667.05  
 E: 2609517.57  
 STA 1+20.97 LINE "ST-11"  
 INSTALL:  
 1-18" 45" HORZ BEND  
 FL 18"=596.70 (E)  
 FL 18"=596.70 (SW)  
 N: 7022767.44  
 E: 2609496.74  
 STA 1+38.97 LINE "ST-11"  
 END & CAP 18" STORM DRAIN  
 5' FROM FACE OF BLDG  
 REFER MEP PLANS FOR CONTINUATION  
 FL 18"=597.00 (W)  
 N: 7022767.95  
 E: 2609514.74  
 STA 1+23.70 LINE "ST-9"  
 INSTALL:  
 1-18" 45" HORZ BEND  
 END & CAP 18" STORM DRAIN  
 5' FROM FACE OF BLDG  
 REFER MEP PLANS FOR CONTINUATION  
 FL 18"=596.89 (W)  
 N: 7022667.05  
 E: 2609517.57  
 STA 1+20.97 LINE "ST-11"  
 INSTALL:  
 1-18" 45" HORZ BEND  
 FL 18"=596.70 (E)  
 FL 18"=596.70 (SW)  
 N: 7022767.44  
 E: 2609496.74  
 STA 1+38.97 LINE "ST-11"  
 END & CAP 18" STORM DRAIN  
 5' FROM FACE OF BLDG  
 REFER MEP PLANS FOR CONTINUATION  
 FL 18"=597.00 (W)  
 N: 7022767.95  
 E: 2609514.74  
 STA 1+23.70 LINE "ST-9"  
 INSTALL:  
 1-18" 45" HORZ BEND  
 END & CAP 18" STORM DRAIN  
 5' FROM FACE OF BLDG  
 REFER MEP PLANS FOR CONTINUATION  
 FL 18"=596.89 (W)  
 N: 7022667.05  
 E: 2609517.57  
 STA 1+20.97 LINE "ST-11"  
 INSTALL:  
 1-18" 45" HORZ BEND  
 FL 18"=596.70 (E)  
 FL 18"=596.70 (SW)  
 N: 7022767.44  
 E: 2609496.74  
 STA 1+38.97 LINE "ST-11"  
 END & CAP 18" STORM DRAIN  
 5' FROM FACE OF BLDG  
 REFER MEP PLANS FOR CONTINUATION  
 FL 18"=597.00 (W)  
 N: 7022767.95  
 E: 2609514.74  
 STA 1+23.70 LINE "ST-9"  
 INSTALL:  
 1-18" 45" HORZ BEND  
 END & CAP 18" STORM DRAIN  
 5' FROM FACE OF BLDG  
 REFER MEP PLANS FOR CONTINUATION  
 FL 18"=596.89 (W)  
 N: 7022667.05  
 E: 2609517.57  
 STA 1+20.97 LINE "ST-11"  
 INSTALL:  
 1-18" 45" HORZ BEND  
 FL 18"=596.70 (E)  
 FL 18"=596.70 (SW)  
 N: 7022767.44  
 E: 2609496.74  
 STA 1+38.97 LINE "ST-11"  
 END & CAP 18" STORM DRAIN  
 5' FROM FACE OF BLDG  
 REFER MEP PLANS FOR CONTINUATION  
 FL 18"=597.00 (W)  
 N: 7022767.95  
 E: 2609514.74  
 STA 1+23.70 LINE "ST-9"  
 INSTALL:  
 1-18" 45" HORZ BEND  
 END & CAP 18" STORM DRAIN  
 5' FROM FACE OF BLDG  
 REFER MEP PLANS FOR CONTINUATION  
 FL 18"=596.89 (W)  
 N: 7022667.05  
 E: 2609517.57  
 STA 1+20.97 LINE "ST-11"  
 INSTALL:  
 1-18" 45" HORZ BEND  
 FL 18"=596.70 (E)  
 FL 18"=596.70 (SW)  
 N: 7022767.44  
 E: 2609496.74  
 STA 1+38.97 LINE "ST-11"  
 END & CAP 18" STORM DRAIN  
 5' FROM FACE OF BLDG  
 REFER MEP PLANS FOR CONTINUATION  
 FL 18"=597.00 (W)  
 N: 7022767.95  
 E: 2609514.74  
 STA 1+23.70 LINE "ST-9"  
 INSTALL:  
 1-18" 45" HORZ BEND  
 END & CAP 18" STORM DRAIN  
 5' FROM FACE OF BLDG  
 REFER MEP PLANS FOR CONTINUATION  
 FL 18"=596.89 (W)  
 N: 7022667.05  
 E: 2609517.57  
 STA 1+20.97 LINE "ST-11"  
 INSTALL:  
 1-18" 45" HORZ BEND  
 FL 18"=596.70 (E)  
 FL 18"=596.70 (SW)  
 N: 7022767.44  
 E: 2609496.74  
 STA 1+38.97 LINE "ST-11"  
 END & CAP 18" STORM DRAIN  
 5' FROM FACE OF BLDG  
 REFER MEP PLANS FOR CONTINUATION  
 FL 18"=597.00 (W)  
 N: 7022