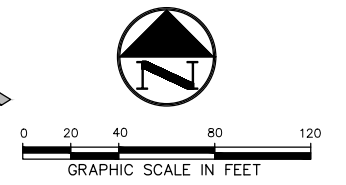


WIDE CONC FLUME, REFER THIS SHEET, CONTRACTOR TO FLUME LOCATION W/ ARCH PRIOR TO CONSTRUCTION.

**!!! WARNING !!!**  
 EXISTING OVERHEAD/UNDERGROUND TELEPHONE, ELECTRIC AND UNDERGROUND GAS AND FIBER OPTIC UTILITIES IN THE AREA. CONTACT UTILITY COMPANIES 48 HOURS PRIOR TO CONSTRUCTION AT 1-800-DIG-TESS.



**NOTE:**  
 REFER TO SHEET C2.2 FOR GRADING & DRAINAGE GENERAL NOTES.

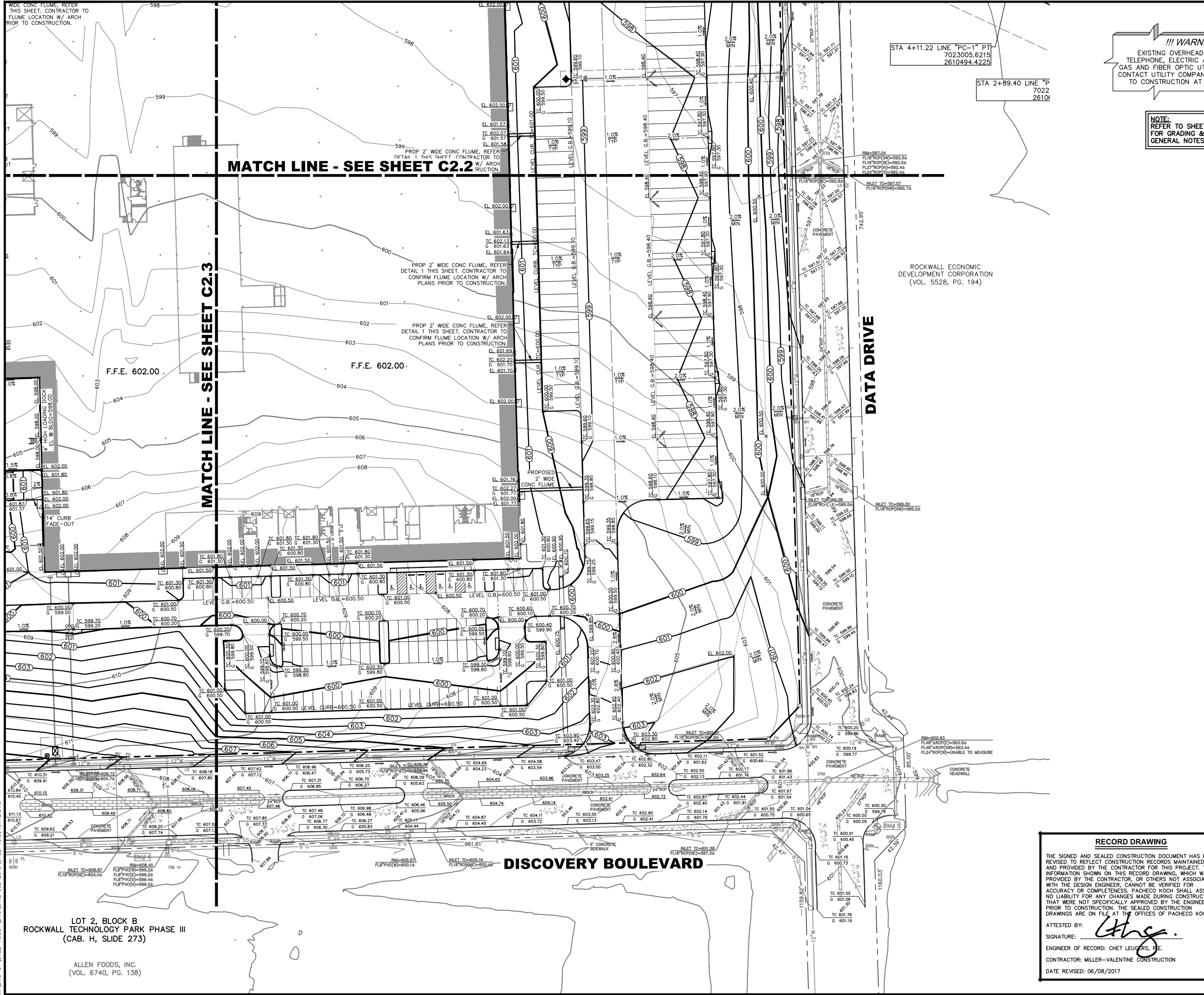
- LEGEND**
- B BOLLARD
  - EM ELECTRIC METER
  - PP POWER POLE
  - LS LIGHT STANDARD
  - WM WATER METER
  - WV WATER VALVE
  - RV FIRE HYDRANT
  - CO CLEANOUT
  - MH MANHOLE
  - TSC TRAFFIC SIGNAL CONTROL
  - TSP TRAFFIC SIGNAL POLE
  - TELE TELEPHONE BOX
  - FL FLOOD LIGHT
  - FP FLAG POLE
  - SI TRAFFIC SIGN
  - IRS 1/2-INCH IRON ROD
  - W/PACHECO KOCH CAP SET
  - (C.M.) CONTROLLING MONUMENT
  - PROPERTY LINE
  - FENCE
  - OH OVERHEAD UTILITY LINE
  - 613 EXIST CONTOUR
  - 612.39 EXIST SPOT ELEVATION
  - TC 612.39 EXIST TOP OF CURB ELEVATION
  - G 611.89 EXIST GUTTER ELEVATION
  - (400) PROPOSED CONTOUR
  - TC 614.50 PROPOSED TOP OF CURB ELEVATION
  - G 614.00 PROPOSED GUTTER ELEVATION
  - EL 614.25 PROPOSED SPOT ELEVATION
  - M.G. MATCH EXISTING GRADE
  - TW 620.50 PROPOSED TOP OF WALL ELEVATION
  - EL 614.00 PROPOSED GROUND ELEVATION AT BOTTOM OF WALL
  - X PROPOSED SWALE
  - X PROPOSED FENCE
  - PROPOSED DRAINAGE FLOW DIRECTION
  - GRADE BREAK

**MATCH LINE - SEE SHEET C2.2**

**MATCH LINE - SEE SHEET C2.3**

**DATA DRIVE**

**DISCOVERY BOULEVARD**



STA 4+11.22 LINE "PC-1" PT  
 7023005.6215  
 2610494.4225

STA 2+89.40 LINE "P"  
 7022  
 26104

ROCKWALL ECONOMIC DEVELOPMENT CORPORATION  
 (VOL. 5528, PG. 194)

**BENCH MARK LIST**

CITY BM #19	CITY OF ROCKWALL MONUMENT FOUND AT THE NORTHWEST INTERSECTION OF DIAMOND WAY AND SILVER VIEW. ELEV=600.687
BM# 2	" X " CUT SET ON 1314'± EAST OF CORPORATE CROSSING AND DISCOVERY BLVD. ON THE NORTHEAST CORNER OF CURB INLET ON NORTH SIDE OF DISCOVERY BLVD., 100'± NORTHEAST OF FH W/YELLOW TOP AND 145'± NORTHWEST OF A LIGHT STANDARD. ELEV=603.50
BM# 4	" X " CUT SET ON SOUTHEAST CORNER OF CURB INLET ON SOUTH SIDE OF DISCOVERY BLVD., 633'± WEST OF INTERSECTION OF DISCOVERY BLVD. AND DATA DRIVE, 48'± WEST OF A SANITARY SEWER MANHOLE AND 10'± NORTHEAST OF A WATER VALVE. ELEV=608.91
BM# 5	" X " CUT SET ON SOUTHEAST CORNER OF DISCOVERY BLVD. AND DATA DRIVE IN SIDEWALK AT RAMP, 20'± NORTHEAST OF STOP SIGN, 20'± SOUTHWEST OF THE END OF GUARD-RAIL AND 60'± SOUTHEAST OF A STORM SEWER MANHOLE IN CENTERLINE OF INTERSECTION. ELEV=600.46
BM# 7	" X " CUT SET AT THE NORTHEAST INTERSECTION OF DATA DRIVE AND CAPITAL BLVD. ON THE EAST CURB OF DATA DRIVE, 20'± EAST OF THE STORM SEWER MANHOLE IN CENTERLINE OF INTERSECTION AND 14'± SOUTH OF THE END OF A GUARD-RAIL. ELEV=603.52
BM# 8	" X " CUT SET ON EDGE OF CONCRETE ON THE NORTH SIDE OF CAPITAL BLVD., 900'± FROM INTERSECTION OF DATA DRIVE AND CAPITAL BLVD., 134'± NORTHEAST OF STORM SEWER MANHOLE ON CENTERLINE OF CAPITAL BLVD., AND 35'± NORTHWEST OF A FIRE HYDRANT W/ YELLOW TOP ON SOUTHSIDE OF CAPITAL BLVD. ELEV=592.77
BM# 9	" X " CUT SET 1397'± EAST OF INTERSECTION OF CORPORATE CROSSING AND CAPITAL BLVD. ON THE SOUTH SIDE OF CAPITAL BLVD. ON SOUTHWEST CORNER OF CURB INLET, 225'± NORTHEAST OF HEADWALL AND 63'± SOUTHWEST OF A LIGHT STANDARD. ELEV=587.29

**RECORD DRAWING**

THE SIGNED AND SEALED CONSTRUCTION DOCUMENT HAS BEEN REVISED TO REFLECT CONSTRUCTION RECORDS MAINTAINED AND PROVIDED BY THE CONTRACTOR FOR THIS PROJECT. THE INFORMATION SHOWN ON THIS RECORD DRAWING, WHICH WAS PROVIDED BY THE CONTRACTOR, OR OTHERS NOT ASSOCIATED WITH THE DESIGN ENGINEER, CANNOT BE VERIFIED FOR ACCURACY OR COMPLETENESS. PACHECO KOCH SHALL ASSUME NO LIABILITY FOR ANY CHANGES MADE DURING CONSTRUCTION THAT WERE NOT SPECIFICALLY APPROVED BY THE ENGINEER PRIOR TO CONSTRUCTION. THE SEALED CONSTRUCTION DRAWINGS ARE ON FILE AT THE OFFICES OF PACHECO KOCH.

ATTESTED BY: *[Signature]*  
 SIGNATURE: \_\_\_\_\_  
 ENGINEER OF RECORD: CHET LEUGERS, P.E.  
 CONTRACTOR: MILLER-VALENTINE CONSTRUCTION  
 DATE REVISED: 06/08/2017

NO.	DATE	REVISION
06/09/2017	RECORD DRAWINGS	

**Pacheco Koch**  
 7557 RAMBLER ROAD, SUITE 1400  
 DALLAS, TX 75231 972.235.3031  
 TX REG. ENGINEERING FIRM F-14439  
 TX REG. SURVEYING FIRM LS-10193805

GRADING PLAN				
ROCKWALL MANUFACTURING FACILITY				
LOT 1, BLOCK A, ROCKWALL TECHNOLOGY PARK, PHASE IV				
CITY OF ROCKWALL, ROCKWALL COUNTY, TEXAS				
DESIGN	DRAWN	DATE	SCALE	NOTES
CTL	RHB	JULY 2016	1"=40'	
				<b>C2.4</b>

LOT 2, BLOCK B  
 ROCKWALL TECHNOLOGY PARK PHASE III  
 (CAB. H, SLIDE 273)

ALLEN FOODS, INC.  
 (VOL. 6740, PG. 138)