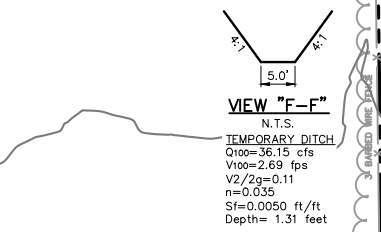
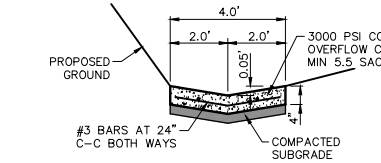


2' WIDE CONC. FLUME DETAIL
NOT TO SCALE



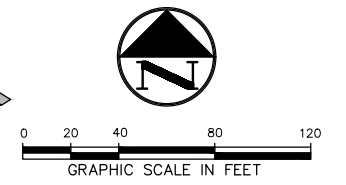
VIEW "F-F"
N.T.S.
TEMPORARY DITCH
Q100=36.15 cfs
V100=2.69 fps
V2/2g=0.11
n=0.035
Sf=0.0050 ft/ft
Depth=1.31 feet



4' WIDE PILOT CHANNEL DETAIL
NOT TO SCALE

ROCKWALL ECONOMIC DEVELOPMENT CORPORATION (INST. NO. 20130000496918)

!!! WARNING !!!
EXISTING OVERHEAD/UNDERGROUND TELEPHONE, ELECTRIC AND UNDERGROUND GAS AND FIBER OPTIC UTILITIES IN THE AREA. CONTACT UTILITY COMPANIES 48 HOURS PRIOR TO CONSTRUCTION AT 1-800-DIG-TESS.



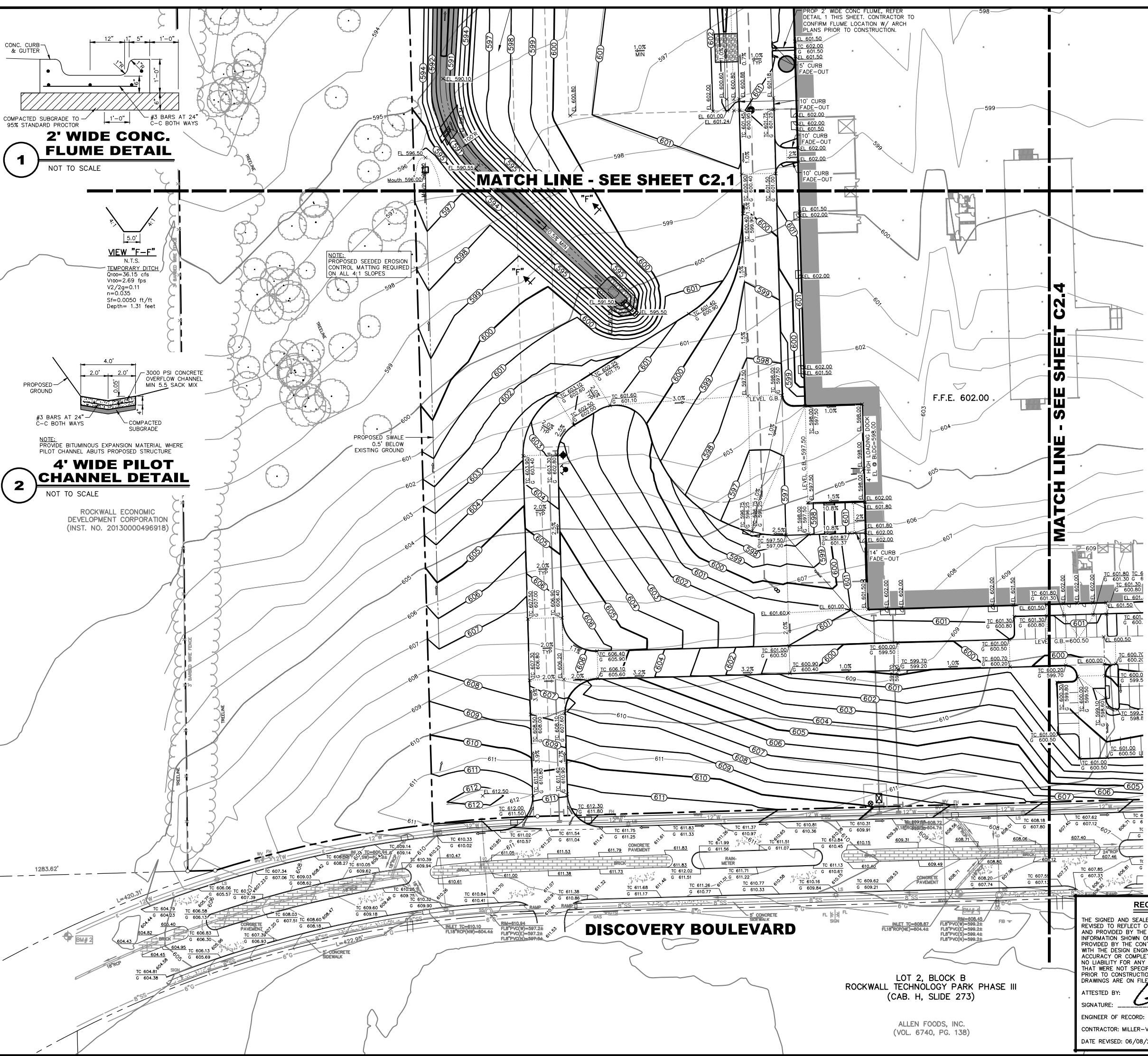
NOTE:
REFER TO SHEET C2.2 FOR GRADING & DRAINAGE GENERAL NOTES.

LEGEND

B	BOLLARD
EM	ELECTRIC METER
PP	POWER POLE
LS	LIGHT STANDARD
WM	WATER METER
WV	WATER VALVE
ICV	IRRIGATION CONTROL VALVE
FH	FIRE HYDRANT
CO	CLEANOUT
MH	MANHOLE
TSC	TRAFFIC SIGNAL CONTROL
TSP	TRAFFIC SIGNAL POLE
TELE	TELEPHONE BOX
FL	FLOOD LIGHT
FP	FLAG POLE
SI	TRAFFIC SIGN
IRS	1/2-INCH IRON ROD
W/P	W/"PACHECO KOCH" CAP SET
(C.M.)	CONTROLLING MONUMENT
---	PROPERTY LINE
- - -	OVERHEAD UTILITY LINE
---	EXIST. CONTOUR
---	EXIST. SPOT ELEVATION
---	EXIST. TOP OF CURB ELEVATION
---	EXIST. GUTTER ELEVATION
(400)	PROPOSED CONTOUR
TC 614.50	PROPOSED TOP OF CURB ELEVATION
G 614.00	PROPOSED GUTTER ELEVATION
EL 614.25	PROPOSED SPOT ELEVATION
M.G.	MATCH EXISTING GRADE
TW 620.50	PROPOSED TOP OF WALL ELEVATION
EL 614.00	PROPOSED GROUND ELEVATION AT BOTTOM OF WALL
---	PROPOSED SWALE
---	PROPOSED FENCE
---	PROPOSED DRAINAGE FLOW DIRECTION
---	GRADE BREAK

BENCH MARK LIST

CITY BM #19	CITY OF ROCKWALL MONUMENT FOUND AT THE NORTHWEST INTERSECTION OF DIAMOND WAY AND SILVER VIEW. ELEV=600.687
BM# 2	" X " CUT SET ON 1314'± EAST OF CORPORATE CROSSING AND DISCOVERY BLVD. ON THE NORTHEAST CORNER OF CURB INLET ON NORTH SIDE OF DISCOVERY BLVD., 100'± NORTHEAST OF FH W/YELLOW TOP AND 145'± NORTHWEST OF A LIGHT STANDARD. ELEV=603.50
BM# 4	" X " CUT SET ON SOUTHEAST CORNER OF CURB INLET ON SOUTH SIDE OF DISCOVERY BLVD., 633'± WEST OF INTERSECTION OF DISCOVERY BLVD. AND DATA DRIVE, 48'± WEST OF A SANITARY SEWER MANHOLE AND 10'± NORTHEAST OF A WATER VALVE. ELEV=608.91
BM# 5	" X " CUT SET ON SOUTHEAST CORNER OF DISCOVERY BLVD. AND DATA DRIVE ON SIDEWALK AT RAMP, 20'± NORTHEAST OF STOP SIGN, 20'± SOUTHWEST OF THE END OF GUARD-RAIL AND 60'± SOUTHWEST OF A STORM SEWER MANHOLE IN CENTERLINE OF INTERSECTION. ELEV=600.46
BM# 7	" X " CUT SET AT THE NORTHEAST INTERSECTION OF DATA DRIVE AND CAPITAL BLVD. ON THE EAST CURB OF DATA DRIVE, 20'± EAST OF THE STORM SEWER MANHOLE IN CENTERLINE OF INTERSECTION AND 14'± SOUTH OF THE END OF A GUARD-RAIL. ELEV=603.52
BM# 8	" X " CUT SET ON EDGE OF CONCRETE ON THE NORTH SIDE OF CAPITAL BLVD., 900'± FROM INTERSECTION OF DATA DRIVE AND CAPITAL BLVD., 134'± NORTHEAST OF STORM SEWER MANHOLE ON CENTERLINE OF CAPITAL BLVD., AND 35'± NORTHWEST OF A FIRE HYDRANT W/ YELLOW TOP ON SOUTHSIDE OF CAPITAL BLVD. ELEV=592.77
BM# 9	" X " CUT SET 1397'± EAST OF INTERSECTION OF CORPORATE CROSSING AND CAPITAL BLVD. ON THE SOUTH SIDE OF CAPITAL BLVD. ON SOUTHWEST CORNER OF CURB INLET, 225'± NORTHEAST OF HEADWALL AND 63'± SOUTHWEST OF A LIGHT STANDARD. ELEV=587.29



DISCOVERY BOULEVARD

LOT 2, BLOCK B
ROCKWALL TECHNOLOGY PARK PHASE III
(CAB. H, SLIDE 273)

ALLEN FOODS, INC.
(VOL. 6740, PG. 138)

RECORD DRAWING

THE SIGNED AND SEALED CONSTRUCTION DOCUMENT HAS BEEN REVISED TO REFLECT CONSTRUCTION RECORDS MAINTAINED AND PROVIDED BY THE CONTRACTOR FOR THIS PROJECT. THE INFORMATION SHOWN ON THIS RECORD DRAWING, WHICH WAS PROVIDED BY THE CONTRACTOR, OR OTHERS NOT ASSOCIATED WITH THE DESIGN ENGINEER, CANNOT BE VERIFIED FOR ACCURACY OR COMPLETENESS. PACHECO KOCH SHALL ASSUME NO LIABILITY FOR ANY CHANGES MADE DURING CONSTRUCTION THAT WERE NOT SPECIFICALLY APPROVED BY THE ENGINEER PRIOR TO CONSTRUCTION. THE SEALED CONSTRUCTION DRAWINGS ARE ON FILE AT THE OFFICES OF PACHECO KOCH.

ATTESTED BY: *[Signature]*
SIGNATURE:
ENGINEER OF RECORD: CHET LEUGERS, P.E.
CONTRACTOR: MILLER-VALENTE CONSTRUCTION
DATE REVISED: 06/08/2017

NO.	DATE	REVISION
06/09/2017	RECORD DRAWINGS	
Pacheco Koch 7557 RAMBLER ROAD, SUITE 1400 DALLAS, TX 75231 972.235.3031 TX REG. ENGINEERING FIRM F-14439 TX REG. SURVEYING FIRM LS-10193805		
GRADING PLAN		
ROCKWALL MANUFACTURING FACILITY		
LOT 1, BLOCK A, ROCKWALL TECHNOLOGY PARK, PHASE IV		
CITY OF ROCKWALL, ROCKWALL COUNTY, TEXAS		
DESIGN	DRAWN	DATE
CTL	RHB	JULY 2016
SCALE	NOTES	FILE
1"=40'		
		NO.
		C2.3

NELSON 6/14/2017 11:51 AM M:\DWG-37\3782-16.05A\DWG\CIVIL C3D 2015\3782-16.05A\GRAD.DWG

Rockwall Manufacturing Facility