

ROCKWALL ECONOMIC DEVELOPMENT CORPORATION
(VOL. 3495, PG. 314)
48.584 ACRES
(2,116,334 SF)

ROCKWALL ECONOMIC DEVELOPMENT CORPORATION
(INST. NO. 20130000497020)

!!! WARNING !!!
EXISTING OVERHEAD/UNDERGROUND TELEPHONE, ELECTRIC AND UNDERGROUND GAS AND FIBER OPTIC UTILITIES IN THE AREA. CONTACT UTILITY COMPANIES 48 HOURS PRIOR TO CONSTRUCTION AT 1-800-DIG-TESS.



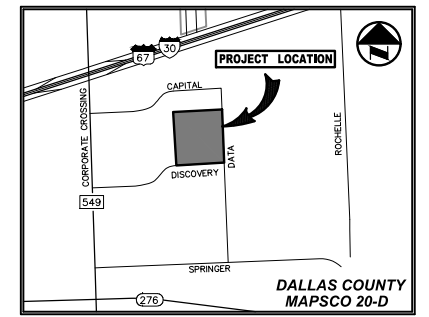
0 20 40 80 120
GRAPHIC SCALE IN FEET

LEGEND

- BL BOLLARD
- EM ELECTRIC METER
- PP POWER POLE
- LS LIGHT STANDARD
- WM WATER METER
- WV WATER VALVE
- ICV IRRIGATION CONTROL VALVE
- FH FIRE HYDRANT
- CC CLEANOUT
- MH MANHOLE
- TSC TRAFFIC SIGNAL CONTROL
- TSP TRAFFIC SIGNAL POLE
- TELE TELEPHONE BOX
- FL FLOOD LIGHT
- FP FLAG POLE
- TR TRAFFIC SIGN
- IRS 1/2" IRON ROD
- (C.M.) W/"PACHECO KOCH" CAP SET
- PROPERTY LINE
- - - FENCE
- X PROPOSED FENCE

ALL DIMENSIONS ARE TO BACK-OF-CURB UNLESS OTHERWISE NOTED.

NOTE: REFER TO SHEET C1.1 FOR GENERAL NOTES

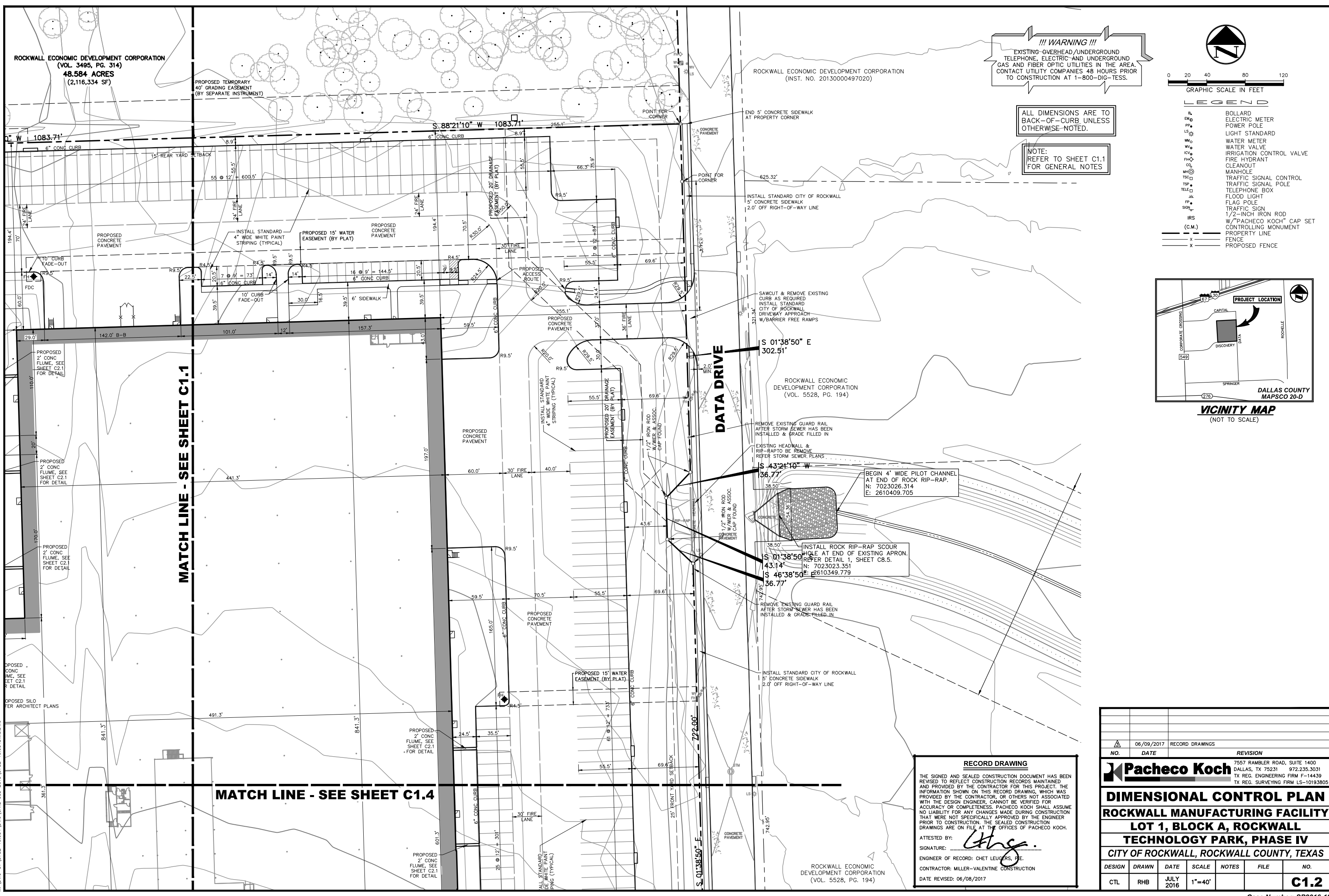


VICINITY MAP
(NOT TO SCALE)

MATCH LINE - SEE SHEET C1.1

MATCH LINE - SEE SHEET C1.4

DATA DRIVE



S 01°38'50" E
302.51'

S 43°21'10" W
36.77'

S 01°38'50" E
43.14'

S 46°38'50" E
36.77'

ROCKWALL ECONOMIC DEVELOPMENT CORPORATION
(VOL. 5528, PG. 194)

RECORD DRAWING

THE SIGNED AND SEALED CONSTRUCTION DOCUMENT HAS BEEN REVISED TO REFLECT CONSTRUCTION RECORDS MAINTAINED AND PROVIDED BY THE CONTRACTOR FOR THIS PROJECT. THE INFORMATION SHOWN ON THIS RECORD DRAWING, WHICH WAS PROVIDED BY THE CONTRACTOR, OR OTHERS NOT ASSOCIATED WITH THE DESIGN ENGINEER, CANNOT BE VERIFIED FOR ACCURACY OR COMPLETENESS. PACHECO KOCH SHALL ASSUME NO LIABILITY FOR ANY CHANGES MADE DURING CONSTRUCTION THAT WERE NOT SPECIFICALLY APPROVED BY THE ENGINEER PRIOR TO CONSTRUCTION. THE SEALED CONSTRUCTION DRAWINGS ARE ON FILE AT THE OFFICES OF PACHECO KOCH.

ATTESTED BY: *[Signature]*
SIGNATURE: _____
ENGINEER OF RECORD: CHET LEUGERS, P.E.
CONTRACTOR: MILLER-VALENTINE CONSTRUCTION
DATE REVISED: 06/08/2017

| | | |
|--|-------------|-----------------|
| NO. | DATE | REVISION |
| | 06/09/2017 | RECORD DRAWINGS |
| Pacheco Koch | | |
| 7557 RAMBLER ROAD, SUITE 1400 DALLAS, TX 75231 972.235.3031 TX REG. ENGINEERING FIRM F-14439 TX REG. SURVEYING FIRM LS-10193805 | | |
| DIMENSIONAL CONTROL PLAN | | |
| ROCKWALL MANUFACTURING FACILITY | | |
| LOT 1, BLOCK A, ROCKWALL | | |
| TECHNOLOGY PARK, PHASE IV | | |
| CITY OF ROCKWALL, ROCKWALL COUNTY, TEXAS | | |
| DESIGN | DRAWN | DATE |
| CTL | RHB | JULY 2016 |
| SCALE | NOTES | FILE |
| 1"=40' | | |
| NO. | C1.2 | |

6/14/2017 11:49 AM
M:\CNC-37\3782-16.05\DWG\CIVIL C3D 2015\3782-16.05\DWG.DWG

Rockwall Manufacturing Facility