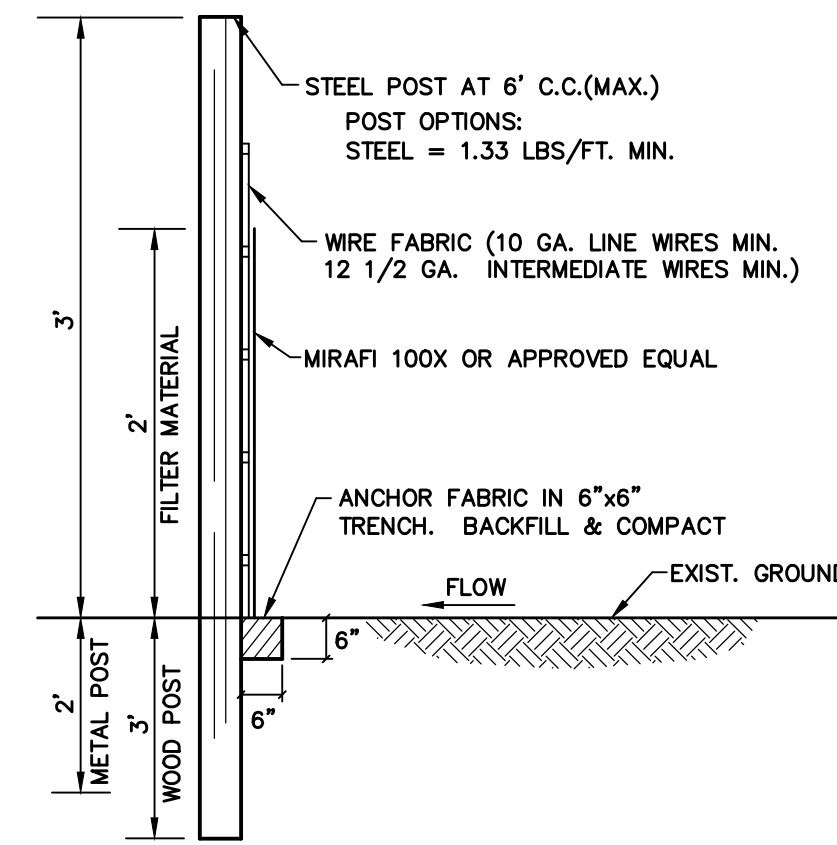
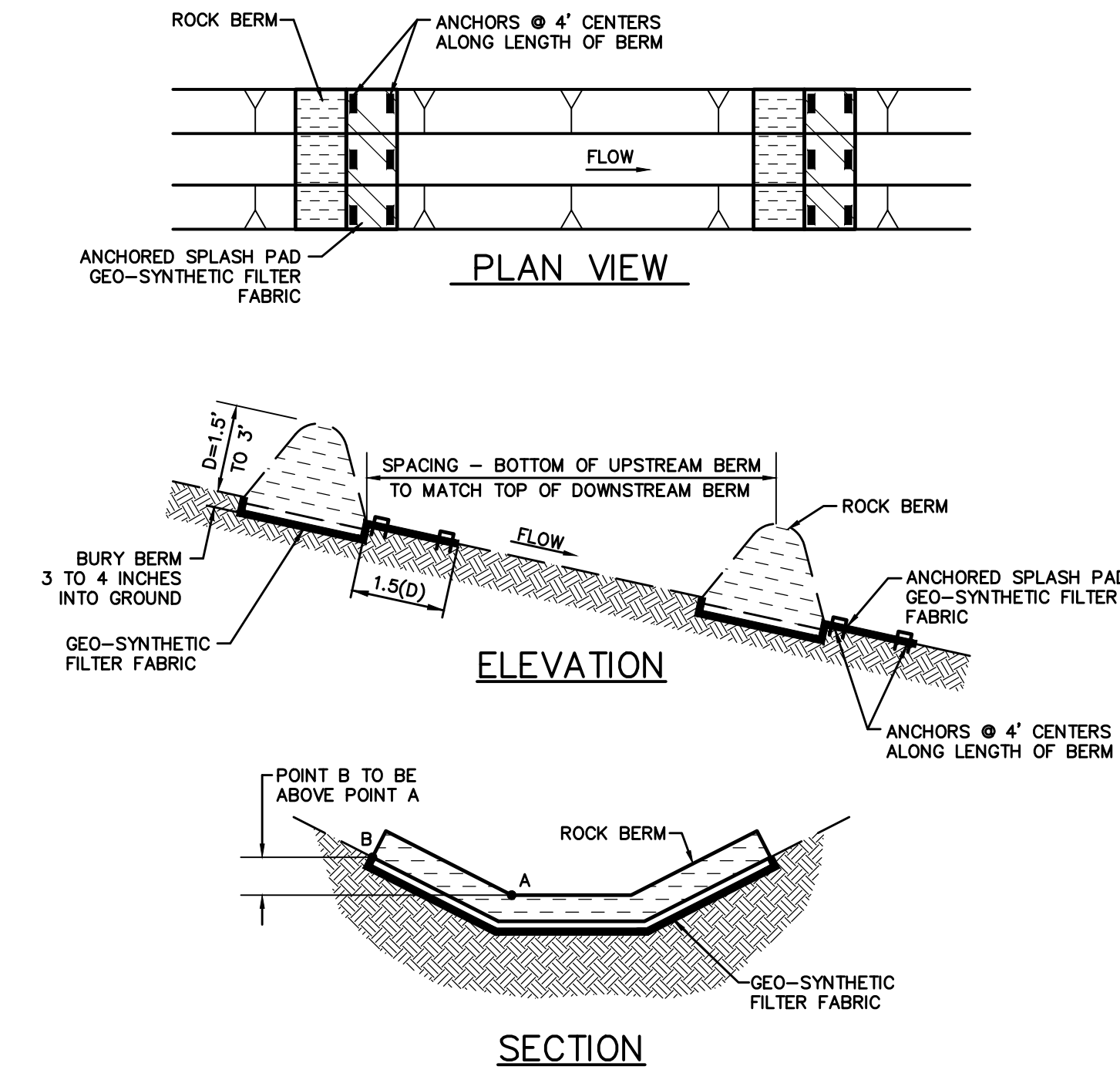


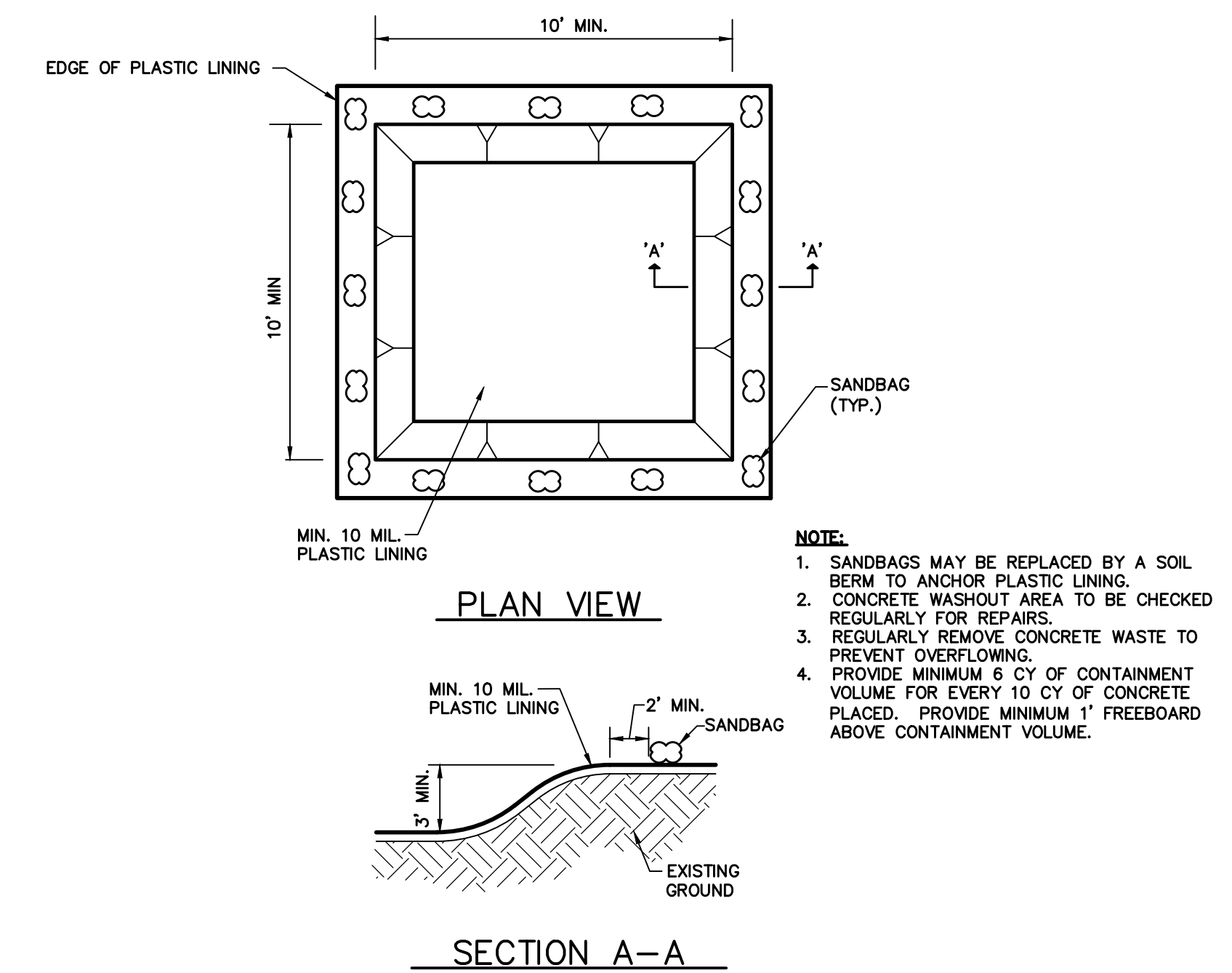
1 STABILIZED CONSTRUCTION ENTRANCE
NOT TO SCALE



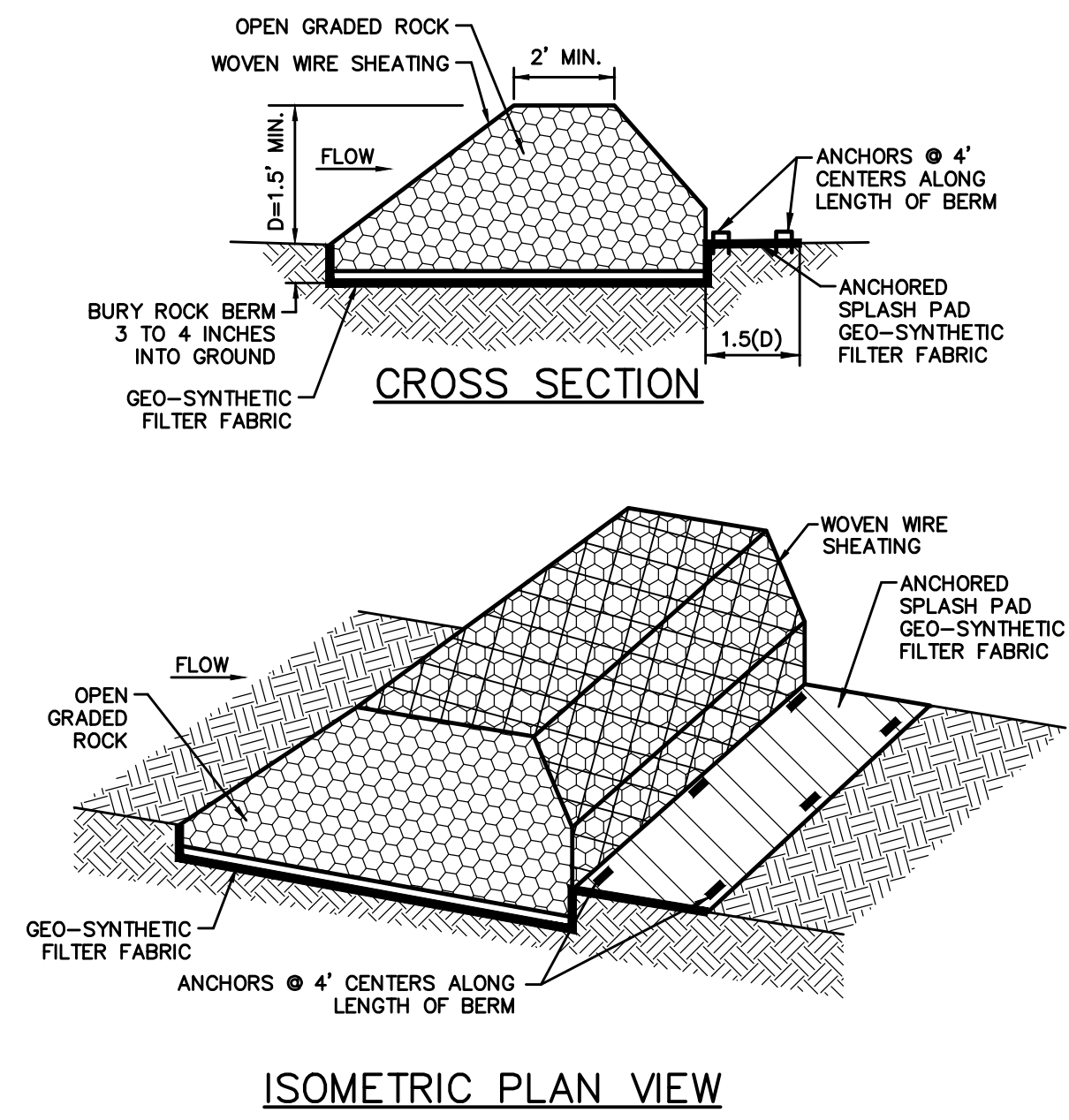
2 SILT FENCE
NOT TO SCALE



3 CHECK DAMS
NOT TO SCALE

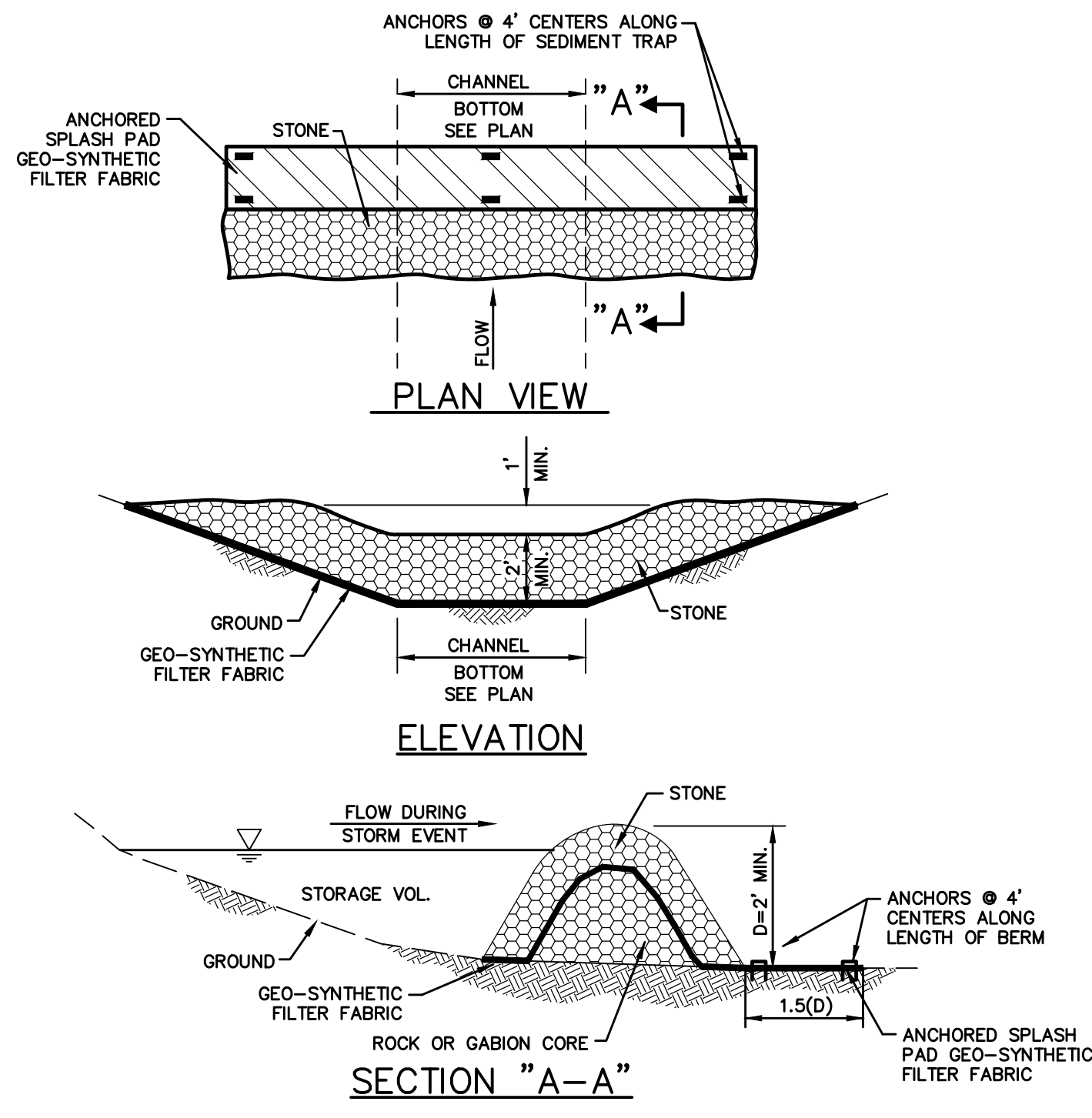


4 CONCRETE WASHOUT AREA
NOT TO SCALE



5 ROCK BERM
NOT TO SCALE

- NOTES :
1. USE ONLY OPEN GRADED ROCK 4-8 INCHES IN DIAMETER FOR STREAM FLOW CONDITION. USE OPEN GRADED ROCK 3-5 INCHES IN DIAMETER FOR OTHER CONDITIONS.
 2. ROCK BERM SHALL BE SECURED WITH A WOVEN WIRE SHEATHING HAVING A MAX. OPENING OF 1 INCH AND A MIN. WIRE SIZE OF 20 GAUGE AND SHALL BE BURIED IN A TRENCH APPROX. 3 TO 4 INCHES DEEP.
 3. THE ROCK BERM SHALL BE INSPECTED WEEKLY OR AFTER EACH RAIN EVENT AND SHALL BE REPLACED WHEN THE STRUCTURE CEASED TO FUNCTION AS INTENDED DUE TO SILT ACCUMULATION AMONG THE ROCKS, WASH OUT, CONSTRUCTION TRAFFIC DAMAGE, ETC.
 4. WHEN SILT REACHES A DEPTH EQUAL TO ONE-THIRD OF THE HEIGHT OF THE BERM OR ONE FOOT, WHICHEVER IS LESS, THE SILT SHALL BE REMOVED AND DISPOSED OF PROPERLY.
 5. WHEN THE SITE IS COMPLETELY STABILIZED, THE BERM AND ACCUMULATED SILT SHALL BE REMOVED AND DISPOSED OF IN AN APPROVED MANNER.
 6. ROCK BERM SHOULD BE USED AS CHECK DAMS FOR CONCENTRATED FLOW AND ARE NOT INTENDED FOR USE IN PERIMETER PROTECTION.



6 STONE OUTLET SEDIMENT TRAP
NOT TO SCALE

RECORD DRAWING

THE SIGNED AND SEALED CONSTRUCTION DOCUMENT HAS BEEN REVISED TO REFLECT CONSTRUCTION RECORDS MAINTAINED AND PROVIDED BY THE CONTRACTOR FOR THIS PROJECT. THE INFORMATION SHOWN ON THIS RECORD DRAWING, WHICH WAS PROVIDED BY THE CONTRACTOR, OR OTHERS NOT ASSOCIATED WITH THE DESIGN ENGINEER, CANNOT BE VERIFIED FOR ACCURACY OR COMPLETENESS. PACHECO KOCH SHALL ASSUME NO LIABILITY FOR ANY CHANGES MADE DURING CONSTRUCTION THAT WERE NOT SPECIFICALLY APPROVED BY THE ENGINEER PRIOR TO CONSTRUCTION. THE SEALED CONSTRUCTION DRAWINGS ARE ON FILE AT THE OFFICES OF PACHECO KOCH.

ATTESTED BY: *[Signature]*
SIGNATURE: *[Signature]*
ENGINEER OF RECORD: CHET LEUERS, P.E.
CONTRACTOR: R.A. RAMOS GENERAL CONTRACTORS, INC.
DATE REVISED: 09/18/2017

NO.	DATE	REVISION
1	09/18/2017	RECORD DRAWINGS

Pacheco Koch
7557 RAMBLER ROAD, SUITE 1400
DALLAS, TX 75231 972.235.3031
TX REG. ENGINEERING FIRM F-14439
TX REG. SURVEYING FIRM LS-10193805

EROSION CONTROL DETAILS
ROCKWALL REGIONAL DETENTION POND
LOT 1, BLOCK B
ROCKWALL TECHNOLOGY PARK PHASE IV
CITY OF ROCKWALL, ROCKWALL COUNTY, TEXAS

DESIGN	DRAWN	DATE	SCALE	NOTES	FILE	NO.
CTL	RHB	AUG 2016	N.T.S.			C7.2

NELSON
 9/18/2017 9:33 AM
 M:\VWC-37\3782-16\166\DWG\CIVIL C-3D 2015\3782-16\166EP.DWG

ROCKWALL REGIONAL DETENTION POND, ROCKWALL, TEXAS