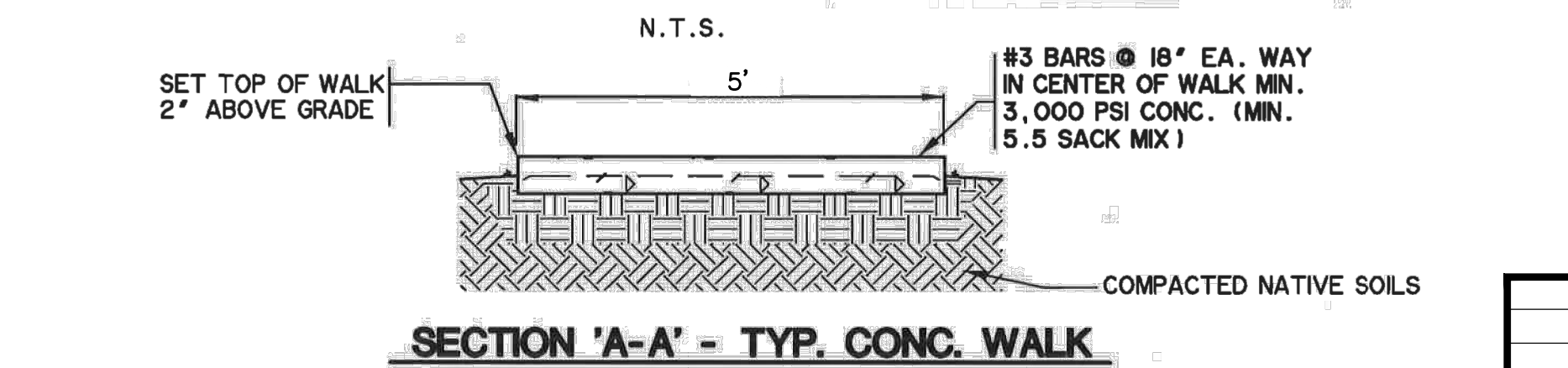
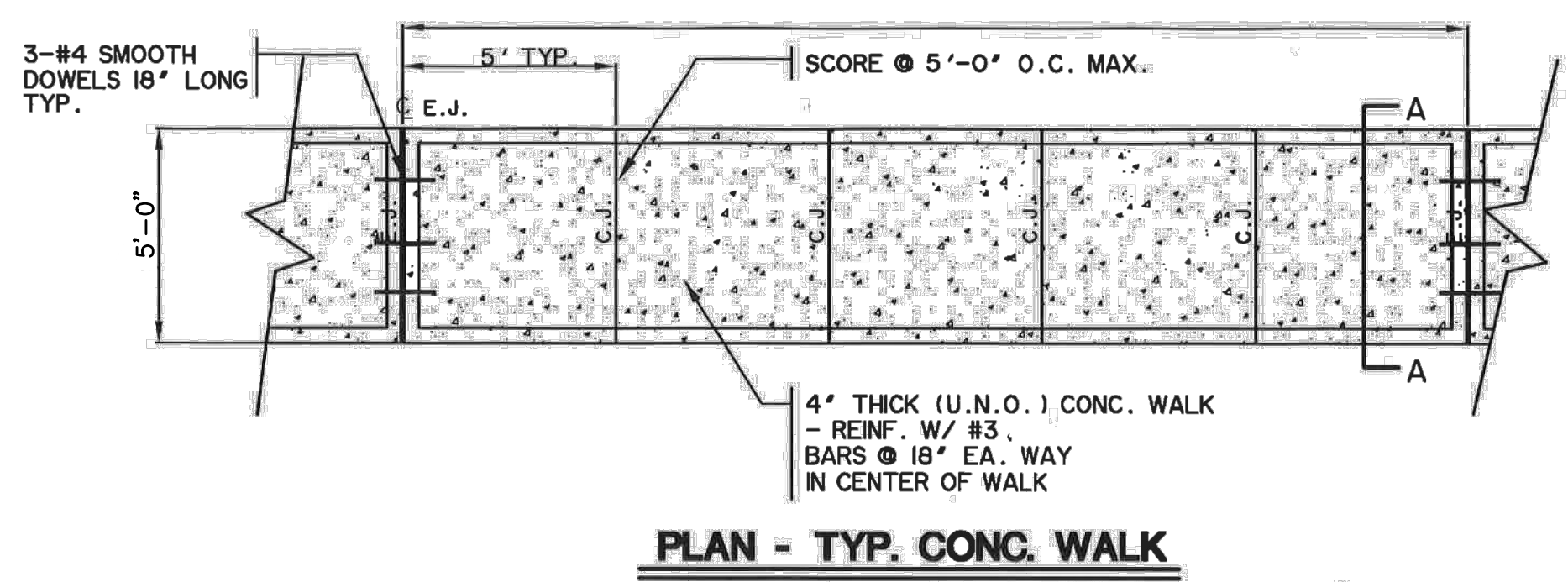
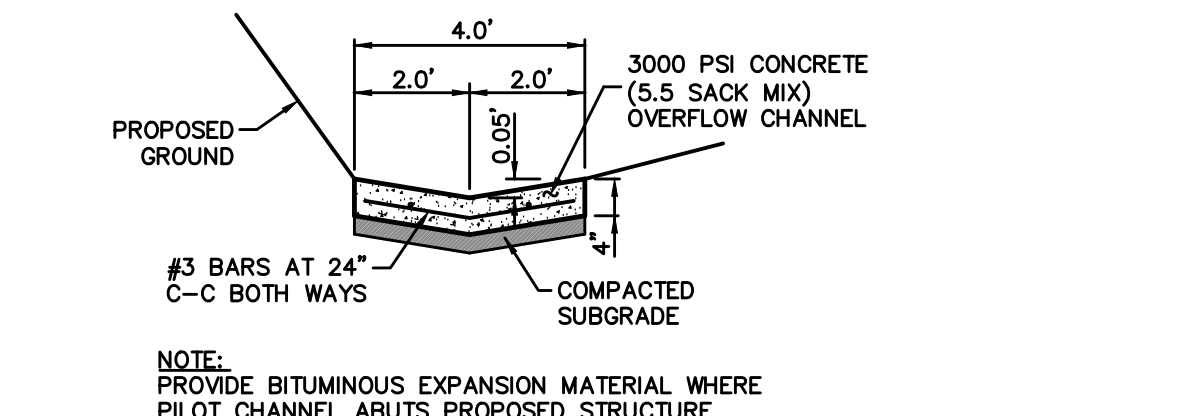
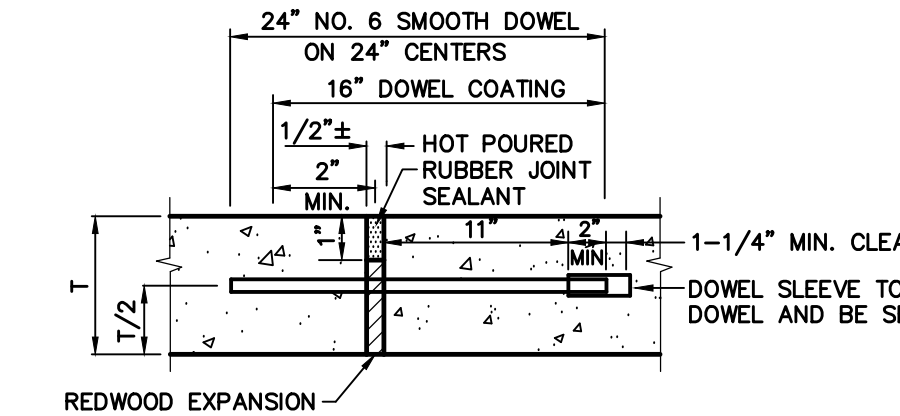
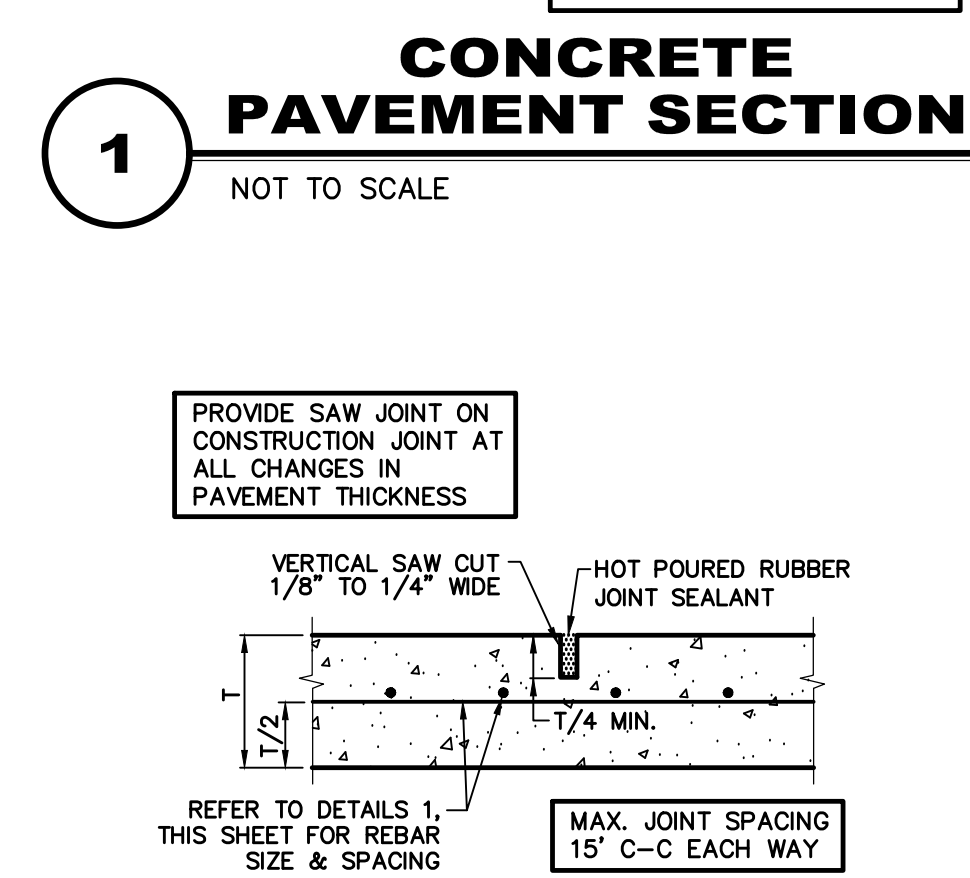
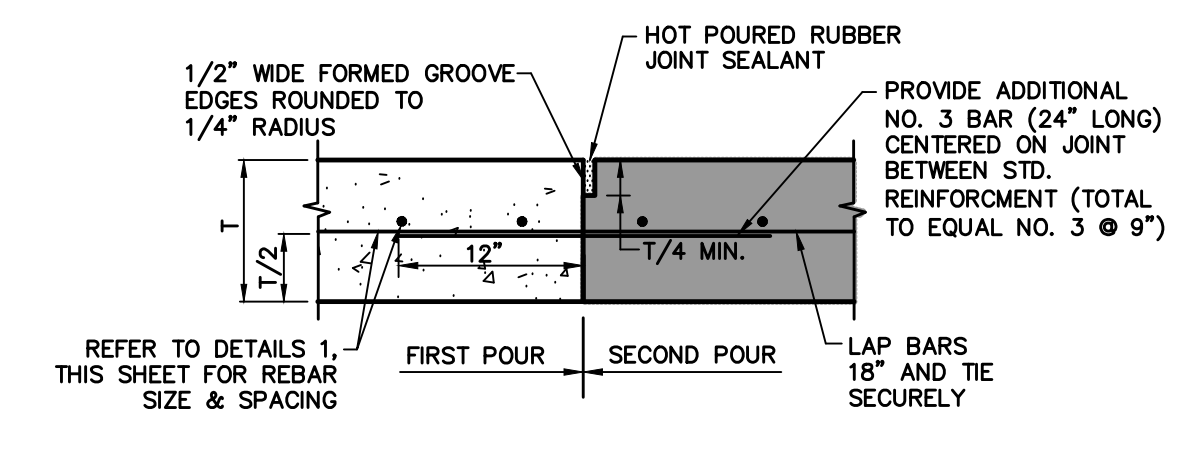
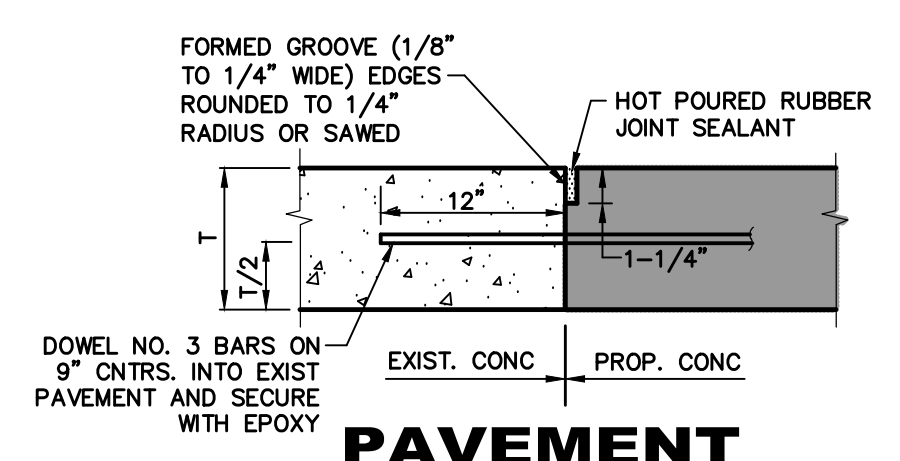
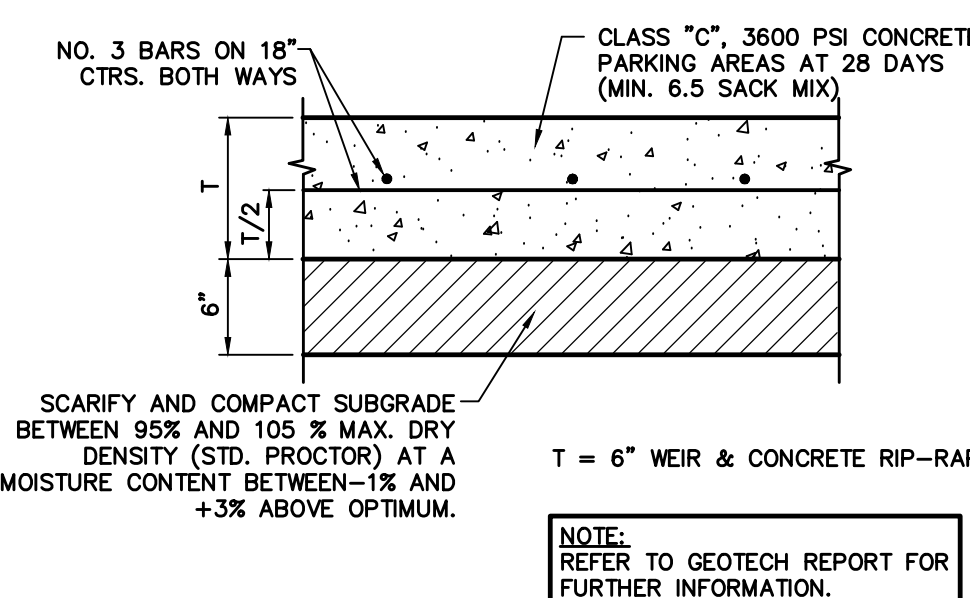
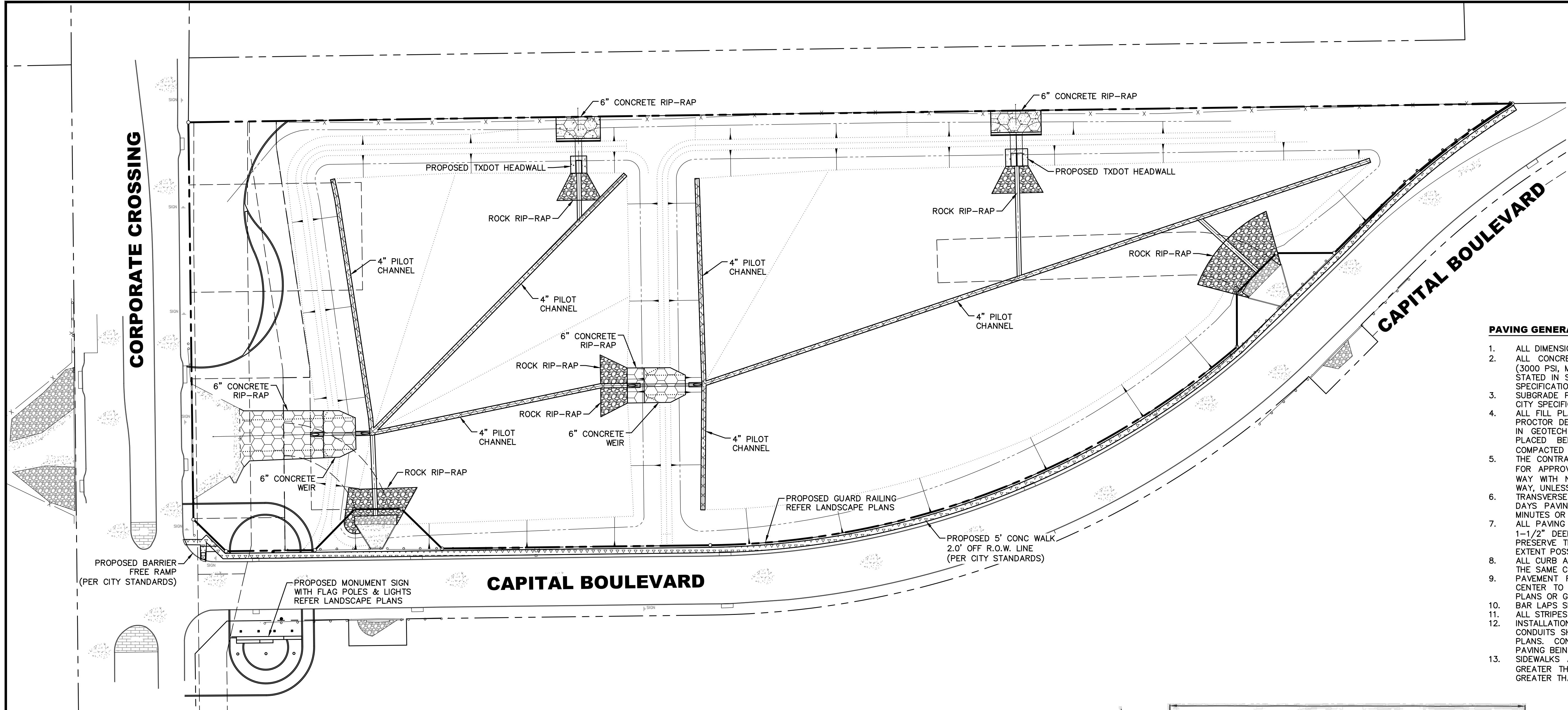


LEGEND

	PROPERTY LINE
	PILOT CHANNEL
	4" REINFORCED CONCRETE (CLASS "A", 3000 PSI) (MIN. 5.5 SACK MIX)
	CONCRETE WEIR & CONCRETE RIP-RAP (CLASS "C", 3600 PSI) (MIN. 6.5 SACK MIX)
	PROPOSED STANDARD CITY OF ROCKWALL CONCRETE WALK REFER CITY STANDARD DETAILS

- PAVING GENERAL NOTES**
- ALL DIMENSIONS ARE FROM BACK OF CURB UNLESS OTHERWISE NOTED.
 - ALL CONCRETE SHALL CONFORM TO NCTCOG (3RD EDITION), CLASS "A" (3000 PSI, MIN. 5.5 SACK MIX) UNLESS OTHERWISE SHOWN ON THESE PLANS, STATED IN STANDARD CITY SPECIFICATIONS OR STATED IN TXDOT STANDARD SPECIFICATIONS.
 - SUBGRADE PREPARATION IN RIGHT OF WAY SHALL CONFORM TO STANDARD CITY SPECIFICATIONS OR TXDOT STANDARD SPECIFICATIONS.
 - ALL FILL PLACED UNDER PAVING SHALL BE COMPACTED TO 95% STANDARD PROCTOR DENSITY IN 6 INCH LIFTS, UNLESS OTHERWISE NOTED, OR STATED IN GEOTECH REPORT. REFER TO STRUCTURAL SPECIFICATIONS FOR FILL PLACED BENEATH BUILDING AREAS. ALL OTHER FILL AREAS TO BE COMPACTED TO 95% STANDARD PROCTOR USING A SHEEP'S FOOT ROLLER. THE CONTRACTOR SHALL SUBMIT A JOINT SPACING PLAN TO THE ENGINEER FOR APPROVAL. EXPANSION JOINT SPACING SHALL BE 90' MAXIMUM EACH WAY WITH NO KEYWAYS AND SAWED DUMMY JOINTS SHALL BE 15' EACH WAY UNLESS OTHERWISE NOTED.
 - TRANSVERSE CONSTRUCTION JOINTS SHALL BE USED AT THE END OF EACH DAYS PAVING AND WHERE INTERRUPTIONS SUSPEND OPERATIONS FOR 30 MINUTES OR MORE.
 - ALL PAVING TO BE REMOVED SHALL BE SAWCUT TO A NEAT LINE, MINIMUM 1-1/2" DEEP, AND THE PAVEMENT REMOVED IN SUCH A MANNER AS TO PRESERVE THE EXISTING TRANSVERSE REINFORCING STEEL TO THE MAXIMUM EXTENT POSSIBLE.
 - ALL CURB AND GUTTER SHALL BE INTEGRAL WITH THE PAVEMENT AND HAVE THE SAME COMPRESSIVE STRENGTH.
 - PAVEMENT REINFORCEMENT SHALL BE #3 BARS, SPACED AT 18 INCHES CENTER TO CENTER EACH WAY EXCEPT WHERE OTHERWISE NOTED IN THE PLANS OR GEOTECH REPORT.
 - BAR LAPS SHALL BE 30 DIAMETERS IN LENGTH.
 - ALL STRIPES SHALL BE 4 INCHES WIDE, UNLESS OTHERWISE NOTED.
 - INSTALLATION AND PLACEMENT OF IRRIGATION SLEEVES AND UTILITY CONDUITS SHALL BE IN ACCORDANCE WITH LANDSCAPE ARCHITECT AND MEP PLANS. CONTRACTOR TO VERIFY ALL SLEEVES HAVE BEEN PLACED PRIOR TO PAVING BEING PLACED.
 - SIDEWALKS AND ACCESSIBLE ROUTES SHALL HAVE A RUNNING SLOPE NO GREATER THAN 5% (UNLESS OTHERWISE NOTED) AND A CROSS SLOPE NO GREATER THAN 2%.



RECORD DRAWING

THE SIGNED AND SEALED CONSTRUCTION DOCUMENT HAS BEEN REVISED TO REFLECT CONSTRUCTION RECORDS MAINTAINED AND PROVIDED BY THE CONTRACTOR FOR THIS PROJECT. THE INFORMATION SHOWN ON THIS RECORD DRAWING, WHICH WAS PROVIDED BY THE CONTRACTOR, OR OTHERS NOT ASSOCIATED WITH THE DESIGN ENGINEER, CANNOT BE VERIFIED FOR ACCURACY OR COMPLETENESS. PACHECO KOCH SHALL ASSUME NO LIABILITY FOR ANY CHANGES MADE DURING CONSTRUCTION THAT WERE NOT SPECIFICALLY APPROVED BY THE ENGINEER PRIOR TO CONSTRUCTION. THE SEALED CONSTRUCTION DRAWINGS ARE ON FILE AT THE OFFICES OF PACHECO KOCH.

ATTESTED BY: *[Signature]*
SIGNATURE: CHET LEVIGERS, P.E.
ENGINEER OF RECORD: R.A. RAMOS GENERAL CONTRACTORS, INC.
DATE REVISED: 09/18/2017

NO.	DATE	REVISION
09/18/2017	RECORD DRAWINGS	

Pacheco Koch
7557 RAMBLER ROAD, SUITE 1400
DALLAS, TX 75231 972.235.3031
TX REG. ENGINEERING FIRM F-14439
TX REG. SURVEYING FIRM LS-10193805

PAVING PLAN & DETAILS
ROCKWALL REGIONAL DETENTION POND
LOT 1, BLOCK B
ROCKWALL TECHNOLOGY PARK PHASE IV
CITY OF ROCKWALL, ROCKWALL COUNTY, TEXAS

DESIGN	DRAWN	DATE	SCALE	NOTES	FILE	NO.
CTL	RHB	AUG 2016	1"=50'			C6.1

NELSON 9/18/2017 9:33 AM
 M:\VWC-37\3782-16\1668\DWG\CIVIL C3D 2015\3782-16\1668P.DWG

ROCKWALL REGIONAL DETENTION POND, ROCKWALL, TEXAS