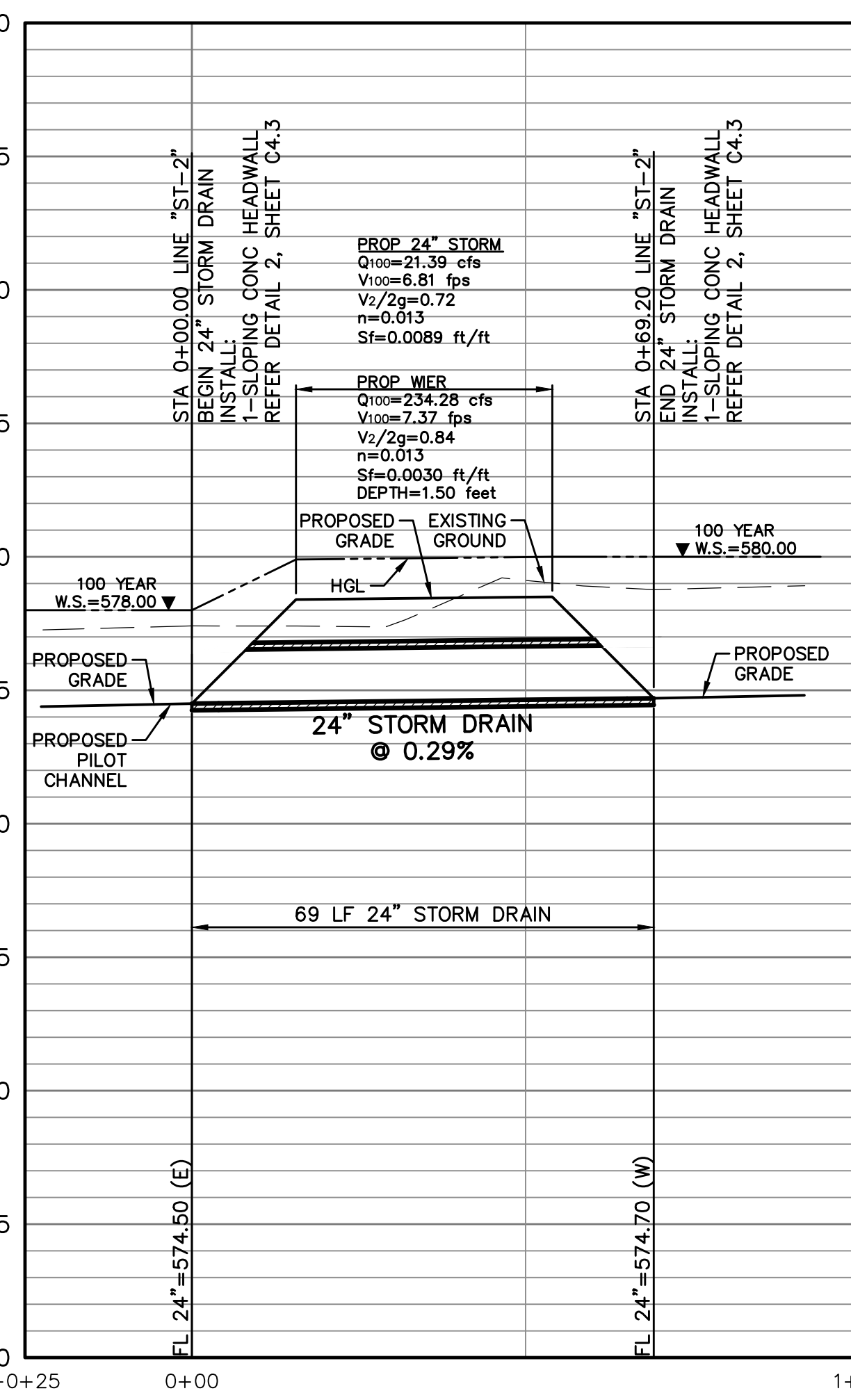
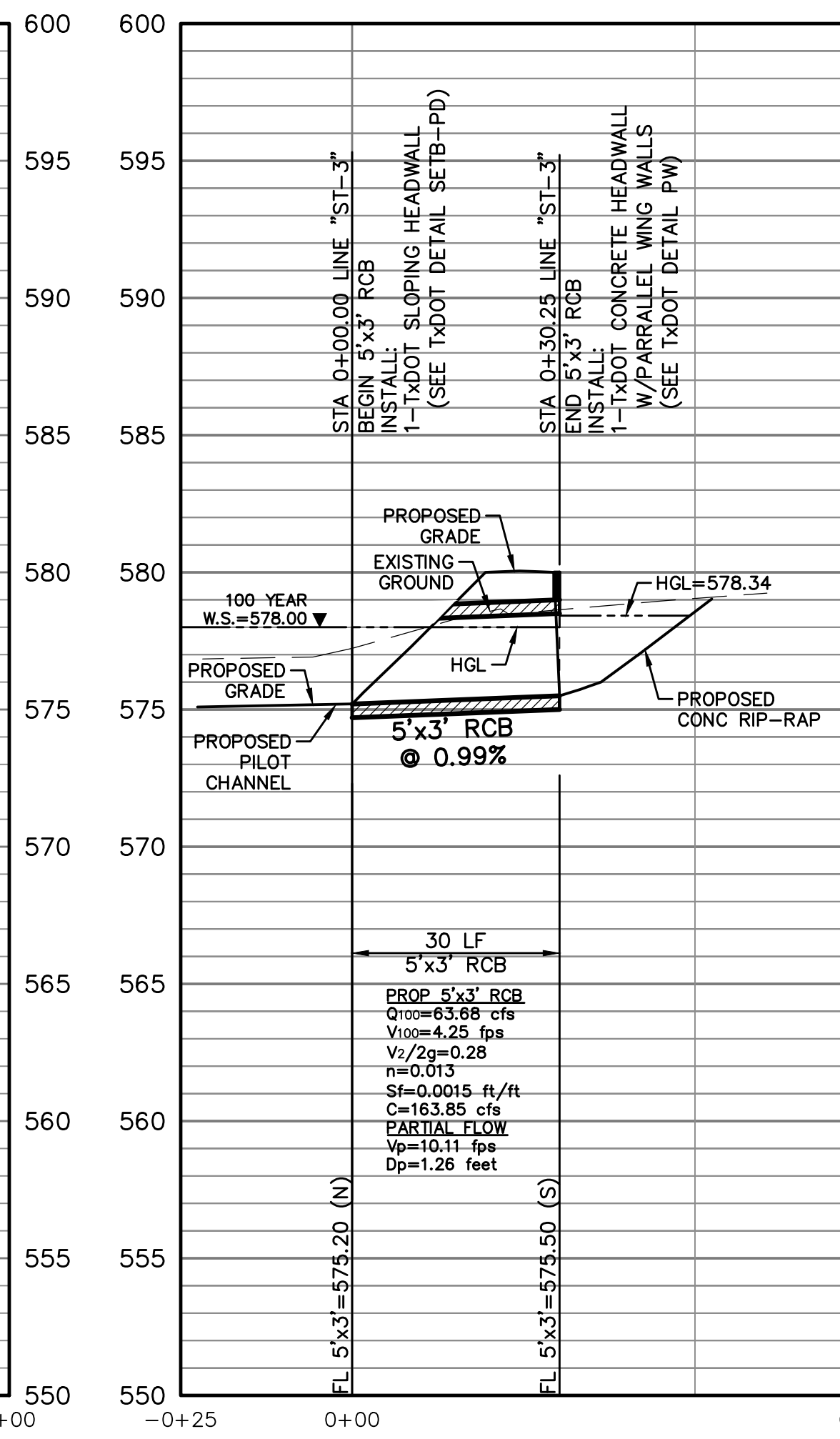


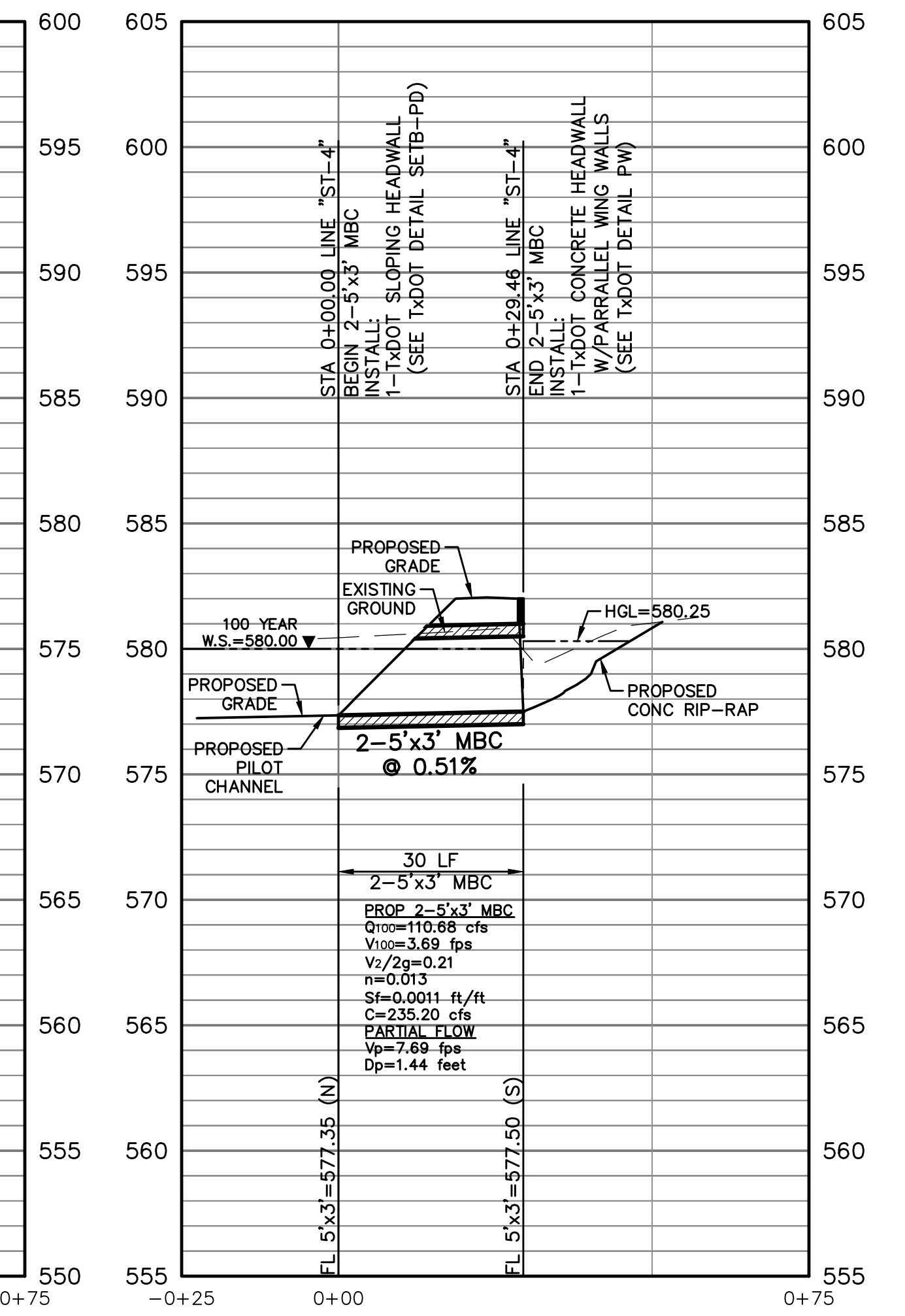
PROFILE ST-1



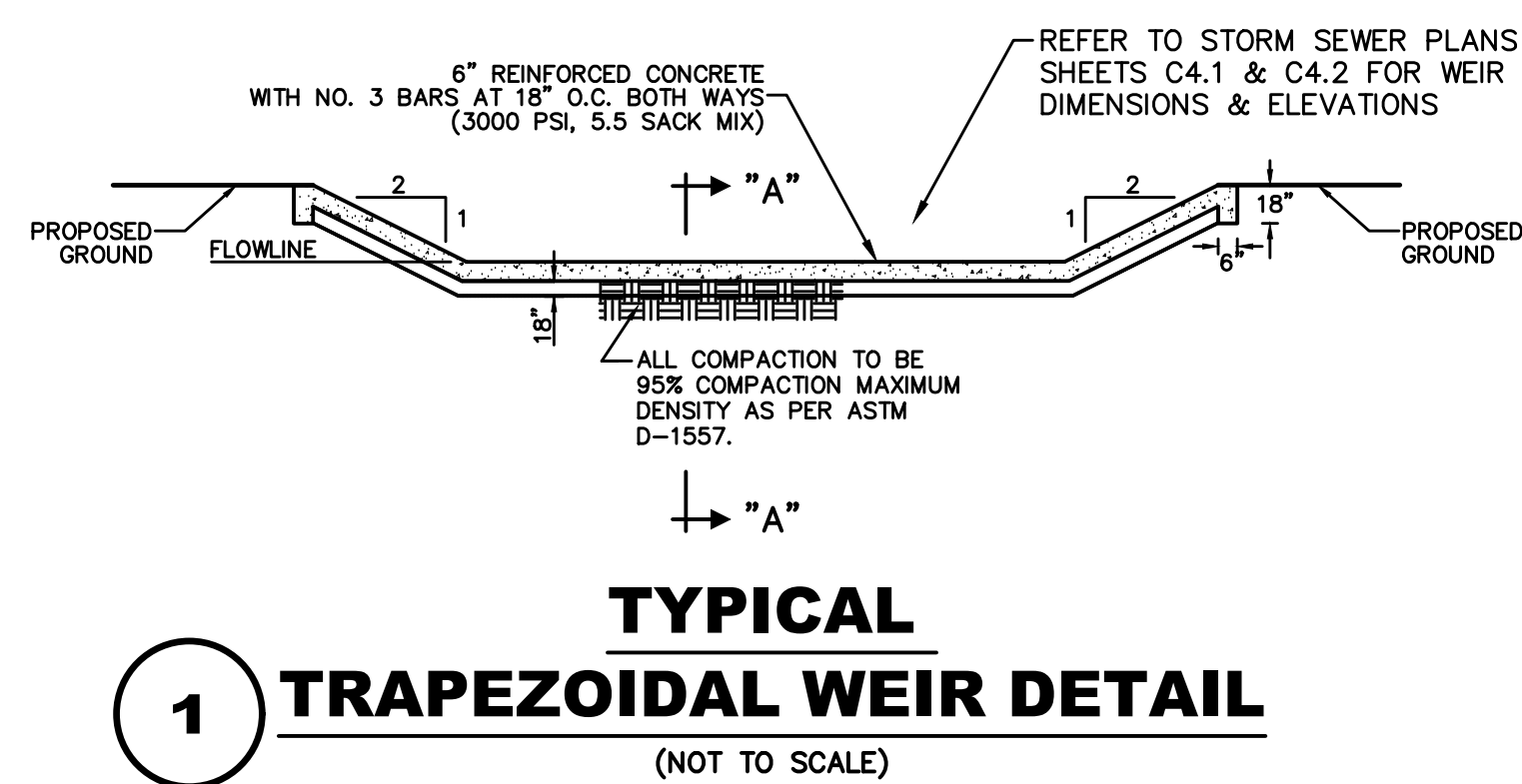
PROFILE ST-2



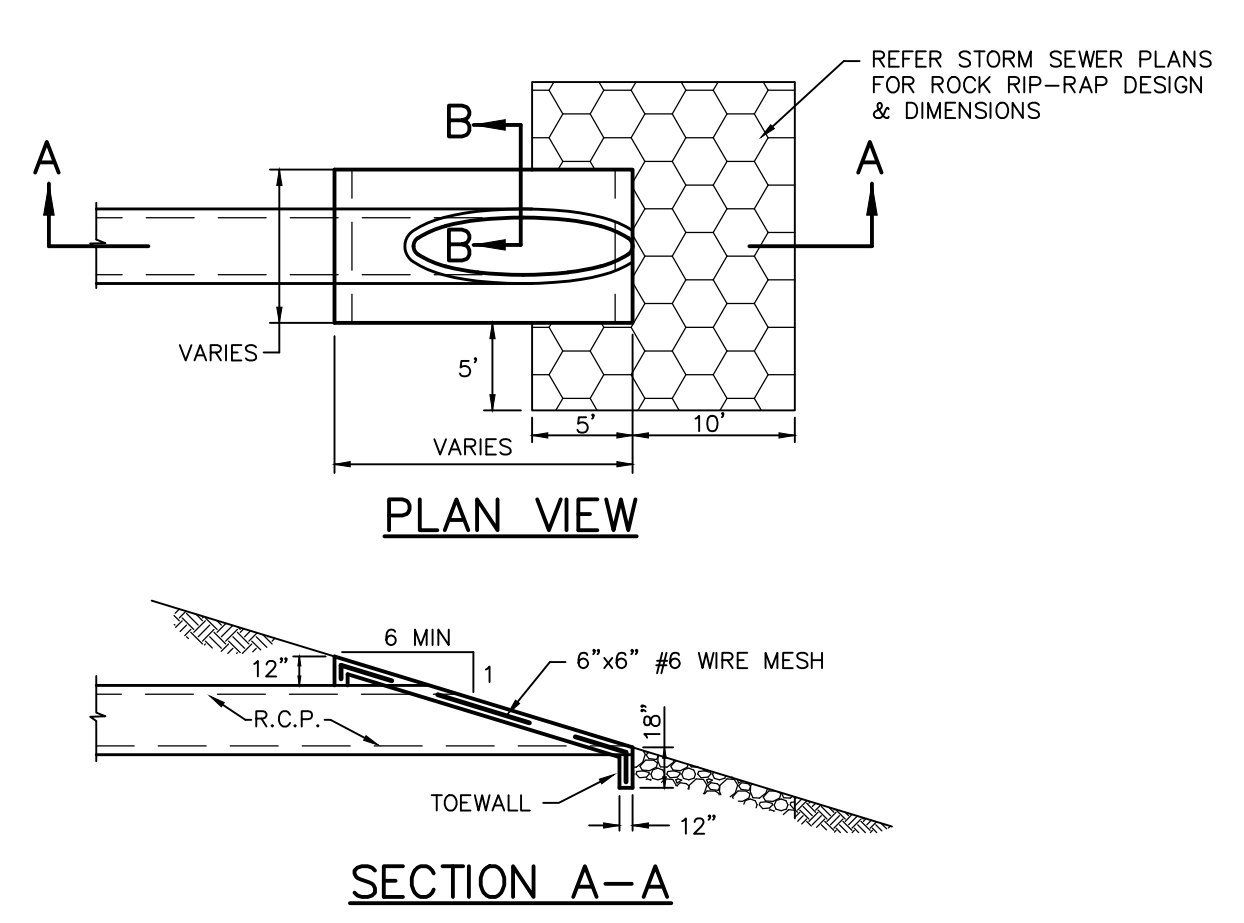
PROFILE ST-3



PROFILE ST-4



1 TYPICAL TRAPEZOIDAL WEIR DETAIL (NOT TO SCALE)

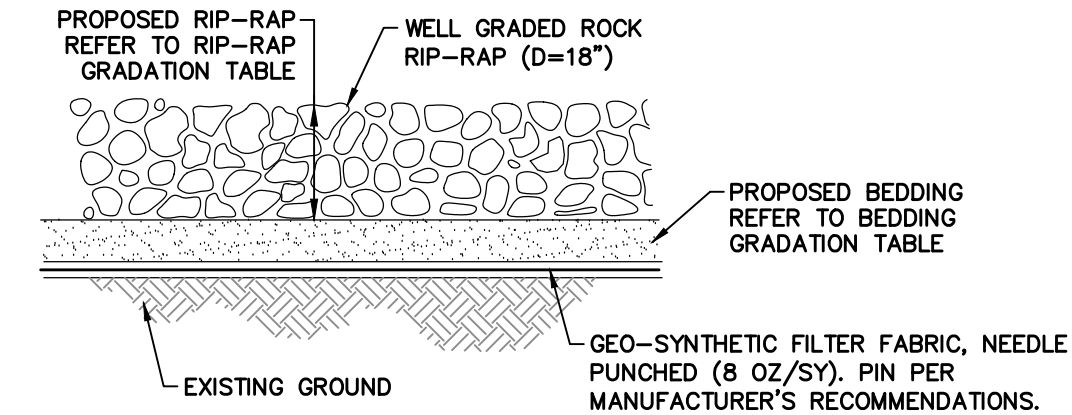


2 REINFORCED CONCRETE SLOPING HEADWALL (NOT TO SCALE)

RIP-RAP GRADATIONS	
18" THICKNESS OF RIP-RAP	
SIEVE SIZE SQUARE MESH	PERCENT PASSING
21 INCH	100
18 INCH	65 - 100
12 INCH	35 - 65
8 INCH	15 - 40
6 INCH	5 - 25
4 INCH	0 - 15

BEDDING GRADATIONS	
6" THICKNESS OF BEDDING	
SIEVE SIZE SQUARE MESH	PERCENT PASSING
3 INCH	100
1-1/2 INCH	55 - 100
3/4 INCH	25 - 60
3/8 INCH	5 - 30
No. 4	0 - 10

- DRY STONE RIP-RAP SPECIFICATIONS AND GRADING**
THE FOLLOWING SPECIFICATIONS AND GRADATIONS ARE MINIMUMS TO BE USED IN CONSTRUCTION.
- USE FILED OR QUARRY DRY STONE RIP-RAP.
 - ALL STONES SHALL HAVE A MINIMUM UNIT WEIGHT OF 155 lb/cf. QUARRY DATA SHEETS FOR RIP-RAP TO BE APPROVED PRIOR TO INSTALLATION.
 - MINIMUM BED DEPTH OF RIP-RAP SHALL BE 6".
 - STONES SHALL BE PLACED IN A SINGLE LAYER WITH CLOSED JOINTS. THE UPRIGHT AXIS OF THE STONES SHALL BE NEARLY PERPENDICULAR TO THE EMBANKMENT SLOPE. THE COURSES SHALL BE PLACED FROM THE BOTTOM OF THE EMBANKMENT UPWARDLY, WITH LARGER STONES BEING PLACED IN THE LOWER COURSES. OPEN JOINTS SHALL BE FILLED WITH SPALLS. STONES THAT PROJECT MORE THAN THE ALLOWABLE AMOUNT IN THE FINISHED WORK SHALL BE REPLACED, EMBEDDED DEEPER, OR CHIPPED.
 - RIP-RAP SHALL BE STOCKPILED AND APPROVED PRIOR TO INSTALLATION.



3 RIP-RAP DETAIL (NOT TO SCALE)

RECORD DRAWING

THE SIGNED AND SEALED CONSTRUCTION DOCUMENT HAS BEEN REVISED TO REFLECT CONSTRUCTION RECORDS MAINTAINED AND PROVIDED BY THE CONTRACTOR FOR THIS PROJECT. THE INFORMATION SHOWN ON THIS RECORD DRAWING, WHICH WAS PROVIDED BY THE CONTRACTOR, OR OTHERS NOT ASSOCIATED WITH THE DESIGN ENGINEER, CANNOT BE VERIFIED FOR ACCURACY OR COMPLETENESS. PACHECO KOCH SHALL ASSUME NO LIABILITY FOR ANY CHANGES MADE DURING CONSTRUCTION THAT WERE NOT SPECIFICALLY APPROVED BY THE ENGINEER PRIOR TO CONSTRUCTION. THE SEALED CONSTRUCTION DRAWINGS ARE ON FILE AT THE OFFICES OF PACHECO KOCH.

ATTESTED BY:
SIGNATURE: *[Signature]*
ENGINEER OF RECORD: CHET LEUSERS, P.E.
CONTRACTOR: R.A. RAMOS GENERAL CONTRACTORS, INC.
DATE REVISED: 09/18/2017

NO.	DATE	REVISION
1	09/18/2017	RECORD DRAWINGS
2	09/19/2016	REVISED DETAIL

Pacheco Koch
7557 RAMBLER ROAD, SUITE 1400
DALLAS, TX 75231 972.235.3031
TX REG. ENGINEERING FIRM F-14439
TX REG. SURVEYING FIRM LS-10193805

STORM SEWER PROFILE
ROCKWALL REGIONAL DETENTION POND
LOT 1, BLOCK B
ROCKWALL TECHNOLOGY PARK PHASE IV
CITY OF ROCKWALL, ROCKWALL COUNTY, TEXAS

DESIGN	DRAWN	DATE	SCALE	NOTES	FILE	NO.
CTL	RHB	AUG 2016	1"=20':H 1"=05':V			C4.3

JNELSON 9/18/2017 9:32 AM M:_DWG-37\3782-16\668\DWG\CIVIL C3D 2015\3782-16\668\STRM.DWG

ROCKWALL REGIONAL DETENTION POND, ROCKWALL, TEXAS