

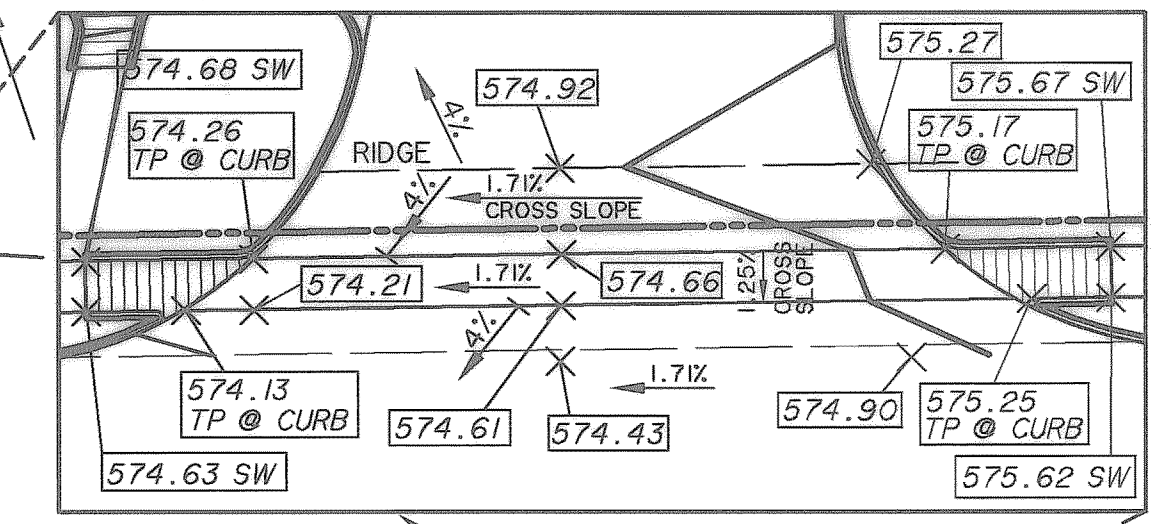
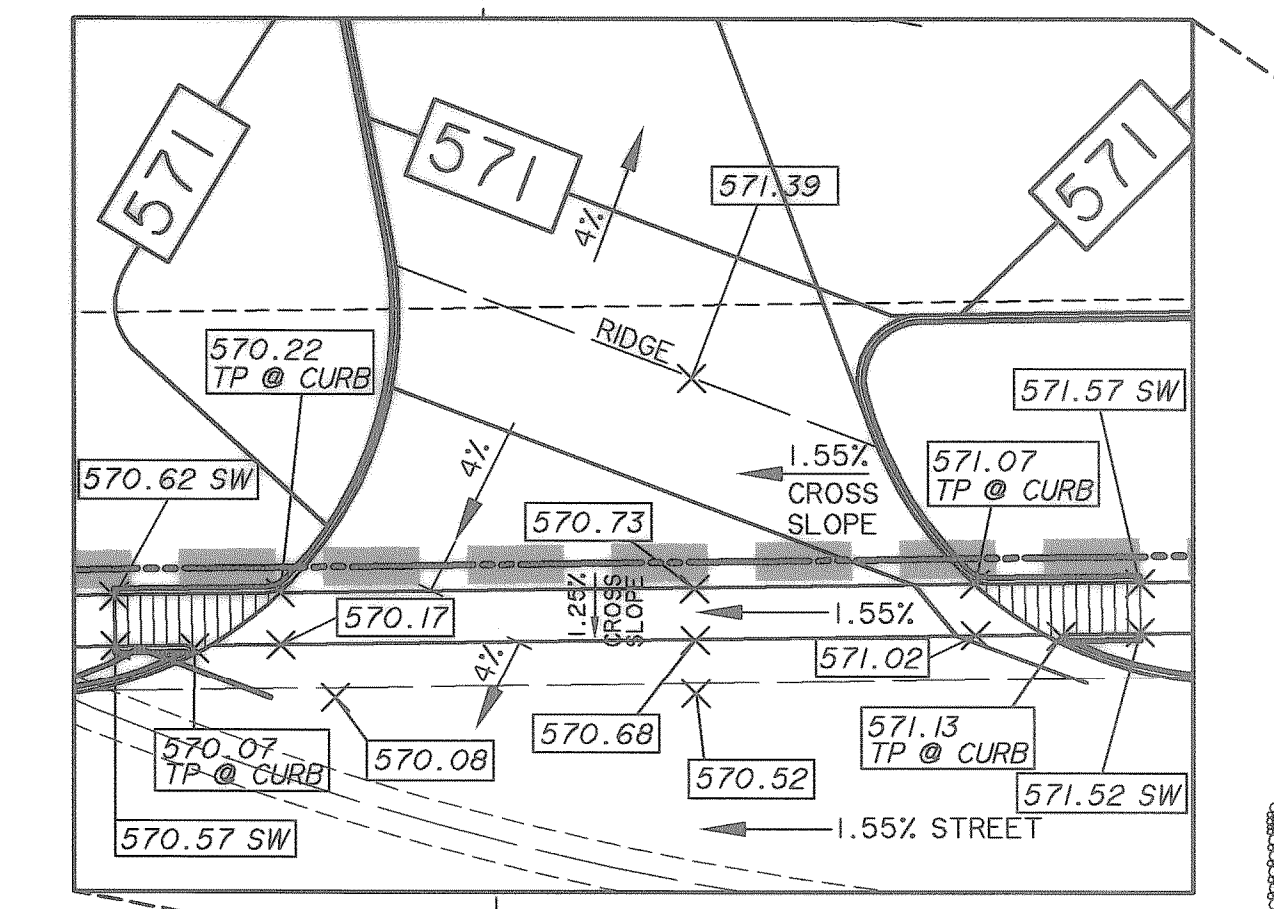
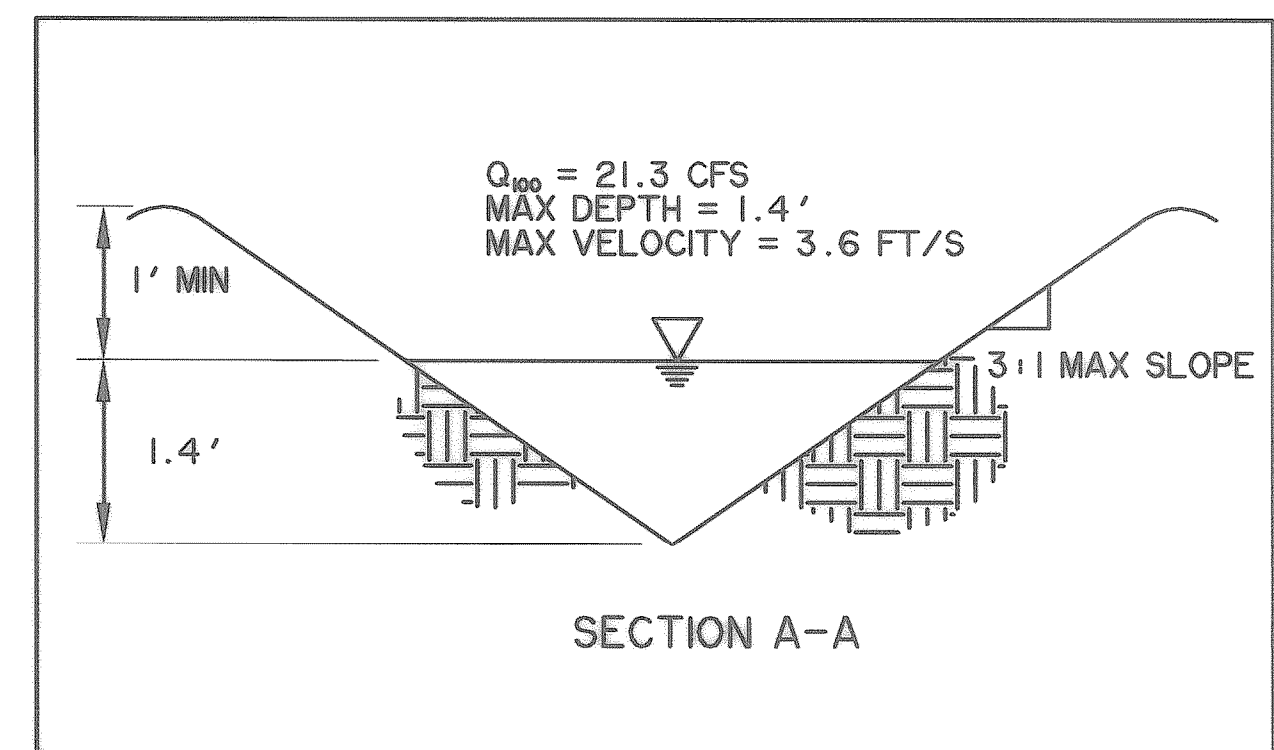
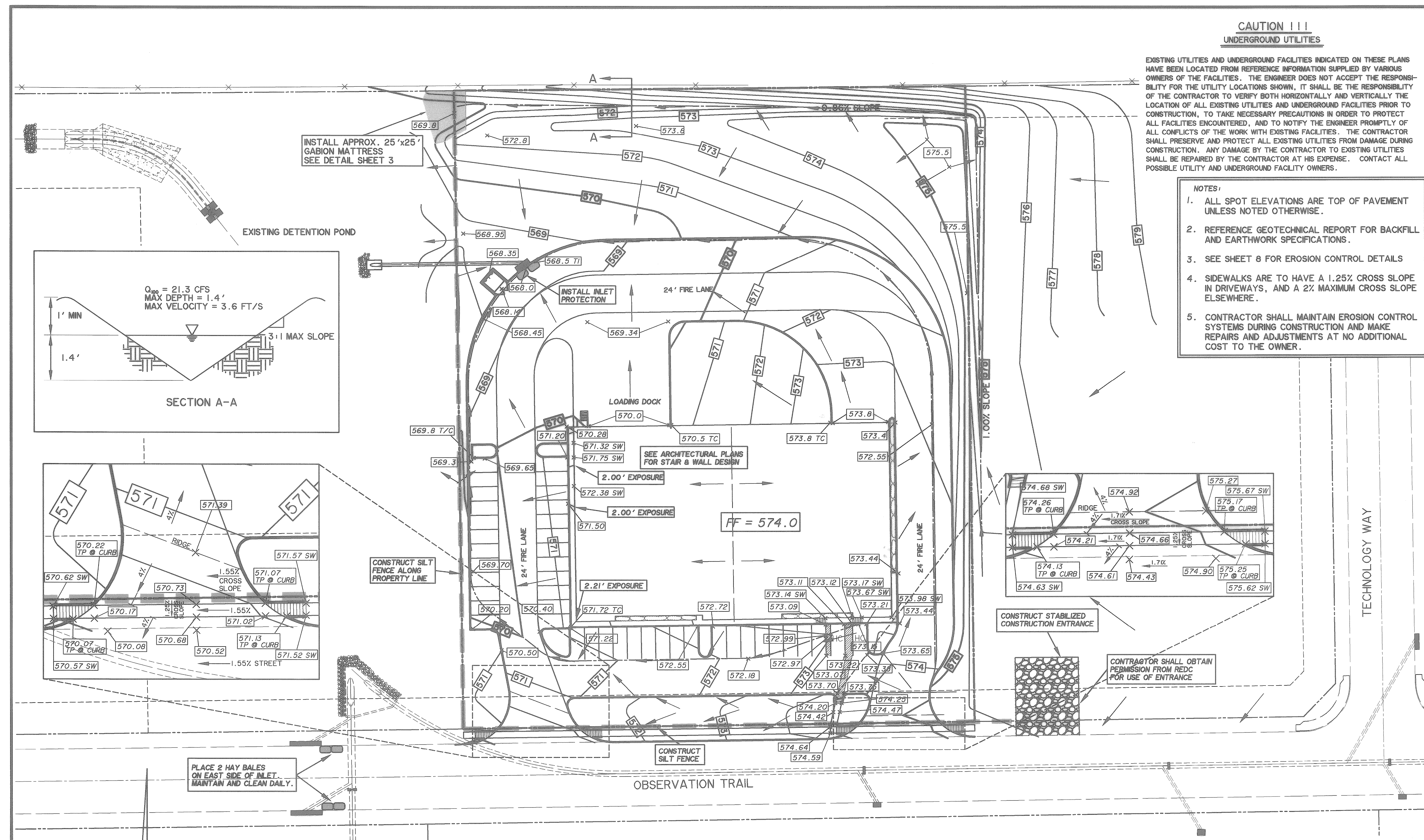
**CAUTION !!!
UNDERGROUND UTILITIES**

EXISTING UTILITIES AND UNDERGROUND FACILITIES INDICATED ON THESE PLANS HAVE BEEN LOCATED FROM REFERENCE INFORMATION SUPPLIED BY VARIOUS OWNERS OF THE FACILITIES. THE ENGINEER DOES NOT ACCEPT THE RESPONSIBILITY FOR THE UTILITY LOCATIONS SHOWN, IT SHALL BE THE RESPONSIBILITY OF THE CONTRACTOR TO VERIFY BOTH HORIZONTALLY AND VERTICALLY THE LOCATION OF ALL EXISTING UTILITIES AND UNDERGROUND FACILITIES PRIOR TO CONSTRUCTION, TO TAKE NECESSARY PRECAUTIONS IN ORDER TO PROTECT ALL FACILITIES ENCOUNTERED, AND TO NOTIFY THE ENGINEER PROMPTLY OF ALL CONFLICTS OF THE WORK WITH EXISTING FACILITIES. THE CONTRACTOR SHALL PRESERVE AND PROTECT ALL EXISTING UTILITIES FROM DAMAGE DURING CONSTRUCTION. ANY DAMAGE BY THE CONTRACTOR TO EXISTING UTILITIES SHALL BE REPAIRED BY THE CONTRACTOR AT HIS EXPENSE. CONTACT ALL POSSIBLE UTILITY AND UNDERGROUND FACILITY OWNERS.

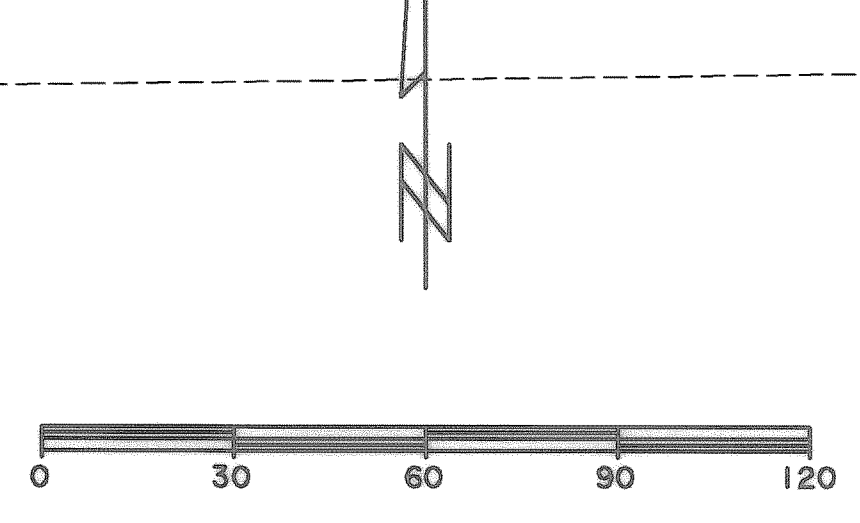
- NOTES:**
1. ALL SPOT ELEVATIONS ARE TOP OF PAVEMENT UNLESS NOTED OTHERWISE.
 2. REFERENCE GEOTECHNICAL REPORT FOR BACKFILL AND EARTHWORK SPECIFICATIONS.
 3. SEE SHEET 8 FOR EROSION CONTROL DETAILS
 4. SIDEWALKS ARE TO HAVE A 1.25% CROSS SLOPE IN DRIVEWAYS, AND A 2% MAXIMUM CROSS SLOPE ELSEWHERE.
 5. CONTRACTOR SHALL MAINTAIN EROSION CONTROL SYSTEMS DURING CONSTRUCTION AND MAKE REPAIRS AND ADJUSTMENTS AT NO ADDITIONAL COST TO THE OWNER.

PREPARED BY:
VIA WIER & ASSOCIATES, INC.
ENGINEERS SURVEYORS LAND PLANNERS
4330 BELLEVUE PLACE SUITE 130 ARLINGTON, TEXAS 76018 METRO (817)467-7700
6721 5th STREET FISCO, TEXAS METRO (214)367-8000
www.viawier.com

**PRECISION SHEET METAL
GRADING AND
EROSION CONTROL PLAN**



PLACE 2 HAY BALES ON EAST SIDE OF INLET. MAINTAIN AND CLEAN DAILY.



**RECORD
DRAWING**
DECEMBER 6, 2002

BENCHMARKS:
"X" CUT ON THE INTERSECTION OF THE CENTERLINES OF INNOVATION DRIVE AND OBSERVATION TRAIL
ELEVATION 574.06
CITY MONUMENT LOCATED ON THE TOP OF THE INLET ON THE SOUTH SIDE OF OBSERVATION TRAIL, APPROXIMATELY 250' EAST OF INNOVATION DRIVE
ELEVATION 569.08

LEGEND

DIRECTION OF FLOW	TI = TOP OF INLET	TC = TOP OF CURB
HAY BALE INLET PROTECTION	EXISTING MINOR CONTOUR 598
SILT FENCE	EXISTING MAJOR CONTOUR 595
PROPOSED STORM DRAIN	PROPOSED MINOR CONTOUR 596
STABILIZED CONSTRUCTION ENTRANCE	PROPOSED MAJOR CONTOUR 595
	PROPOSED SPOT ELEVATION	598.45 x

STATE OF TEXAS
REGISTERED PROFESSIONAL ENGINEER
RONALD RAMIREZ
81821
12/19/02
COPYRIGHT ©
WIER & ASSOCIATES, INC.
LAST SHEET EDIT
DATE 12-07-2002
WA# 02032
SHEET NO. 6

FILE: Grading.dwg
TIME: 6:48