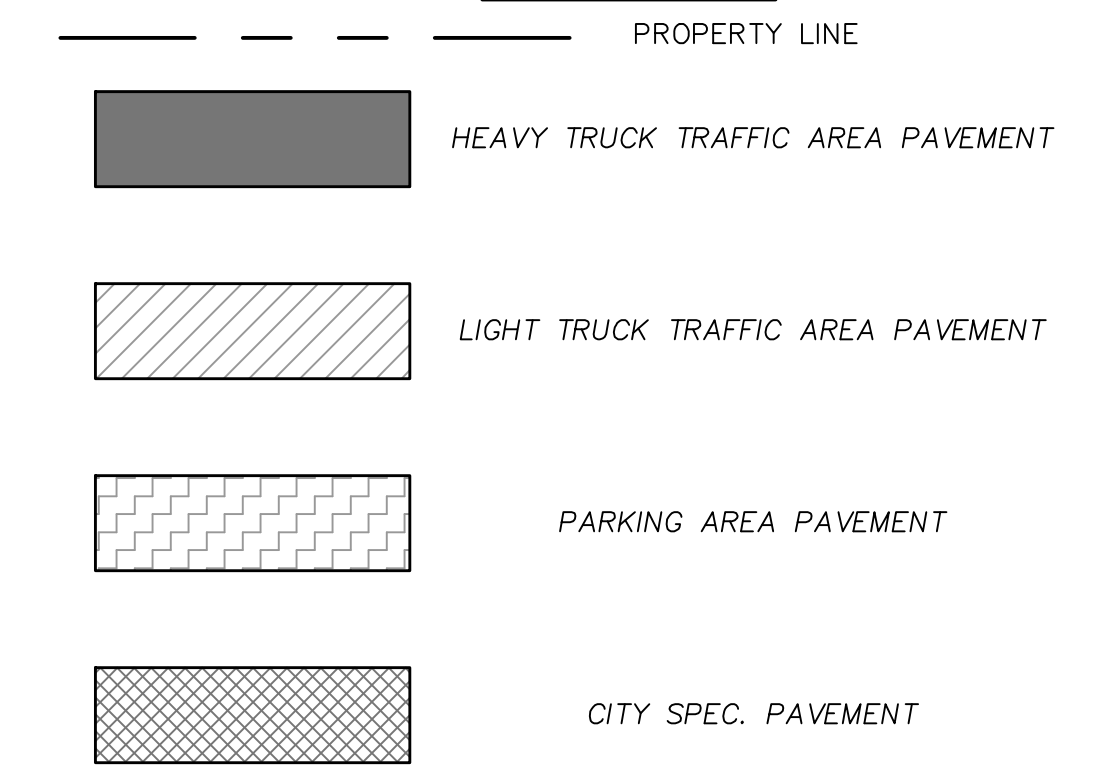


**Benchmark Note**  
 Benchmark: An "X" found in the centerline intersection of Observation Trail and Technology Trail. Elevation=580.50

**CAUTION EXISTING UTILITIES !!!**  
 CALL TEXAS 811!! EXISTING UTILITIES AND UNDERGROUND FACILITIES INDICATED ON THESE PLANS HAVE BEEN LOCATED FROM REFERENCE INFORMATION. IT SHALL BE THE RESPONSIBILITY OF THE CONTRACTOR TO VERIFY BOTH HORIZONTALLY AND VERTICALLY THE LOCATION OF ALL EXISTING UTILITIES AND UNDERGROUND FACILITIES PRIOR TO CONSTRUCTION, TO TAKE THE NECESSARY PRECAUTIONS IN ORDER TO PROTECT ALL FACILITIES ENCOUNTERED. THE CONTRACTOR SHALL PRESERVE AND PROTECT ALL EXISTING UTILITIES FROM DAMAGE DURING CONSTRUCTION.

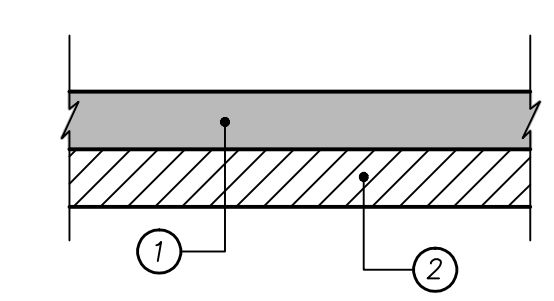
**LEGEND**



\* BARRIER FREE RAMP PER CITY SPECS

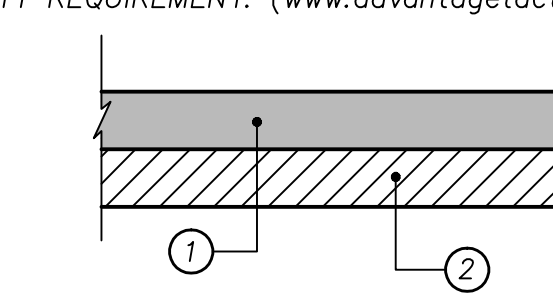
**REINFORCED CONCRETE SIDEWALK SECTION**  
 NTS

- 4"-3,000 PSI CLASS "C" CONCRETE PAVEMENT WITH NO. 3 BARS 24" ON CENTER BOTH WAYS. EXPANSION JOINTS TO BE PROVIDED EVERY 115' AND AT ALL RADIUS POINTS. 1" DEEP MARKINGS FOLLOWED BY GROOVING TOO TO BE CUT INTO SIDEWALK EVERY 5'. (5.5 SACK MIX MIN.)
- 6" COMPACTED SUBGRADE. SCARIFY 6" DEEP AND COMPACT TO A STANDARD PROCTOR MAXIMUM DRY DENSITY NOT LESS THAN 95%. NO SAND ALLOWED.



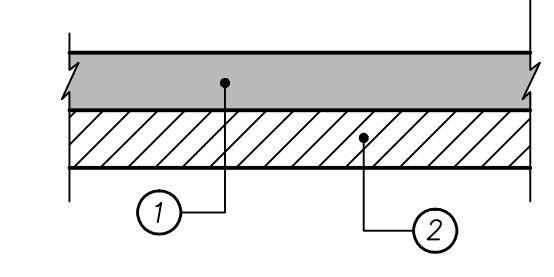
**HEAVY TRUCK TRAFFIC AREA PAVEMENT SECTION**  
 NTS

- 9"-3,600 PSI CLASS "C" CONCRETE PAVEMENT WITH NO. 3 BARS 18" ON CENTER BOTH WAYS. (6 SACK MIN. FOR MACHINE PLACE, 6.5 SACK MIN. FOR HAND PLACE)
- 6" COMPACTED SUBGRADE. SCARIFY 6" DEEP AND COMPACT TO A STANDARD PROCTOR MAXIMUM DRY DENSITY NOT LESS THAN 95% AND WITHIN 1% BELOW AND 3% ABOVE OPTIMUM MOISTURE CONTENT. NO SAND ALLOWED.



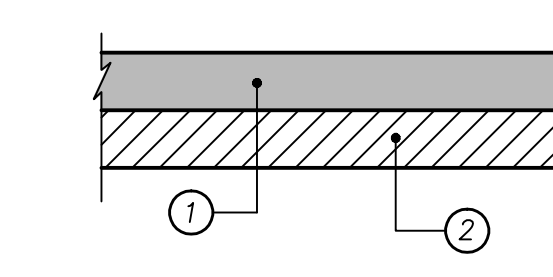
**PARKING AREA PAVEMENT SECTION**  
 NTS

- 7"-3,000 PSI CLASS "C" CONCRETE PAVEMENT WITH NO. 3 BARS 18" ON CENTER BOTH WAYS. (6 SACK MIN. FOR MACHINE PLACE, 6.5 SACK MIN. FOR HAND PLACE)
- 6" COMPACTED SUBGRADE. SCARIFY 6" DEEP AND COMPACT TO A STANDARD PROCTOR MAXIMUM DRY DENSITY NOT LESS THAN 95% AND WITHIN 1% BELOW AND 3% ABOVE OPTIMUM MOISTURE CONTENT. NO SAND ALLOWED.



**LIGHT TRUCK TRAFFIC AREA PAVEMENT SECTION**  
 NTS

- 8"-3,600 PSI CLASS "C" CONCRETE PAVEMENT WITH NO. 3 BARS 18" ON CENTER BOTH WAYS. (6 SACK MIN. FOR MACHINE PLACE, 6.5 SACK MIN. FOR HAND PLACE)
- 6" COMPACTED SUBGRADE. SCARIFY 6" DEEP AND COMPACT TO A STANDARD PROCTOR MAXIMUM DRY DENSITY NOT LESS THAN 95% AND WITHIN 1% BELOW AND 3% ABOVE OPTIMUM MOISTURE CONTENT. NO SAND ALLOWED.



**CITY SPEC. PAVEMENT SECTION**  
 NTS

- 10"-4,000 PSI CLASS "C" CONCRETE PAVEMENT WITH NO. 3 BARS 24" ON CENTER BOTH WAYS. (6.5 SACK MIX MIN.)
- 8" COMPACTED SUBGRADE. SCARIFY 8" DEEP AND COMPACT TO A STANDARD PROCTOR MAXIMUM DRY DENSITY NOT LESS THAN 95% AND WITHIN 1% BELOW AND 3% ABOVE OPTIMUM MOISTURE CONTENT. NO SAND ALLOWED.

Revision	Date	Description
1	07/11/12	REVISIONS PER CITY COMMENTS
2	07/19/12	REVISIONS PER CITY COMMENTS
3	10/30/12	PAVEMENT THICKNESS REVISION
	04/03/12	RECORD DRAWING

Owner:  
**KRT ENTERPRISES, INC.**  
 P.O. Box 1103 • Rockwall, TX 75087

**Nolan Power Building**  
 Rockwall, Texas

~ Civil Engineer ~  
**F.C. CUNY CORPORATION**  
 #2 Horizon Court • Heath, Texas 75032 • (469) 402-7700  
 Texas Registered Engineering Firm F-7449

Drawn By: F.C. CUNY	Checked By: F.C. CUNY
Date: 05/12	Project No.:
Sheet Title: <b>Dimension Control and Paving Plan</b>	
Scale: 1"=20'	Sheet No.: