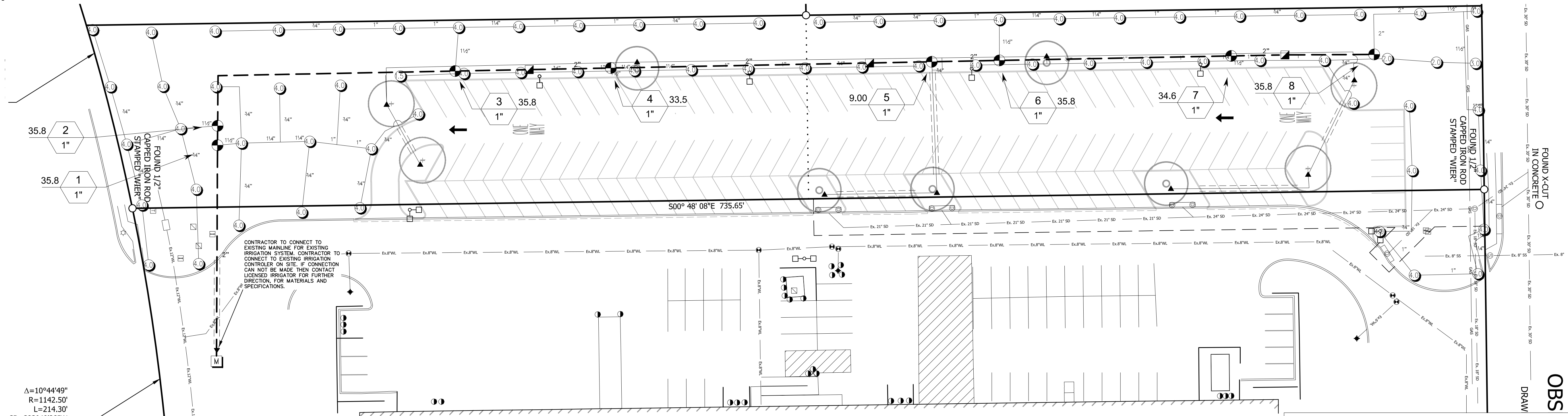
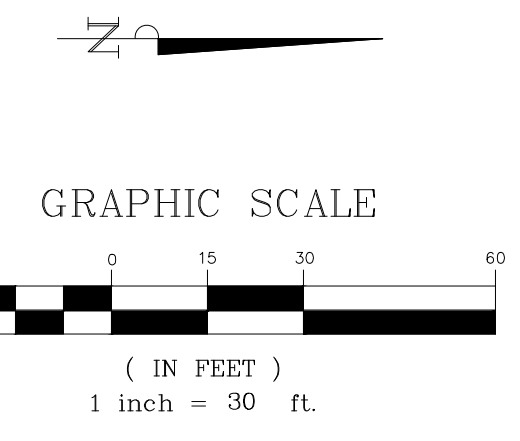


VICINITY MAP



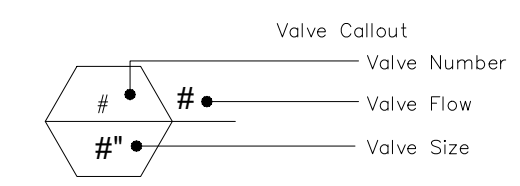
Δ=10°44'49"  
R=1142.50'  
L=214.30'

CONTRACTOR TO CONNECT TO EXISTING MAINLINE FOR EXISTING IRRIGATION SYSTEM. CONTRACTOR TO CONNECT TO EXISTING IRRIGATION CONTROLLER ON SITE. IF CONNECTION CAN NOT BE MADE THEN CONTACT LICENSED IRRIGATOR FOR FURTHER DIRECTION FOR MATERIALS AND SPECIFICATIONS.

IRRIGATION\_SCHEDULE

SYMBOL	MANUFACTURER/MODEL/DESCRIPTION
▲ 1402 ▲ 1401 ▲ 1404	Rain Bird 1804-1400 Flood Bubbler 4.0" pop-up
SYMBOL	MANUFACTURER/MODEL/DESCRIPTION
1.5	Rain Bird 3504-PC Turf Rotor, 4.0" Pop-Up, Adjustable and Full Circle.
2.0	Rain Bird 3504-PC Turf Rotor, 4.0" Pop-Up, Adjustable and Full Circle.
5.0	Rain Bird 3504-PC Turf Rotor, 4.0" Pop-Up, Adjustable and Full Circle.
4.0	Rain Bird 3504-PC Turf Rotor, 4.0" Pop-Up, Adjustable and Full Circle.
SYMBOL	MANUFACTURER/MODEL/DESCRIPTION
⊕	Rain Bird PEB 1", 1-1/2", 2" Plastic Industrial Valves. Low Flow Operating Capability, Globe Configuration.
▣	Rain Bird 33-DLRC 3/4" Brass Quick-Coupling Valve, with Corrosion-Resistant Stainless Steel Spring, Locking Thermoplastic Rubber Cover, Double Track Key Lug, and 2-Piece Body.
M	Water Meter 1"
—	Irrigation Lateral Line: PVC Class 200 SDR 21 PVC Class 200 irrigation pipe.
---	Irrigation Mainline: PVC Class 200 SDR 21 PVC Class 200 irrigation pipe.
----	Pipe Sleeve: PVC Schedule 40 Typical pipe sleeve for irrigation pipe. Pipe sleeve size shall allow for irrigation piping and their related couplings to easily slide through sleeving material. Extend sleeves 18 inches beyond edges of paving or construction.

**RECORD DRAWING**  
THIS RECORD DRAWING REFLECTS, TO THE BEST OF THE IRRIGATOR'S KNOWLEDGE, THE APPROXIMATE LOCATION OF THE CONSTRUCTED WORK BASED UPON INFORMATION PROVIDED BY THE CONTRACTOR AND WAS PREPARED WITHOUT THE BENEFIT OF AN AS-BUILT SURVEY. THIS RECORD DRAWING MAY DEVIATE FROM THE ORIGINAL CONSTRUCTION DOCUMENTS DUE TO FIELD CHANGES DURING CONSTRUCTION. THE IRRIGATOR'S SEAL OR SIGNATURE ON THIS DRAWING IS NOT INTENDED TO INDICATE THE IRRIGATOR'S APPROVAL OR ACCEPTANCE OF ANY SUCH DEVIATIONS FROM THE DESIGN.  
DATE: 07/23/15  
DREW J. DUBOCO, LICENSED IRRIGATOR 17102



**BANNISTER**  
ENGINEERING  
1896 COUNTRY CLUB DRIVE | Mansfield, TX 76063 | 817.842.2094 | 817.842.2095 fax  
TEXAS FIRM REGISTRATION NO. F-10589

ROCKWALL SCIENCE PLACE  
L-3 AEROSPACE SYSTEMS  
1701 SCIENCE PLACE, ROCKWALL, TX  
IRRIGATION PLAN

No.	Date	Revision Description

STATE OF TEXAS  
DREW J. DUBOCO  
17102  
LICENSED IRRIGATOR  
07-17-2015

SHEET NO.

IR-1.0

CASE NO. SP2015-001