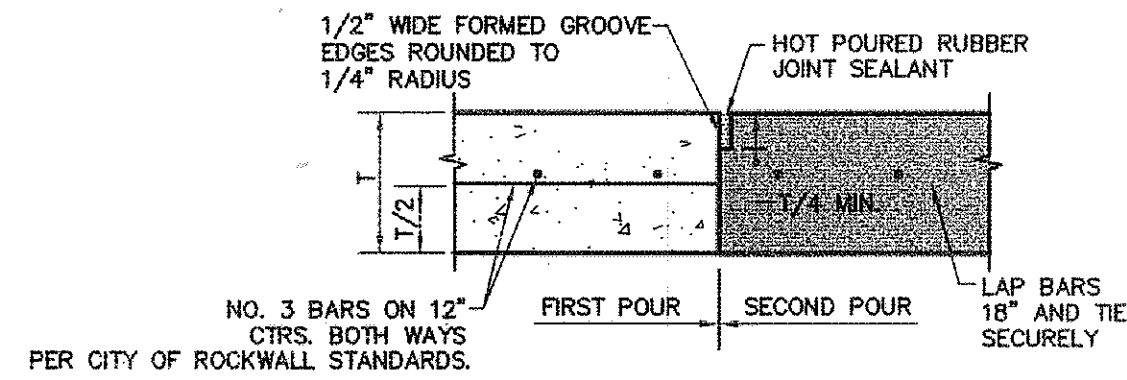


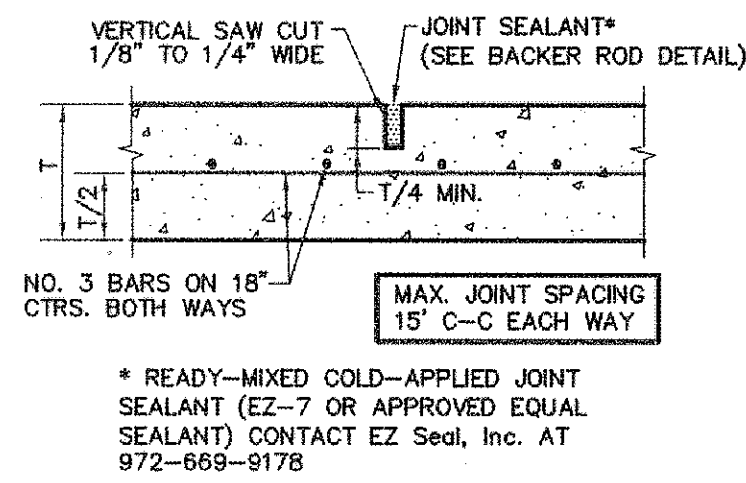
1 CONCRETE PAVEMENT SECTION

NOT TO SCALE



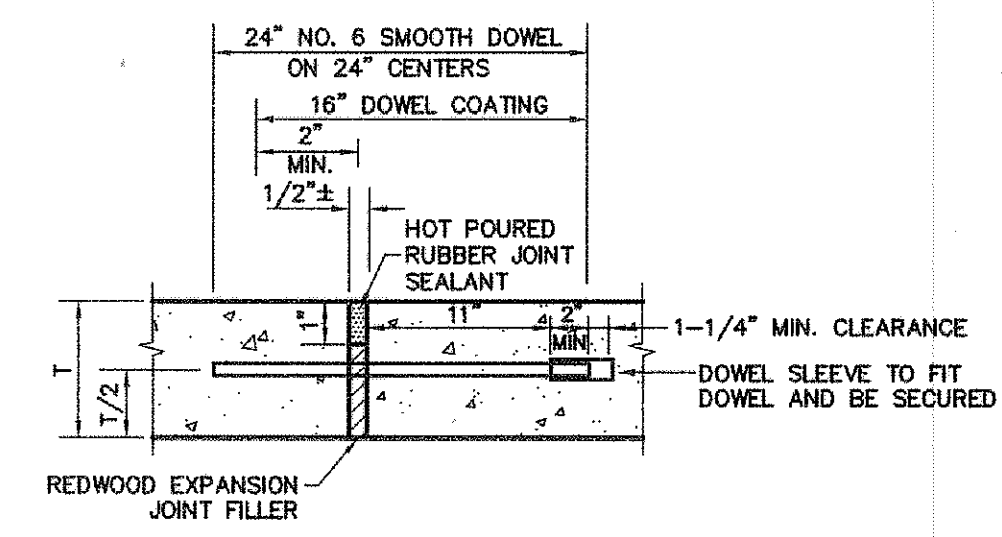
2 CONSTRUCTION JOINT

NOT TO SCALE



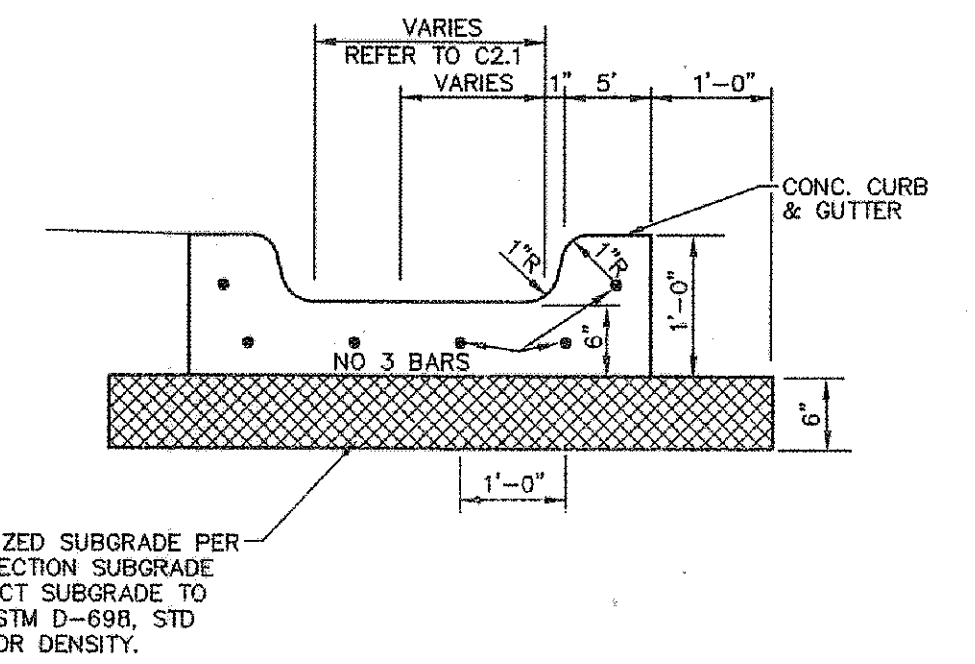
3 SAWED DUMMY JOINT

NOT TO SCALE



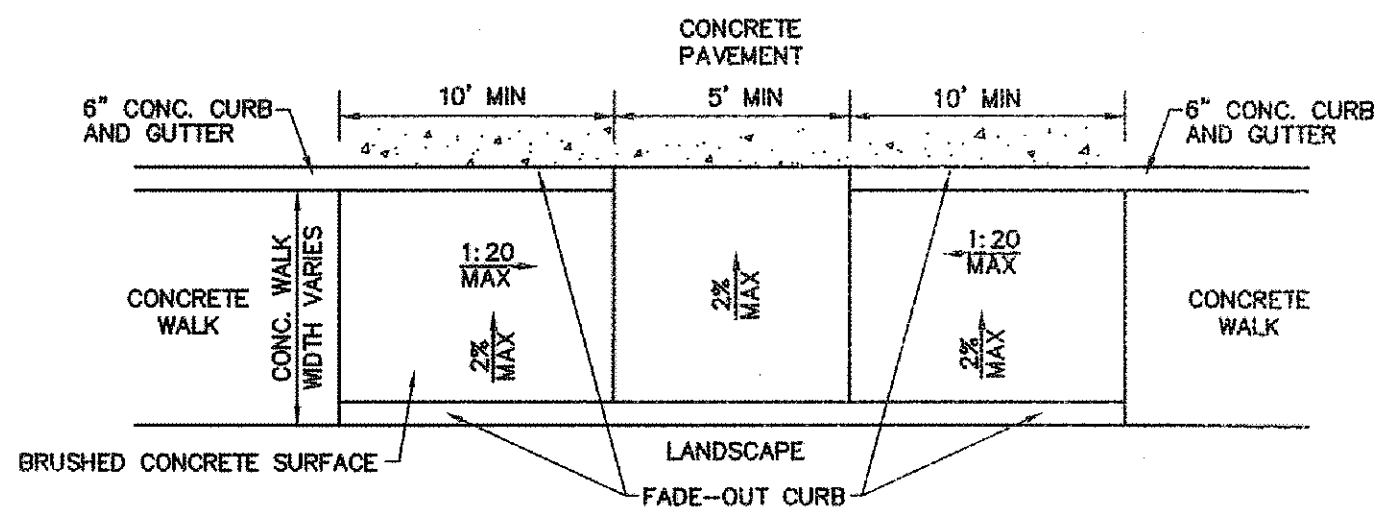
4 EXPANSION JOINT

NOT TO SCALE



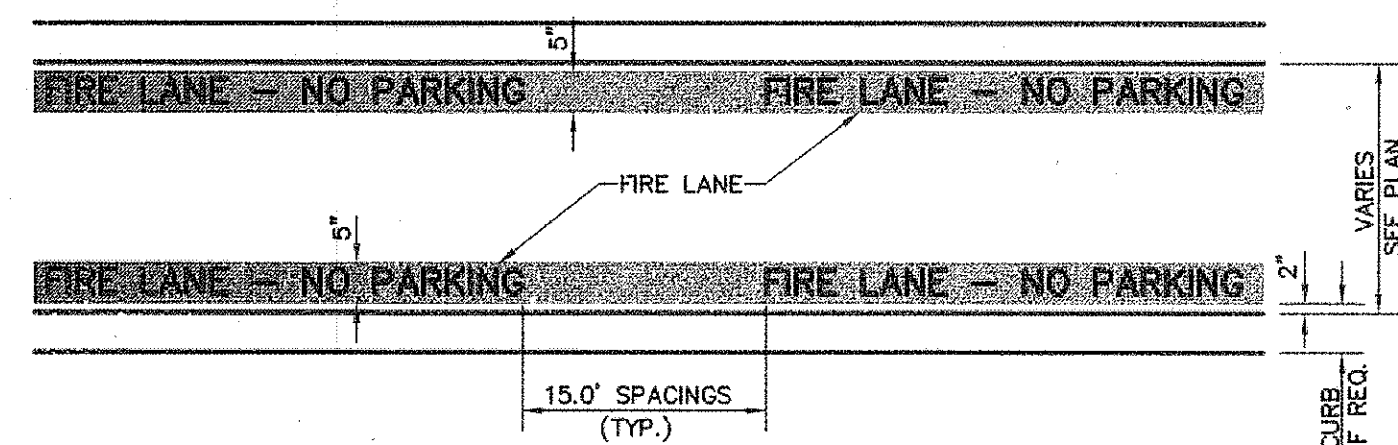
5 FLUME DETAIL

NOT TO SCALE



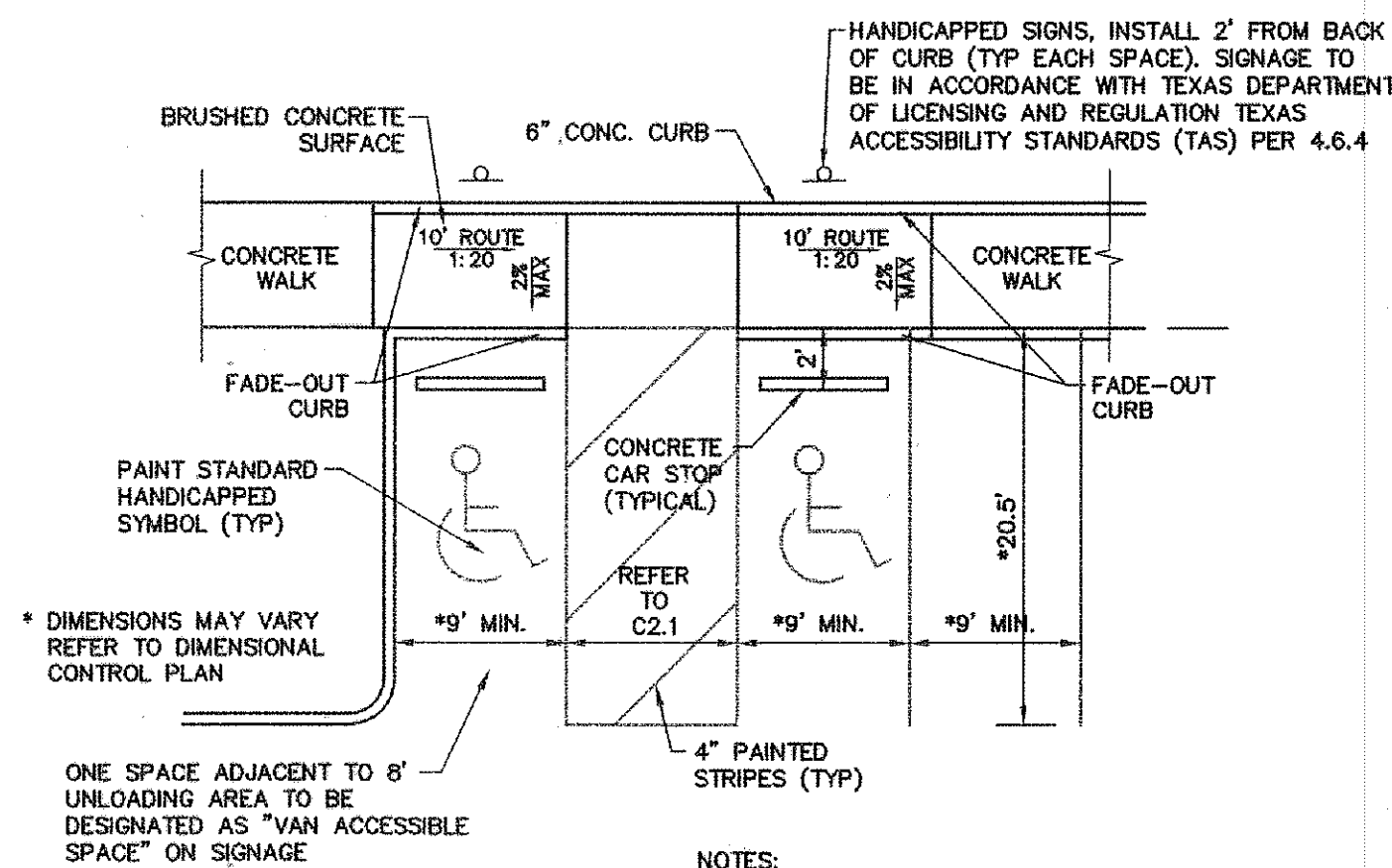
6 TWO-WAY ACCESS ROUTE WITHOUT RAMP

NOT TO SCALE



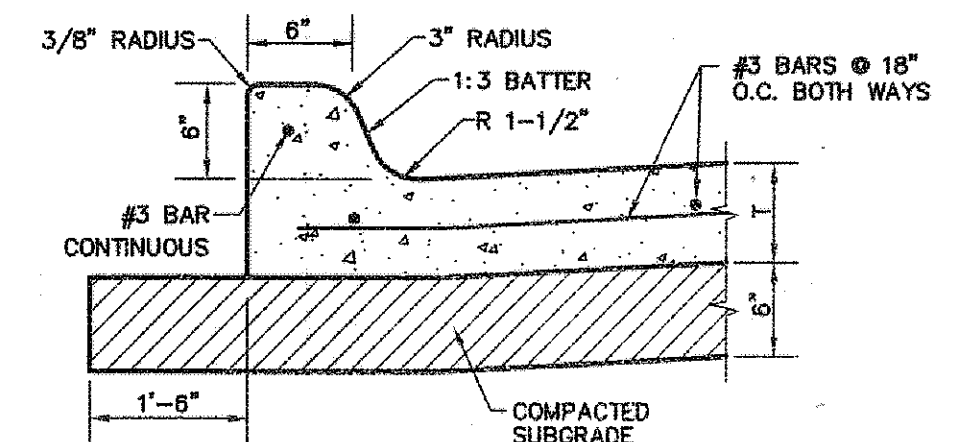
7 FIRE LANE STRIPING

NOT TO SCALE



8 90° HANDICAP PARKING & ACCESS ROUTE WITHOUT RAMP

NOT TO SCALE



9 INTEGRAL CURB

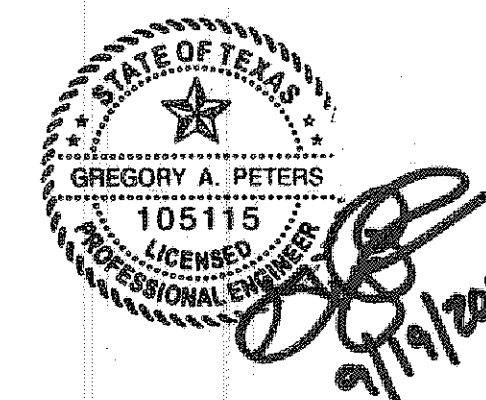
NOT TO SCALE

- NOTES:**
1. MAXIMUM SLOPE FOR ALL PATHS 5%, MAX CROSS FALL IS 2% FOR THE FIRST FIVE FEET FROM THE DOOR A 2% SLOPE (MAX) MUST BE MAINTAINED.
 2. SIGNAGE AND MARKINGS TO BE IN ACCORDANCE WITH FEDERAL, STATE AND LOCAL REGULATIONS.
 3. HANDICAP RAMPS WILL BE STAINED (NO PAINT).

GENERAL NOTE:
A. STRIPING TO BE DONE IN ACCORDANCE WITH CITY STANDARDS.

- STRIPING DETAIL NOTE:**
- A. PAINT:**
1. STRIPE SHALL BE FIVE (5) INCHES WIDE PAINTED WITH AN EXTERIOR ACRYLIC LATEX PAINT.
A. COLOR SHALL BE "TRAFFIC RED" GLIDDEN NO. 63251 OR EQUAL.
 2. LETTERS SHALL BE FOUR (4) INCHES HIGH PAINTED WITH AN EXTERIOR ACRYLIC LATEX PAINT.
B. COLOR SHALL BE "TRAFFIC WHITE" GLIDDEN NO. 563245 OR EQUAL.
- B. APPLICATION:**
1. STRIPE MAY BE BRUSHED OR SPRAYED, ONE COAT TO FINISH.
 2. LETTERS SHALL BE STENCIL FORMED, BRUSH APPLIED AND SPACED AS DETAILED ON THIS SHEET.

- NOTES:**
1. MAXIMUM SLOPE FOR ALL PATHS 5%, MAX CROSS FALL IS 2% FOR THE FIRST FIVE FEET FROM THE DOOR A 2% SLOPE (MAX) MUST BE MAINTAINED.
 2. SIGNAGE AND MARKINGS TO BE IN ACCORDANCE WITH FEDERAL, STATE, AND LOCAL REGULATIONS.
 3. HANDICAP RAMPS WILL BE STAINED (NO PAINT).



RECORD DRAWING

THIS DRAWING HAS BEEN REVISED TO REFLECT CONSTRUCTION RECORDS MAINTAINED AND PROVIDED BY THE CONTRACTOR FOR

CONTRACTOR: HILL & WILKINSON
DATE REVISED: 08/30/2012

NO.	DATE	REVISION
1	08/30/2012	RECORD DRAWING

Pacheco Koch 8350 N. CENTRAL EXPWY. SUITE 1000
DALLAS, TX 75208 972.235.3031
DALLAS • FORT WORTH • HOUSTON TX REG. SURVEYING FIRM LS-100080-00

PAVING DETAILS
HATFIELD & COMPANY, INC.
DISCOVERY BLVD. & INNOVATION ST.
ROCKWALL
CITY OF ROCKWALL, ROCKWALL COUNTY, TX

DESIGN	DRAWN	DATE	SCALE	NOTES	FILE	NO.
GAP	GAP	MARCH 2012	1"=40'			C6.2