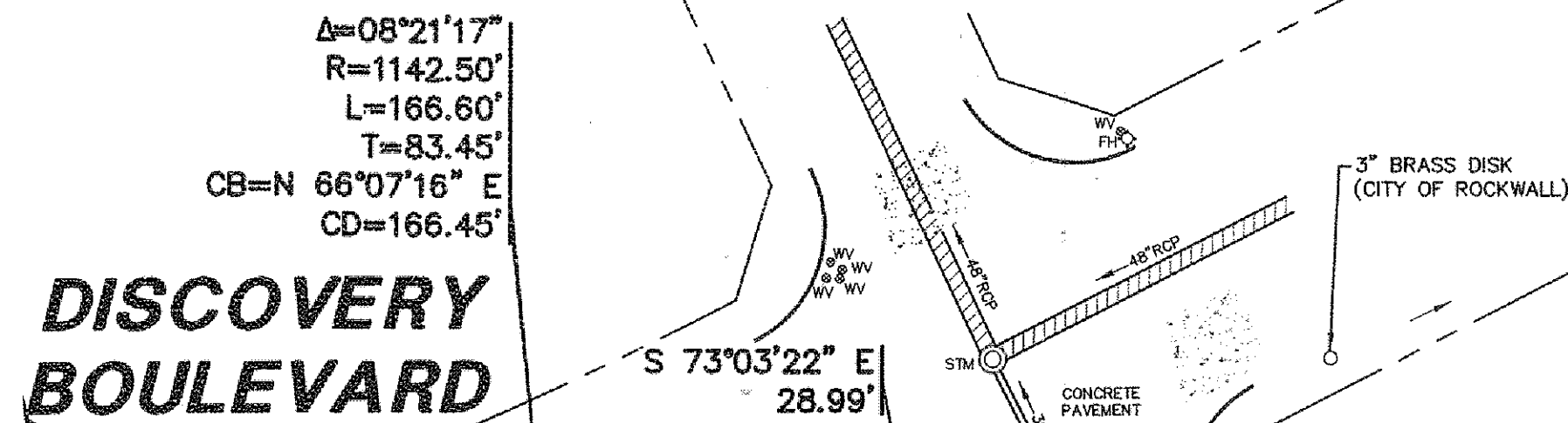


LOT 7, BLOCK C
ROCKWALL TECHNOLOGY PARK
(CAB. E, SLIDE 329)
ROCKWALL ECONOMIC
DEVELOPMENT
(VOL. 1410, PG. 247)



DISCOVERY BOULEVARD

LOT 2, BLOCK A
ROCKWALL TECHNOLOGY PARK
(CAB. F, SLIDE 275)
SPECIAL PRODUCTS REALTY, LTD.
(INST. NO. 2008-00395349)

INNOVATION DRIVE

LOT 1, BLOCK B
ROCKWALL TECHNOLOGY PARK
(CAB. D, SLIDE 220)
FALCON FINE WIRE & WIRE
PRODUCTS, INC.
(VOL. 1714, PG. 63)

LOT 2, BLOCK B
ROCKWALL TECHNOLOGY PARK
(CAB. D, SLIDE 220)
ROCKWALL ECONOMIC
DEVELOPMENT
(VOL. 1410, PG. 247)

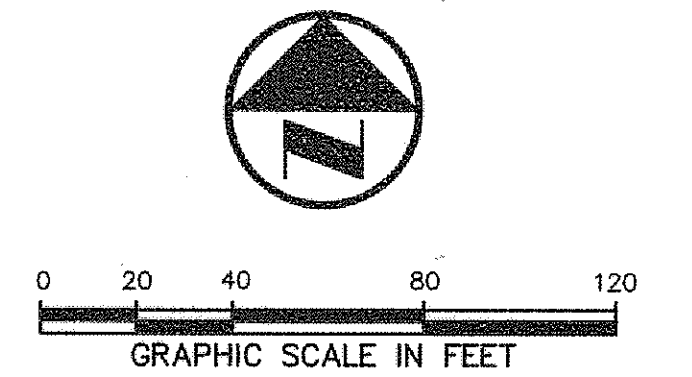
ONE-STORY
OFFICE/WAREHOUSE
FF 594.00

LOT 5, BLOCK A
ROCKWALL TECHNOLOGY PARK
(CAB. E, SLIDE 262)
LAHLOUH FAMILY LIMITED
PARTNERSHIP
(VOL. 2856, PG. 313)

LAHLOUH FAMILY LIMITED
PARTNERSHIP
(VOL. 2856, PG. 313)

PAVING GENERAL NOTES

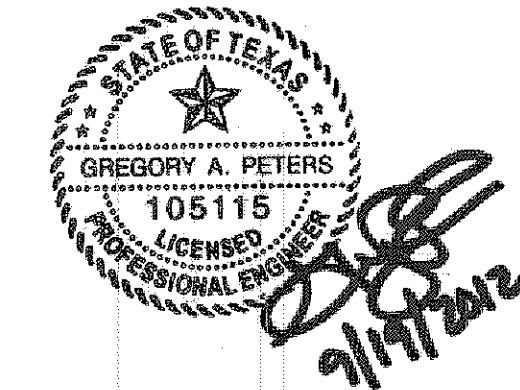
1. ALL DIMENSIONS ARE FROM BACK OF CURB UNLESS OTHERWISE NOTED.
2. ALL CONCRETE SHALL CONFORM TO NCTCOG ITEM 303.3.4, CLASS "A" (3000 PSI) UNLESS OTHERWISE SHOWN ON THESE PLANS OR STATED IN STANDARD CITY SPECIFICATIONS.
3. UNLESS NOTED, ALL FILL PLACED UNDER PAVING SHALL BE COMPACTED TO 95% STANDARD PROCTOR DENSITY IN 6 INCH LIFTS. REFER TO STRUCTURAL SPECIFICATION FOR FILL PLACED BENEATH BUILDING AREAS. ALL OTHER FILL AREAS TO BE COMPACTED TO 90% STANDARD PROCTOR.
4. THE CONTRACTOR SHALL SUBMIT A JOINT SPACING PLAN TO THE ENGINEER FOR APPROVAL UNLESS NOTED. EXPANSION JOINT SPACING SHALL BE 90' MAXIMUM EACH WAY WITH NO KEYWAYS AND SAWED DUMMY JOINTS SHALL BE 15' EACH WAY.
5. TRANSVERSE CONSTRUCTION JOINTS SHALL BE USED AT THE END OF EACH DAY'S PAVING AND WHERE INTERRUPTIONS SUSPEND OPERATIONS FOR 30 MINUTES OR MORE.
6. ALL PAVEMENTS TO BE REMOVED SHALL BE SAWCUT TO A NEAT LINE, MINIMUM 1-1/2" DEEP, AND THE PAVEMENT REMOVED IN SUCH A MANNER AS TO PRESERVE THE EXISTING TRANSVERSE REINFORCING STEEL TO THE MAXIMUM EXTENT POSSIBLE.
7. ALL CURB AND GUTTER SHALL BE INTEGRAL WITH THE PAVEMENT AND HAVE THE SAME COMPRESSIVE STRENGTH.
8. PAVEMENT REINFORCEMENT SHALL BE #3 BARS, SPACED AT 18" CENTER TO CENTER EACH WAY EXCEPT WHERE NOTED IN THE PLANS.
9. BAR LAPS SHALL BE 30 DIAMETERS IN LENGTH.
10. ALL STRIPES SHALL BE 4" WIDE, UNLESS OTHERWISE NOTED.
11. INSTALLATION AND PLACEMENT OF IRRIGATION SLEEVES AND UTILITY CONDUITS SHALL BE IN ACCORDANCE WITH LANDSCAPE ARCHITECTS AND MEP PLANS.
12. SIDEWALKS AND ACCESSIBLE ROUTES SHALL HAVE A RUNNING SLOPE NO GREATER THAN 5% (UNLESS NOTED OTHERWISE) AND A CROSS SLOPE NOT GREATER THAN 2%.
13. PER THE CITY OF ROCKWALL STANDARDS, NO SAND IS ALLOWED UNDER PAVING.
14. BARRIER FREE RAMPS IN THE R.O.W. SHALL HAVE TRUNCATED DOME PLATES AND CONFORM TO THE CITY OF ROCKWALL STANDARDS. PAVERS ARE NOT ALLOWED.



LEGEND

- B. BOLLARD
- EM. ELECTRIC METER
- PP. POWER POLE
- LS. LIGHT STANDARD
- WM. WATER METER
- WV. WATER VALVE
- ICV. IRRIGATION CONTROL VALVE
- FR. FIRE HYDRANT
- CO. CLEANOUT
- M. MANHOLE
- TSC. TRAFFIC SIGNAL CONTROL
- TSP. TRAFFIC SIGNAL POLE
- TBE. TELEPHONE BOX
- FL. FLOOD LIGHT
- FP. FLAG POLE
- TR. TRAFFIC SIGN
- IRS. 1/2-INCH IRON ROD W/ "PACHECO KOCH" CAP SET
- (C.M.) CONTROLLING MONUMENT
- PROPERTY LINE
- FENCE
- 4" REINFORCED CONCRETE (CLASS "A", 3000 PSI) MIN. 5.5 SACK
- 5" REINFORCED CONCRETE PAVEMENT (CLASS "A", 3600 PSI) (MIN. 6.0 SACK FOR MACHINE POUR) (MIN. 6.5 SACK FOR HAND POUR)
- 6" REINFORCED CONCRETE PAVEMENT (CLASS "C", 3600 PSI) (MIN. 6.0 SACK FOR MACHINE POUR) (MIN. 6.5 SACK FOR HAND POUR)
- 7" REINFORCED CONCRETE PAVEMENT (CLASS "C", 3600 PSI) (MIN. 6.0 SACK FOR MACHINE POUR) (MIN. 6.5 SACK FOR HAND POUR)
- 7" REINFORCED CONCRETE PAVEMENT (CLASS "A", 3600 PSI) (MIN. 6.0 SACK FOR MACHINE POUR) (MIN. 6.5 SACK FOR HAND POUR)

KIMBLEY 09/18/2012 12:35PM M:\DWG-20\2058-11-325-DWG\C30\2058-11-325-EP.DWG



RECORD DRAWING
THIS DRAWING HAS BEEN REVISED TO REFLECT CONSTRUCTION RECORDS MAINTAINED AND PROVIDED BY THE CONTRACTOR FOR
CONTRACTOR: HILL & WILKINSON
DATE REVISED: 08/30/2012

NO.	DATE	REVISION
1	08/30/2012	RECORD DRAWING

Pacheco Koch 8350 N. CENTRAL EXP'WAY, SUITE 1000 DALLAS, TX 75208 972-235-3031 TX REG. ENGINEERING FIRM F-468 DALLAS • FORT WORTH • HOUSTON TX REG. SURVEYING FIRM LS-100080-00

PAVING PLAN
HATFIELD & COMPANY, INC.
DISCOVERY BLVD. & INNOVATION ST.
ROCKWALL
CITY OF ROCKWALL, ROCKWALL COUNTY, TX

DESIGN	DRAWN	DATE	SCALE	NOTES	FILE	NO.
GAP	GAP	MARCH 2012	1"=40'			C6.1