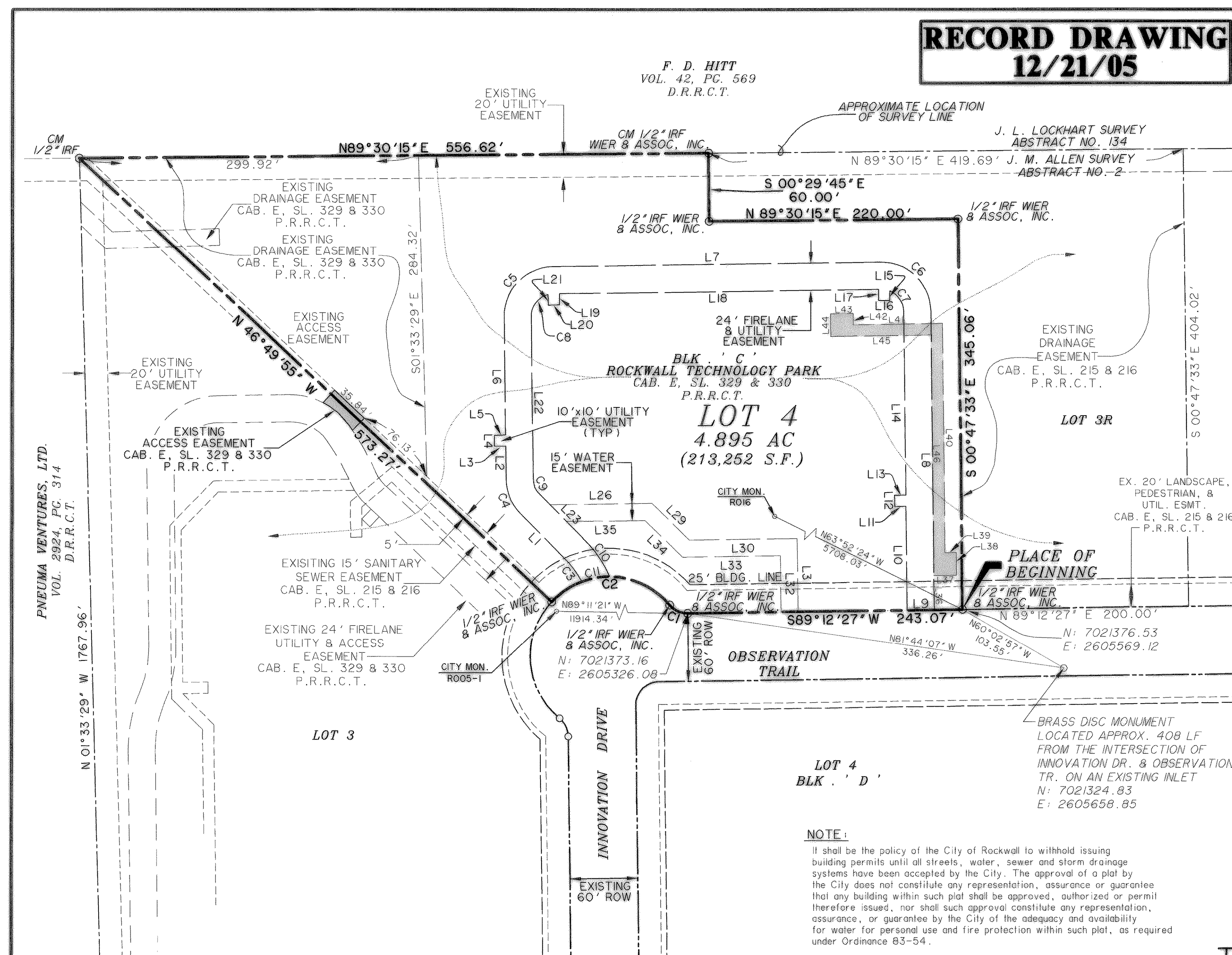
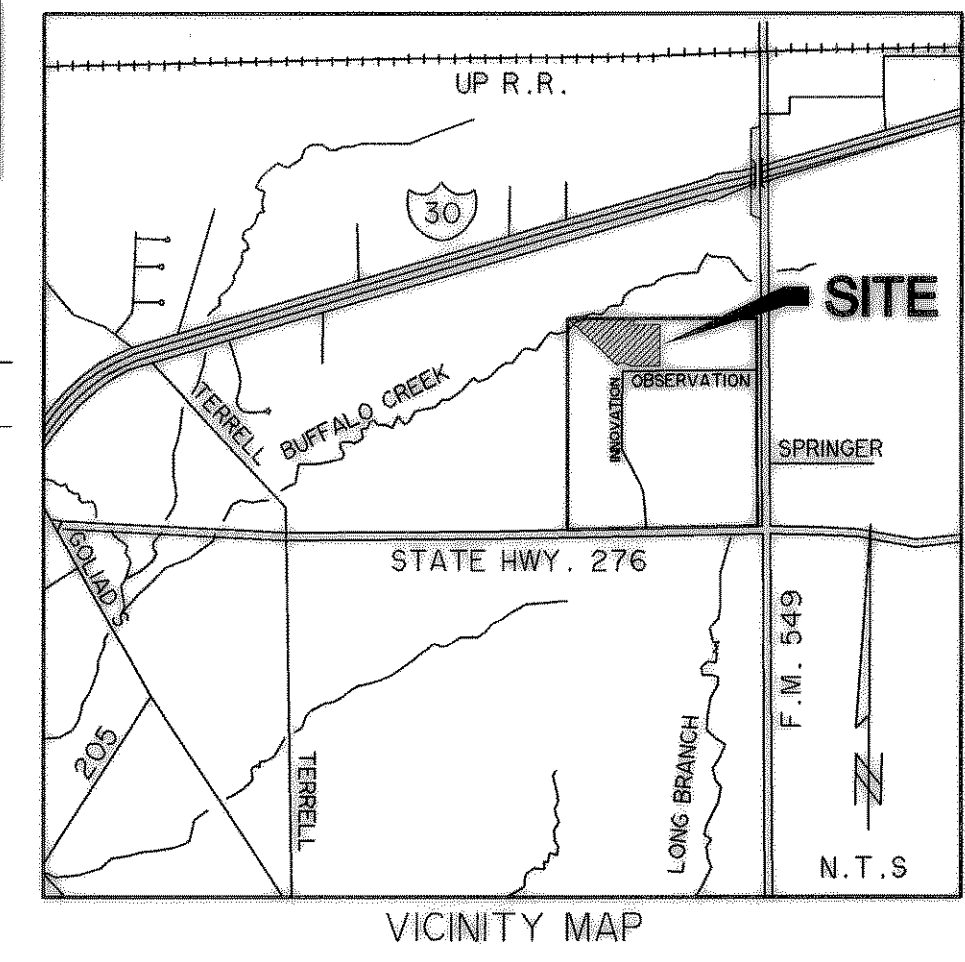


RECORD DRAWING
12/21/05

F. D. HITT
VOL. 42, PC. 569
D.R.R.C.T.



NOTE:
1. BEARINGS ARE CORRELATED TO THE NORTH LINE OF LOT 4, BLOCK 'C', ROCKWALL TECHNOLOGY PARK, RECORDED BY PLAT IN CABINET E, SLIDE 329 & 330, P.R.R.C.T. (N 89°30'15" E)

*** LEGEND ***

- LI LINE IDENTIFIED IN LINE TABLE
- CI CURVE IDENTIFIED IN CURVE TABLE
- CM CONTROLLING MONUMENT
- IRF IRON ROD FOUND
- TXU EASEMENT

NOTE:
It shall be the policy of the City of Rockwall to withhold issuing building permits until all streets, water, sewer and storm drainage systems have been accepted by the City. The approval of a plat by the City does not constitute any representation, assurance or guarantee that any building within such plat shall be approved, authorized or permit therefore issued, nor shall such approval constitute any representation, assurance, or guarantee by the City of the adequacy and availability for water for personal use and fire protection within such plat, as required under Ordinance 83-54.

AMENDED REPLAT
OF LOT 4, BLOCK C
ROCKWALL
TECHNOLOGY PARK
BEING 4.895 ACRES OF LAND SITUATED IN THE J.M. ALLEN SURVEY, ABSTRACT NO. 2, CITY OF ROCKWALL, ROCKWALL COUNTY, TEXAS.

CURVE TABLE				
CURVE	DELTA	RADIUS	LENGTH	CHORD LENGTH
C1	50°29'42"	20.50'	18.07'	17.49'
C2	96°34'15"	70.00'	117.98'	104.51'
C3	17°35'03"	83.40'	26.52'	26.41'
C4	44°04'44"	44.00'	33.85'	33.02'
C5	90°00'02"	44.00'	69.12'	62.23'
C6	90°00'00"	44.00'	69.12'	62.23'
C7	66°30'59"	20.00'	23.22'	21.94'
C8	76°04'54"	20.00'	26.56'	24.65'
C9	44°04'44"	20.00'	15.79'	15.01'
C10	21°42'50"	10.40'	41.84'	41.59'
C11	20°34'55"	10.00'	25.15'	25.01'

LINE TABLE									
LINE	LENGTH	BEARING	L20	11.89	S45°00'00"E	L36	30.00	N00°47'33"W	
L1	16.06	S00°00'00"E	L21	66.11	N41°11'01"E	L37	20.00	N89°12'27"E	
L2	10.00	N90°00'00"W	L23	56.04	S61°56'38"W	L38	20.00	N00°47'33"W	
L3	18.44	S00°00'00"E	L24	20.63	N85°37'32"W	L39	10.00	S00°47'33"E	
L4	133.80	N73°55'02"E	L25	29.17	S85°37'32"E	L40	202.33	N85°37'32"W	
L5	217.93	N90°00'00"E	L26	90.20	N89°12'21"E	L41	78.76	S89°12'27"W	
L7	18.67	S14°26'51"E	L27	8.54	S90°00'00"E	L42	10.00	N00°47'33"W	
L10	125.60	N73°55'02"E	L28	33.74	N90°00'00"E	L43	20.00	S89°12'27"W	
L13	121.77	N73°55'02"E	L29	46.12	S45°47'35"E	L44	20.00	S00°47'33"E	
L14	25.00	S00°00'00"E	L30	95.53	N89°12'21"E	L45	88.76	N89°12'27"E	
L15	10.00	N90°00'00"E	L31	64.23	S00°47'30"E	L46	212.33	S00°47'33"E	
L16	25.00	S00°00'00"E	L32	49.22	S00°47'30"E				
L17	28.50	S00°00'00"E	L33	86.75	N89°12'21"E				
L18	88.50	S00°00'00"E	L34	46.12	S45°47'35"E				
L19	12.65	S45°00'00"E	L35	69.46	N89°12'21"E				

PREPARED BY:
WIA WIER & ASSOCIATES, INC.
ENGINEERS SURVEYORS LAND PLANNERS
4300 BELTWAY PLACE SUITE 130 ARLINGTON, TEXAS 76018 METRO (817)467-7700
697 E. INTERSTATE 30 ROCKWALL, TEXAS 75087-0968 (972) 772-0025

OWNER:
ROCKWALL ECONOMIC DEVELOPMENT CORPORATION
697 E. INTERSTATE 30 ROCKWALL, TEXAS 75087-0968 (972) 772-0025

DATE: 12-21-2005
FILE: REPLAT-LOT4BLK.C.dwg
W.A. No. 98041
SHEET 1 OF 2

TIME: 10:02

Emphasis